



**CRITICAL THINKING
& PROBLEM SOLVING**

Students reason effectively in order to identify, define, and solve complex problems and essential questions.



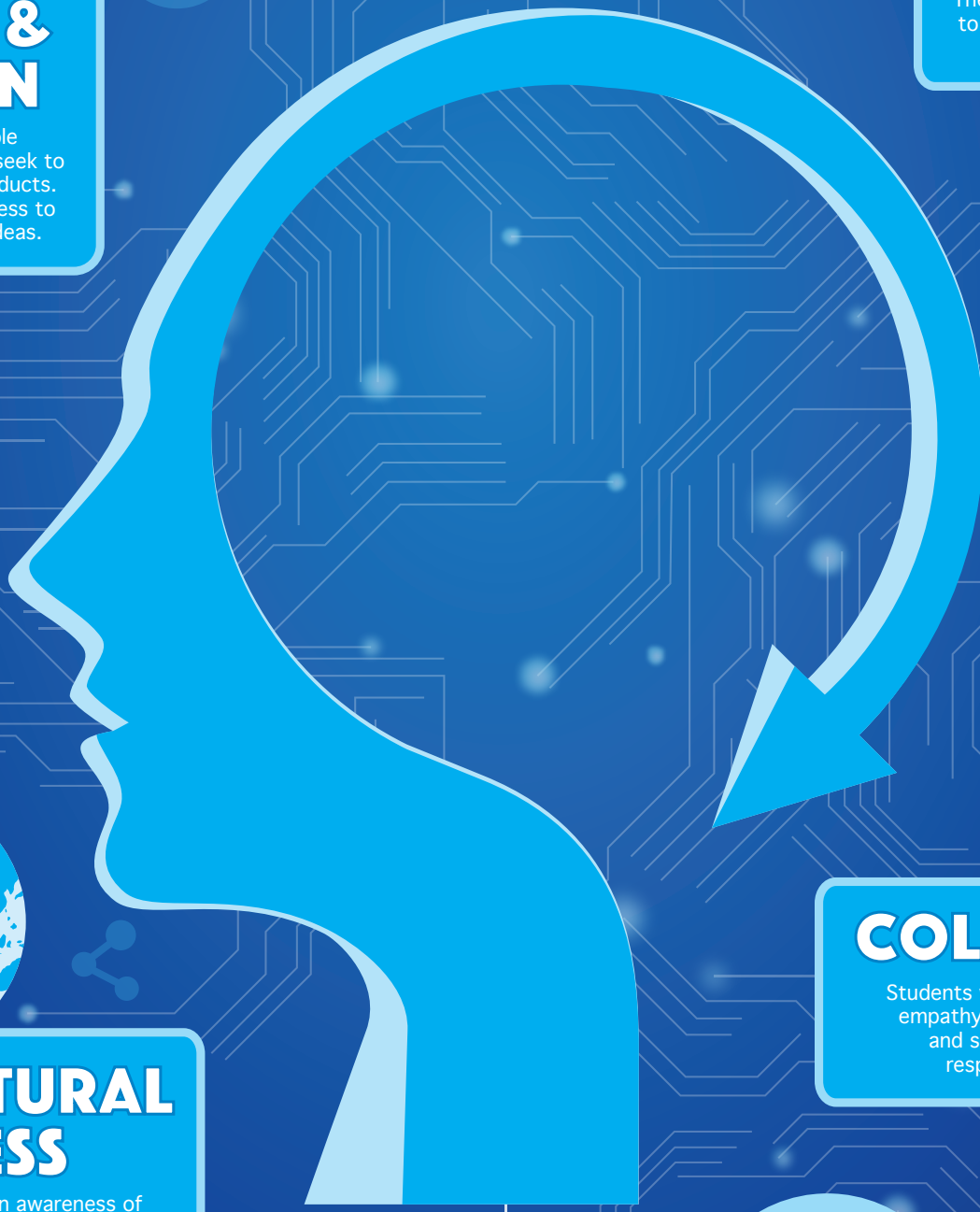
**ADAPTABILITY
& RESILIENCE**

Students adapt to varied roles, responsibilities, and contexts, working effectively in a climate of ambiguity and changing priorities. They persist to accomplish difficult tasks and to overcome academic and personal barriers to meet goals.



CREATIVITY & INNOVATION

Students take risks, explore multiple possibilities, challenge the status quo, seek to continually improve processes and products. They deliberate through a design process to solve problems and act on creative ideas.



**CIVIC & CULTURAL
AWARENESS**

Students will develop and establish an awareness of the responsibilities of contributing individuals in a diverse society. They recognize and respect the differences in values that may exist between themselves and people from other countries or from varying social and cultural backgrounds.



COLLABORATION

Students work effectively, respectfully, and with empathy in a team of differing opinions, skills, and strengths. Students assume shared responsibility for collaborative work.



COMMUNICATION

Students speak and write with clarity, listen actively, and read with comprehension. They know their audience, understand the purpose, choose precise language, and when appropriate, incorporate media to enhance ideas

GRADUATE PROFILE



DJUSD

DAVIS JOINT UNIFIED
SCHOOL DISTRICT