



# DJUSD

DAVIS JOINT UNIFIED  
SCHOOL DISTRICT

## Educational Facility Master Plan and Community Outreach Services

DRAFT Facilities Master Plan Board of Education Workshop

May 17, 2018







# board of education workshop agenda

FMP Process Overview

FMP Binder Content

School Site Master Plans

Scope of Work Categories & Total Program Cost

Potential Funding

Stakeholder Groups Priorities

Board Prioritization Activity

Next Steps



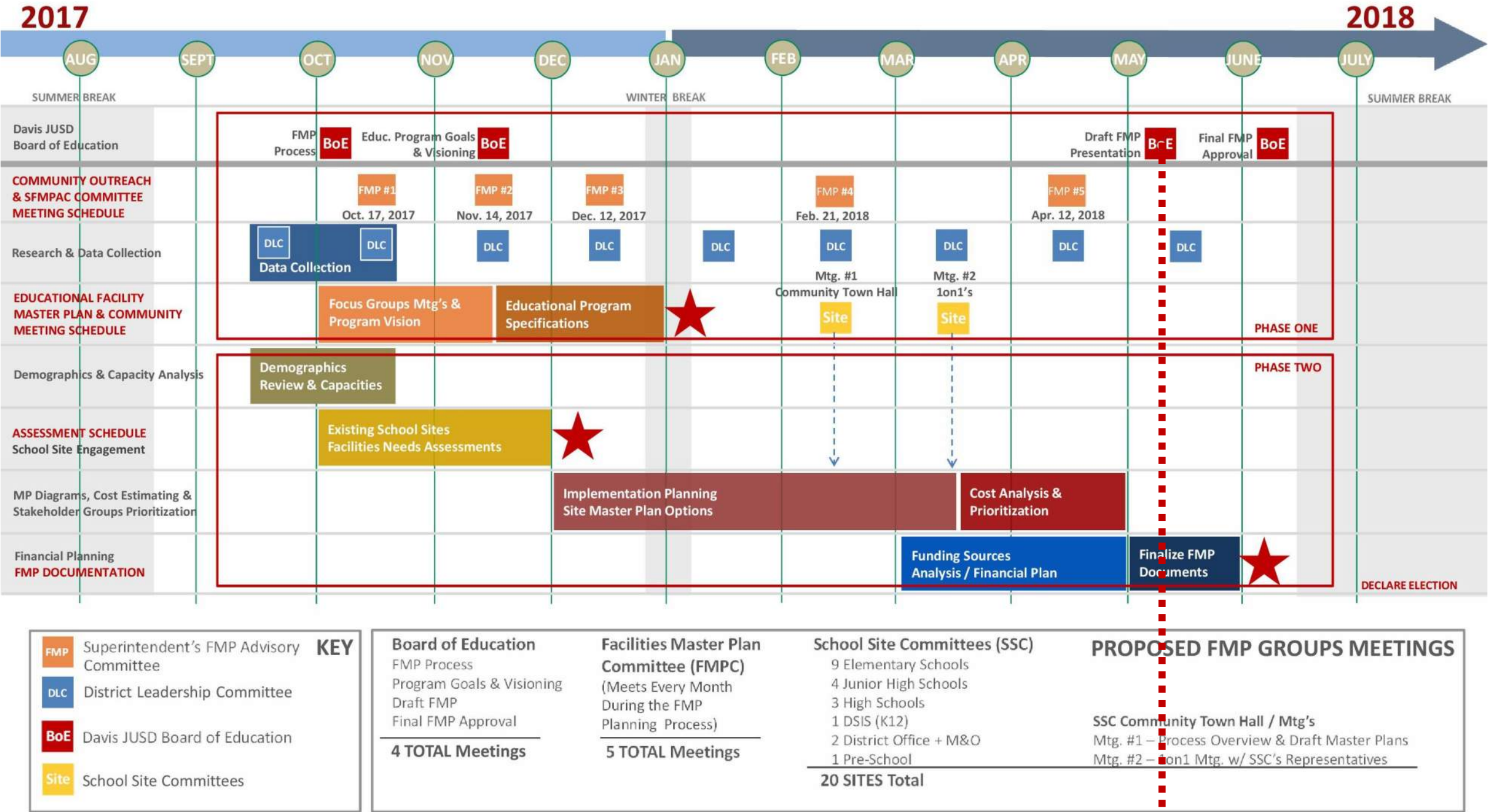


# create value | process overview



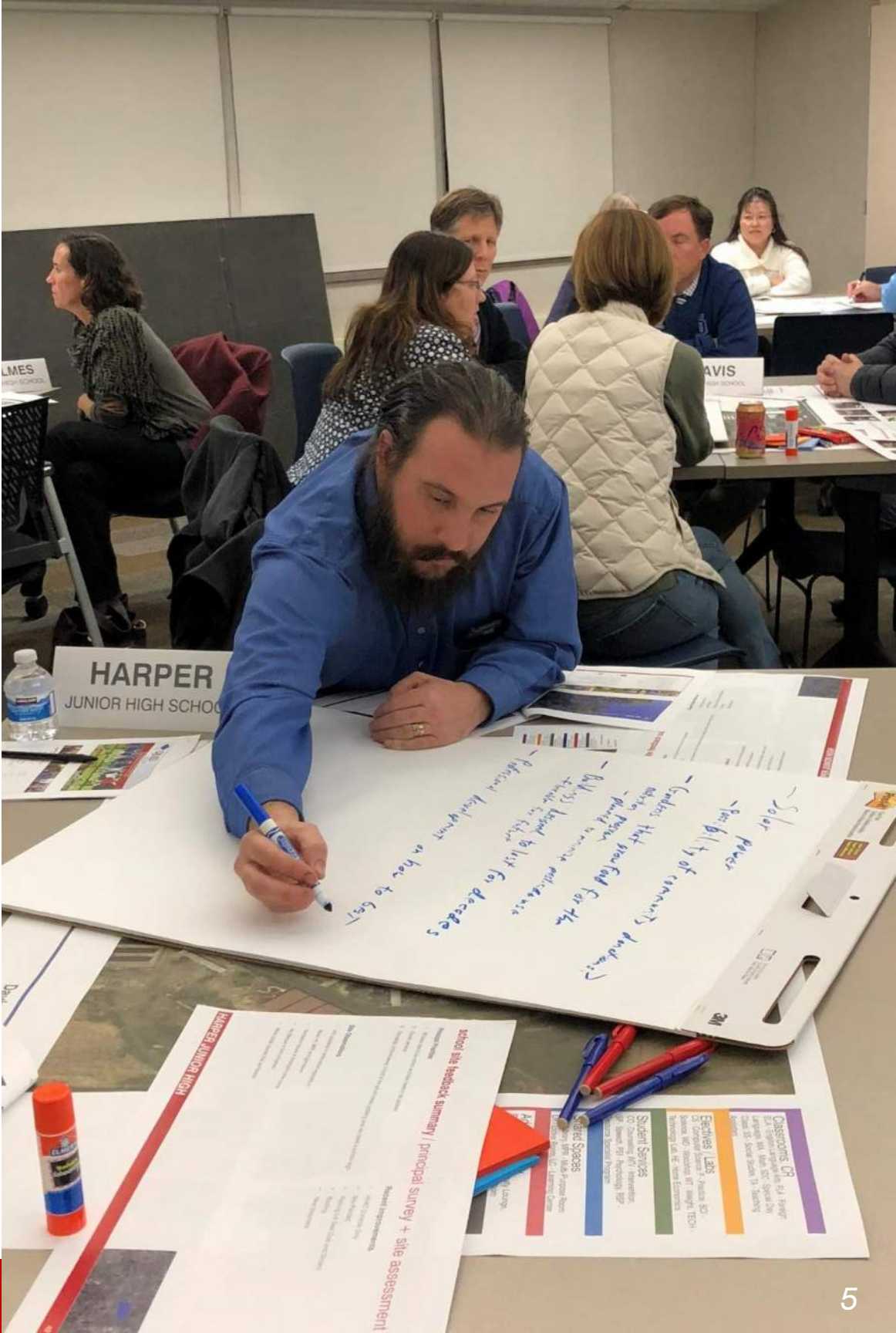
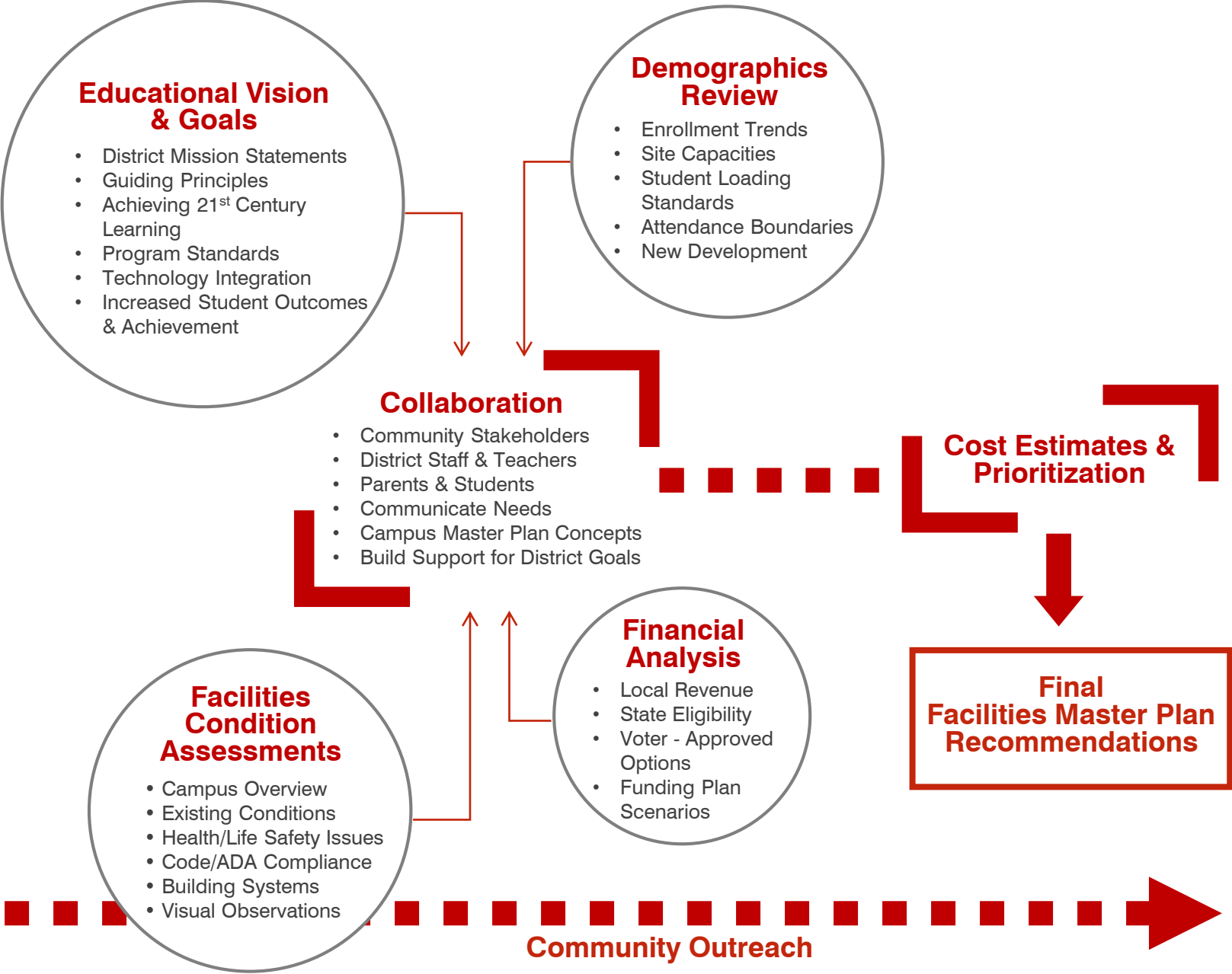


# approach / schedule





# approach / FMP process





# fmp process / stakeholder engagement

240  
participants

**7** District Leadership Meetings  
(Support FMP Process)

**5** Superintendent's Facilities Master Plan Advisory Committee Meetings

- 1 – Process Overview | Thought Starters | Defining Success
- 2 – Guiding Principles | Demographics | Needs Assessments
- 3 – Sustainable Goals | Teacher & Staff Survey | School Site Opportunities
- 4 – Student Survey | Program Standards | Town Hall Review
- 5 – Program Cost & Funding | Prioritization | Next Steps

**3** Town Hall  
School Site Master Plan Proposals





# fmp process / stakeholder engagement

240  
+ 43  
participants

**1** Educational Visioning Meeting  
Learning Spaces Design Charrette

**13** Focus Group Meetings

- 1 – Adult Education
- 2 – After School
- 3 – Child Development
- 4 – Children's Center
- 5 – Climate
- 6 – English Learners

- 7 – Elementary & Secondary Programs
- 8 – Instructional Technology
- 9 – Safety
- 10 – Inclusion
- 11 – Specialized Support Programs
- 12 – Student Nutrition
- 13 – Maintenance & Operations





# fmp process / stakeholder engagement

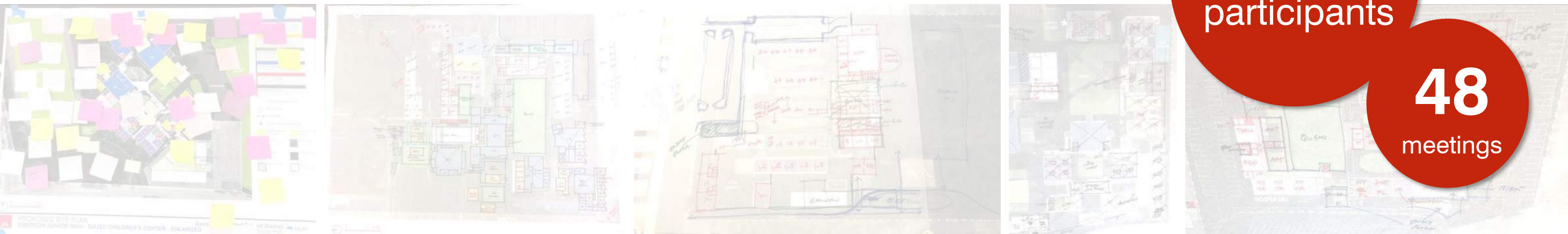
- 3** Online Surveys
- 1 – Principals
  - 2 – Teachers & Staff
  - 3 – Students

- 16** School Site Committee Meetings
- 1 – Principal Interviews / Site Visits
  - 2 – ‘1 on 1’ Meetings

240  
+ 43  
+ 700  
participants

983  
participants

48  
meetings





# fmp process / update

## 1-on-1 Meetings

Receive School Site Feedback on Draft Master Plans

March 6<sup>th</sup> & 7<sup>th</sup>

## Cost Estimate

March 19<sup>th</sup> & 20<sup>th</sup>

## Safety Task Force

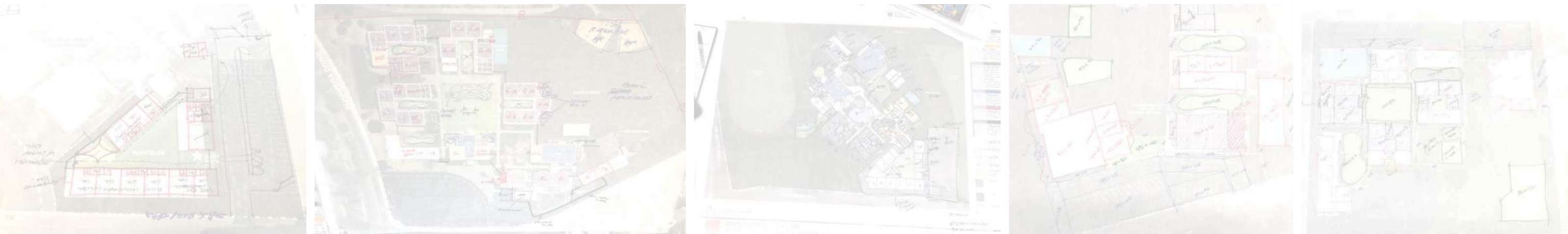
- School Safety and Facilities
- Safety Drills and Procedures
- School Site Supervision and Security
- Social Emotional Safety

April 4<sup>th</sup>

April 11<sup>th</sup>

April 18<sup>th</sup>

April 25<sup>th</sup>







**build smart**

| school site master plans







*SITE PLAN DIAGRAMS*





# build smart | scope of work categories

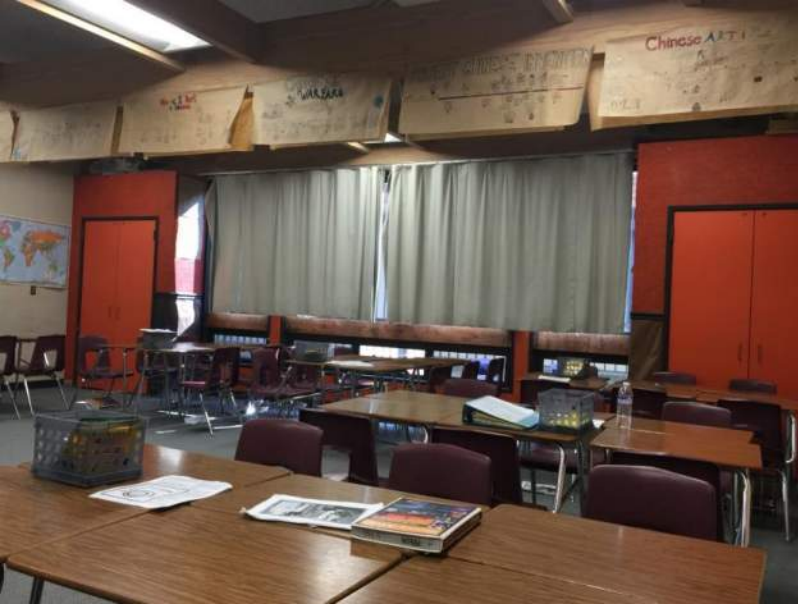




## scope of work categories / development of cost

- 01 Modernize / Reconfigure Existing Classrooms
- 02 Existing Building Systems, Toilets & Improved Energy Efficiency
- 03 Site Utilities & Infrastructure
- 04 New Construction (Classrooms)
- 05 Elementary STEM & JrHS/HS Science Programs
- 06 JrHS/HS Electives Improvements
- 07 Music, Drama & Performing Arts Improvements
- 08 MPR, Student Union & Food Service Improvements
- 09 Physical Education Improvements
- 10 Staff & Community Support
- 11 Library & Student Support Services
- 12 Safety & Security
- 13 Bike / Car Parking & Drop-Off
- 14 Outdoor Learning Courts, Quads & Gardens
- 15 Exterior Play Spaces, Playfields & Hardcourts
- 16 Next Generation Learning Furniture
- 17 Technology Infrastructure & Equipment





- Replacement / repair of roofs/walls/windows/doors/floors/ceilings
- Painting interior / exterior
- Structural upgrades
- Reconfigure walls

# 01 MODERNIZE / RECONFIGURE Existing Classrooms



# 02 EXISTING BUILDING SYSTEMS, Toilets & Improved Energy Efficiency

- HVAC upgrades
- Lighting upgrades
- Electrical upgrades
- Gender-neutral restroom addition
- Toilets modernization or reconfiguration
- Energy management systems



- Updated sewer service lines
- Updated water service lines
- Updated electrical mains and distribution

## SITE UTILITIES & Infrastructure 03



# 04 NEW CONSTRUCTION (Classrooms)





# 05 ELEMENTARY STEM & JrHS/HS Science Programs



# JrHS/HS ELECTIVES Improvements 06



# 07 MUSIC, DRAMA & Performing Arts Improvements



- Kitchen improvements
- Lunch shelter
- Modernization & new



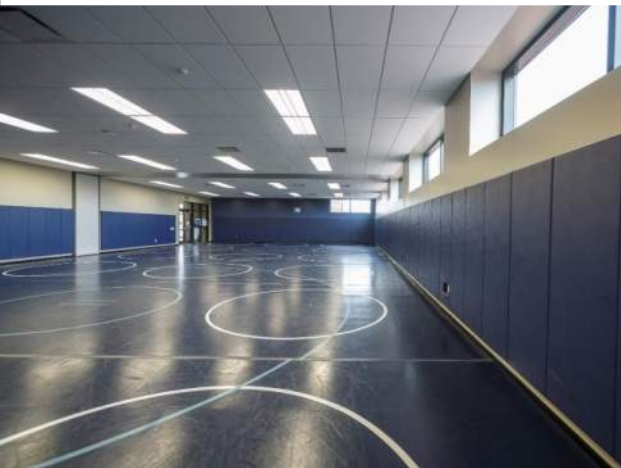
# MPR, STUDENT UNION & Food Service Improvements 08



# 09 PHYSICAL EDUCATION Improvements



- Modernization or new construction
- MS/HS Locker Rooms
- Weights, Fitness
- Gymnasiums



- Modernization, reconfiguration or new construction
- Staff collaboration / workrooms



# STAFF & Community Support 10



# 11 LIBRARY & Student Support Services



- Exterior & emergency lighting
- Safety locks in classroom doors
- Signage & wayfinding
- Covered walkways
- Campus security fencing
- Fire alarms & emergency lighting
- Public address / emergency communication systems
- Intrusion alarms



# SAFETY & Security 12



# 13 BIKE / CAR Parking & Drop-Off



# OUR DOOR LEARNING COURTS, Quads & Gardens 14

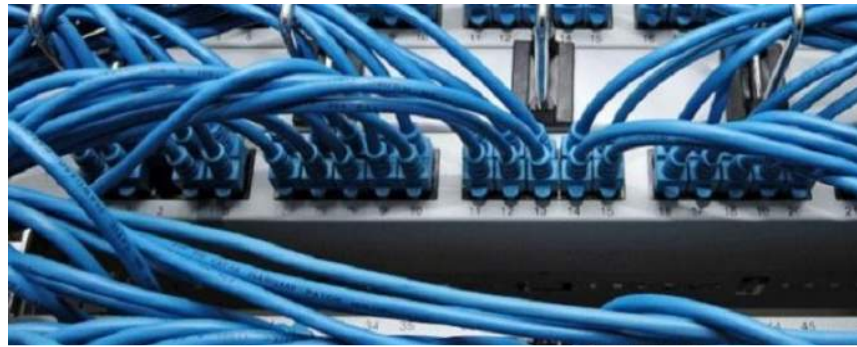


# 15 EXTERIOR PLAY SPACES, Playfields & Hardcourts





# 16 NEXT GENERATION Learning Furniture



# TECHNOLOGY Infrastructure & Equipment 17





**build smart** |

total program costs





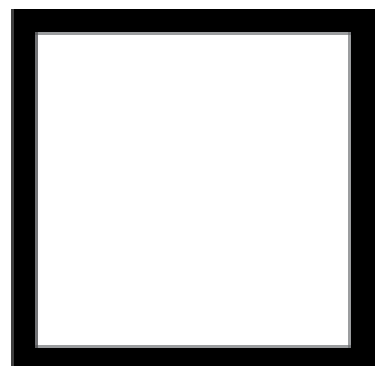
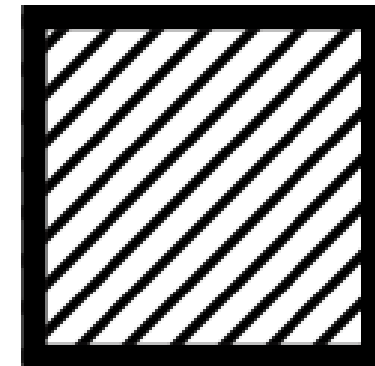
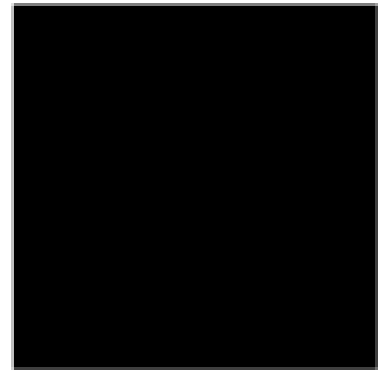
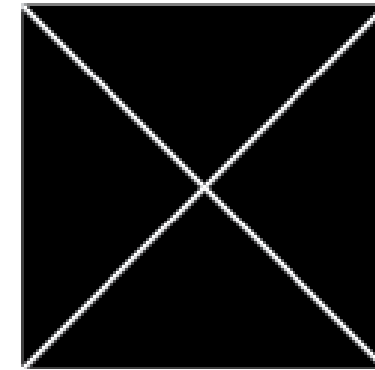
# budget development / costs

Based on program and campus needs identified by stakeholders during the facilities master planning process.

Total project cost includes construction costs and soft costs for the scope of work identified.

The following items are **excluded** from this budget:

- Utility hook-up fees & city connections
- Off-site work
- Land acquisition costs
- Hazardous material surveys, abatement and disposal
- Escalation (costs are in 2018 dollars)





# project cost summary / school sites

SCHOOL SITE	MASTER PLAN COST	SCHOOL SITE	MASTER PLAN COST
Birch Lane Elementary School	\$ 38,847,000	Emerson Junior High School	\$ 39,330,000
Cesar Chavez Elementary School	\$ 30,159,000	Harper Junior High School	\$ 8,926,000
Fairfield Elementary School	\$ 1,818,000	Holmes Junior High School	\$ 23,911,000
Korematsu Elementary School	\$ 12,068,000	Davis Senior High School	\$ 103,189,000
Montgomery Elementary School	\$ 11,512,000	Da Vinci Charter Academy	\$ 38,124,000
North Davis Elementary School	\$ 39,027,000	Martin Luther King (Jr) High School	\$ 551,000
Patwin Elementary School	\$ 23,638,000	DJUSD Children’s Center	\$ 9,338,000
Pioneer Elementary School	\$ 19,374,000	Davis Adult & Community Education	\$ 1,901,000
Willett Elementary School	\$ 37,930,000	Maintenance & Operations	\$ 177,000
		<b>Total Elementary Project Cost (2018\$)</b>	<b>\$ 443,810,000</b>

The following items are excluded from this budget:  
Utility hook-up fees & City connection fees . Off-site work and traffic signals . Land acquisition costs . Hazardous material surveys, abatement, and disposal . Escalation



# project cost summary / scope categories

SCOPE CATEGORY	SCHOOL SITE								
	Birch Lane Elementary School	Cesar Chavez Elementary School	Fairfield Elementary School	Korematsu Elementary School	Marguerite Montgomery Elementary School	North Davis Elementary School	Patwin Elementary School	Pioneer Elementary School	Willett Elementary School
Modernize / Reconfigure Aging Classrooms	2,018,000	2,063,000	398,000	-	-	2,010,000	3,098,000	2,329,000	1,998,000
Existing Building Systems & Toilets	650,000	474,000	304,000	27,000	1,091,000	773,000	3,267,000	933,000	1,578,000
Site Utilities & Infrastructure	389,000	788,000	-	-	-	1,362,000	-	1,327,000	1,228,000
New Construction (Classrooms)	13,822,000	6,039,000	114,000	4,288,000	2,742,000	13,568,000	6,529,000	6,466,000	10,372,000
Elementary STEM & JrHS/HS Science Programs	2,074,000	846,000	-	2,904,000	2,593,000	-	489,000	1,038,000	1,456,000
JrHS/HS Electives Improvements	-	-	-	-	-	-	-	-	-
Music, Drama & Performing Arts Improvements	1,027,000	1,010,000	-	-	-	1,010,000	407,000	-	1,010,000
MPR, Student Union & Food Service Improvements	9,031,000	9,031,000	305,000	-	-	9,122,000	1,744,000	-	9,031,000
Physical Education Improvements	-	-	7,000	-	-	-	-	735,000	-
Staff & Community Support	1,301,000	1,307,000	-	163,000	401,000	3,290,000	501,000	600,000	3,115,000
Library & Student Support Services	2,178,000	2,593,000	48,000	591,000	719,000	3,089,000	2,958,000	1,072,000	2,731,000
Safety & Security	1,346,000	1,293,000	285,000	739,000	672,000	1,311,000	1,537,000	1,461,000	1,634,000
Bike / Car Parking & Drop-Off	1,393,000	1,345,000	-	92,000	58,000	1,154,000	536,000	270,000	787,000
Outdoor Learning Courts, Quads & Gardens	596,000	840,000	-	995,000	1,090,000	320,000	640,000	970,000	711,000
Exterior Play Spaces, Playfields & Hardcourts	1,425,000	1,248,000	203,000	1,022,000	779,000	600,000	648,000	578,000	622,000
Next Generation Learning Furniture	848,000	583,000	67,000	636,000	742,000	716,000	663,000	742,000	742,000
Technology Infrastructure & Equipment	749,000	699,000	87,000	611,000	625,000	702,000	621,000	853,000	915,000
<b>Total Project Cost (2018\$)</b>	<b>\$ 38,847,000</b>	<b>\$ 30,159,000</b>	<b>\$ 1,818,000</b>	<b>\$ 12,068,000</b>	<b>\$ 11,512,000</b>	<b>\$ 39,027,000</b>	<b>\$ 23,638,000</b>	<b>\$ 19,374,000</b>	<b>\$ 37,930,000</b>



# project cost summary / scope categories

SCOPE CATEGORY	SCHOOL SITE					
	Ralph Waldo Emerson Junior High School	Frances Harper Junior High School	Oliver Wendell Holmes Junior High School	Davis Senior High School	Da Vinci Charter Academy (JrHS & HS)	Martin Luther King (Jr) High School
1. Modernize / Reconfigure Aging Classrooms	2,190,000	-	-	-	1,704,000	-
2. Existing Building Systems & Toilets	6,878,000	27,000	133,000	769,000	1,518,000	27,000
3. Site Utilities & Infrastructure	2,496,000	-	1,869,000	1,921,000	744,000	-
4. New Construction (Classrooms)	86,000	4,440,000	4,524,000	25,102,000	8,592,000	-
5. Elementary STEM & JrHS/HS Science Programs	3,121,000	-	-	17,269,000	5,227,000	-
6. JrHS/HS Electives Improvements	1,477,000	-	1,497,000	12,262,000	2,625,000	46,000
7. Music, Drama & Performing Arts Improvements	591,000	-	3,322,000	543,000	1,010,000	-
8. MPR, Student Union & Food Service Improvements	2,130,000	-	4,191,000	973,000	639,000	75,000
9. Physical Education Improvements	6,583,000	-	-	10,611,000	8,217,000	31,000
10. Staff & Community Support	4,417,000	-	644,000	8,998,000	1,130,000	-
11. Library & Student Support Services	3,383,000	-	1,570,000	8,536,000	1,614,000	-
12. Safety & Security	2,106,000	775,000	1,187,000	4,229,000	1,589,000	42,000
13. Bike / Car Parking & Drop-Off	248,000	91,000	1,063,000	396,000	687,000	-
14. Outdoor Learning Courts, Quads & Gardens	241,000	691,000	969,000	1,263,000	693,000	-
15. Exterior Play Spaces, Playfields & Hardcourts	1,099,000	882,000	1,051,000	5,985,000	822,000	-
16. Next Generation Learning Furniture	663,000	901,000	928,000	2,120,000	663,000	133,000
17. Technology Infrastructure & Equipment	1,621,000	1,119,000	963,000	2,212,000	650,000	197,000
<b>Total Project Cost (2018\$)</b>	<b>\$ 39,330,000</b>	<b>\$ 8,926,000</b>	<b>\$ 23,911,000</b>	<b>\$ 103,189,000</b>	<b>\$ 38,124,000</b>	<b>\$ 551,000</b>



# project cost summary / scope categories

SCOPE CATEGORY	SCHOOL SITE				TOTAL
	Davis School for Independent Study (DSIS) and District Office	DJUSD Children's Center	Davis Adult and Community Education	Maintenance & Operations	
1. Modernize / Reconfigure Aging Classrooms	-	-	-	-	17,808,000
2. Existing Building Systems & Toilets	-	27,000	-	-	18,476,000
3. Site Utilities & Infrastructure	-	539,000	-	-	12,663,000
4. New Construction (Classrooms)	-	5,339,000	-	-	112,023,000
5. Elementary STEM & JrHS/HS Science Programs	-	-	-	-	37,017,000
6. JrHS/HS Electives Improvements	-	-	-	-	17,907,000
7. Music, Drama & Performing Arts Improvements	-	-	-	-	9,930,000
8. MPR, Student Union & Food Service Improvements	-	-	1,051,000	-	47,323,000
9. Physical Education Improvements	-	-	-	-	26,184,000
10. Staff & Community Support	3,990,000	1,320,000	850,000	177,000	32,204,000
11. Library & Student Support Services	-	970,000	-	-	32,052,000
12. Safety & Security	-	261,000	-	-	20,467,000
13. Bike / Car Parking & Drop-Off	-	554,000	-	-	8,674,000
14. Outdoor Learning Courts, Quads & Gardens	-	-	-	-	10,019,000
15. Exterior Play Spaces, Playfields & Hardcourts	-	328,000	-	-	17,292,000
16. Next Generation Learning Furniture	-	-	-	-	11,147,000
17. Technology Infrastructure & Equipment	-	-	-	-	12,624,000
<b>Total Project Cost (2018\$)</b>	<b>\$ 3,990,000</b>	<b>\$ 9,338,000</b>	<b>\$ 1,901,000</b>	<b>\$ 177,000</b>	<b>\$ 443,810,000</b>



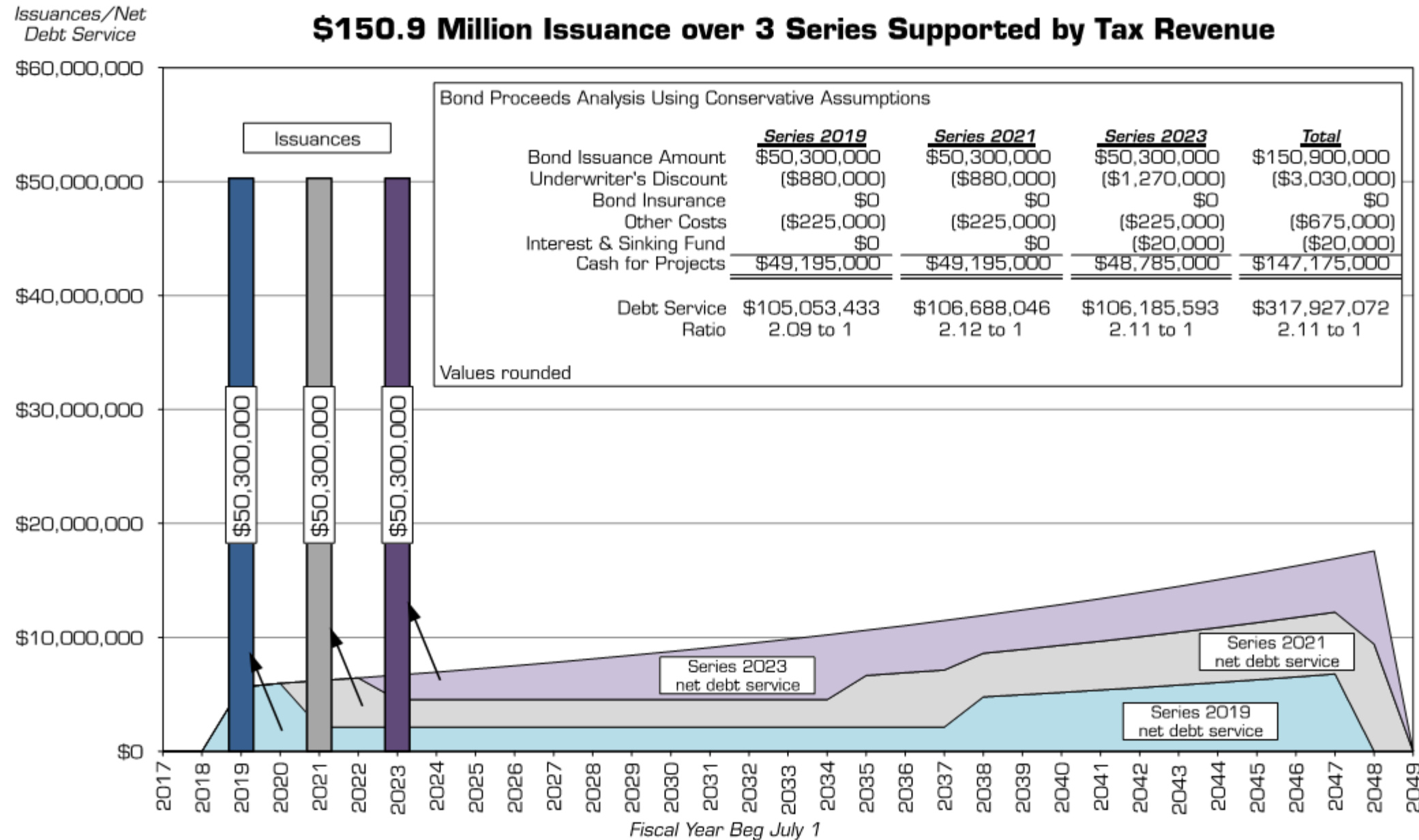


# create value | potential funding





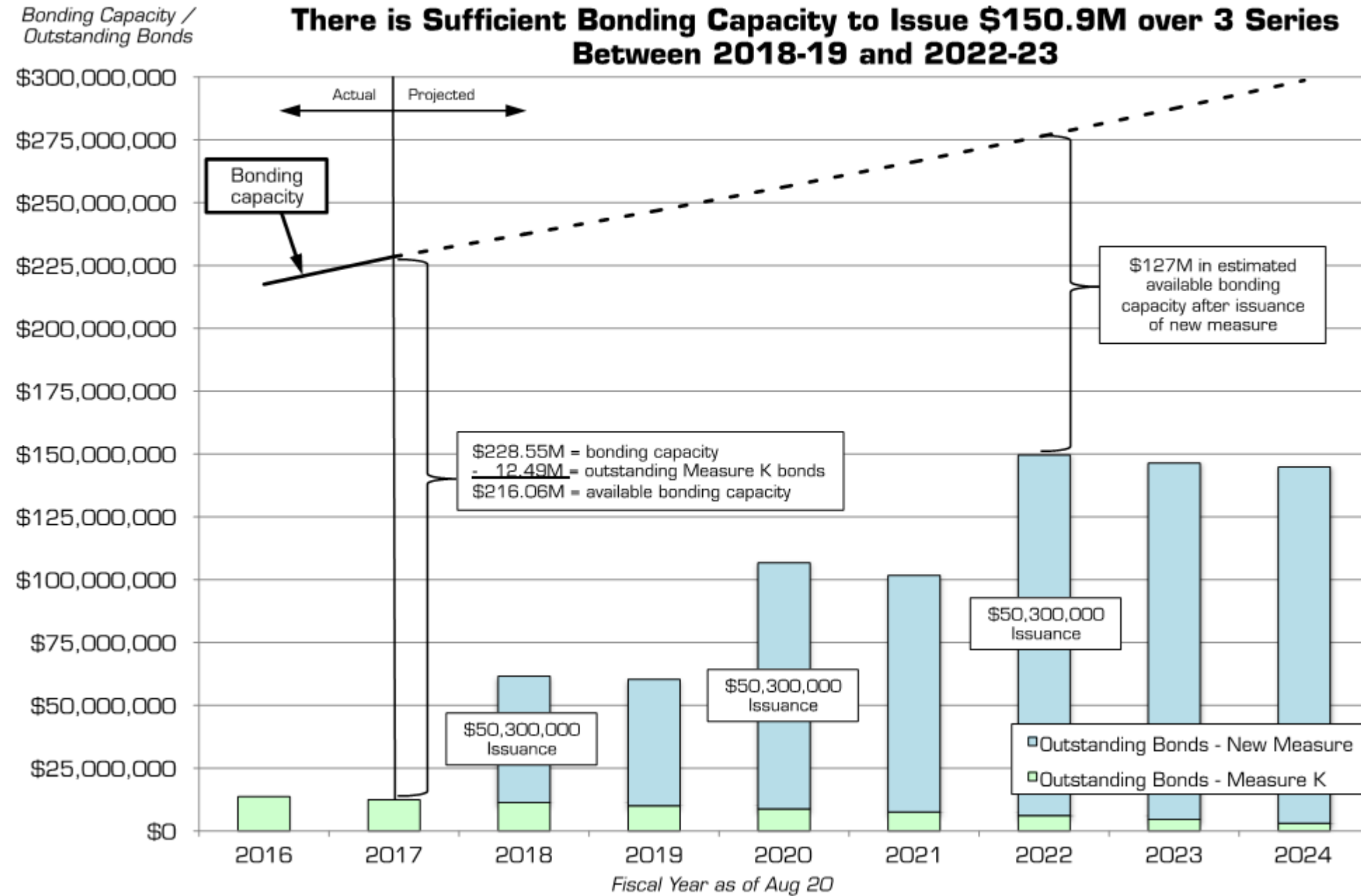
# potential funding analysis



Debt service based on MMD "AAA" rates as of Apr 2, 2018, adjusted +70bp for assumed "AA-" rating, plus timing adjustments for potential rate increasing prior to bond issuance of +125bp (2019), +150bp (2021), +175bp (2023), and +180bp for callable capital appreciation bonds. Existing net local secured AV is assumed to grow 4% annually, while all other AV types are assumed to remain unchanged. Values rounded.



# potential funding analysis



Bonding capacity is 2.5% of total District AV. AV through 2017-18 is actual, as obtained from Yolo & Solano Co Auditor-Controller's Departments. Net local secured AV is assumed to grow 4% annually, while all other types of AV are assumed to remain unchanged. Assessed value becomes "equalized" as of August 20 each year.



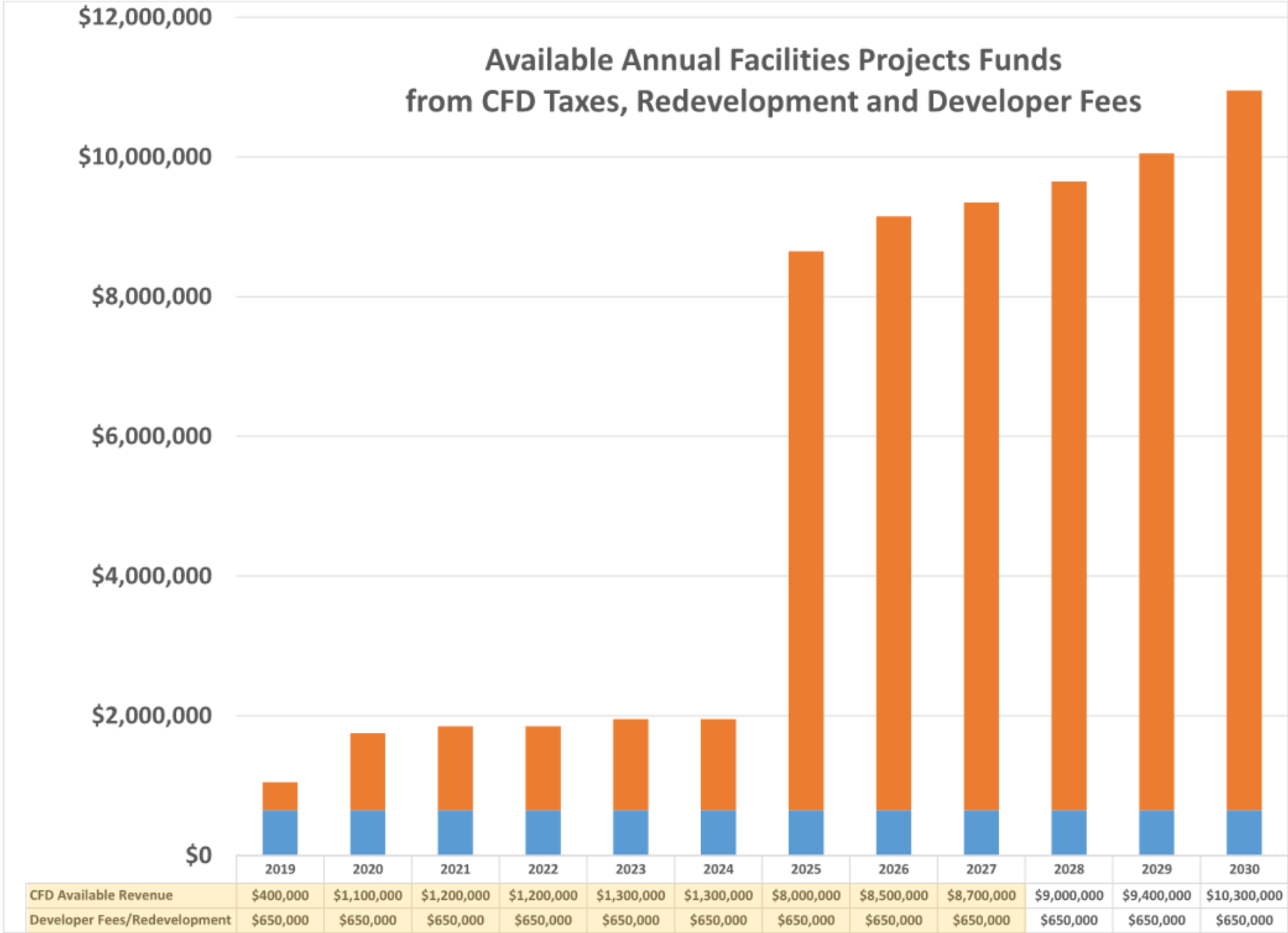
# potential funding analysis

## Comparison of Bond Measure Options

		55% Voter Approval		2/3 Measure	
		Nov 2018 Election	Nov 2020 Election	Nov 2018 Election	Nov 2020 Election
Issuance					
	May 1, 2019	\$50,300,000	\$0	\$96,700,000	\$0
	May 1, 2021	\$50,300,000	\$52,500,000	\$96,600,000	\$105,900,000
	May 1, 2023	\$50,300,000	\$52,500,000	\$96,600,000	\$105,900,000
	May 1, 2025	\$0	\$52,500,000	\$0	\$105,900,000
		<u>\$150,900,000</u>	<u>\$157,500,000</u>	<u>\$289,900,000</u>	<u>\$317,700,000</u>
Net Proceeds					
	May 1, 2019	\$49,195,000	\$0	\$94,785,000	\$0
	May 1, 2021	\$49,195,000	\$51,355,000	\$94,685,000	\$103,825,000
	May 1, 2023	\$48,785,000	\$51,355,000	\$94,685,000	\$103,825,000
	May 1, 2025	\$0	\$50,885,000	\$0	\$103,825,000
		<u>\$147,175,000</u>	<u>\$153,595,000</u>	<u>\$284,155,000</u>	<u>\$311,475,000</u>
Debt Service					
	May 1, 2019	\$105,053,433	\$0	\$203,829,813	\$0
	May 1, 2021	\$106,688,046	\$112,497,071	\$202,692,134	\$228,276,921
	May 1, 2023	\$106,185,593	\$113,593,000	\$154,364,149	\$227,870,083
	May 1, 2025	\$0	\$117,405,886	\$0	\$176,445,944
		<u>\$317,927,072</u>	<u>\$343,495,957</u>	<u>\$560,886,095</u>	<u>\$632,592,948</u>
Debt Service to Principal		2.11 to 1	2.18 to 1	1.93 to 1	1.99 to 1
Bonding Capacity - as of Election					
	Bonding Capacity	\$237,432,397	\$256,270,745	\$237,432,397	\$256,270,745
	Outstanding Measure K Bonds	(\$11,325,000)	(\$8,835,000)	(\$11,325,000)	(\$8,835,000)
	Remaining Bonding Capacity	<u>\$226,107,397</u>	<u>\$247,435,745</u>	<u>\$226,107,397</u>	<u>\$247,435,745</u>
Minimum Bonding Capacity Thereafter		\$126,976,303	\$145,819,505	\$16,303	\$79,505
Tax Levies					
	Maximum	\$60.00	\$60.00	\$132.07	\$140.38
	Average	\$59.98	\$59.98	\$110.95	\$115.84
	Minimum	\$59.96	\$59.96	\$83.98	\$88.18



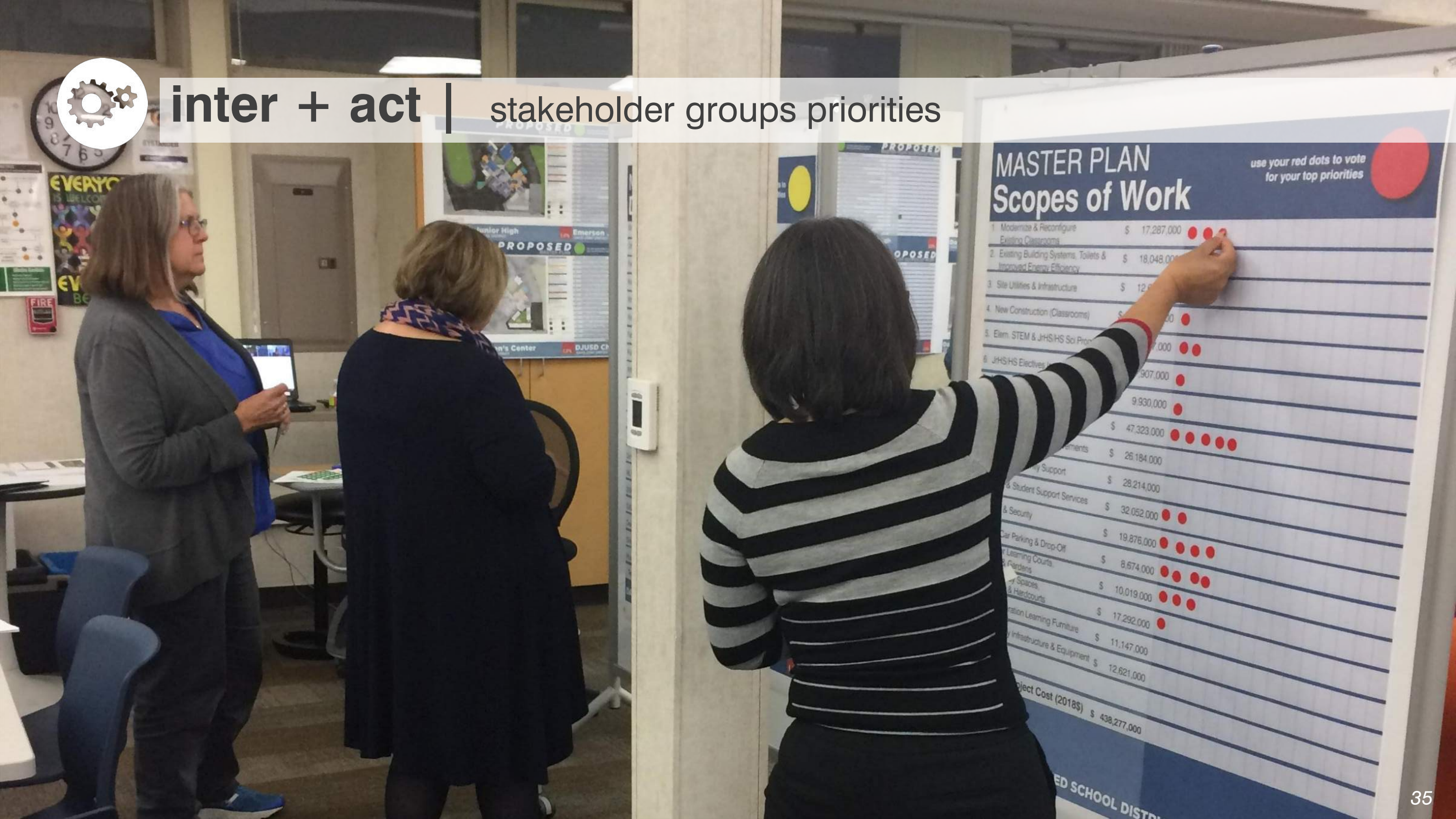
# potential funding analysis







# inter + act | stakeholder groups priorities



## MASTER PLAN Scopes of Work

use your red dots to vote  
for your top priorities

1. Modernize & Reconfigure Existing Classrooms	\$ 17,287,000	• • •
2. Existing Building Systems, Toilets & Improved Energy Efficiency	\$ 18,048,000	•
3. Site Utilities & Infrastructure	\$ 12,621,000	•
4. New Construction (Classrooms)	\$ 9,930,000	•
5. Elem. STEM & JHS/HS Sci Prom	\$ 9,907,000	• •
6. JHS/HS Electives	\$ 9,907,000	•
7. Student Support Services	\$ 47,323,000	• • • • •
8. Student Support	\$ 26,184,000	•
9. Student Support Services	\$ 28,214,000	•
10. Safety & Security	\$ 32,052,000	• •
11. Car Parking & Drop-Off	\$ 19,876,000	• • • •
12. Learning Courts, Gardens	\$ 8,674,000	• • • •
13. Open Spaces & Hardcourts	\$ 10,019,000	• • •
14. Modern Learning Furniture	\$ 17,292,000	•
15. Infrastructure & Equipment	\$ 11,147,000	•
16. Total Project Cost (2018\$)	\$ 438,277,000	

ED SCHOOL DISTRICT



# stakeholder groups priorities / teacher, staff & student surveys

TEACHERS & STAFF

**top responses: existing spaces needing improvement**

- parking & drop-off / pick-up areas
- classrooms
- multi-purpose room

**associated scope of work**

Bike / Car Parking & Drop-Off 13.  
Modernize / Reconfigure Existing Classrooms 01.  
MPR, Student Union & Food Service Improvements 08.

**top responses: desired new spaces or enhancements**

- modernization of existing facilities
- parking / drop-off
- multi-purpose room

Modernize / Reconfigure Existing Classrooms 01.  
Bike / Car Parking & Drop-Off 13.  
MPR, Student Union & Food Service Improvements 08.



STUDENTS

**top responses: existing spaces needing improvement**

- library
- food service & multi-purpose room
- campus grounds

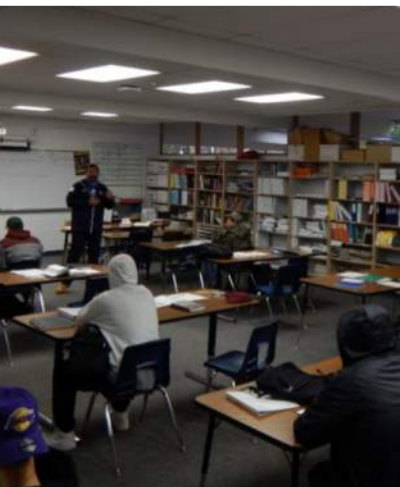
**associated scope of work**

Library & Student Support Services 11.  
MPR, Student Union & Food Service Improvements 08.  
Outdoor Learning Courts, Quads & Gardens 14.

**top responses: desired new spaces or enhancements**

- adequate parking / drop-off
- food service facility improvements
- art, science, music, computer lab, stem spaces

Bike / Car Parking & Drop-Off 13.  
MPR, Student Union & Food Service Improvements 08.  
Elementary STEM & JrHS/HS Science Programs 05.





# stakeholder groups priorities / principal interview

## Principal Priorities (taken during initial site assessment)

top 3 scope-of-work priorities by school site

	Birch Lane Elementary School	Cesar Chavez Elementary School	Fairfield Elementary School	Korematsu Elementary School	Marguerite Montgomery Elementary School	North Davis Elementary School	Patwin Elementary School	Pioneer Elementary School	Willett Elementary School	Da Vinci Charter Academy (Junior High)	Ralph Waldo Emerson Junior High School	Frances Harper Junior High School	Oliver Wendell Holmes Junior High School	Davis Senior High School	Da Vinci Charter Academy (High School)	Martin Luther King (Jr) High School	Davis School for Independent Study	DJUSD Children's Center	Davis Adult and Community Education	TOTAL
1. Modernize / Reconfigure Existing Classrooms				●										●	●	2	●	●	2	9
2. Existing Building Systems, Toilets & Improved Energy Efficiency														●						1
3. Site Utilities & Infrastructure																				0
4. New Construction (Classrooms)	●				●	●	●			●					●					6
5. Elementary STEM & JrHS/HS Science Programs									●											1
6. JrHS/HS Electives Improvements										●	2				●					4
7. Music, Drama & Performing Arts Improvements																				0
8. MPR, Student Union & Food Service Improvements		●	●						●				●							4
9. Physical Education Improvements																				0
10. Staff & Community Support	●					●			●	●										4
11. Library & Student Support Services	●	●			●												●			4
12. Safety & Security												●		●			●			3
13. Bike / Car Parking & Drop-Off		●				●	●	●				●	●							6
14. Outdoor Learning Courts, Quads & Gardens				●			●	●								●				4
15. Exterior Play Spaces, Playfields & Hardcourts			●	●			●					●	●							5
16. Next Generation Learning Furniture											●									1
17. Technology Infrastructure & Equipment					●													●		2



# stakeholder groups priorities / school site committee

## School Site Scopes-of-Work (taken at 1-on-1 meetings)

Priorities translated to the scope-of-work categories.  
top 3 scope-of-work priorities by school site

	Birch Lane Elementary School	Cesar Chavez Elementary School	Fairfield Elementary School	Korematsu Elementary School	Marguerite Montgomery Elementary School	North Davis Elementary School	Patwin Elementary School	Pioneer Elementary School	Willett Elementary School	Ralph Waldo Emerson Junior High School	Frances Harper Junior High School	Oliver Wendell Holmes Junior High School	Davis Senior High School	Da Vinci Charter Academy	Martin Luther King (Jr) High School	DJUSD Children's Center	Davis Adult and Community Education	TOTAL
1. Modernize / Reconfigure Existing Classrooms																		0
2. Existing Building Systems, Toilets & Improved Energy Efficiency					●		●								●	●		3
3. Site Utilities & Infrastructure																		0
4. New Construction (Classrooms)	●					●	●	●	●			●	●	●				8
5. Elementary STEM & JrHS/HS Science Programs				●	●													2
6. JrHS/HS Electives Improvements										2	●							3
7. Music, Drama & Performing Arts Improvements																		0
8. MPR, Student Union & Food Service Improvements	●	●				●			●			●			●			6
9. Physical Education Improvements																		0
10. Staff & Community Support		●							●				●	●		●	●	6
11. Library & Student Support Services		●			●												●	3
12. Safety & Security	●																●	2
13. Bike / Car Parking & Drop-Off						●	●								●	●		4
14. Outdoor Learning Courts, Quads & Gardens			●					●		●								3
15. Exterior Play Spaces, Playfields & Hardcourts			2	2				●			2	●	●					10
16. Next Generation Learning Furniture																		0
17. Technology Infrastructure & Equipment													●					1



# stakeholder groups priorities / summary

indicates common priorities

## TEACHER & STAFF SURVEYS

top responses: existing spaces needing improvement

- 13. Bike / Car Parking & Drop-Off
- 01. Modernize / Reconfigure Existing Classrooms
- 08. MPR, Student Union & Food Service Improvements

top responses: desired new spaces or enhancements

- 01. Modernize / Reconfigure Existing Classrooms
- 13. Bike / Car Parking & Drop-Off
- 08. MPR, Student Union & Food Service Improvements

## STUDENT SURVEY

top responses: existing spaces needing improvement

- 11. Library & Student Support Services
- 08. MPR, Student Union & Food Service Improvements
- 14. Outdoor Learning Courts, Quads & Gardens

top responses: desired new spaces or enhancements

- 13. Bike / Car Parking & Drop-Off
- 08. MPR, Student Union & Food Service Improvements
- 05. Elementary STEM & JrHS/HS Science Programs

## PRINCIPAL PRIORITIES

school site scopes of work

- 01. Modernize / Reconfigure Existing Classrooms
- 04. New Construction (Classrooms)
- 13. Bike / Car Parking & Drop-Off

## SCHOOL SITE COMMITTEE PRIORITIES

school site scopes of work

- 04. New Construction (Classrooms)
- 15. Exterior Play Spaces, Playfields & Hardcourts
- 08. MPR, Student Union & Food Service Improvements
- 10. Staff & Community Support

## COMMON PRIORITIES

- 01. Modernize / Reconfigure Existing Classrooms
- 08. MPR, Student Union & Food Service Improvements
- 13. Bike / Car Parking & Drop-Off

## SFMPAC PRIORITIES

district-wide scopes of work

- 12. Safety & Security
- 05. Elementary STEM & JrHS/HS Science Programs
- 01. Modernize / Reconfigure Existing Classrooms
- 08. MPR, Student Union & Food Service Improvements
- 13. Bike / Car Parking & Drop-Off





**inter + act** | BOE prioritization activity

Thank You  
SFM PAC!

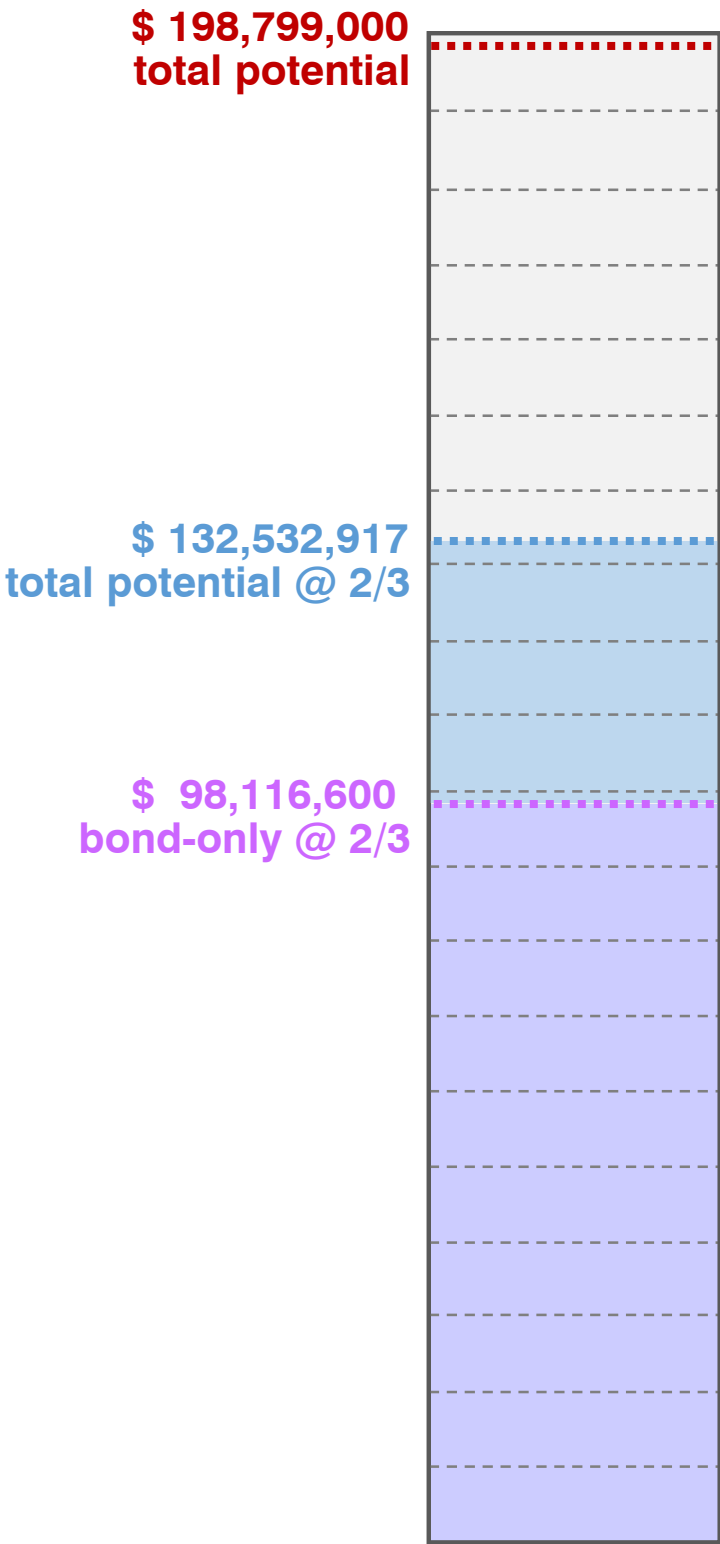


# potential funding analysis

Bond Scenario	\$ 147,175,000
State Funding Eligibility \$ 11,192,474 + \$ 3,931,452 (Modernization + New Construction)	\$ 15,123,926
Fund 49 (2019/20 through 2026/27) (CFDs)	\$ 31,300,000
Fund 25 (2019/20 through 2026/27) (Developer Fees & Redevelopment)	\$ 5,200,000

TOTAL POTENTIAL FUNDING	\$ 198,798,926
	x 2/3
AVAILABLE FOR PROJECTS (2018\$)	\$ 132,532,617

**Note:** 2/3 of the program budget allocated to projects in (2018\$). Remaining 1/3 to be used as a cost allowance to cover escalation to mid-point of construction, interim housing costs, offsite issues and as an overall program contingency.







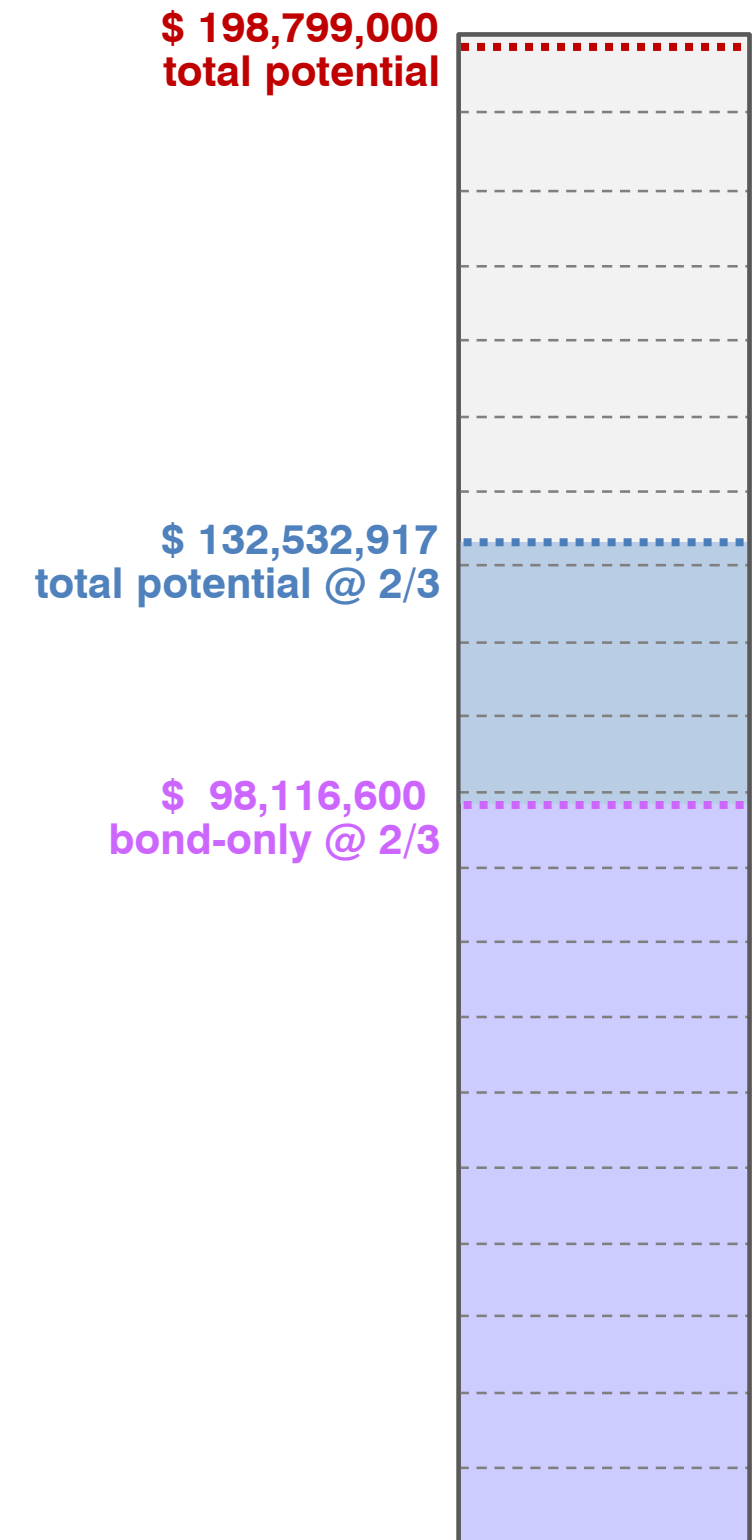
### **Scenario #1 Stakeholder & Community Prioritized Scopes**

- New MPR Buildings at Birch Lane ES, Cesar Chavez ES, North Davis ES, Willett ES
- Modernize Classrooms at Older Schools & State Eligible Sites
- High School Science, STEM/STEAM Facilities
- Safety & Security
- Bike / Car Parking & Drop-off
- Technology Infrastructure & Equipment

### **Other Scope Items for Consideration**

- Replace Portables w/ Permanent Classrooms where State New Construction Eligibility Exists
- Davis Sr. High School Aquatic Center
- Da Vinci Academy Consolidation on One Site
- Davis Children's Center
- Next Generation Learning Furniture
- Davis Adult & Community Education & DSIS

# Board of Education prioritization activity







# next steps

Final FMP Recommendation to the Board

June 14, 2018



creating sustainable places and spaces that enrich the lives of those who use them





**Classrooms, CR**  
 CDC - Child Daycare, PK - Preschool  
 TK - Transitional Kindergarten  
 KG - Kindergarten, INC - Inclusion  
 M/S - Inclusion: Moderate/Severe  
 MI - Math Intervention, R - Reading Intervention

**Electives / Labs**  
 SCI - Science, CL - Computer Lab

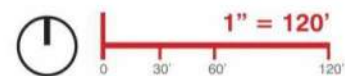
**Student Services**  
 EL - English Learners, CO - Counseling  
 INT - Intervention, OT - Occupational Therapy  
 PSY - Psychology, SP - Speech  
 RSP - Resource Specialist Program

**Shared Spaces**  
 LIB - Library, MPR - Multi-Purpose Room

**Admin / Faculty**  
 FW - Faculty Work, FL - Faculty Lounge,  
 O - Office, CF - Conference Room

**Support Spaces**  
 X - Storage, T - Toilets, U - Utility,  
 J - Janitor, K - Kitchen

- Portable Classrooms
- Main Entry
- Drop-Off
- Electrical Transformer



**EXISTING | BIRCH LANE ELEM**





- Classrooms, CR**  
CDC - Child Daycare, PK - Preschool  
TK - Transitional Kindergarten  
KG - Kindergarten, INC - Inclusion  
M/S - Inclusion: Moderate/Severe, R - Reading Intervention, MI - Math Intervention
- Electives / Labs**  
SCI - Science, CL - Computer Lab  
IL - Innovation Lab
- Student Services**  
EL - English Learners, CO - Counseling  
OT - Occupational Therapy, PSY - Psychology  
SP - Speech, RSP - Resource Specialist Program
- Shared Spaces**  
LC - Learning Center, LIB - Library  
MPR - Multi-Purpose Room
- Admin / Faculty**  
FW - Faculty Work, FL - Faculty Lounge,  
O - Office, CF - Conference Room
- Support Spaces**  
X - Storage, T - Toilets, U - Utility,  
J - Janitor, K - Kitchen
- Portable Classrooms**
- Main Entry**
- Drop-Off**
- Electrical Transformer**
- Outdoor Learning / Playfields**
- Rubberized Surface**
- Hardcourts**
- Parking Lot**
- NO WORK**
- MODERNIZATION**
- RECONFIGURE**
- NEW CONSTRUCTION**



**PROPOSED | BIRCH LANE ELEM**





**Classrooms, CR**  
 CDC - Child Daycare, PK - Preschool  
 TK - Transitional Kindergarten  
 KG - Kindergarten, INC - Inclusion  
 M/S - Inclusion: Moderate/Severe  
 MI - Math Intervention, R - Reading Intervention

**Electives / Labs**  
 SCI - Science, CL - Computer Lab

**Student Services**  
 EL - English Learners, CO - Counseling  
 INT - Intervention, OT - Occupational Therapy  
 PSY - Psychology, SP - Speech  
 RSP - Resource Specialist Program

**Shared Spaces**  
 LIB - Library, MPR - Multi-Purpose Room

**Admin / Faculty**  
 FW - Faculty Work, FL - Faculty Lounge,  
 O - Office, CF - Conference Room

**Support Spaces**  
 X - Storage, T - Toilets, U - Utility,  
 J - Janitor, K - Kitchen

- Portable Classrooms
- Main Entry
- Drop-Off
- Electrical Transformer

# EXISTING | CESAR CHAVEZ ELEM





**Classrooms, CR**  
 CDC - Child Daycare, PK - Preschool  
 TK - Transitional Kindergarten  
 KG - Kindergarten, INC - Inclusion  
 M/S - Inclusion: Moderate/Severe, R - Reading  
 Intervention, MI - Math Intervention

**Electives / Labs**  
 SCI - Science, CL - Computer Lab  
 IL - Innovation Lab

**Student Services**  
 EL - English Learners, CO - Counseling  
 OT - Occupational Therapy, PSY - Psychology  
 SP - Speech, RSP - Resource Specialist Program

**Shared Spaces**  
 LC - Learning Center, LIB - Library  
 MPR - Multi-Purpose Room

**Admin / Faculty**  
 FW - Faculty Work, FL - Faculty Lounge,  
 O - Office, CF - Conference Room

**Support Spaces**  
 X - Storage, T - Toilets, U - Utility,  
 J - Janitor, K - Kitchen

Portable Classrooms

Main Entry

Drop-Off

Electrical Transformer

Outdoor Learning /  
Playfields

Hardcourts

NO WORK

RECONFIGURE

Rubberized  
Surface

Parking Lot

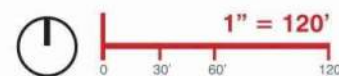
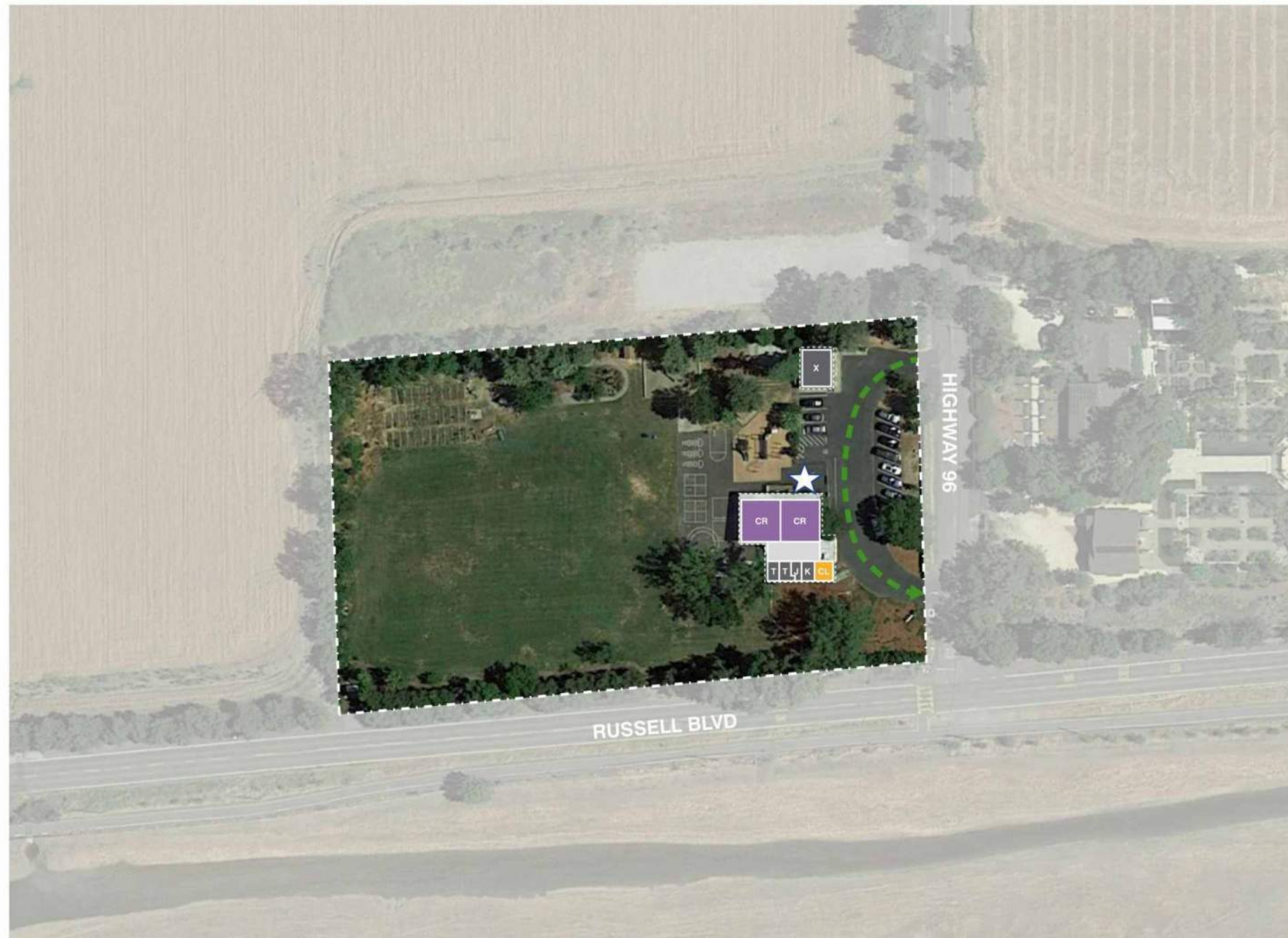
MODERNIZATION

NEW  
CONSTRUCTION

1" = 120'  
 0 30' 60' 120'

**PROPOSED | CESAR CHAVEZ ELEM**





**Classrooms, CR**  
 CDC - Child Daycare, PK - Preschool  
 TK - Transitional Kindergarten  
 KG - Kindergarten, INC - Inclusion  
 M/S - Inclusion: Moderate/Severe  
 MI - Math Intervention, R - Reading Intervention

**Electives / Labs**  
 SCI - Science, CL - Computer Lab

**Student Services**  
 EL - English Learners, CO - Counseling  
 INT - Intervention, OT - Occupational Therapy  
 PSY - Psychology, SP - Speech  
 RSP - Resource Specialist Program

**Shared Spaces**  
 LIB - Library, MPR - Multi-Purpose Room

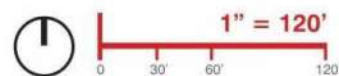
**Admin / Faculty**  
 FW - Faculty Work, FL - Faculty Lounge,  
 O - Office, CF - Conference Room

**Support Spaces**  
 X - Storage, T - Toilets, U - Utility,  
 J - Janitor, K - Kitchen

- Portable Classrooms
- Main Entry
- Drop-Off
- Electrical Transformer

# EXISTING | FAIRFIELD ELEM





**Classrooms, CR**  
 CDC - Child Daycare, PK - Preschool  
 TK - Transitional Kindergarten  
 KG - Kindergarten, INC - Inclusion  
 M/S - Inclusion: Moderate/Severe, R - Reading Intervention, MI - Math Intervention

**Electives / Labs**  
 SCI - Science, CL - Computer Lab  
 IL - Innovation Lab

**Student Services**  
 EL - English Learners, CO - Counseling  
 OT - Occupational Therapy, PSY - Psychology  
 SP - Speech, RSP - Resource Specialist Program

**Shared Spaces**  
 LC - Learning Center, LIB - Library  
 MPR - Multi-Purpose Room

**Admin / Faculty**  
 FW - Faculty Work, FL - Faculty Lounge,  
 O - Office, CF - Conference Room

**Support Spaces**  
 X - Storage, T - Toilets, U - Utility,  
 J - Janitor, K - Kitchen

Portable Classrooms

Main Entry

Drop-Off

Electrical Transformer

Outdoor Learning / Playfields

Rubberized Surface

Hardcourts

Parking Lot

NO WORK

MODERNIZATION

RECONFIGURE

NEW CONSTRUCTION

**PROPOSED | FAIRFIELD ELEM**





**Classrooms, CR**  
 CDC - Child Daycare, PK - Preschool  
 TK - Transitional Kindergarten  
 KG - Kindergarten, INC - Inclusion  
 M/S - Inclusion: Moderate/Severe  
 MI - Math Intervention, R - Reading Intervention

**Electives / Labs**  
 SCI - Science, CL - Computer Lab

**Student Services**  
 EL - English Learners, CO - Counseling  
 INT - Intervention, OT - Occupational Therapy  
 PSY - Psychology, SP - Speech  
 RSP - Resource Specialist Program

**Shared Spaces**  
 LIB - Library, MPR - Multi-Purpose Room

**Admin / Faculty**  
 FW - Faculty Work, FL - Faculty Lounge,  
 O - Office, CF - Conference Room

**Support Spaces**  
 X - Storage, T - Toilets, U - Utility,  
 J - Janitor, K - Kitchen

- Portable Classrooms
- Main Entry
- Drop-Off
- Electrical Transformer



# EXISTING | KOREMATSU ELEM





**Classrooms, CR**  
 CDC - Child Daycare, PK - Preschool  
 TK - Transitional Kindergarten  
 KG - Kindergarten, INC - Inclusion  
 M/S - Inclusion: Moderate/Severe, R - Reading Intervention, MI - Math Intervention

**Electives / Labs**  
 SCI - Science, CL - Computer Lab  
 IL - Innovation Lab

**Student Services**  
 EL - English Learners, CO - Counseling  
 OT - Occupational Therapy, PSY - Psychology  
 SP - Speech, RSP - Resource Specialist Program

**Shared Spaces**  
 LC - Learning Center, LIB - Library  
 MPR - Multi-Purpose Room

**Admin / Faculty**  
 FW - Faculty Work, FL - Faculty Lounge,  
 O - Office, CF - Conference Room

**Support Spaces**  
 X - Storage, T - Toilets, U - Utility,  
 J - Janitor, K - Kitchen

Portable Classrooms

Main Entry

Drop-Off

Electrical Transformer

Outdoor Learning / Playfields

Rubberized Surface

Hardcourts

Parking Lot

NO WORK

MODERNIZATION

RECONFIGURE

NEW CONSTRUCTION

**PROPOSED | KOREMATSU ELEM**





**Classrooms, CR**  
 CDC - Child Daycare, PK - Preschool  
 TK - Transitional Kindergarten  
 KG - Kindergarten, INC - Inclusion  
 M/S - Inclusion: Moderate/Severe  
 MI - Math Intervention, R - Reading Intervention

**Electives / Labs**  
 SCI - Science, CL - Computer Lab

**Student Services**  
 EL - English Learners, CO - Counseling  
 INT - Intervention, OT - Occupational Therapy  
 PSY - Psychology, SP - Speech  
 RSP - Resource Specialist Program

**Shared Spaces**  
 LIB - Library, MPR - Multi-Purpose Room

**Admin / Faculty**  
 FW - Faculty Work, FL - Faculty Lounge,  
 O - Office, CF - Conference Room

**Support Spaces**  
 X - Storage, T - Toilets, U - Utility,  
 J - Janitor, K - Kitchen

- Portable Classrooms
- Main Entry
- Drop-Off
- Electrical Transformer



# EXISTING | MONTGOMERY ELEM





**Classrooms, CR**  
 CDC - Child Daycare, PK - Preschool  
 TK - Transitional Kindergarten  
 KG - Kindergarten, INC - Inclusion  
 M/S - Inclusion: Moderate/Severe, R - Reading Intervention, MI - Math Intervention

**Electives / Labs**  
 SCI - Science, CL - Computer Lab  
 IL - Innovation Lab

**Student Services**  
 EL - English Learners, CO - Counseling  
 OT - Occupational Therapy, PSY - Psychology  
 SP - Speech, RSP - Resource Specialist Program

**Shared Spaces**  
 LC - Learning Center, LIB - Library  
 MPR - Multi-Purpose Room

**Admin / Faculty**  
 FW - Faculty Work, FL - Faculty Lounge,  
 O - Office, CF - Conference Room

**Support Spaces**  
 X - Storage, T - Toilets, U - Utility,  
 J - Janitor, K - Kitchen

Portable Classrooms

Main Entry

Drop-Off

Electrical Transformer

Outdoor Learning / Playfields

Rubberized Surface

Hardcourts

Parking Lot

NO WORK

MODERNIZATION

RECONFIGURE

NEW CONSTRUCTION

1" = 120'  
 0 30' 60' 120'

**PROPOSED | MONTGOMERY ELEM**





**Classrooms, CR**  
 CDC - Child Daycare, PK - Preschool  
 TK - Transitional Kindergarten  
 KG - Kindergarten, INC - Inclusion  
 M/S - Inclusion: Moderate/Severe  
 MI - Math Intervention, R - Reading Intervention

**Electives / Labs**  
 SCI - Science, CL - Computer Lab

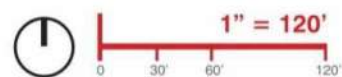
**Student Services**  
 EL - English Learners, CO - Counseling  
 INT - Intervention, OT - Occupational Therapy  
 PSY - Psychology, SP - Speech  
 RSP - Resource Specialist Program

**Shared Spaces**  
 LIB - Library, MPR - Multi-Purpose Room

**Admin / Faculty**  
 FW - Faculty Work, FL - Faculty Lounge,  
 O - Office, CF - Conference Room

**Support Spaces**  
 X - Storage, T - Toilets, U - Utility,  
 J - Janitor, K - Kitchen

- Portable Classrooms
- Main Entry
- Drop-Off
- Electrical Transformer



# EXISTING | NORTH DAVIS ELEM





**Classrooms, CR**  
 CDC - Child Daycare, PK - Preschool  
 TK - Transitional Kindergarten  
 KG - Kindergarten, INC - Inclusion  
 M/S - Inclusion: Moderate/Severe, R - Reading Intervention, MI - Math Intervention

#### Electives / Labs

SCI - Science, CL - Computer Lab  
 IL - Innovation Lab

#### Student Services

EL - English Learners, CO - Counseling  
 OT - Occupational Therapy, PSY - Psychology  
 SP - Speech, RSP - Resource Specialist Program

#### Shared Spaces

LC - Learning Center, LIB - Library  
 MPR - Multi-Purpose Room

#### Admin / Faculty

FW - Faculty Work, FL - Faculty Lounge,  
 O - Office, CF - Conference Room

#### Support Spaces

X - Storage, T - Toilets, U - Utility,  
 J - Janitor, K - Kitchen

Portable Classrooms

Main Entry

Drop-Off

Electrical Transformer

Outdoor Learning /  
 Playfields

Rubberized  
 Surface

Hardcourts

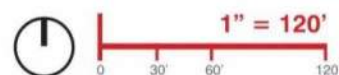
Parking Lot

NO WORK

MODERNIZATION

RECONFIGURE

NEW  
 CONSTRUCTION



# PROPOSED | NORTH DAVIS ELEM





**Classrooms, CR**  
 CDC - Child Daycare, PK - Preschool  
 TK - Transitional Kindergarten  
 KG - Kindergarten, INC - Inclusion  
 M/S - Inclusion: Moderate/Severe  
 MI - Math Intervention, R - Reading Intervention

**Electives / Labs**  
 SCI - Science, CL - Computer Lab

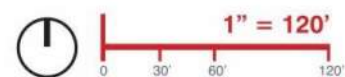
**Student Services**  
 EL - English Learners, CO - Counseling  
 INT - Intervention, OT - Occupational Therapy  
 PSY - Psychology, SP - Speech  
 RSP - Resource Specialist Program

**Shared Spaces**  
 LIB - Library, MPR - Multi-Purpose Room

**Admin / Faculty**  
 FW - Faculty Work, FL - Faculty Lounge,  
 O - Office, CF - Conference Room

**Support Spaces**  
 X - Storage, T - Toilets, U - Utility,  
 J - Janitor, K - Kitchen

- Portable Classrooms
- Main Entry
- Drop-Off
- Electrical Transformer



# EXISTING | PATWIN ELEM





**Classrooms, CR**  
 CDC - Child Daycare, PK - Preschool  
 TK - Transitional Kindergarten  
 KG - Kindergarten, INC - Inclusion  
 M/S - Inclusion: Moderate/Severe, R - Reading Intervention, MI - Math Intervention

**Electives / Labs**  
 SCI - Science, CL - Computer Lab  
 IL - Innovation Lab

**Student Services**  
 EL - English Learners, CO - Counseling  
 OT - Occupational Therapy, PSY - Psychology  
 SP - Speech, RSP - Resource Specialist Program

**Shared Spaces**  
 LC - Learning Center, LIB - Library  
 MPR - Multi-Purpose Room

**Admin / Faculty**  
 FW - Faculty Work, FL - Faculty Lounge,  
 O - Office, CF - Conference Room

**Support Spaces**  
 X - Storage, T - Toilets, U - Utility,  
 J - Janitor, K - Kitchen

Portable Classrooms

Main Entry

Drop-Off

Electrical Transformer

Outdoor Learning / Playfields

Rubberized Surface

Hardcourts

Parking Lot

NO WORK

MODERNIZATION

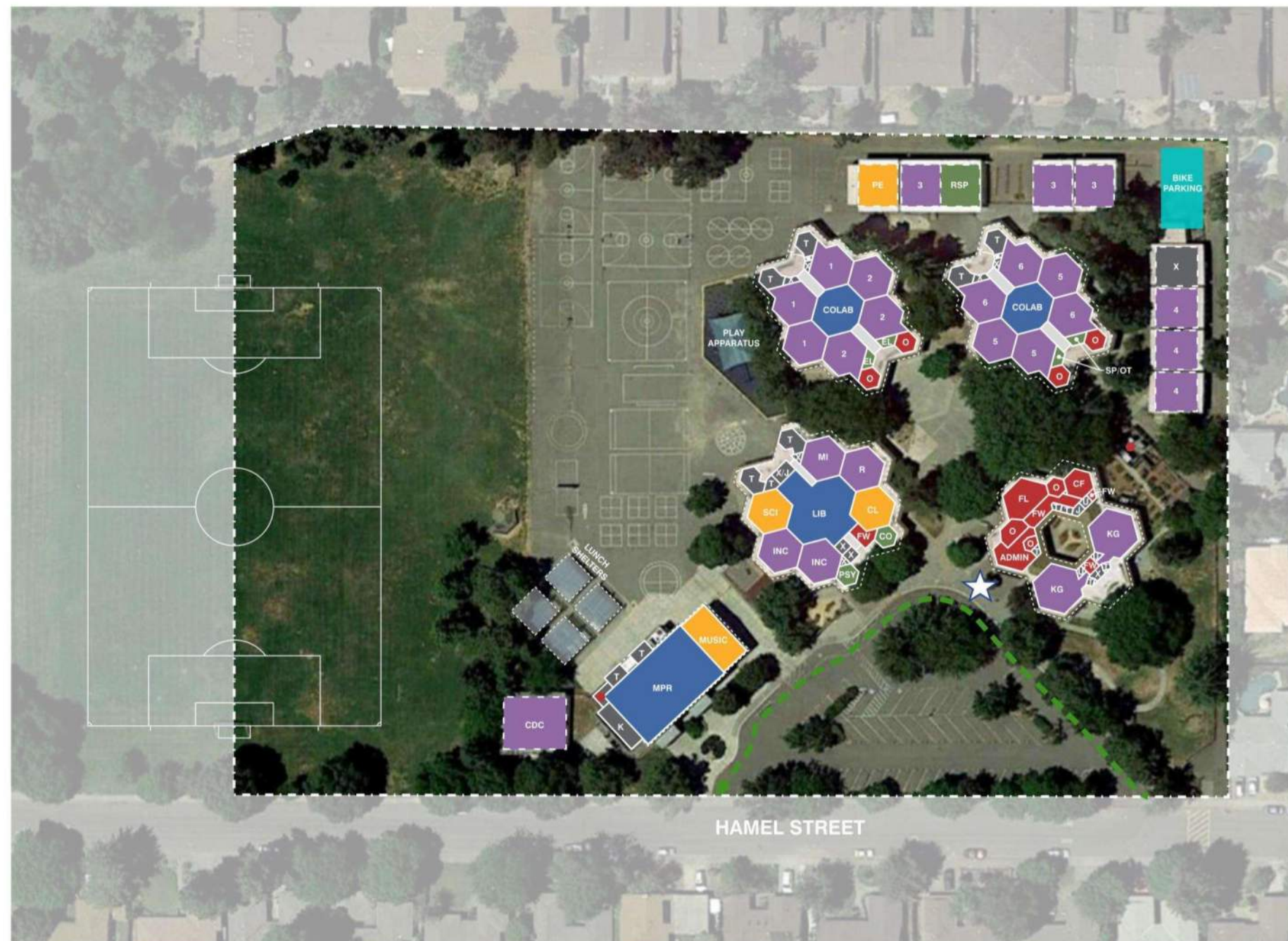
RECONFIGURE

NEW CONSTRUCTION

1" = 120'

**PROPOSED | PATWIN ELEM**





**Classrooms, CR**  
 CDC - Child Daycare, PK - Preschool  
 TK - Transitional Kindergarten  
 KG - Kindergarten, INC - Inclusion  
 M/S - Inclusion: Moderate/Severe  
 MI - Math Intervention, R - Reading Intervention

**Electives / Labs**  
 SCI - Science, CL - Computer Lab

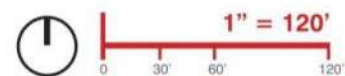
**Student Services**  
 EL - English Learners, CO - Counseling  
 INT - Intervention, OT - Occupational Therapy  
 PSY - Psychology, SP - Speech  
 RSP - Resource Specialist Program

**Shared Spaces**  
 LIB - Library, MPR - Multi-Purpose Room

**Admin / Faculty**  
 FW - Faculty Work, FL - Faculty Lounge,  
 O - Office, CF - Conference Room

**Support Spaces**  
 X - Storage, T - Toilets, U - Utility,  
 J - Janitor, K - Kitchen

- Portable Classrooms
- Main Entry
- Drop-Off
- Electrical Transformer



# EXISTING | PIONEER ELEM





**Classrooms, CR**  
 CDC - Child Daycare, PK - Preschool  
 TK - Transitional Kindergarten  
 KG - Kindergarten, INC - Inclusion  
 M/S - Inclusion: Moderate/Severe, R - Reading Intervention, MI - Math Intervention

**Electives / Labs**  
 SCI - Science, CL - Computer Lab  
 IL - Innovation Lab

**Student Services**  
 EL - English Learners, CO - Counseling  
 OT - Occupational Therapy, PSY - Psychology  
 SP - Speech, RSP - Resource Specialist Program

**Shared Spaces**  
 LC - Learning Center, LIB - Library  
 MPR - Multi-Purpose Room

**Admin / Faculty**  
 FW - Faculty Work, FL - Faculty Lounge,  
 O - Office, CF - Conference Room

**Support Spaces**  
 X - Storage, T - Toilets, U - Utility,  
 J - Janitor, K - Kitchen

Portable Classrooms

Main Entry

Drop-Off

Electrical Transformer

Outdoor Learning / Playfields

Hardcourts

NO WORK

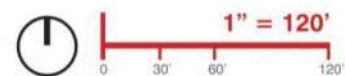
RECONFIGURE

Rubberized Surface

Parking Lot

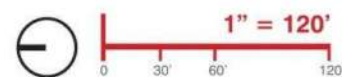
MODERNIZATION

NEW CONSTRUCTION



**PROPOSED | PIONEER ELEM**





**Classrooms, CR**  
 CDC - Child Daycare, PK - Preschool  
 TK - Transitional Kindergarten  
 KG - Kindergarten, INC - Inclusion  
 M/S - Inclusion: Moderate/Severe  
 MI - Math Intervention, R - Reading Intervention

**Electives / Labs**  
 SCI - Science, CL - Computer Lab

**Student Services**  
 EL - English Learners, CO - Counseling  
 INT - Intervention, OT - Occupational Therapy  
 PSY - Psychology, SP - Speech  
 RSP - Resource Specialist Program

**Shared Spaces**  
 LIB - Library, MPR - Multi-Purpose Room

**Admin / Faculty**  
 FW - Faculty Work, FL - Faculty Lounge,  
 O - Office, CF - Conference Room

**Support Spaces**  
 X - Storage, T - Toilets, U - Utility,  
 J - Janitor, K - Kitchen

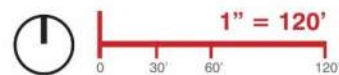
- Portable Classrooms
- Main Entry
- Drop-Off
- Electrical Transformer

**EXISTING | WILLETT ELEM**









#### Classrooms, CR

ELA - English Language Arts, FLA - Foreign Language  
 INC - Inclusion, MA - Math, MI - Math Intervention  
 R - Reading Intervention, SS - Social Studies  
 TA - Teaching Assistant

#### Electives / Labs

CS - Computer Science, HE - Home Economics  
 P - Practice, SCI - Science, TECH - Technology  
 WD - Woodshop, WT - Weight Room

#### Student Services

CO - Counseling, ED - Emotionally Disturbed  
 EL - English Learners, INTV - Intervention  
 OT - Occupational Therapy, PSY - Psychology  
 SP - Speech, RSP - Resource Specialist Program

#### Shared Spaces

LC - Learning Center, LIB - Library  
 LR - Locker Room (G - Girls, B - Boys)  
 MPR - Multi-Purpose Room

#### Admin / Faculty

FW - Faculty Work, FL - Faculty Lounge,  
 O - Office, CF - Conference Room

#### Support Spaces

X - Storage, T - Toilets, U - Utility,  
 J - Janitor, K - Kitchen

Portable Classrooms

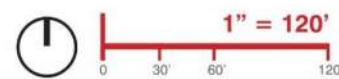
★ Main Entry

→ Drop-Off

● Electrical Transformer

# EXISTING | EMERSON JrHS





**Classrooms, CR**  
 ELA - English Language Arts, FLA - Foreign Language  
 INC - Inclusion, MA - Math, MI - Math Intervention  
 R - Reading Intervention, SS - Social Studies  
 TA - Teaching Assistant

**Electives / Labs**  
 CS - Computer Science, ENG - Engineering  
 HE - Home Economics, MKR - Maker  
 P - Practice, SCI - Science, TECH - Technology  
 WD - Woodshop, WT - Weight Room

**Student Services**  
 AC - Academic Center, CO - Counseling  
 ED - Emotionally Disturbed  
 EL - English Learners, INTV - Intervention  
 LRC - Learning Resource Center  
 OT - Occupational Therapy, PSY - Psychology  
 SP - Speech, RSP - Resource Specialist Program

**Shared Spaces**  
 CNTY - County, LC - Learning Center  
 LIB - Library, LR - Locker Room (G - Girls, B - Boys), MPR - Multi-Purpose Room  
 TM - Team Room, TR - Training Room

**Admin / Faculty**  
 FW - Faculty Work, FL - Faculty Lounge,  
 O - Office, CF - Conference Room

**Support Spaces**  
 FS - Food Service / Concessions  
 X - Storage, T - Toilets, U - Utility,  
 J - Janitor, K - Kitchen

- Portable Classrooms
- Main Entry
- Drop-Off
- Electrical Transformer
- Outdoor Learning / Playfields
- Rubberized Surface
- Hardcourts
- Parking Lot
- NO WORK
- MODERNIZATION
- RECONFIGURE
- NEW CONSTRUCTION

# PROPOSED | EMERSON JrHS





### Classrooms, CR

ELA - English Language Arts, FLA - Foreign Language  
 INC - Inclusion, MA - Math, MI - Math Intervention  
 R - Reading Intervention, SS - Social Studies  
 TA - Teaching Assistant

### Electives / Labs

CS - Computer Science, HE - Home Economics  
 P - Practice, SCI - Science, TECH - Technology  
 WD - Woodshop, WT - Weight Room

### Student Services

CO - Counseling, ED - Emotionally Disturbed  
 EL - English Learners, INTV - Intervention  
 OT - Occupational Therapy, PSY - Psychology  
 SP - Speech, RSP - Resource Specialist Program

### Shared Spaces

LC - Learning Center, LIB - Library  
 LR - Locker Room (G - Girls, B - Boys)  
 MPR - Multi-Purpose Room

### Admin / Faculty

FW - Faculty Work, FL - Faculty Lounge,  
 O - Office, CF - Conference Room

### Support Spaces

X - Storage, T - Toilets, U - Utility,  
 J - Janitor, K - Kitchen

Portable Classrooms

★ Main Entry

→ Drop-Off

● Electrical Transformer

# EXISTING | HARPER JrHS





### Classrooms, CR

ELA - English Language Arts, FLA - Foreign Language  
 INC - Inclusion, MA - Math, MI - Math Intervention  
 R - Reading Intervention, SS - Social Studies  
 TA - Teaching Assistant

### Electives / Labs

CS - Computer Science, ENG - Engineering  
 HE - Home Economics, MKR - Maker  
 P - Practice, SCI - Science, TECH - Technology  
 WD - Woodshop, WT - Weight Room

### Student Services

AC - Academic Center, CO - Counseling  
 ED - Emotionally Disturbed  
 EL - English Learners, INTV - Intervention  
 LRC - Learning Resource Center  
 OT - Occupational Therapy, PSY - Psychology  
 SP - Speech, RSP - Resource Specialist Program

### Shared Spaces

CNTY - County, LC - Learning Center  
 LIB - Library, LR - Locker Room (G - Girls, B - Boys), MPR - Multi-Purpose Room  
 TM - Team Room, TR - Training Room

### Admin / Faculty

FW - Faculty Work, FL - Faculty Lounge,  
 O - Office, CF - Conference Room

### Support Spaces

FS - Food Service / Concessions  
 X - Storage, T - Toilets, U - Utility,  
 J - Janitor, K - Kitchen

Portable Classrooms

Main Entry

Drop-Off

Electrical Transformer

Outdoor Learning /  
 Playfields

Rubberized  
 Surface

Hardcourts

Parking Lot

NO WORK

MODERNIZATION

RECONFIGURE

NEW  
 CONSTRUCTION

# PROPOSED | HARPER JrHS





1" = 120'

0 30' 60' 120'

#### Classrooms, CR

ELA - English Language Arts, FLA - Foreign Language  
 INC - Inclusion, MA - Math, MI - Math Intervention  
 R - Reading Intervention, SS - Social Studies  
 TA - Teaching Assistant

#### Electives / Labs

CS - Computer Science, HE - Home Economics  
 P - Practice, SCI - Science, TECH - Technology  
 WD - Woodshop, WT - Weight Room

#### Student Services

CO - Counseling, ED - Emotionally Disturbed  
 EL - English Learners, INTV - Intervention  
 OT - Occupational Therapy, PSY - Psychology  
 SP - Speech, RSP - Resource Specialist Program

#### Shared Spaces

LC - Learning Center, LIB - Library  
 LR - Locker Room (G - Girls, B - Boys)  
 MPR - Multi-Purpose Room

#### Admin / Faculty

FW - Faculty Work, FL - Faculty Lounge,  
 O - Office, CF - Conference Room

#### Support Spaces

X - Storage, T - Toilets, U - Utility,  
 J - Janitor, K - Kitchen

Portable Classrooms

Main Entry

Drop-Off

Electrical Transformer

# EXISTING | HOLMES JrHS





### Classrooms, CR

ELA - English Language Arts, FLA - Foreign Language  
 INC - Inclusion, MA - Math, MI - Math Intervention  
 R - Reading Intervention, SS - Social Studies  
 TA - Teaching Assistant

### Electives / Labs

CS - Computer Science, ENG - Engineering  
 HE - Home Economics, MKR - Maker  
 P - Practice, SCI - Science, TECH - Technology  
 WD - Woodshop, WT - Weight Room

### Student Services

AC - Academic Center, CO - Counseling  
 ED - Emotionally Disturbed  
 EL - English Learners, INTV - Intervention  
 LRC - Learning Resource Center  
 OT - Occupational Therapy, PSY - Psychology  
 SP - Speech, RSP - Resource Specialist Program

### Shared Spaces

CNTY - County, LC - Learning Center  
 LIB - Library, LR - Locker Room (G - Girls, B - Boys), MPR - Multi-Purpose Room  
 TM - Team Room, TR - Training Room

### Admin / Faculty

FW - Faculty Work, FL - Faculty Lounge,  
 O - Office, CF - Conference Room

### Support Spaces

FS - Food Service / Concessions  
 X - Storage, T - Toilets, U - Utility,  
 J - Janitor, K - Kitchen

Portable Classrooms

Main Entry

Drop-Off

Electrical Transformer

Outdoor Learning / Playfields

Rubberized Surface

Hardcourts

Parking Lot

NO WORK

MODERNIZATION

RECONFIGURE

NEW CONSTRUCTION

**PROPOSED | HOLMES JrHS**





### Classrooms, CR

ELA - English Language Arts, FLA - Foreign Language  
INC - Inclusion, MA - Math, MI - Math Intervention  
R - Reading Intervention, SS - Social Studies  
TA - Teaching Assistant

### Electives / Labs

CS - Computer Science, HE - Home Economics  
P - Practice, SCI - Science, TECH - Technology  
WD - Woodshop, WT - Weight Room

### Student Services

CO - Counseling, ED - Emotionally Disturbed  
EL - English Learners, INTV - Intervention  
OT - Occupational Therapy, PSY - Psychology  
SP - Speech, RSP - Resource Specialist Program

### Shared Spaces

LC - Learning Center, LIB - Library  
LR - Locker Room (G - Girls, B - Boys)  
MPR - Multi-Purpose Room

### Admin / Faculty

FW - Faculty Work, FL - Faculty Lounge,  
O - Office, CF - Conference Room

### Support Spaces

X - Storage, T - Toilets, U - Utility,  
J - Janitor, K - Kitchen

Portable Classrooms

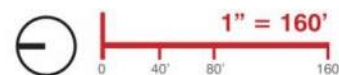
Main Entry

Drop-Off

Electrical Transformer

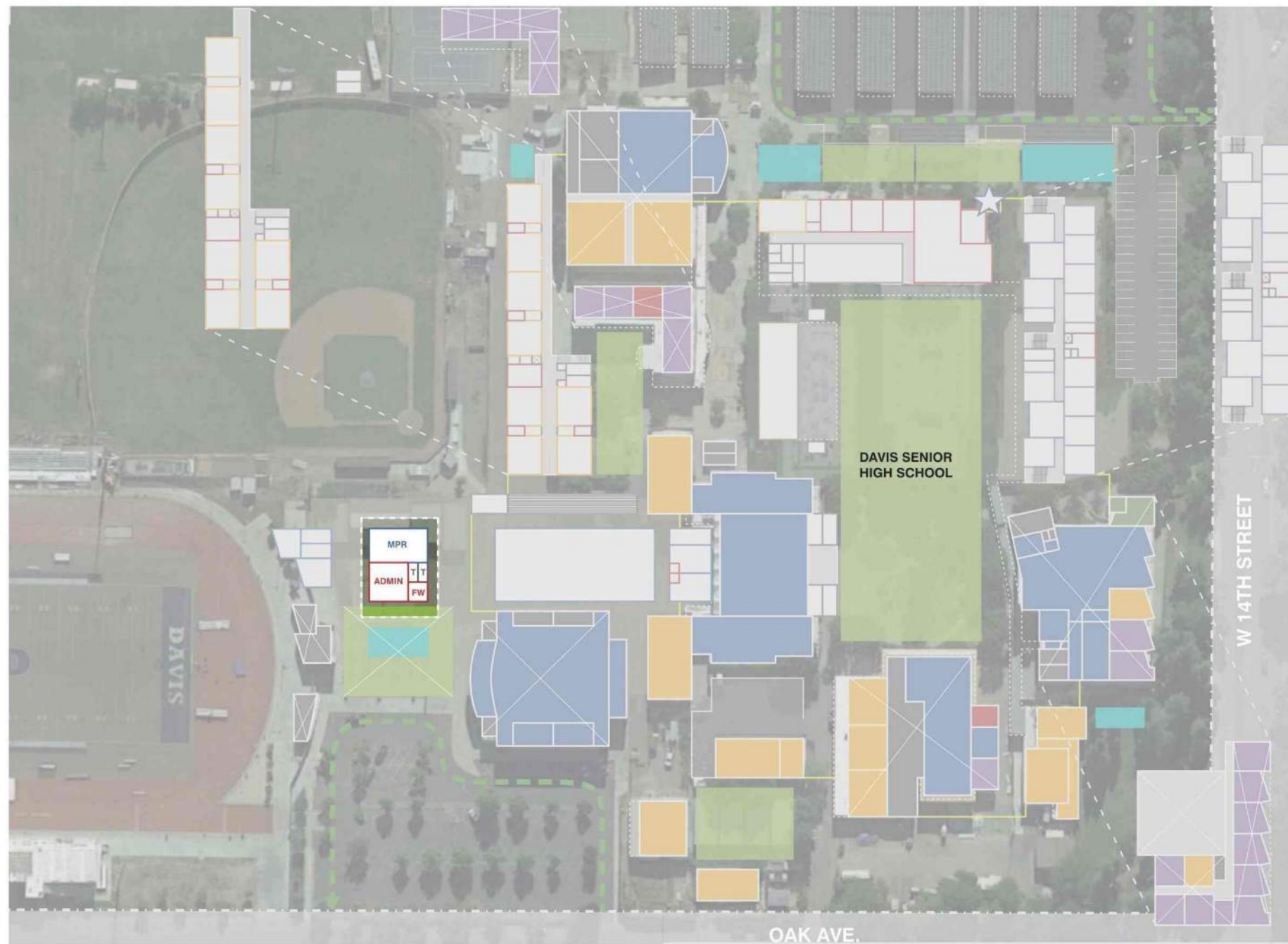
# EXISTING | DAVIS SrHS





**PROPOSED | DAVIS SrHS**





#### Classrooms, CR

ELA - English Language Arts, FLA - Foreign Language  
 INC - Inclusion, MA - Math, MI - Math Intervention  
 R - Reading Intervention, SS - Social Studies  
 TA - Teaching Assistant

#### Electives / Labs

CS - Computer Science, ENG - Engineering  
 HE - Home Economics, MKR - Maker  
 P - Practice, SCI - Science, TECH - Technology  
 WD - Woodshop, WT - Weight Room

#### Student Services

AC - Academic Center, CO - Counseling  
 ED - Emotionally Disturbed  
 EL - English Learners, INTV - Intervention  
 LRC - Learning Resource Center  
 OT - Occupational Therapy, PSY - Psychology  
 SP - Speech, RSP - Resource Specialist Program

#### Shared Spaces

CNTY - County, LC - Learning Center  
 LIB - Library, LR - Locker Room (G - Girls, B - Boys), MPR - Multi-Purpose Room  
 TM - Team Room, TR - Training Room

#### Admin / Faculty

FW - Faculty Work, FL - Faculty Lounge,  
 O - Office, CF - Conference Room

#### Support Spaces

FS - Food Service / Concessions  
 X - Storage, T - Toilets, U - Utility,  
 J - Janitor, K - Kitchen

Portable Classrooms

★ Main Entry

→ Drop-Off

● Electrical Transformer

Outdoor Learning / Playfields

Rubberized Surface

Hardcourts

Parking Lot

NO WORK

MODERNIZATION

RECONFIGURE

NEW CONSTRUCTION

**PROPOSED | ADULT & CMITY ED**





#### Classrooms, CR

ELA - English Language Arts, FLA - Foreign Language  
INC - Inclusion, MA - Math, MI - Math Intervention  
R - Reading Intervention, SS - Social Studies  
TA - Teaching Assistant

#### Electives / Labs

CS - Computer Science, HE - Home Economics  
P - Practice, SCI - Science, TECH - Technology  
WD - Woodshop, WT - Weight Room

#### Student Services

CO - Counseling, ED - Emotionally Disturbed  
EL - English Learners, INTV - Intervention  
OT - Occupational Therapy, PSY - Psychology  
SP - Speech, RSP - Resource Specialist Program

#### Shared Spaces

LC - Learning Center, LIB - Library  
LR - Locker Room (G - Girls, B - Boys)  
MPR - Multi-Purpose Room

#### Admin / Faculty

FW - Faculty Work, FL - Faculty Lounge,  
O - Office, CF - Conference Room

#### Support Spaces

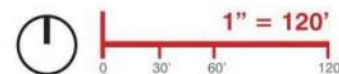
X - Storage, T - Toilets, U - Utility,  
J - Janitor, K - Kitchen

□ Portable Classrooms

★ Main Entry

→ Drop-Off

● Electrical Transformer



# EXISTING I.D.A. VINCI CHARTER (HS)





1" = 120'

0 30' 60' 120'

#### Classrooms, CR

ELA - English Language Arts, FLA - Foreign Language  
 INC - Inclusion, MA - Math, MI - Math Intervention  
 R - Reading Intervention, SS - Social Studies  
 TA - Teaching Assistant

#### Electives / Labs

CS - Computer Science, ENG - Engineering  
 HE - Home Economics, MKR - Maker  
 P - Practice, SCI - Science, TECH - Technology  
 WD - Woodshop, WT - Weight Room

#### Student Services

AC - Academic Center, CO - Counseling  
 ED - Emotionally Disturbed  
 EL - English Learners, INTV - Intervention  
 LRC - Learning Resource Center  
 OT - Occupational Therapy, PSY - Psychology  
 SP - Speech, RSP - Resource Specialist Program

#### Shared Spaces

CNTY - County, LC - Learning Center  
 LIB - Library, LR - Locker Room (G - Girls, B - Boys), MPR - Multi-Purpose Room  
 TM - Team Room, TR - Training Room

#### Admin / Faculty

FW - Faculty Work, FL - Faculty Lounge,  
 O - Office, CF - Conference Room

#### Support Spaces

FS - Food Service / Concessions  
 X - Storage, T - Toilets, U - Utility,  
 J - Janitor, K - Kitchen

Portable Classrooms

Main Entry

Drop-Off

Electrical Transformer

Outdoor Learning / Playfields

Rubberized Surface

Hardcourts

Parking Lot

NO WORK

MODERNIZATION

RECONFIGURE

NEW CONSTRUCTION

# PROPOSED I.D.A. VINCI CHARTER





#### Classrooms, CR

CDC - Child Daycare, PK - Preschool  
TK - Transitional Kindergarten  
KG - Kindergarten, INC - Inclusion  
M/S - Inclusion: Moderate/Severe

#### Electives / Labs

SCI - Science, CL - Computer Lab

#### Student Services

EL - English Learners, CO - Counseling  
MI - Math Intervention  
OT - Occupational Therapy, PSY - Psychology  
R - Reading Intervention, SP - Speech  
RSP - Resource Specialist Program

#### Shared Spaces

LIB - Library, MPR - Multi-Purpose Room

#### Admin / Faculty

FW - Faculty Work, FL - Faculty Lounge,  
O - Office, CF - Conference Room

#### Support Spaces

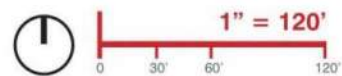
X - Storage, T - Toilets, U - Utility,  
J - Janitor, K - Kitchen

Portable Classrooms

★ Main Entry

→ Drop-Off

● Electrical Transformer



# EXISTING | DJUSD CHILDREN'S CENTER





#### Classrooms, CR

ELA - English Language Arts, FLA - Foreign Language  
 INC - Inclusion, MA - Math, MI - Math Intervention  
 R - Reading Intervention, SS - Social Studies  
 TA - Teaching Assistant

#### Electives / Labs

CS - Computer Science, ENG - Engineering  
 HE - Home Economics, MKR - Maker  
 P - Practice, SCI - Science, TECH - Technology  
 WD - Woodshop, WT - Weight Room

#### Student Services

AC - Academic Center, CO - Counseling  
 ED - Emotionally Disturbed  
 EL - English Learners, INTV - Intervention  
 LRC - Learning Resource Center  
 OT - Occupational Therapy, PSY - Psychology  
 SP - Speech, RSP - Resource Specialist Program

#### Shared Spaces

CNTY - County, LC - Learning Center  
 LIB - Library, LR - Locker Room (G - Girls, B - Boys), MPR - Multi-Purpose Room  
 TM - Team Room, TR - Training Room

#### Admin / Faculty

FW - Faculty Work, FL - Faculty Lounge,  
 O - Office, CF - Conference Room

#### Support Spaces

FS - Food Service / Concessions  
 X - Storage, T - Toilets, U - Utility,  
 J - Janitor, K - Kitchen

Portable Classrooms

Main Entry

Drop-Off

Electrical Transformer

Outdoor Learning /  
 Playfields

Rubberized  
 Surface

Hardcourts

Parking Lot

NO WORK

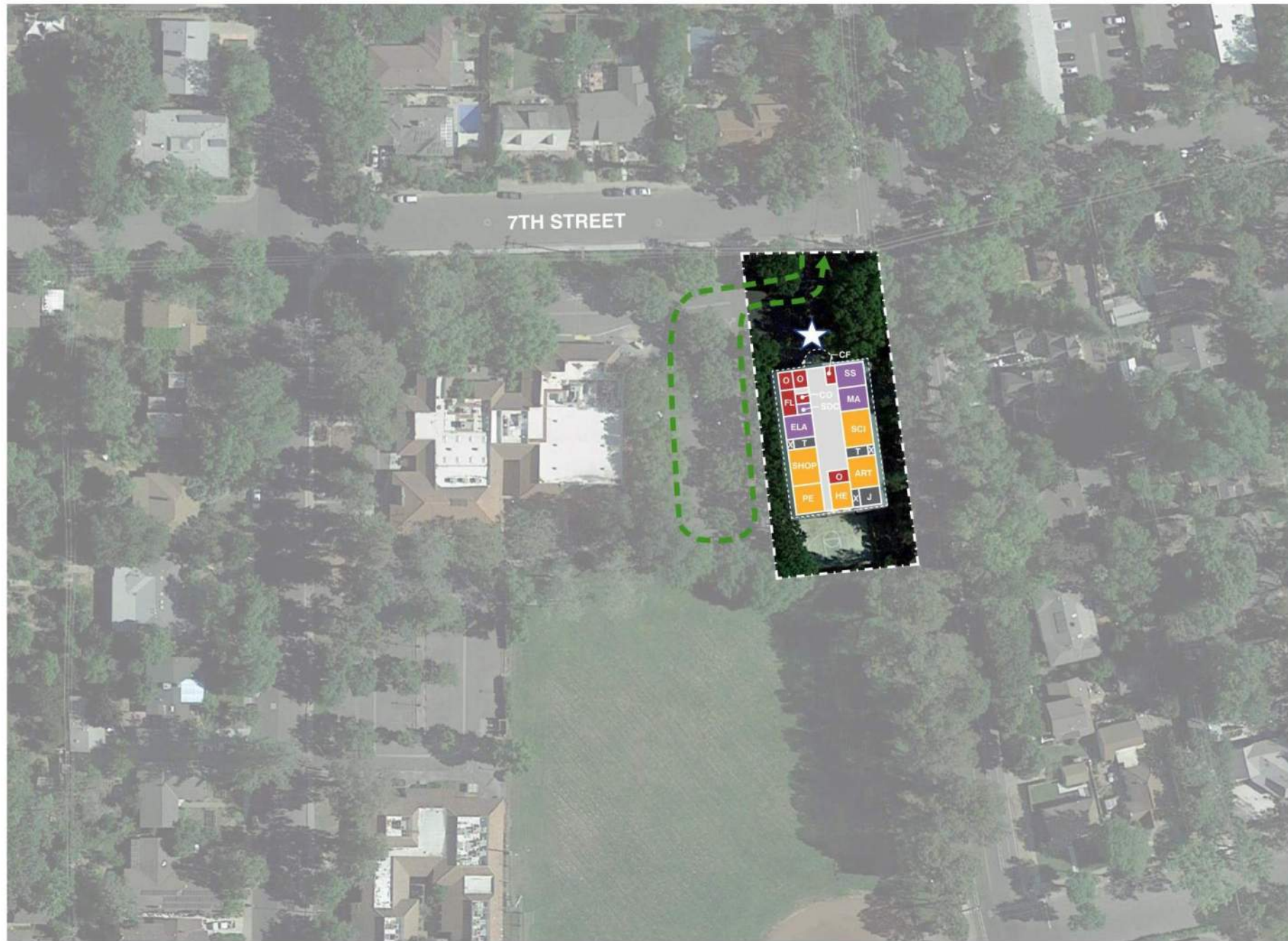
MODERNIZATION

RECONFIGURE

NEW  
 CONSTRUCTION

**PROPOSED | DJUSD CHILDREN'S CTR**





#### Classrooms, CR

ELA - English Language Arts, FLA - Foreign Language  
 INC - Inclusion, MA - Math, MI - Math Intervention  
 R - Reading Intervention, SS - Social Studies  
 TA - Teaching Assistant

#### Electives / Labs

CS - Computer Science, HE - Home Economics  
 P - Practice, SCI - Science, TECH - Technology  
 WD - Woodshop, WT - Weight Room

#### Student Services

CO - Counseling, ED - Emotionally Disturbed  
 EL - English Learners, INTV - Intervention  
 OT - Occupational Therapy, PSY - Psychology  
 SP - Speech, RSP - Resource Specialist Program

#### Shared Spaces

LC - Learning Center, LIB - Library  
 LR - Locker Room (G - Girls, B - Boys)  
 MPR - Multi-Purpose Room

#### Admin / Faculty

FW - Faculty Work, FL - Faculty Lounge,  
 O - Office, CF - Conference Room

#### Support Spaces

X - Storage, T - Toilets, U - Utility,  
 J - Janitor, K - Kitchen

Portable Classrooms

Main Entry

Drop-Off

Electrical Transformer



# EXISTING | ML KING (Jr) HIGH





1" = 120'

0 30' 60' 120'

#### Classrooms, CR

ELA - English Language Arts, FLA - Foreign Language  
INC - Inclusion, MA - Math, MI - Math Intervention  
R - Reading Intervention, SS - Social Studies  
TA - Teaching Assistant

#### Electives / Labs

CS - Computer Science, ENG - Engineering  
HE - Home Economics, MKR - Maker  
P - Practice, SCI - Science, TECH - Technology  
WD - Woodshop, WT - Weight Room

#### Student Services

AC - Academic Center, CO - Counseling  
ED - Emotionally Disturbed  
EL - English Learners, INTV - Intervention  
LRC - Learning Resource Center  
OT - Occupational Therapy, PSY - Psychology  
SP - Speech, RSP - Resource Specialist Program

#### Shared Spaces

CNTY - County, LC - Learning Center  
LIB - Library, LR - Locker Room (G - Girls, B - Boys), MPR - Multi-Purpose Room  
TM - Team Room, TR - Training Room

#### Admin / Faculty

FW - Faculty Work, FL - Faculty Lounge,  
O - Office, CF - Conference Room

#### Support Spaces

FS - Food Service / Concessions  
X - Storage, T - Toilets, U - Utility,  
J - Janitor, K - Kitchen

Portable Classrooms

Main Entry

Drop-Off

Electrical Transformer

Outdoor Learning /  
Playfields

Rubberized  
Surface

Hardcourts

Parking Lot

NO WORK

MODERNIZATION

RECONFIGURE

NEW  
CONSTRUCTION

# PROPOSED | ML KING (Jr) HIGH