



# DISTRICT SAFETY UPDATE

LAURA JUANITAS, DIRECTOR STUDENT SERVICES  
DAVID BURKE, DIRECTOR OF FACILITIES  
MARCH 1, 2018



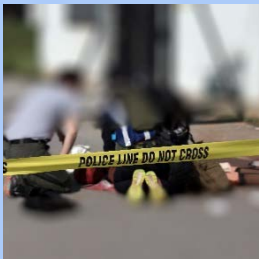
# OVERVIEW



**Secure campuses:** protect students and staff



**Evaluate:** Identify reasonable and effective improvements in safety and security



**Training and Communications:** Enhance staff training opportunities and improve messaging to our community

# SAFETY EVALUATIONS



**Comprehensive Safety Study,  
March 2016**

**YOLO COUNTY GRAND JURY**

**Yolo County Grand Jury Report  
on School Safety, September  
2017**

**Compliance Checklist for a Comprehensive School Safety Plan**  
**California Education Code Sections 32280–32289**

Grade levels: \_\_\_\_\_ Date: \_\_\_\_\_

**Annual Updates to School Site  
Comprehensive Safety Plans**

# SAFETY MEASURES



RECOMMENDATIONS	ESTABLISHED
Safety policy review	Comprehensive Safety Plans; Emergency and post-emergency protocols
Incident debriefs	Administration, staff and police debriefs following events
Gun Prohibitions	BP 5515.7, No guns allowed on campus; AB 424, Yearly notice to parents urging that all guns be in locked safe
Social-emotional supports	Prevention and Crisis Managers; Elementary and Secondary Counselors
Threat and Risk Assessment protocols	Administrators, Counselors, and Nurses trained; partner with police
Emergency supplies in case of lockdown	Emergency supplies and instructions in every student space; refreshed every 5 years
Anonymous reporting system	Stop!T App <u>at secondary schools</u> ; considering elementary campuses

# SAFETY MEASURES



## RECOMMENDATIONS

## ESTABLISHED

Radios	Established district-wide emergency channels; staff training
Visitor check-in system	ID scanned through Registered Sex Offender database; provides ID badges to identify visitors
Safety staff	School Resource Officer; District Safety Coordinator; Campus Supervisors
Lockdown, evacuation, teacher down drills	Practiced twice a year at every site including District Office; observed by District Safety Coordinator/Fire Marshal
Emergency communication test	Verifies phone, email and text contacts for parent communication
Police Partnership	Close communication with police; Police and fire perform active shooter simulation on school campus

# SAFETY MEASURES



## RECOMMENDATIONS

## ESTABLISHED

**Campus supervisor training**

**Drug assessment training by California Highway Patrol;  
Student searches; Non-violent Crisis Intervention  
training**

**Obscure views inside  
classrooms**

**Curtains and blinds; paper to cover windows in doors**

**Improved key control**

**Improved site and district procedures to safeguard keys**

**Door and lock maintenance**

**All doors can be locked from inside**

**Identify and eliminate  
climbing aids to roofs**

**M & O working with Principals to identify areas of  
concern**

**Remove obscuring  
vegetation**

**M & O working with Principals to identify areas of  
concern**

# PLANNED SAFETY IMPROVEMENTS



RECOMMENDATIONS	PROGRESS	TIMELINE
Strategic fencing	Raising kinder fences from 4' to 6' (Phase 1: BLE, NDE, Pioneer)	Spring 2018
School signage	Consistent signage across district; architect plan: cost TBD	Spring 2018
Door Blocks	Piloting 50 classrooms @ ~\$10/classroom	Spring 2018
Active Shooter Training	Evaluating programs	Spring 2018
Active Shooter Drills	DPD practice on school campus yearly; Developing protocol for staff and student drills	Spring 2018
Intrusion detection	Increased use of Raptor; Staff to wear ID	Spring 2018

# PROPOSED SAFETY IMPROVEMENTS



RECOMMENDATIONS	PROGRESS	TIMELINE
Perimeter safety fencing	Prioritized fencing projects	TBD
Keep doors locked	Provide additional keys to staff; explore keycard system	TBD
Define site property lines	Identify landscaping or fence options; work with City	TBD
Relocate bike paths that pass through campuses	Identifying options with City	TBD
Trespassing notification	Signage at site perimeters; Improved use of Raptor; Staff identification	TBD



# CHALLENGES



## Low Crime Rate

DJUSD does not qualify for safety grants due to low City crime rate and few incidents of school violence

## Open Space

Fencing of schools impacts shared use with City parks

## Student Mental Health

Must balance need for safety training with impact on student mental health

## Cost

Fencing, signage and keycard entries are expensive



# NEXT STEPS



## Secure campuses:

Physical and procedural improvements



## Ongoing Evaluation:

Ongoing conversations at school sites, with law enforcement

## Training and Communications:

- New and appropriate staff and student training
- Improve parent communication about safety at the school site and district level





# QUESTIONS AND REFLECTIONS

