

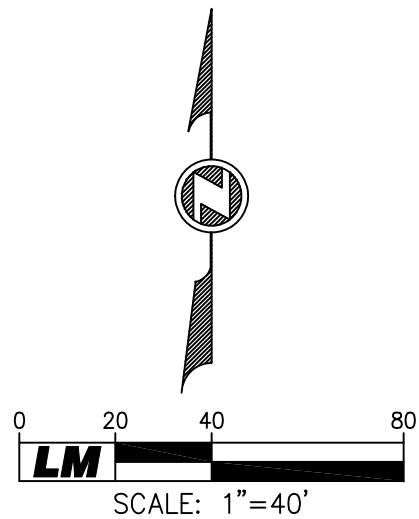
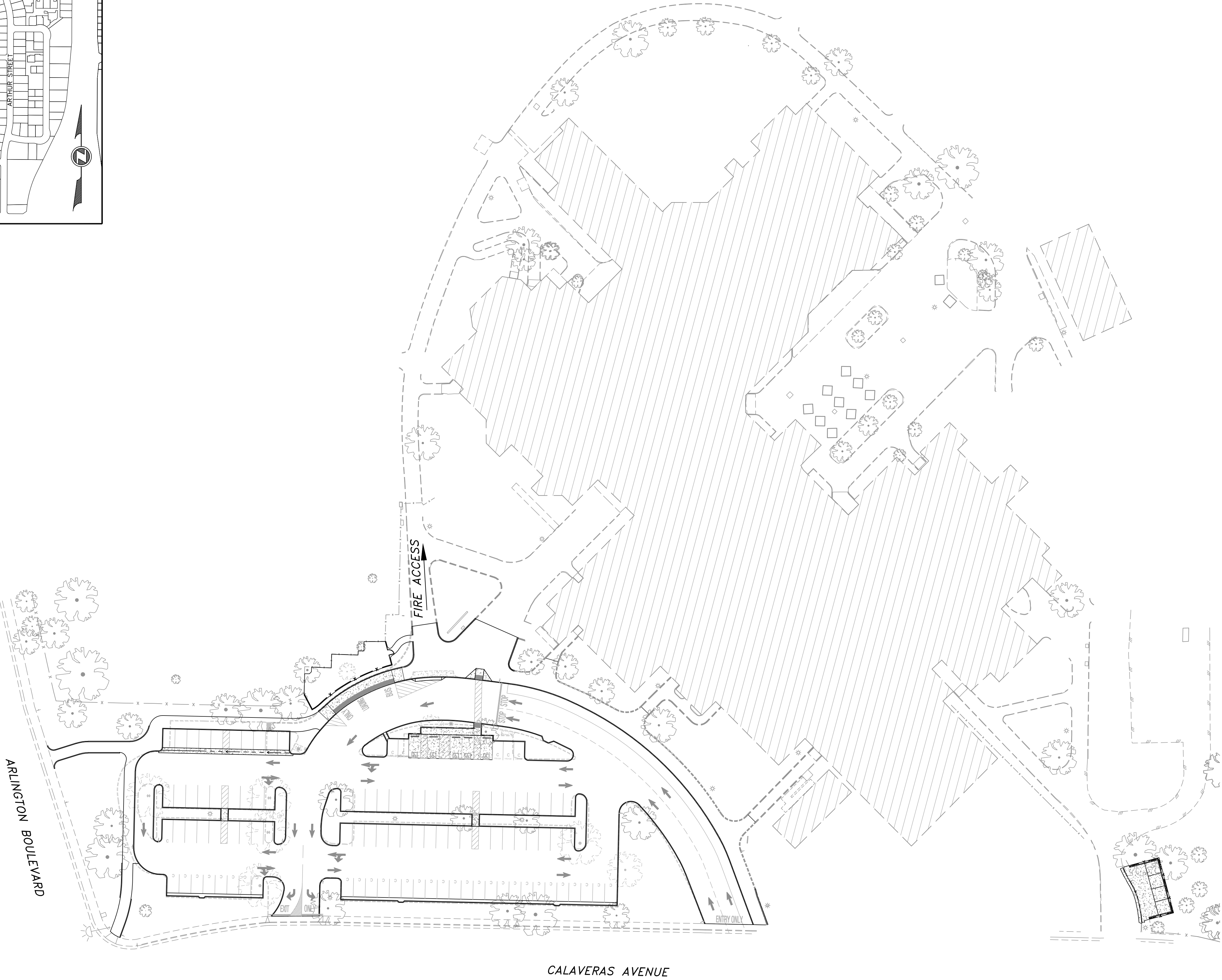
PREVIOUS PROJECTS	
PROJECT	DSA#
TOILET BUILDING	02-104164
ALTS TO 14 CLSRM. BLDGS	02-100273
RELOCATION OF 2 BLDGS	02-113701
ALTS TO 1-GYM ROOFING	02-114292
ALTS TO 1-GYM/ CLSRM BLDGS	02-114331

APPLICABLE CODES
TITLE 19 CCR, PUBLIC SAFETY, STATE FIRE MARSHALL REGULATIONS
TITLE 24 CCR, PART 1 - 2016 BUILDING STANDARDS ADMINISTRATIVE CODE
TITLE 24 CCR, PART 2 - 2016 CALIFORNIA BUILDING CODE, VOL. 1 & 2 (CBC) CA AMENDED
TITLE 24 CCR, PART 3 - 2016 CALIFORNIA ELECTRICAL CODE (CEC) CA AMENDED
TITLE 24 CCR, PART 4 - 2016 CALIFORNIA MECHANICAL CODE (CMC) CA AMENDED
TITLE 24 CCR, PART 5 - 2016 CALIFORNIA PLUMBING CODE (CPC) CA AMENDED
TITLE 24 CCR, PART 6 - 2016 CALIFORNIA ENERGY CODE
TITLE 24 CCR, PART 9 - 2016 CALIFORNIA FIRE CODE (CFC) CA AMENDED
TITLE 24 CCR, PART 12 - 2016 CALIFORNIA REFERENCED STANDARDS
PARTIAL LIST - SEE CBC CH. 35 AND CFC CH. 45
2015 NFPA 13, INSTALLATION OF SPRINKLER SYSTEMS (CA AMENDED)
2015 NFPA 14, INSTALLATION OF STANDPIPE AND HOSE SYSTEMS
2015 NFPA 17, DRY CHEMICAL EXTINGUISHING SYSTEMS
2015 NFPA 17A, WET CHEMICAL EXTINGUISHING SYSTEMS
2015 NFPA 20, INSTALLATION OF STATIONARY PUMPS FOR FIRE PROTECTION
2015 NFPA 22, WATER TANKS FOR PRIVATE FIRE PROTECTION
2015 NFPA 24, INSTALLATION OF PRIVATE FIRE SERVICE MAINS AND THEIR APPURTENANCES
2015 NFPA 25, INSPECTION, TESTING, MAINTENANCE OF WATER-BASED FIRE PROTECTION SYSTEMS (CA AMENDED)
2015 NFPA 72, NATIONAL FIRE ALARM AND SIGNALING CODE (CA AMENDED); SEE UL STD 1971 FOR "VISUAL DEVICES"
2015 ICC 300, BLEACHERS, FOLDING AND TELESCOPE SEATING, AND GRANDSTANDS (ICC/ANSI 300-2002)

PHASE 1 - PARKING LOT IMPROVEMENT PLANS FOR EMERSON JUNIOR HIGH SCHOOL

CITY OF DAVIS

YOLO COUNTY, CA



LEGEND	
PROPOSED	EXISTING
18" SD	18" SD
12" SD	12" SD
8" SS	8" SS
8" SFM	8" SFM
6" W	6" W
10" F	10" F
2" GAS	2" GAS
2" E	(UG)E
(UG)T	(UG)T
PP, TP, JP	PP, TP, JP
OR	
60.50 EP	60.50 EP
60.50 TC	60.50 TC
60.50 AC	60.50 AC
60.50 FC	60.50 FC
60.50+ TC	60.50+ TC
60.50+ FC	60.50+ FC
STORM DRAIN AND MANHOLE	
PERFORATED STORM DRAIN	
SANITARY SEWER AND MANHOLE	
SANITARY SEWER FORCE MAIN	
SEWER PUMP STATION	
FIRE HYDRANT AND VALVE ASSEMBLY	
WATER MAIN, VALVE, & BLOWOFF VALVE	
FIRE SERVICE MAIN	
JOINT UTILITY TRENCH	
GAS MAIN	
ELECTRICAL LINE	
TELEPHONE LINE	
STREET LIGHT CONDUIT, WIRING & PULL BOX	
STREET LIGHT SERVICE POINT AT UTILITY CO. BOX	
STREET LIGHT AND POLE	
UTILITY POLE WITH DOWN GUY & ANCHOR	
POWER POLE, TELEPHONE POLE, JOINT POLE	
FENCE	
VERTICAL CURB, GUTTER & SIDEWALK WITH DRIVEWAY	
CATCH BASIN OR DRAINAGE INLET	
FLOWLINE OF DITCH OR SWALE	
DIRECTION OF SURFACE DRAINAGE FLOW	
CUT OR FILL SLOPE	
RIGHT OF WAY OR PROPERTY LINE	
STREET CENTERLINE OR BASELINE	
SURVEY MONUMENT	
SIGN	
TREE	
TREE TO BE REMOVED	
EXISTING GROUND SURFACE ELEVATION	
EP (EDGE OF PAVEMENT LINE AND GRADE ELEVATION)	
TC (TOP OF CURB)/ FL (FLOW LINE) GRADE	
AC (ASPHALT CONCRETE) GRADE	
FINISHED CONCRETE GRADE	
PUBLIC UTILITY EASEMENT	
ROLL CURB, GUTTER, & SIDEWALK	
MATCH GRADE POINT (FIELD VERIFY, TYP.)	

SHEET INDEX	
NO.	DESCRIPTION
1	C-001 TITLE SHEET
2	C-002 ABBREVIATIONS & GENERAL NOTES
3	C-101 TOPOGRAPHIC SURVEY & DEMOLITION PLAN
4	C-201 CIVIL SITE PLAN
5	C-201.1 CIVIL SITE PLAN-ADD ALT 1
6	C-201.2 CIVIL SITE PLAN-ADD ALT 2
7	C-301 GRADING, DRAINAGE, AND UTILITY PLAN
8	C-302 GRADING, DRAINAGE, AND UTILITY PLAN
9	C-301.3 GRADING, DRAINAGE, AND UTILITY PLAN-ADD ALT 3
10	C-401 SIGNING & STRIPING PLAN
11	C-501 EROSION & SEDIMENTATION CONTROL PLAN
12	C-601 DETAILS
13	C-602 DETAILS
14	C-701 CROSS SECTIONS

GEOTECHNICAL REPORT	
"PAVEMENT IMPROVEMENT RECOMMENDATIONS - EMERSON JUNIOR HIGH SCHOOL PAVEMENT IMPROVEMENTS" DATED APRIL 11, 2017, PREPARED BY WALLACE KUHLMAN & ASSOCIATES, 3050 INDUSTRIAL AVENUE, WEST SACRAMENTO, CALIFORNIA 95691, PHONE: (916) 372-1434.	

BENCH MARK	
DESIGNATION - RWF1	
PID - DK4487	
DESCRIPTION:	
THE STATION IS LOCATED ABOUT 2.5 MI (4.0 KM) NORTH OF DAVIS AND IS SET IN THE HEADWALL OF A DRAINAGE CANAL.	
TO REACH THE STATION FROM THE INTERSECTION OF STATE HIGHWAY 113 AND YOLO COUNTY ROAD 29, GO EAST ON ROAD 29 FOR 0.8 MI (1.3 KM) TO A SIDE ROAD RIGHT, ROAD 101A. TURN RIGHT AND GO SOUTHEAST ON ROAD 101A FOR ABOUT 0.3 MI (0.5 KM) TO THE STATION ON THE RIGHT.	
THE STATION IS A 2 IN ALUMINUM DISK SET IN THE TOP OF THE SOUTH END OF A CONCRETE HEADWALL ON THE WEST SIDE OF ROAD 101A, THE NORTH EXTENSION OF F STREET IN DAVIS. IT IS 47 FT (14.3 M) WEST OF THE CENTERLINE OF THE ROAD, 3.5 FT (1.1 M) NORTHEAST OF A 5 IN STEEL CABLE GATE POST AND 0.8 FT (0.2 M) NORTH OF THE SOUTH END OF THE HEADWALL.	
ELEVATION = 48.1	
DATUM: NAVD 88	

BENCH MARK	
DESIGNATION - RWF1	
PID - DK4487	
DESCRIPTION:	
THE STATION IS LOCATED ABOUT 2.5 MI (4.0 KM) NORTH OF DAVIS AND IS SET IN THE HEADWALL OF A DRAINAGE CANAL.	
TO REACH THE STATION FROM THE INTERSECTION OF STATE HIGHWAY 113 AND YOLO COUNTY ROAD 29, GO EAST ON ROAD 29 FOR 0.8 MI (1.3 KM) TO A SIDE ROAD RIGHT, ROAD 101A. TURN RIGHT AND GO SOUTHEAST ON ROAD 101A FOR ABOUT 0.3 MI (0.5 KM) TO THE STATION ON THE RIGHT.	
THE STATION IS A 2 IN ALUMINUM DISK SET IN THE TOP OF THE SOUTH END OF A CONCRETE HEADWALL ON THE WEST SIDE OF ROAD 101A, THE NORTH EXTENSION OF F STREET IN DAVIS. IT IS 47 FT (14.3 M) WEST OF THE CENTERLINE OF THE ROAD, 3.5 FT (1.1 M) NORTHEAST OF A 5 IN STEEL CABLE GATE POST AND 0.8 FT (0.2 M) NORTH OF THE SOUTH END OF THE HEADWALL.	
ELEVATION = 48.1	
DATUM: NAVD 88	

BY

APP'D

REV

DATE

DESCRIPTION

BID SET

DJUSD

DAVIS JOINT UNITED SCHOOLS DISTRICT

DJUSD JOB NO. PN 16-28

CIVIL ENGINEER

REGISTERED

NO. 41804

BRYAN P. BONING

DATE 05-15-2017 P.E. 41804

TITLE SHEET

PHASE 1 - PARKING LOT IMPROVEMENT PLANS

EMERSON JUNIOR HIGH SCHOOL

CITY OF DAVIS

YOLO COUNTY, CALIFORNIA