

CONTRACTOR INSTALLED", AND "OWNER FURNISHED/OWNER INSTALLED"  
REGULATORY REQUIREMENTS INDICATED WITHIN THESE DOCUMENTS  
NATIONAL PRIOR TO FINAL APPROVAL OF THIS PROJECT.

NOT PART OF THIS PROJECT APPROVAL. SEPARATE APPLICATION AND  
THESE ITEMS.

INTENDED AS NEW AND TO BE PROVIDED AS PART OF THIS PROJECT.

TY DURING CONSTRUCTION AND DEMOLITION.

SAFETY, FIRE & LIFE SAFETY AND ACCESS COMPLIANCE SHALL BE  
OR USE.

## CODES & REQUIREMENTS

TO THE REQUIREMENTS OF THE FOLLOWING CODES, WITH THE LATEST

MARSHAL REGULATIONS

STANDARDS ADMINISTRATIVE CODE (EFFECTIVE JULY 1, 2014)

BUILDING CODE, VOL. 1 & 2 (CBC) (2012 IBC, AS AMENDED BY CA)

ELECTRICAL CODE (CEC) (2011 NEC, AS AMENDED BY CA)

MECHANICAL CODE (CMC) (2012 IAPMO UMC, AS AMENDED BY CA)

PLUMBING CODE (CPC) (2012 IAPMO UPC, AS AMENDED BY CA)

ENERGY CODE (EFFECTIVE JULY 1, 2014)

FIRE CODE (CFC) (2012 IFC, AS AMENDED BY CA)

LANDING CODE

GREEN BUILDING STANDARDS CODE, CALGREEN CODE

2014)

REFERENCED STANDARDS (PARTIAL LIST - CBC CH. 35 AND CFC CH. 45)

FIRE SERVICE MAIN AND THEIR APPURTENANCES

(CA AMENDED), SEE UL STD 1971 FOR "VISUAL DEVICES"

PTED BY THE STATE OF CALIFORNIA, SEE CBC CHAPTER 35 AND CFC

AND 2 SHALL BE KEPT ON SITE DURING CONSTRUCTION PERIOD.

SPECIFICATIONS IS THAT THE WORK IS TO BE BUILT IN ACCORDANCE  
REGULATIONS (CCR). SHOULD ANY EXISTING CONDITIONS SUCH AS  
CONSTRUCTION BE UNCOVERED, WHICH IS NOT COVERED BY THE  
THE FINISHED WORK WILL NOT BE IN COMPLIANCE WITH THE CCR, THE  
CONTACT THE ARCHITECT OF SUCH CONDITIONS. A CHANGE ORDER OR A  
D/OR SPECIFICATIONS, DETAILING AND SPECIFYING THE REQUIRED  
APPROVED BY DSA, BEFORE PROCEEDING WITH THE WORK.

SSIBILITY OR FIRE AND LIFE-SAFETY PORTIONS OF THE APPROVED  
THE WORK HAS BEEN LET SHALL BE MADE BY A CONSTRUCTION CHANGE  
4-338, PART 1, CAC, AND SHALL BE SUBMITTED TO AND APPROVED BY  
WORK. CONSTRUCTION CHANGE DOCUMENTS SHALL BE PREPARED AND  
WITH DSA INTERPRETATION OF IR A-6.

ON SHALL BE PER CCR, TITLE 24;

PROFESSIONAL ENGINEERS AS PER SECTIONS 4-333(A), 4-341, AND 4-344  
R SECTION 4-343

PROVED BY DSA, HIRED BY THE OWNER, SHALL PROVIDE CONTINUOUS  
UTIES AS DEFINED PER SECTION 4-333(B), AND 4-342

R SECTIONS 4-336, AND 4-343(C)

ET OF CONSTRUCTION AS PER SECTION 4-331. SUPERVISIONS OF  
N ACCORDANCE WITH SECTION 4-334

LABORATORY SHALL BE IN ACCORDANCE WITH SECTION 4-335. THE  
LABORATORY, COSTS FOR REQUIRED RE-TESTING SHALL BE  
. ALL TESTS SHALL CONFORM TO THE REQUIREMENTS OF THE  
SHEET. REQUIRED SPECIAL INSPECTIONS SHALL COMPLY WITH SECTION

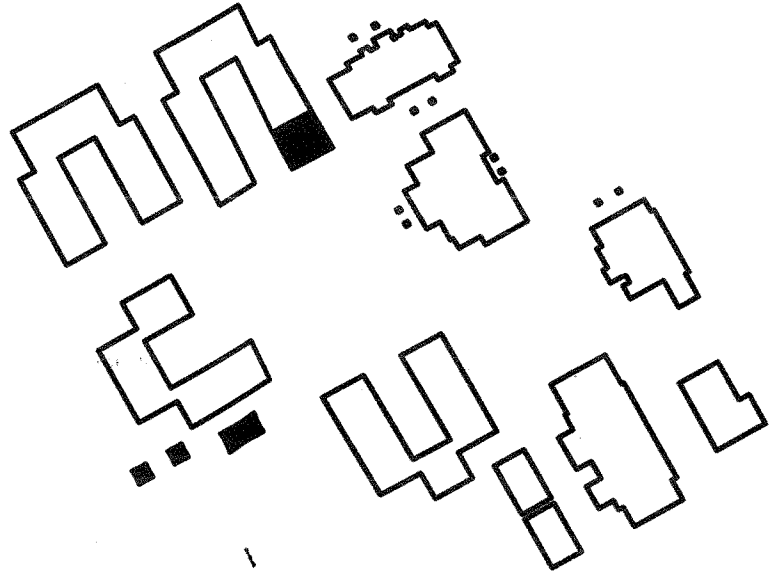
SS REQUIREMENTS, AND ENVIRONMENTAL HEALTH CONSIDERATIONS  
CES AND AUTHORITIES HAVING JURISDICTION.

RABLE FROM THE INSIDE WITHOUT THE USE OF KEY, OR SPECIAL  
LT, NO SLIDING BOLTS, ETC., PER CBC SECTION 1008.1.9

BUILDING THE FIRE ALARM SYSTEM SHALL BE TESTED AND ACCEPTED BY  
ITY.

C

Key Plan



Agency Approval

FILE NO. 57-11

IDENTIFICATION STAMP  
DIV. OF THE STATE ARCHITECT  
OFFICE OF REGULATION SERVICES

APPL. 02-115087

AC MT FLS JR SS JR  
DATE 4-28-16

B

Project Title:

MONTGOMERY  
ELEMENTARY SCHOOL  
PORTABLE CLASSROOM BLDG &  
SHADE STRUCTURES



DJUSD

DAVIS JOINT UNIFIED  
SCHOOL DISTRICT

1441 DANBURY STREET  
DAVIS, CA. 95618  
(916) 643.7400

No.	Description	Date	No.	Description	Date

Drawing Title:

TITLE SHEET

A

Architect's Seal



Designed:  
RC

Project No.  
3447014.000

Drawn:  
RC

Scale:  
AS NOTED

QAQC:  
--

Drawing No.

Date:  
4-27-2016

G0.1

