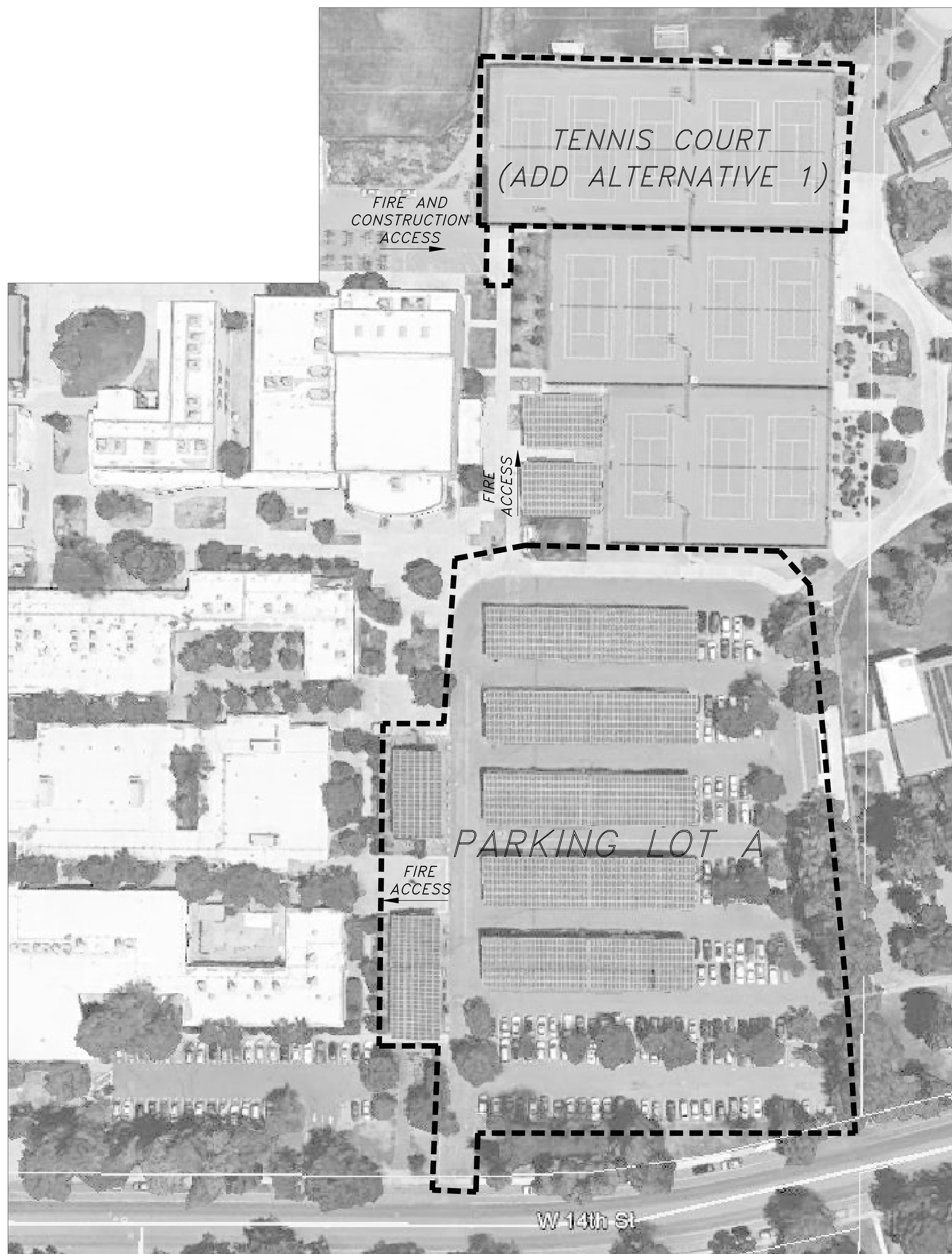


VICINITY MAP

The map illustrates the project site (hatched rectangle) located at the intersection of W 14th St and E 11th St. The site is situated between the Davis School High School and the Parkside Apartments. Surrounding areas include Senga Nueva, Covell Park, and West Manor. Major roads like W Covell Blvd, W 14th St, and E 11th St are labeled. A north arrow is in the bottom right corner.

YOLO COUNTY, CA



PROPOSED	EXISTING	
		STORM DRAIN AND MANHOLE
		SANITARY SEWER AND MANHOLE
		SANITARY SEWER FORCE MAIN
		SEWER PUMP STATION
		FIRE HYDRANT AND VALVE ASSEMBLY
		WATER MAIN, VALVE, & BLOWOFF VALVE
		JOINT UTILITY TRENCH
		GAS MAIN
		ELECTRICAL LINE } UG=UNDERGROUND OH=OVERHEAD
		TELEPHONE LINE
		STREET LIGHT CONDUIT, WIRING & PULL BOX
		STREET LIGHT SERVICE POINT AT UTILITY CO. BOX
		STREET LIGHT AND POLE
		UTILITY POLE WITH DOWN GUY & ANCHOR
		POWER POLE, TELEPHONE POLE, JOINT POLE
		FENCE
		VERTICAL CURB, GUTTER & SIDEWALK WITH DRIVEWAY
		CATCH BASIN OR DRAINAGE INLET
		FLOWLINE OF DITCH OR SWALE
		DIRECTION OF SURFACE DRAINAGE FLOW
		CUT OR FILL SLOPE
		RIGHT OF WAY OR PROPERTY LINE
		STREET CENTERLINE OR BASELINE
		SURVEY MONUMENT
		SIGN
		TREE
		TREE TO BE REMOVED
		EXISTING GROUND SURFACE ELEVATION
		EDGE OF PAVEMENT AND ELEVATION
		FLOW LINE GRADE
		TOP OF CURB GRADE/ASPHALT GRADE
		FINISHED CONCRETE GRADE
		MATCH EXISTING GRADE (FIELD VERIFY)
		PUBLIC UTILITY EASEMENT
		ROLL CURB, GUTTER, & SIDEWALK

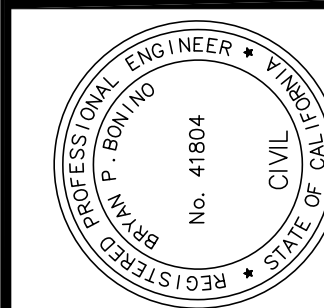
NO.	TITLE
1	TITLE SHEET
2	ABBREVIATIONS AND GENERAL NOTES
3	TOPOGRAPHIC SURVEY & DEMOLITION PLAN
4	TOPOGRAPHIC SURVEY & DEMOLITION PLAN
5	CIVIL SITE PLAN
6	CIVIL SITE PLAN
7	GRADING DRAINAGE AND UTILITY PLAN
8	GRADING DRAINAGE AND UTILITY PLAN
9	GRADING DRAINAGE AND UTILITY PLAN
10	SIGNING & STRIPING PLAN
11	EROSION & SEDIMENTATION CONTROL PLAN
12	EROSION & SEDIMENTATION CONTROL PLAN
13	DETAILS
14	CALTRANS STANDARD PLANS

PARKING LOT:	"PAVEMENT TESTING & ANALYSIS REPORT", JOB NO. 15132, DATED OCTOBER 2, 2015, BY ASSOCIATED ENGINEERING CONSULTANTS, INC., 20179 CHARLENE DRIVE, REDDING, CA 96002, PHONE: (530) 226-1616
TENNIS COURTS:	"PAVEMENT DESIGN RECOMMENDATIONS FOR DAVIS HIGH SCHOOL TENNIS COURTS", JOB NO. 4900.03, DATED NOVEMBER 20, 2003, BY WALLACE KUHIL & ASSOCIATES, INC., 3050 INDUSTRIAL BOULEVARD, WEST SACRAMENTO, CA 95691, PHONE: (916) 372-1434


DESIGNATION - RWF1
PID - DK4487
DESCRIPTION:
THE STATION IS LOCATED ABOUT 2.5 MI (4.0 KM) NORTH OF DAVIS AND IS SET IN THE HEADWALL OF A DRAINAGE CANAL.
TO REACH THE STATION FROM THE INTERSECTION OF STATE HIGHWAY 113 AND YOLO COUNTY ROAD 29, GO EAST ON ROAD 29 FOR 0.8 MI (1.3 KM) TO A SIDE ROAD RIGHT, ROAD 101A. TURN RIGHT AND GO SOUTHEAST ON ROAD 101A FOR ABOUT 0.3 MI (0.5 KM) TO THE STATION ON THE RIGHT.
THE STATION IS A 2 IN ALUMINUM DISK SET IN THE TOP OF THE SOUTH END OF A CONCRETE HEADWALL ON THE WEST SIDE OF ROAD 101A, THE NORTH EXTENSION OF F STREET IN DAVIS. IT IS 47 FT (14.3 M) WEST OF THE CENTERLINE OF THE ROAD, 3.5 FT (1.1 M) NORTHEAST OF 5 IN STEEL CABLE GATE POST AND 0.8 FT (0.2 M) NORTH OF THE SOUTH END OF THE HEADWALL.
ELEVATION = 48.1
DATUM: NAVD 88

TITLE 19 COR, PUBLIC SAFETY, STATE FIRE MARSHAL REGULATIONS
TITLE 24 COR, PART 1 ~ 2013 BUILDING STANDARDS ADMINISTRATIVE CODE
TITLE 24 COR, PART 2 ~ 2013 CALIFORNIA BUILDING CODE, VOL. 1 & 2 (CBC) CA AMENDED
TITLE 24 COR, PART 3 ~ 2013 CALIFORNIA ELECTRICAL CODE (CEC) CA AMENDED
TITLE 24 COR, PART 4 ~ 2013 CALIFORNIA MECHANICAL CODE (CMC) CA AMENDED
TITLE 24 COR, PART 5 ~ 2013 CALIFORNIA PLUMBING CODE (CPC) CA AMENDED
TITLE 24 COR, PART 6 ~ 2013 CALIFORNIA ENERGY CODE
TITLE 24 COR, PART 9 ~ 2013 CALIFORNIA FIRE CODE (CFC) CA AMENDED
TITLE 24 COR, PART 12 ~ 2013 CALIFORNIA REFERENCED STANDARDS

PARTIAL LIST -- SEE CBC CH. 35 AND CFC CH. 45
2013 NFPA 13, INSTALLATION OF SPRINKLER SYSTEMS (CA AMENDED)
2013 NFPA 14, INSTALLATION OF STANDBY AND HOSE SYSTEMS
2013 NFPA 17, DRY CHEMICAL EXTINGUISHING SYSTEMS
2013 NFPA 17A, WET CHEMICAL EXTINGUISHING SYSTEMS
2013 NFPA 20, INSTALLATION OF STATIONARY PUMPS FOR FIRE PROTECTION
2013 NFPA 22, WATER TANKS FOR PRIVATE FIRE PROTECTION
2013 NFPA 24, INSTALLATION OF PRIVATE FIRE SERVICE MAINS
2013 NFPA 25, INSPECTION, TESTING, MAINTENANCE OF WATER-BASED FIRE PROTECTION SYSTEMS (CA AMENDED)
2013 NFPA 72, NATIONAL FIRE ALARM CODE (CA AMENDED); SEE UL STD 1971 FOR "VISUAL DEVICES"
2012 ICC 300, BLEACHERS, FOLDING AND TELESCOPE SEATING, AND GRANDSTANDS (ICC/ANSI 300-2002

[illegible]

CLM LAUGENOUR AND MEIKLE
CIVIL ENGINEERING • LAND SURVEYING • PLANNING
108 COURT STREET, WOODLAND, CALIFORNIA 95695 • PHONE: (330) 862-1755
P.O. BOX 828, WOODLAND, CALIFORNIA 95776 • FAX: (330) 862-4602

BY:  _____
BRYAN P. BONINO

DATE 02-18-16 P.E. #1804

TITLE SHEET
PARKING LOT IMPROVEMENT PLANS
DAVIS SENIOR HIGH SCHOOL
YOLO COUNTY, CALIFORNIA

CITY OF DAVIS	
JOB NO.	1019-2
DESIGNED	PF
DRAWN	MP
FILE	
CHECKED	BPB
DATE	02-18-16
SCALE	1"=40'
SHEET	
1	
OF	
14	

X: \Land Projects\1019-2\dwg\1019-2_C01.dwg