

APPLICATION FOR APPROVAL OF CONSTRUCTION CHANGE DOCUMENT – CCD CATEGORY A

CCD Category A is for construction changes to or affecting Structural Safety, Fire & Life Safety or Accessibility.

This form shall be completed by the Design Professional in General Responsible Charge of the project, in accordance with California Code of Regulations, Title 24, Part 1, Section 4-338 (c) and in compliance with DSA IR A-6.

School District/Owner: Davis Joint Unified School District	DSA File #: 57 - 11
Project Name/School: Cesar Chavez Elementary School	DSA App. #: 02 - 114122

APPLICANT		
CCD #: 005	Date Submitted: 9-22-2015	Attached Pages?: <input type="checkbox"/> No <input checked="" type="checkbox"/> Yes (5 pages)
Firm Name: HMC Architects	Contact Name: Raija Clar	
Email: raija.clar@hmcarchitects.com	Phone Number: (916) 325-1100	
Address: 2495 Natomas Park Drive, Studio 655		
City: Sacramento	State: CA	Zip: 95833
<input type="checkbox"/> A DSA 301-N, DSA 301-P, or 90-Day Letter has been issued for this project.		

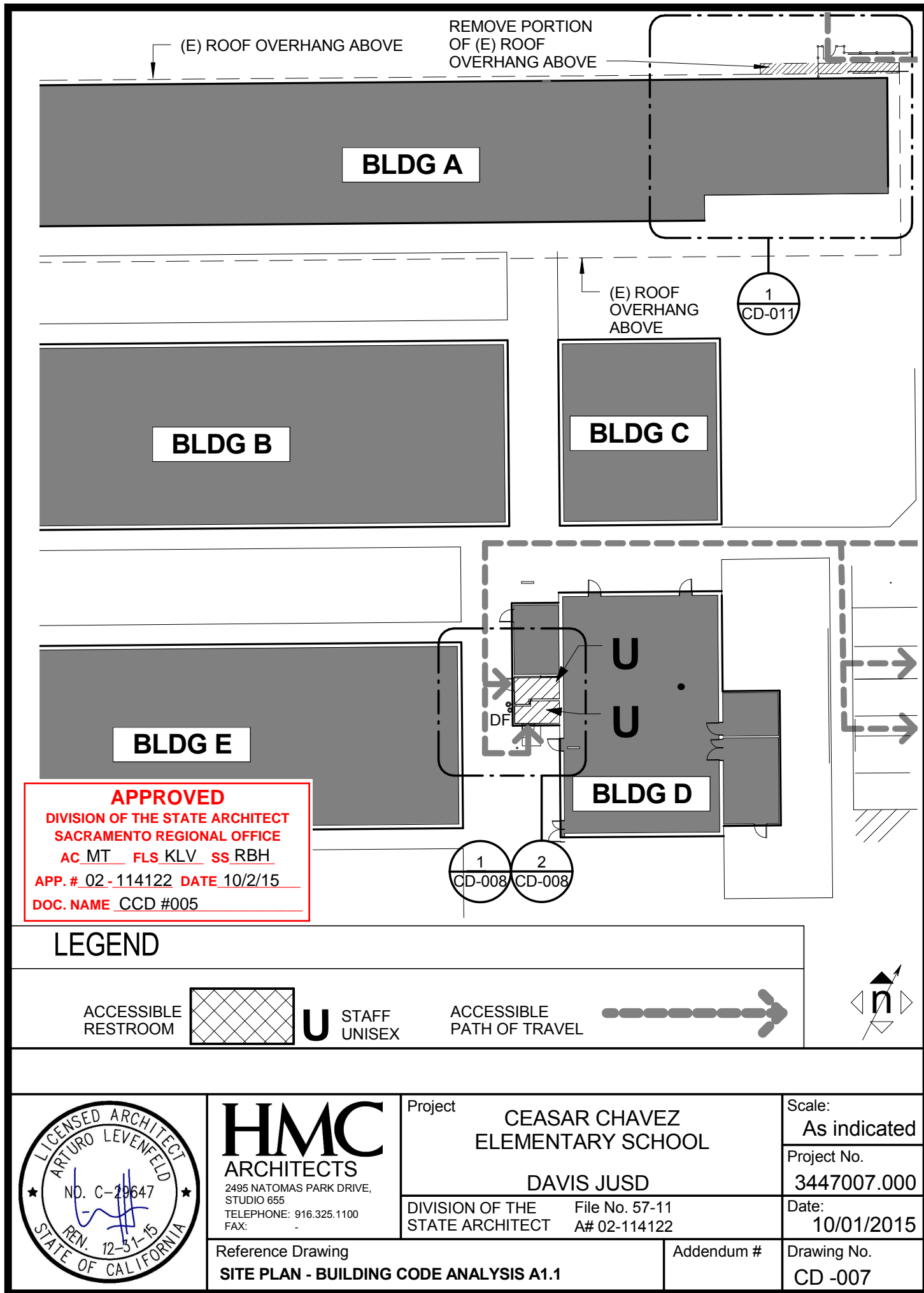
DESIGN PROFESSIONAL IN GENERAL RESPONSIBLE CHARGE	
Name of Design Professional in General Responsible Charge: Arturo Levenfeld	
Professional License #: C-29647	Discipline: Architect of Record

Design Professional in General Responsible Charge Statement: The attached Construction Change Documents have been examined by me for design intent and appear to meet the appropriate requirements of Title 24, California Code of Regulations and the project specifications. They are acceptable for incorporation into the construction of the project.

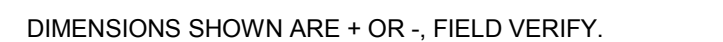
Signature: _____
DESIGN PROFESSIONAL IN GENERAL RESPONSIBLE CHARGE

CHECK THIS BOX: <input type="checkbox"/> To confirm that all CCD drawings and calculations have been stamped and signed by the Responsible Design Professional.
Brief description of construction change (attach additional sheets if needed): Per field trip note CS-01 by Lucinda Johnson existing toilet rooms to be revised to be accessible and existing roof eave to be revised to allow accessible path of travel.
List of DSA approved drawings affected by this CCD: A1.1

DSA USE ONLY (for paper submittal only) SSS _____ Date _____ Approved/Disapproved/Not Req'd FLS _____ Date _____ Approved/Disapproved/Not Req'd ACS _____ Date _____ Approved/Disapproved/Not Req'd Remarks: _____ _____ _____	For business office use only Date Sent _____ Return By _____ Delivery Method _____	DSA Approval Stamp <div style="border: 2px solid red; padding: 5px; text-align: center;"> APPROVED DIVISION OF THE STATE ARCHITECT SACRAMENTO REGIONAL OFFICE AC MT FLS KLV SS RBH APP. # 02 - 114122 DATE 10/2/15 DOC. NAME CCD #005 </div>
--	---	---

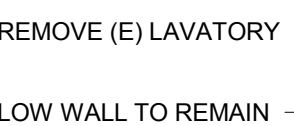



$$1/4" = 1'-0"$$

$$1/4'' = 1'-0''$$

$$1/4'' = 1'-0''$$

$$1'' = 1'-0''$$

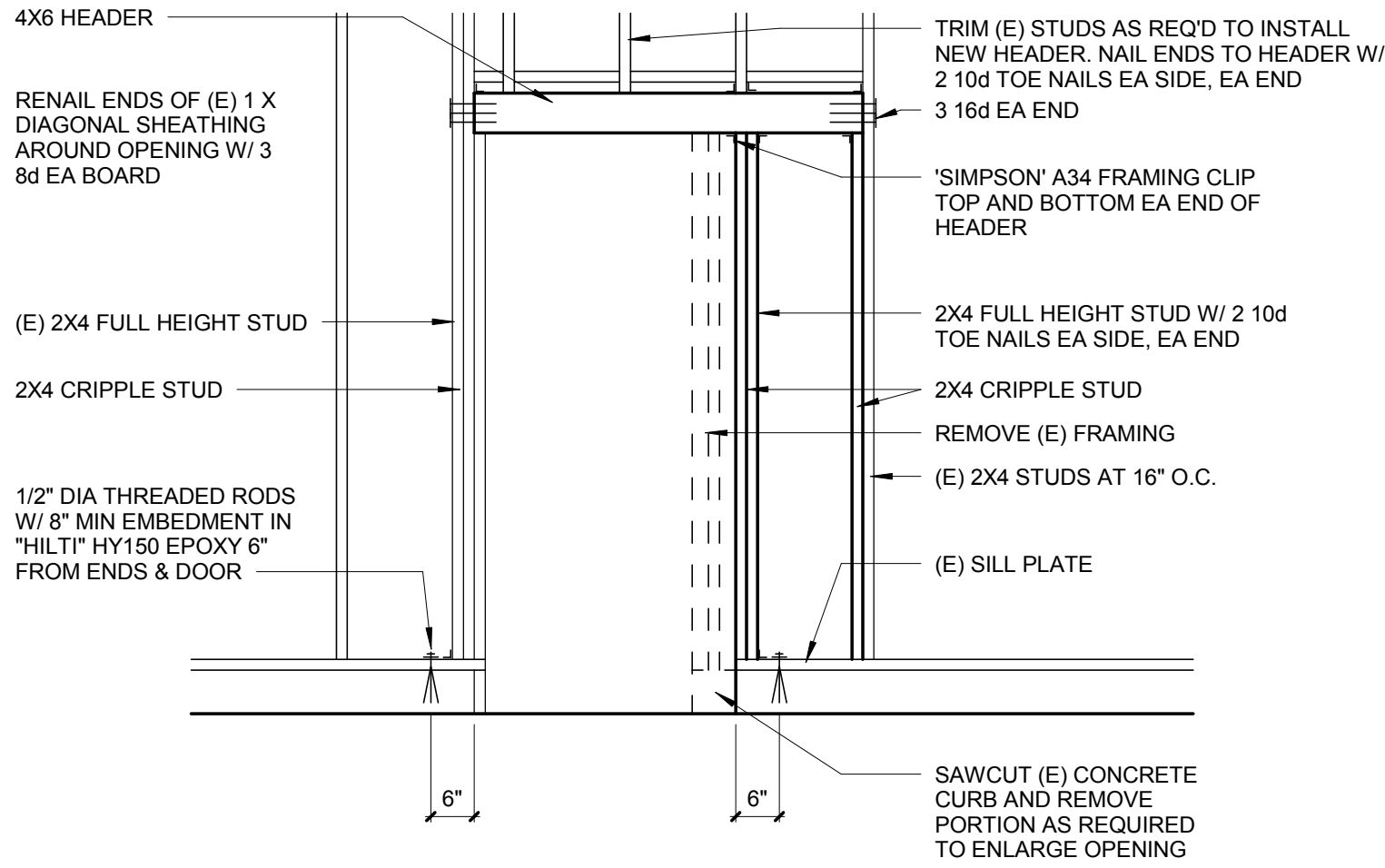
$$3'' = 1'-0''$$

$$1/4'' = 1'-0''$$

$$1/2'' = 1'-0''$$

$$1/2'' = 1'-0''$$


1/4" = 1'-0"


$$1/4'' = 1'-0''$$



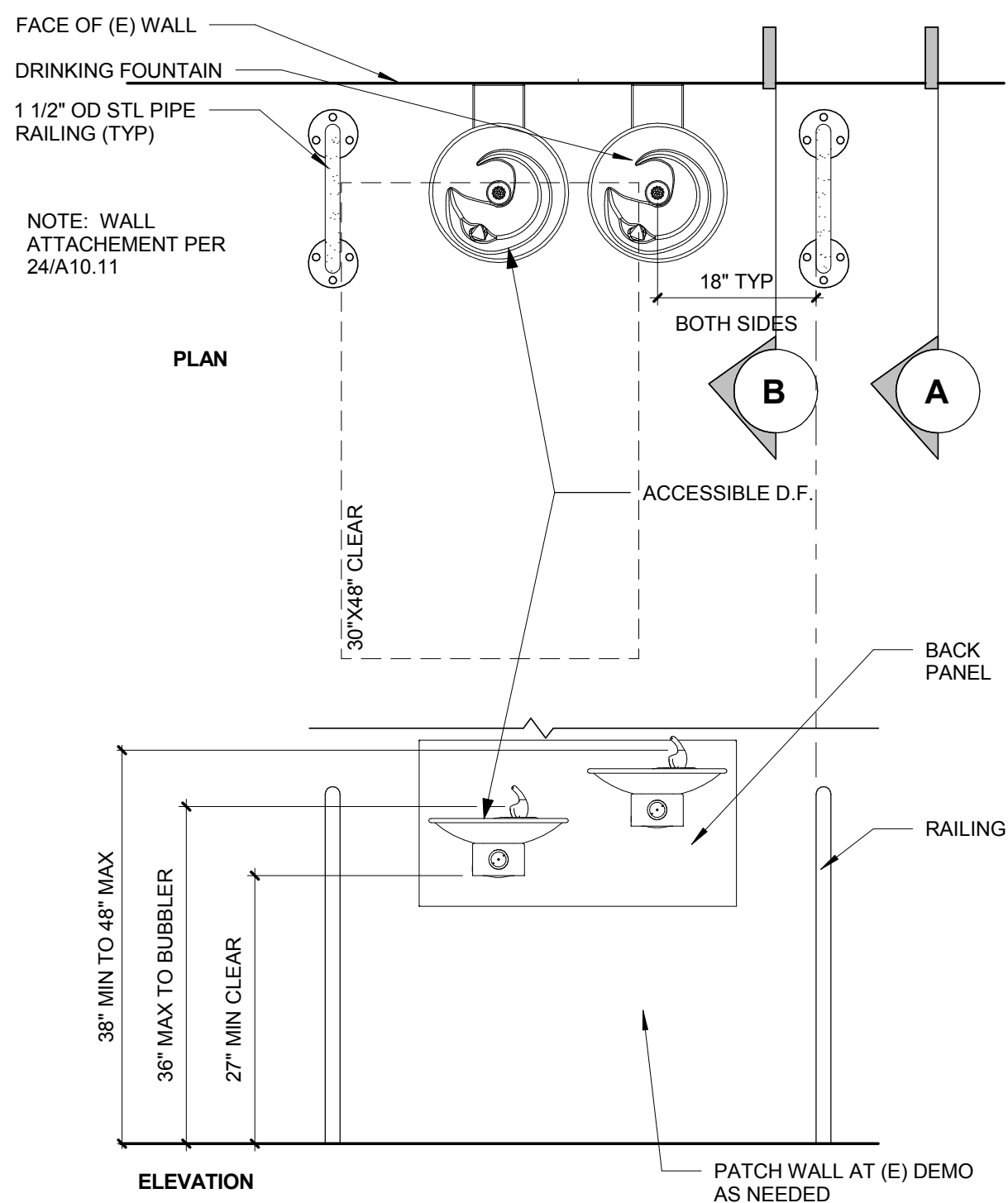
TOILET ACCESSORIES		
ITEM	MANUFACTURER	ITEM #
SEMI-RECESSED TOILET PAPER DISPENSER	BOBRICK	B-3888
GRAB BAR	BOBRICK	B-6806
MIRROR (FRAMED) 18" X 36"	BOBRICK	B-165

OPENING 6

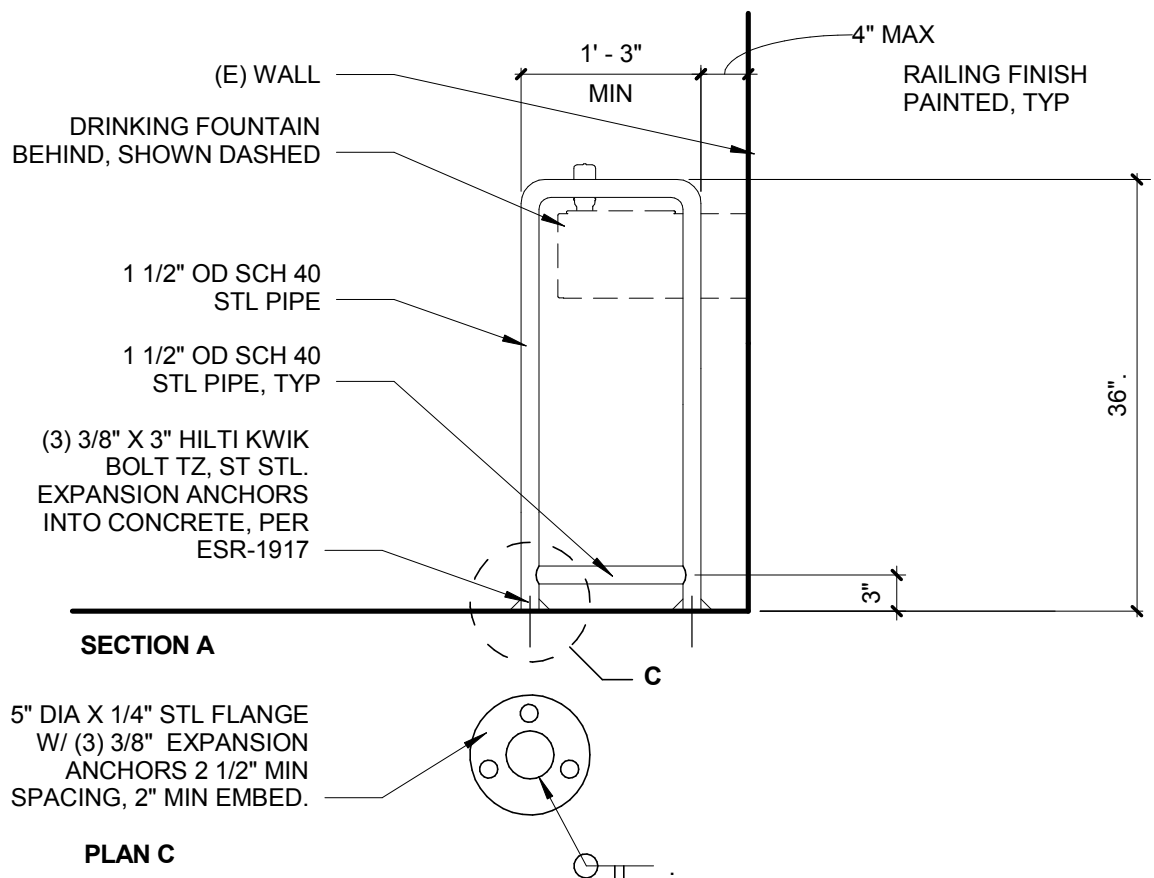
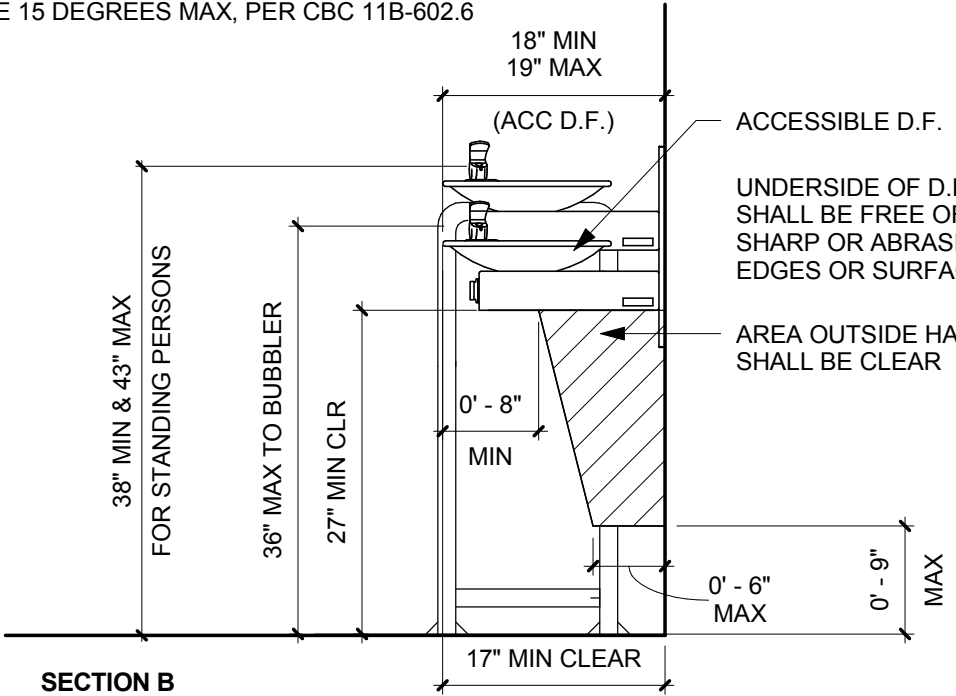
1/2" = 1'-0"

TOILET ACCESSORIES

4



WATER FLOW: THE SPOUT SHALL PROVIDE A FLOW OF WATER 4" HIGH MIN AND SHALL BE LOCATED 5" MAX FROM FRONT OF UNIT. THE ANGLES OF WATER STREAM SHALL BE MEASURED HORIZONTALLY RELATIVE TO FRONT FACE OF UNIT. WHERE SPOUTS ARE LOCATED LESS THAN 3" OF FRONT OF UNIT, THE ANGLE OF WATER STREAM SHALL BE 30 DEGREES MAX, WHERE SPOUTS ARE LOCATED BETWEEN 3" & 5" MAX FROM FRONT OF UNIT, THE ANGLE OF WATER STREAM SHALL BE 15 DEGREES MAX, PER CBC 11B-602.6



DRINKING FOUNTAIN

5

3/4" = 1'-0"

FINISH LEGEND

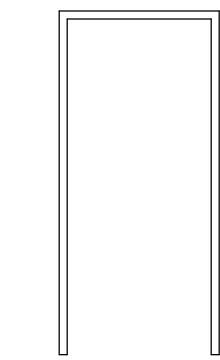
(E) EXISTING
GB GYPSUM WALL BOARD
(N) NEW
P PAINT - SEMI-GLOSS
TZ TERRAZZO

ROOM FINISH SCHEDULE											
ROOM NUMBER	ROOM NAME	FLOOR MATERIAL	FLOOR COLOR	BASE MATERIAL	BASE COLOR	WALL MATERIAL / COLOR				CEILING MATERIAL	CEILING COLOR
						NORTH	EAST	SOUTH	WEST		
D102	UNISEX TOILET	(E) & (N) TZ	TZ1	(E) & (N) TZ	TZ1	(E) GB / P1	(E) GB / P1	(E) & (N) GB / P1	(E) & (N) GB / P1	(E) GB	P2
D103	UNISEX TOILET	(E) & (N) TZ	TZ1	(E) & (N) TZ	TZ1	(E) & (N) GB	(E) GB / P1	(E) & (N) GB / P1	(E) GB / P1	(E) GB	P2

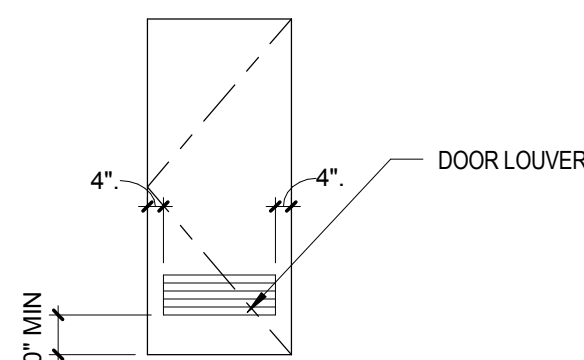
ROOM FINISH SCHEDULE

3

1/4" = 1'-0"



1
HOLLOW METAL FRAME, PAINTED



A
HOLLOW METAL DOOR, PAINTED

DOOR FRAMES & PANELS

2

1/4" = 1'-0"

DOOR SCHEDULE								
DOOR NUMBER	DOOR SIZE	DOOR TYPE	FRAME TYPE	FIRE RATING	HARDWARE GROUP	HEAD DETAIL	JAMB DETAIL	THRESHOLD DETAIL
D102	3'-0" X 6'-8"	A	1	NONE	1	7/CD-009	7/CD-009, SIM	1/A842, SIM
D103	3'-0" X 6'-8"	A	1	NONE	1	7/CD-009	7/CD-009, SIM	1/A842, SIM

DOOR HARDWARE GROUP NO.1

QTY	DESCRIPTION	CATALOG NUMBER	FINISH	MANUFACTURER
1 EA	CONT. HINGE	224HD	628	IVES
1 EA	FACULTY RESTROOM LOCK	ND85PD RHO	626	IVES SCHLAGE
1 EA	LOCK GUARD	LG13	630	IVES
1 EA	SURFACE CLOSER	4040XP EDA	689	LCN
1 EA	KICK PLATE	8400 10" X 2" LDW	630	IVES
1 EA	FLOOR STOP	FS444	626	IVES
1 EA	HEAD SEAL	700SA @ HEAD	628	NGP
1 SET	JAMB SEAL	162SA @ JAMBS	628	NGP
1 EA	DOOR SWEEP	200 NA	CL	NGP
1	THRESHOLD	PER DETAIL		

HM FRAME DOOR HEAD

7

JAMS, SIM

3" = 1'-0"

DOOR SCHEDULE

1

projectfrog

Owner/Products & System Design:

Project FROG, Inc.

501 Second Street, Suite 120
San Francisco, CA 94107
p 415 814 8500
f 415 814 8501
www.projectfrog.com

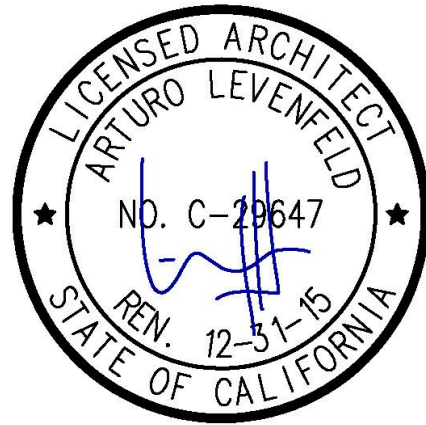
HMC Architects

2495 Natomas Park Drive,
Studio 655
Sacramento, CA 95833
p 916 325 1100
www.hmcarchitects.com

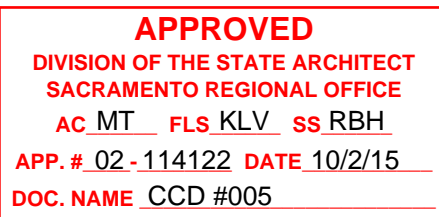
CEASAR CHAVEZ
ELEMENTARY
SCHOOL
DAVIS JUSD

Cesar
Chavez
Elementary
School

1221 Anderson Road
Davis, California 95616



FILE NO. 57-11



Rev.	Issue	Date
	DSA SUBMITTAL	02.02.15
	DSA BACKCHECK	05.13.15
	CCD-005	10.01.15

Scale:

As indicated

Drawing Description:
BLDG D

Building Typology:

D

Sheet Number:

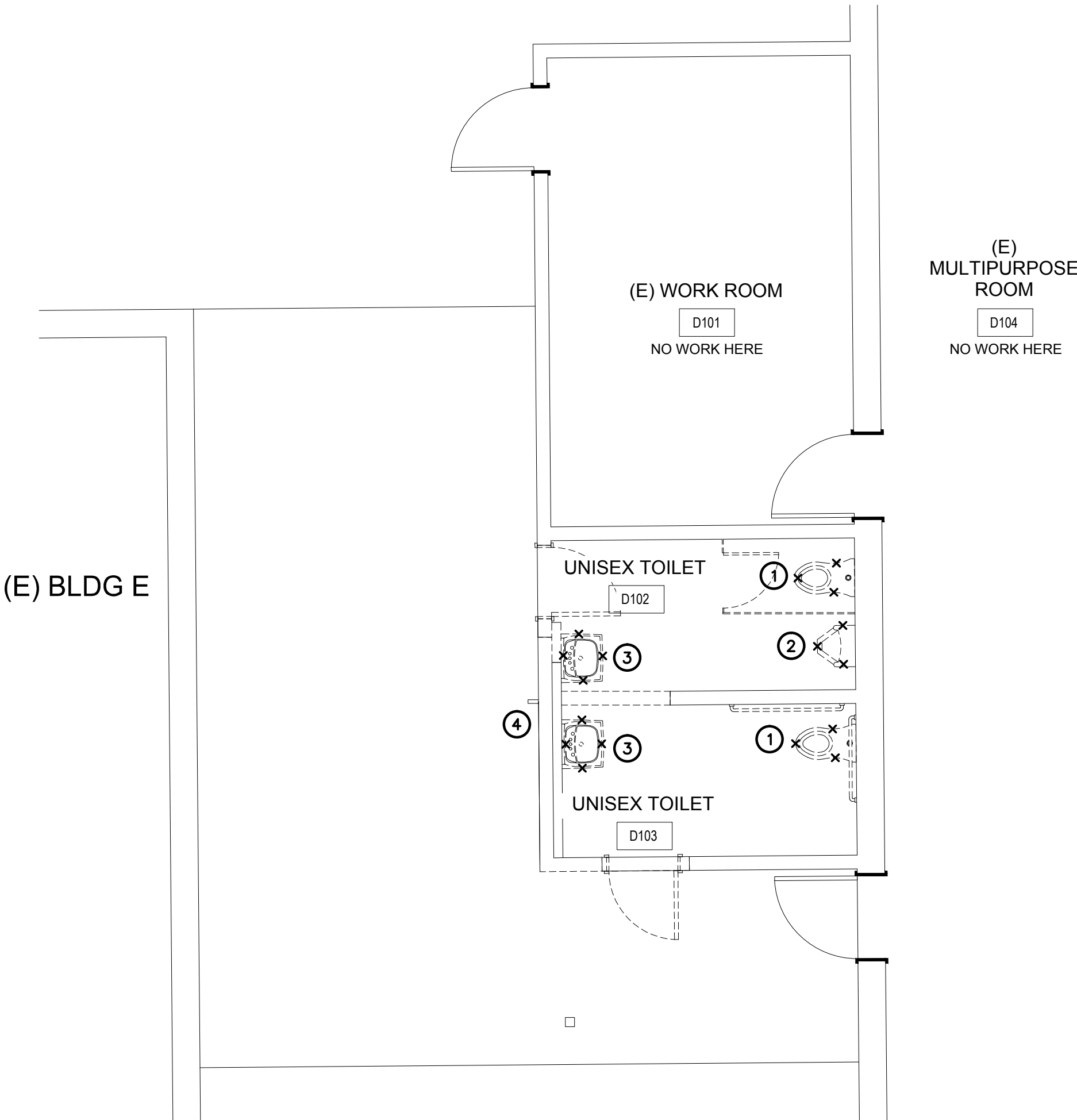
CD-009

QC
INI %

PLUMBING FIXTURE SPECIFICATION & CONNECTION SCHEDULE													
ADA	SYMBOL	FIXTURE	FIXTURE MANUFACTURER AND MODEL No.	FAUCET OR VALVE MANUFACTURER AND MODEL No.	TRIM MANUFACTURER AND MODEL No.	REMARKS	VENT	WASTE		COLD WATER		HOT WATER	
								BRANCH	OUTLET	BRANCH	OUTLET	BRANCH	OUTLET
		WC-1 WATER CLOSET FLOOR MOUNTED FLUSH VALVE ACCESSIBLE	"AMERICAN STANDARD" MADERA EL NO. 3461.128, 1.28 GPF FLOOR MOUNTED, ELONGATED, SIPHON JET ACTION 1-1/2" TOP SPUD, 16-1/2" RIM HEIGHT.	"SLOAN" ROYAL 111-1.28, CBC COMPLIANT, 1.28 GPF.	SEAT: "BEMIS" MODEL 10SSCT. SOLID BLACK PLASTIC WITH OPEN FRONT AND STAINLESS STEEL EXTERNAL CHECK HINGE, 1" THICK WITH BUMPER. CARRIER: "J.R. SMITH" 100 OR 200 SERIES	WHERE USED FOR CBC ACCESSIBLE WATER CLOSETS, THE FLUSH VALVE HANDLE SHALL BE MOUNTED ON THE WIDE SIDE OF THE WC ENCLOSURE.	2"	4"	4"	1 1/4"	1"	-	-
		L-1 LAVATORY WALL MOUNTED COLD WATER ONLY STD/ACCESSIBLE	"AMERICAN STANDARD" LUCERNE NO. 0355.012, WALL HUNG, VITREOUS CHINA WITH CONTOURED BACK AND SIDE SPLASH SHIELDS, FRONT OVERFLOW, CONCEALED ARM RECESS, 4" CENTERS, 20" x 18" D SHAPED BOWL.	"CHICAGO" 857-E12-665PSHABCP TAPERED HANDLE FAUCET, PUSH-BUTTON TYPE. MODEL E2805 VANDAL RESISTANT ECONO-FLO SPRAY OUTLET, 0.5 GPM FLOW RESTRICTOR. ADA COMPLIANT	"KOHLER" K-7726 GRID DRAIN, "KOHLER" K-7131-A TAILPIECE, McGUIRE 8902 P-TRAP, SPEEDWAY RIGID 3/8" RISER, "KOHLER" K-7608 ANGLE STOPS, J.R. SMITH 700-E CARRIER	MOUNT AT HEIGHT INDICATED ON ARCHITECTURAL DRAWINGS. PROVIDE CONCEALED ARMS AND FLOOR SUPPORT, WITH FEET OF SUPPORT SECURELY ANCHORED TO FLOOR. IN ADDITION ANCHOR TOP OF SUPPORT TO WALL CONSTRUCTION. INSULATE ALL EXPOSED WASTE PIPING AND WATER SUPPLIES PER SPECS., SEE SECTION 15440	1 1/2"	2"	1 1/2"	3/4"	1/2"	3/4"	1/2"
		DF-1 DRINKING FOUNTAIN WALL MOUNTED STD/ACCESSIBLE DUAL HEIGHT	"HAWS" 1011, STAINLESS STEEL DUAL HEIGHT, WALL MOUNTED STAINLESS STEEL BACK PANEL.	INTEGRAL	WITH P-TRAP	SURPORT SYSTEM: MODEL 6700.4 MOUNTING PLATE AND 6800 SUPPORT CARRIER. PROVIDE MANUFACTURER'S INTERNAL SUPPORT SYSTEM. WHERE INSTALLED ON CONCRETE OR CMU WALL, PROVIDE TWO MODEL 6700 MOUNTING PLATES AND INSTALL WITH ONE PLATE ON EACH SIDE OF WALL. SET AT HEIGHT INDICATED ON ARCH DRAWINGS.	1 1/2"	2"	1 1/2"	3/4"	1/2"	-	-

DEMO
SHEET NOTES

- 1 EXISTING WATER CLOSET TO BE REMOVED AND REPLACED WITH NEW. ADJUST EXISTING PIPING TO ACCOMMODATE NEW ROUGH-IN REQUIREMENTS OF REPLACEMENT WATER CLOSET.
- 2 EXISTING URINAL TO BE REMOVED. CAP UNUSED PIPING ABOVE, BELOW OR BEHIND ARCHITECTURAL FINISHES.
- 3 EXISTING LAVATORY TO BE REMOVED AND REPLACED WITH NEW. ADJUST EXISTING PIPING TO ACCOMMODATE NEW ROUGH-IN REQUIREMENTS OF REPLACEMENT LAVATORY.
- 4 EXISTING DRINKING FOUNTAIN TO BE REMOVED AND REPLACED WITH NEW. ADJUST EXISTING PIPING TO ACCOMMODATE NEW ROUGH-IN REQUIREMENTS OF REPLACEMENT DRINK FOUNTAIN. (E) DRINKING FOUNTAIN HAS ALREADY BEEN REMOVED, ONLY PIPING IS LEFT EXPOSED.



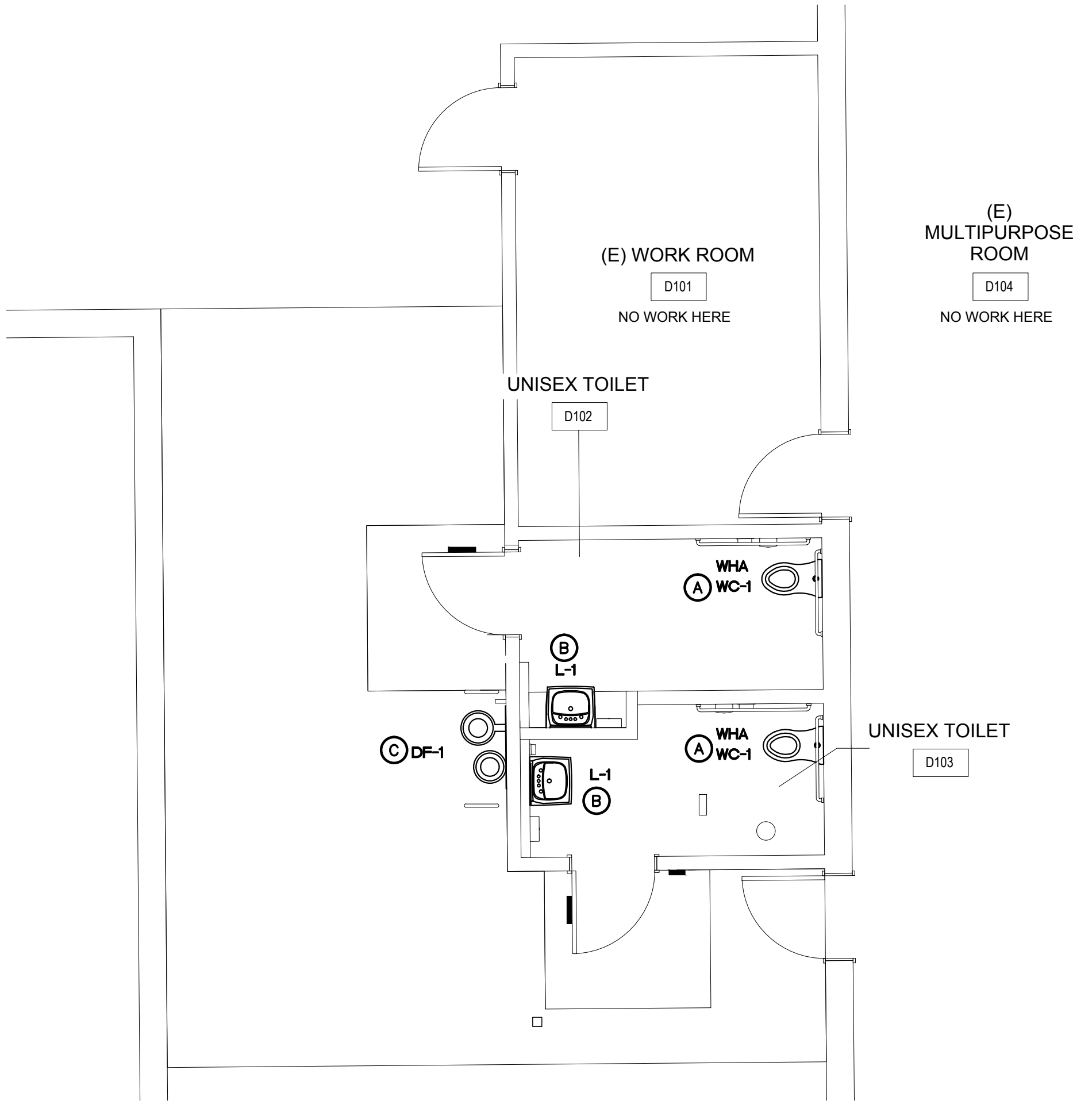
DEMOLITION PLUMBING FLOOR PLAN - BLDG D

1

1/4" = 1'-0"

NEW
SHEET NOTES

- A NEW WATER CLOSET TO BE CONNECTED TO EXISTING PIPING ADJUSTED TO NEW ROUGH-IN LOCATION.
- B NEW LAVATORY TO BE CONNECTED TO EXISTING PIPING ADJUSTED TO NEW ROUGH-IN LOCATION.
- C NEW DRINKING FOUNTAIN TO BE CONNECTED TO EXISTING PIPING ADJUSTED TO NEW ROUGH-IN LOCATION.



PLUMBING FLOOR PLAN - BLDG D

2

1/4" = 1'-0"



DATE SIGNED: 9/22/15

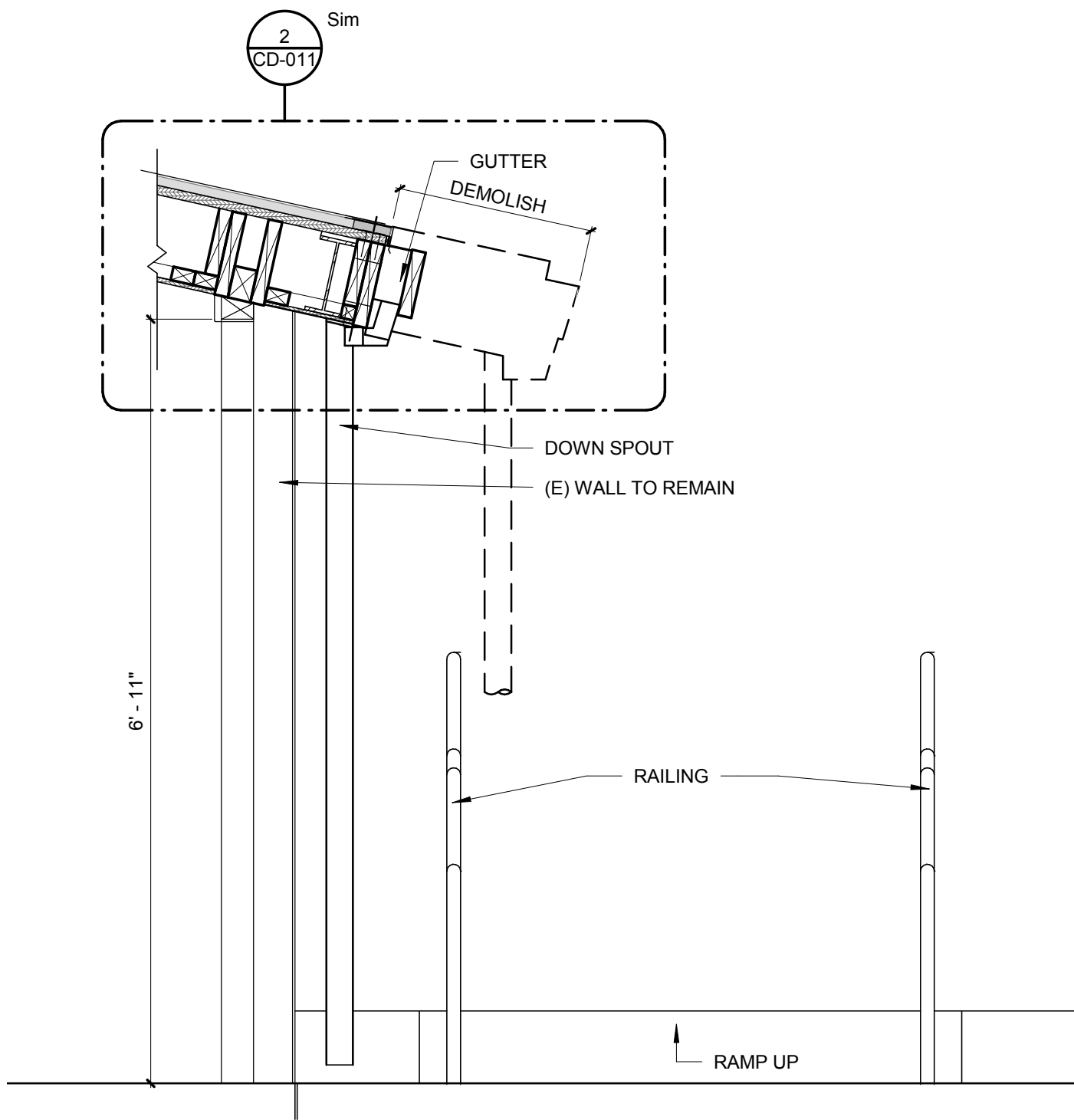
Rev.	Issue	Date
DSA	SUBMITTAL	02.02.15
DSA	BACKCHECK	05.13.15

Scale: AS NOTED

Drawing Description:
CD
PLUMBING FLOOR
PLANS

Building Typology:

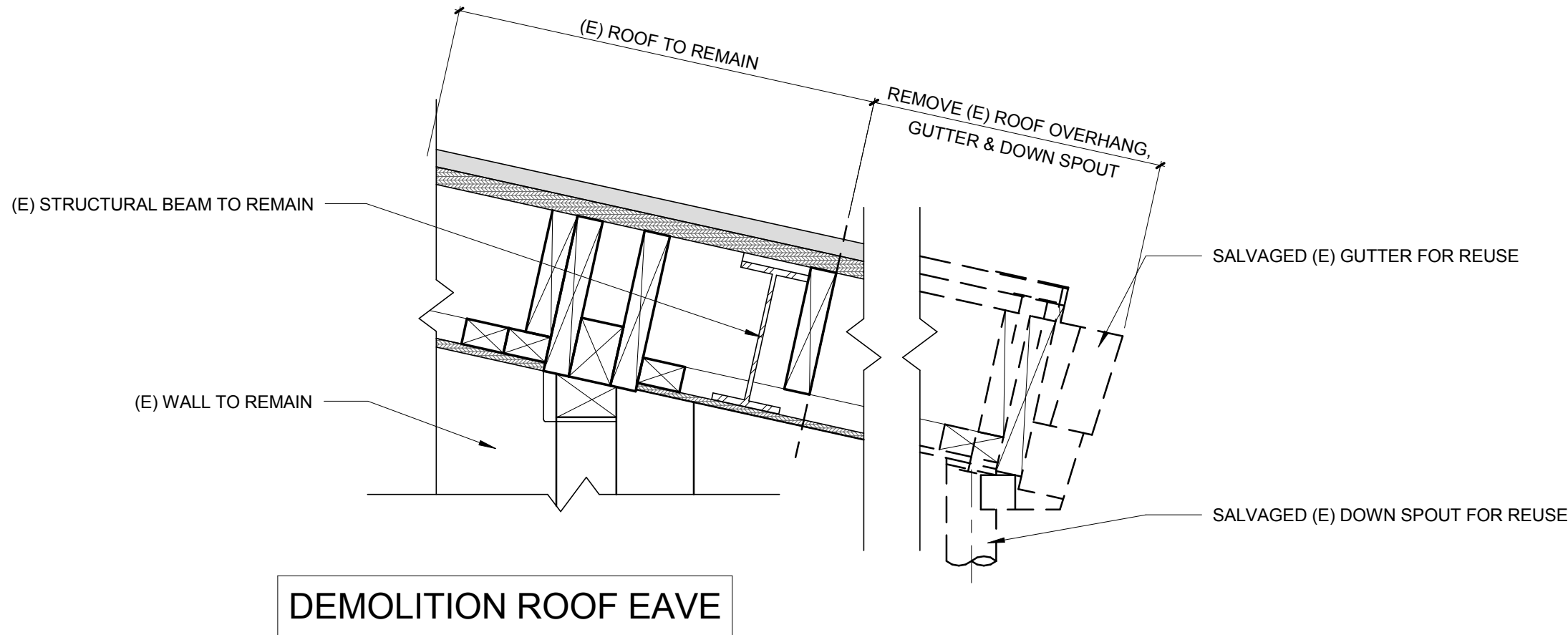
Sheet Number:



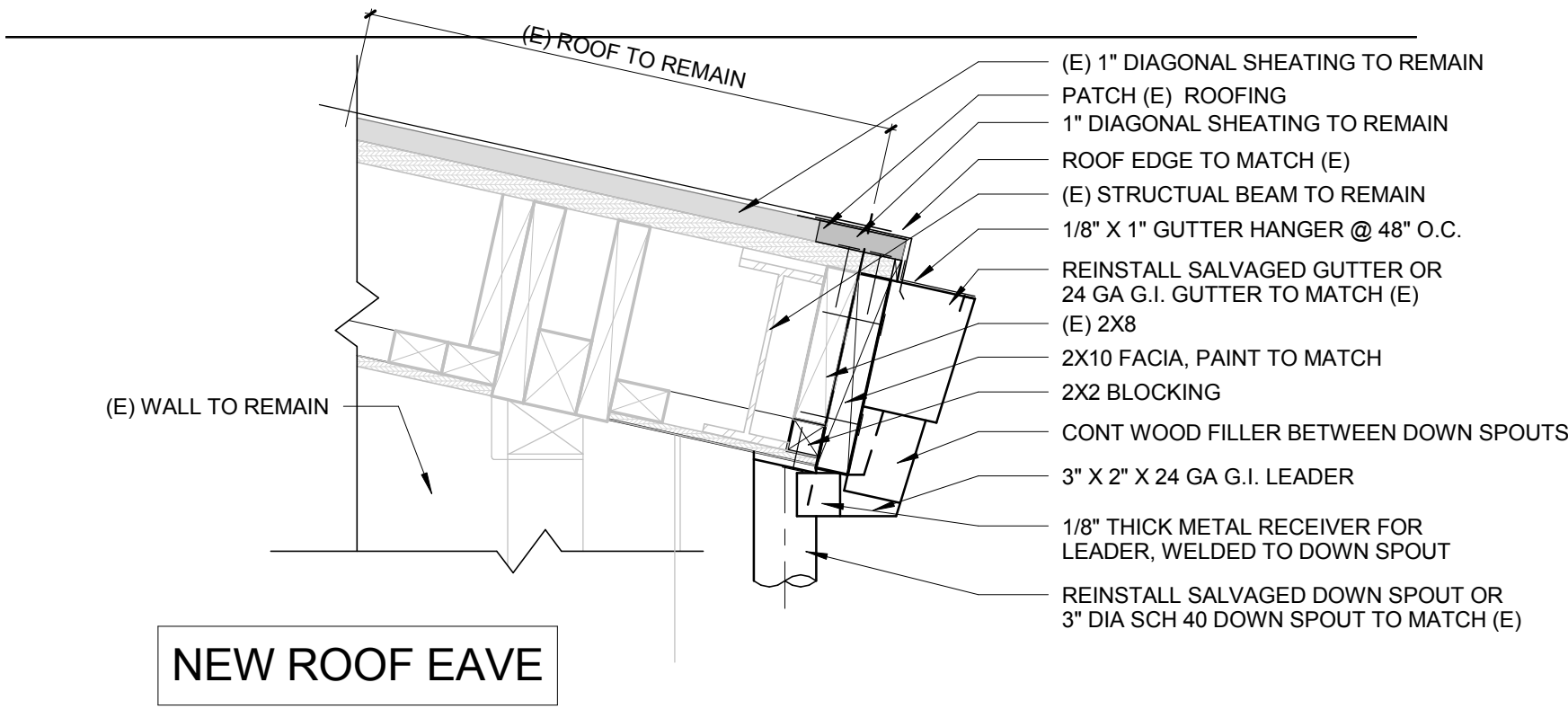
SECTION AT EAVE

3

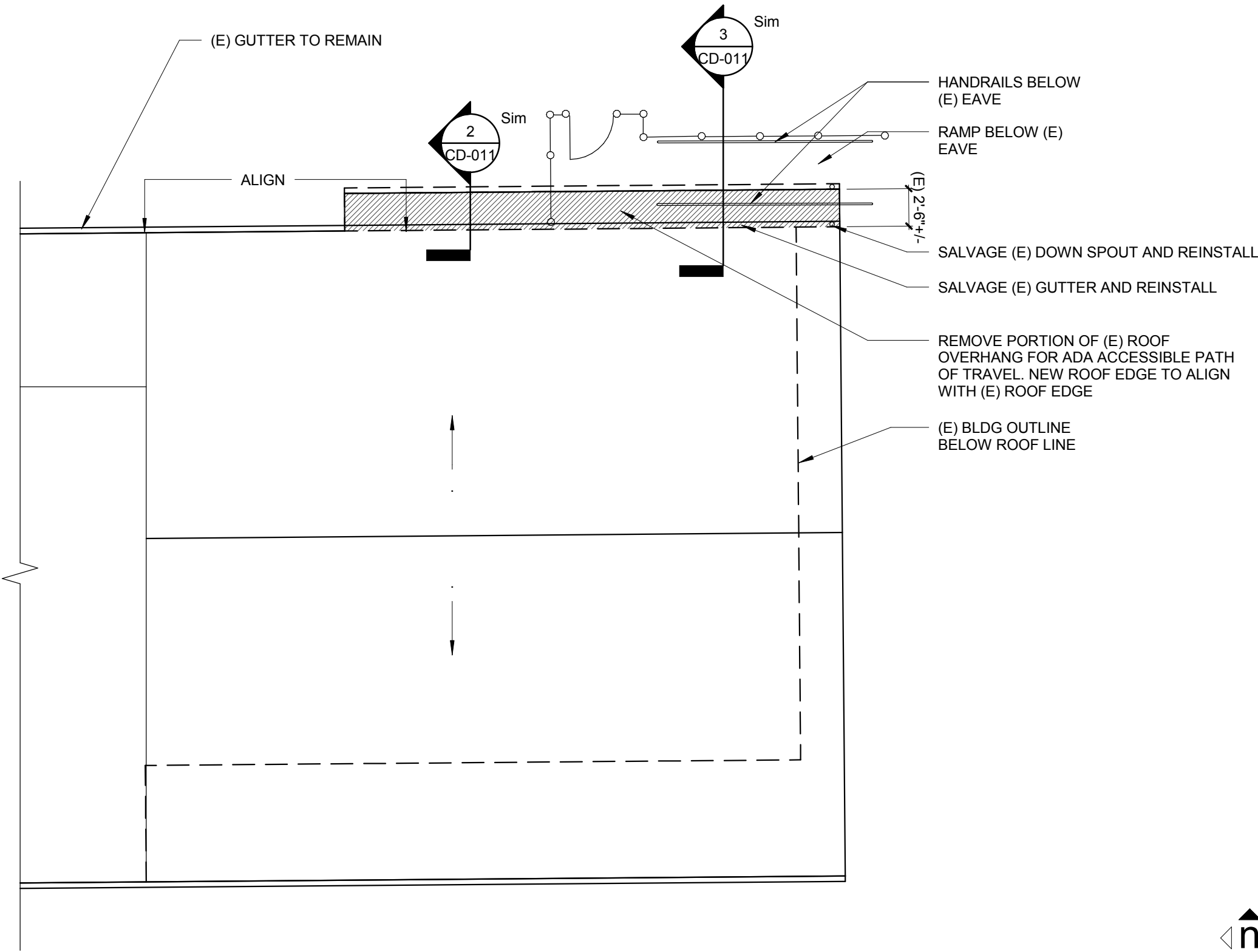
3/4" = 1'-0"



DEMOLITION ROOF EAVE



NEW ROOF EAVE



ROOF PLAN - (E) BLDG A

1

1/8" = 1'-0"

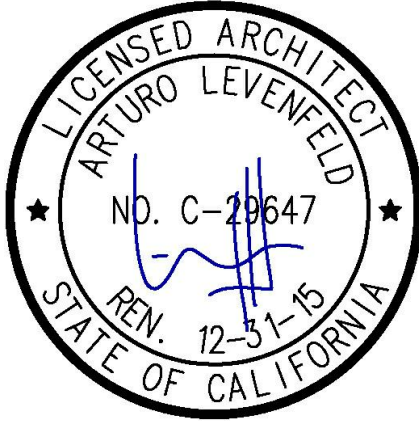
projectfrog
Owner/Products & System Design:
Project FROG, Inc.
501 Second Street, Suite 120
San Francisco, CA 94107
p 415 814 8500
f 415 814 8501
www.projectfrog.com

HMC Architects
2495 Natomas Park Drive,
Studio 655
Sacramento, CA 95833
p 916 325 1100
www.hmcarchitects.com

CEASAR CHAVEZ
ELEMENTARY
SCHOOL
DAVIS JUSD

Cesar
Chavez
Elementary
School

1221 Anderson Road
Davis, California 95616



FILE NO. 57-11
APPROVED
DIVISION OF THE STATE ARCHITECT
SACRAMENTO REGIONAL OFFICE
AC MT FLS KLV SS RBH
APP. # 02-114122 DATE 10/2/15
DOC. NAME CCD #005

Rev.	Issue	Date
DSA SUBMITTAL		02.02.15
DSA BACKCHECK		05.13.15
CCD-005		10.01.15

Scale:
As indicated

Drawing Description:
Unnamed

Building Typology:

A

Sheet Number:

CD-011