



School Climate Update

Kate Snow & Mel Lewis
Coordinators of School Climate
January 7, 2015



ASPECTS OF SCHOOL CLIMATE

DJUSD CLIMATE RESPONSE



ASPECTS OF HEALTHY SCHOOL CLIMATE



- Safety
- Relationships
- Teaching and Learning
- Organizational Environment

--National School Climate Center

SAFETY & RELATIONSHIPS



Safety

- Physical safety
- Risk factors
 - Alcohol and other drugs
 - Mental Health

Relationships

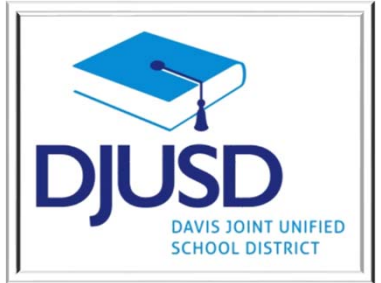
- Caring relationship with teacher or other adult
- High expectations from teacher or other adult
- School Connectedness Scale
 - By cohort
 - By ethnicity

CLIMATE SURVEY ADMINISTRATION



- **YouthTruth Survey**
- **California Healthy Kids Survey (CHKS)**

CHKS SPRING 2015 ADMINISTRATION



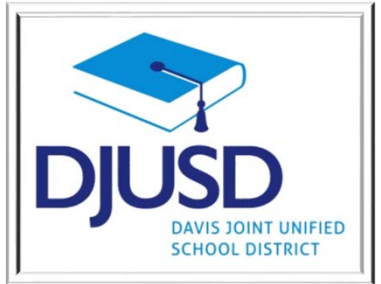
	Grade 5	Grade 7	Grade 9	Grade 11
Number of Students	617	680	718	677
Students Surveyed	295	599	600	497
Response Rate	48%	88%	84%	73%

SAFETY: PHYSICAL



INDICATORS OF SAFETY	Grade 5 %	Grade 7 %	Grade 9 %	Grade 11 %
Harassed based on race, ethnicity, gender, religion, sexual orientation, disability	*	26	26	22
Harassed for any other reason.	*	26	23	14
Been in Physical Fight	*	10	8	4
Carried weapon (other than a gun) in school past 12 months	*	3	3	4
Feels Safe or Very Safe at school	*	77	84	86

SAFETY: RISK FACTORS ALCOHOL AND OTHER DRUGS



INDICATORS OF DRUG USE	Grade 5 %	Grade 7 %	Grade 9 %	Grade 11 %
During your life, drank alcohol (glass)	2	14	28	51
During your life, been drunk/high on school property	*	4	9	21
During your life, been high from using drugs	*	6	15	32

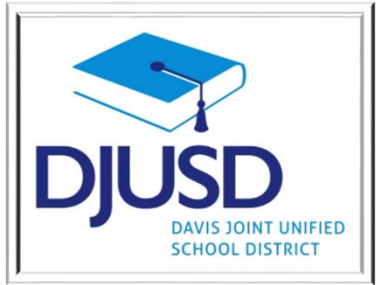
SAFETY: RISK FACTORS

MENTAL HEALTH



INDICATORS OF MENTAL HEALTH	Grade 5 %	Grade 7 %	Grade 9 %	Grade 11 %
Chronic sadness/ hopelessness	*	18	26	34
Considered suicide	*	*	15	21

SAFETY & RELATIONSHIPS



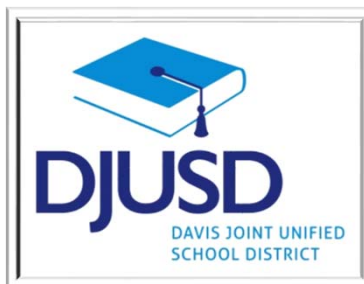
Safety

- Physical safety
- Risk factors
 - Alcohol and other drugs
 - Mental Health

Relationships

- Caring relationship with teacher or other adult
- High expectations from teacher or other adult
- School Connectedness Scale
 - By cohort
 - By ethnicity

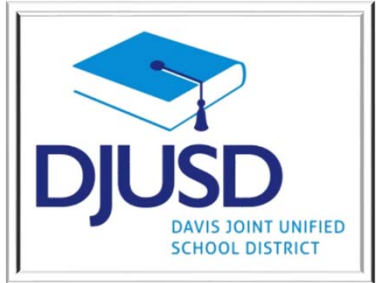
WHY CONNECTEDNESS?



“When adolescents feel cared for by people at their school and feel like a part of their school, they are less likely to use substances, engage in violence, or initiate sexual activity at an early age. Students who feel connected to school in this way also report higher levels of emotional well-being. In an analysis of risk and protective factors for eight different health risk outcomes among adolescents...school connectedness (was) the only school-related variable that was protective for every single outcome.”

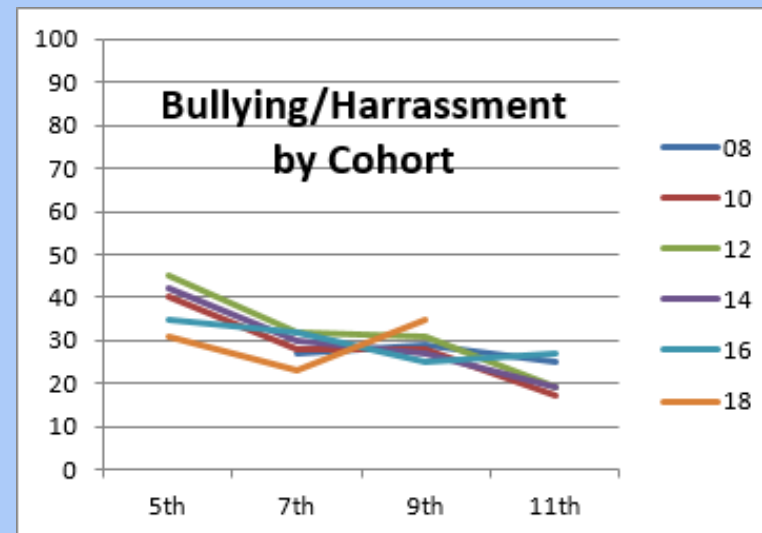
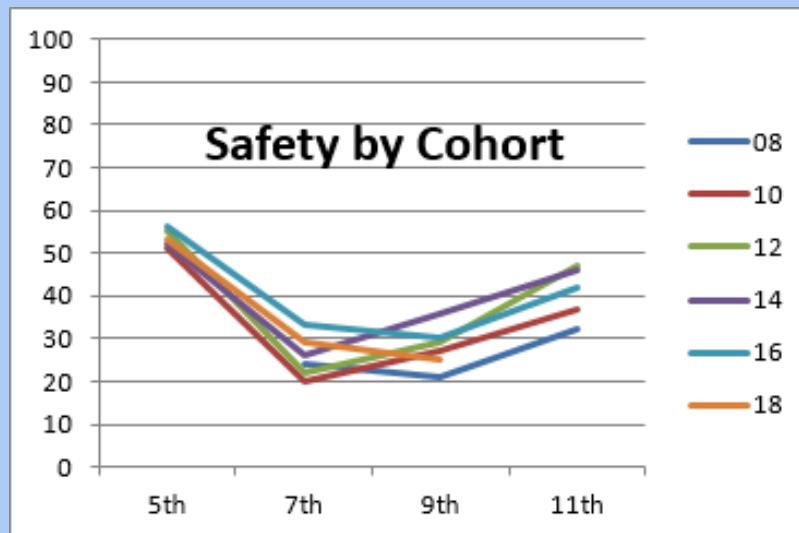
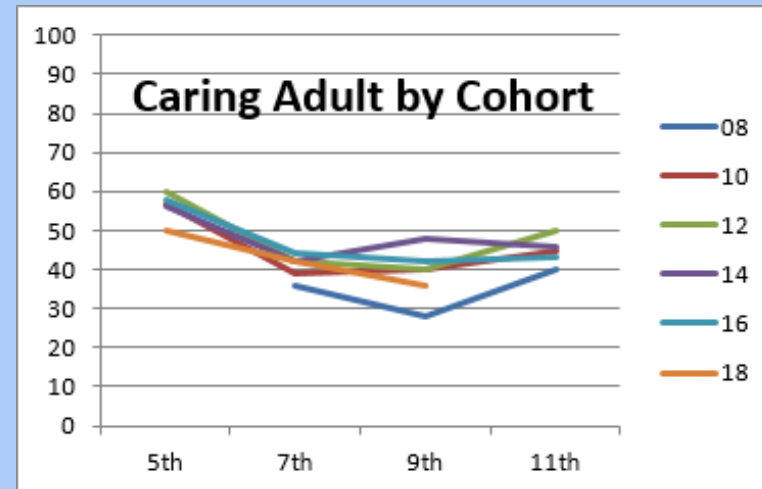
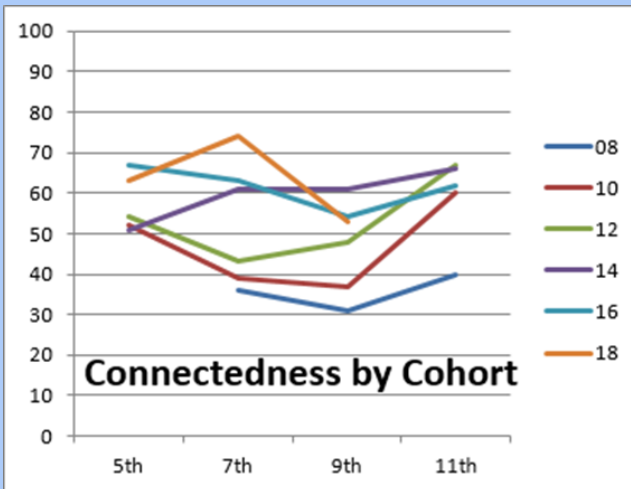
**Promoting School Connectedness:
Evidence from the National Longitudinal Study of Adolescent Health.
McNeely, CM, JM Nonnemaker, RW Blum. Journal of school health, 2002**

RELATIONSHIPS: CONNECTEDNESS



INDICATORS OF CONNECTEDNESS	Grade 5 %	Grade 7 %	Grade 9 %	Grade 11 %
Caring relationship with teacher or other adults	57	41	36	43
High expectations from teachers or other adults	63	57	47	51
Feel connected to school	67	69	53	62

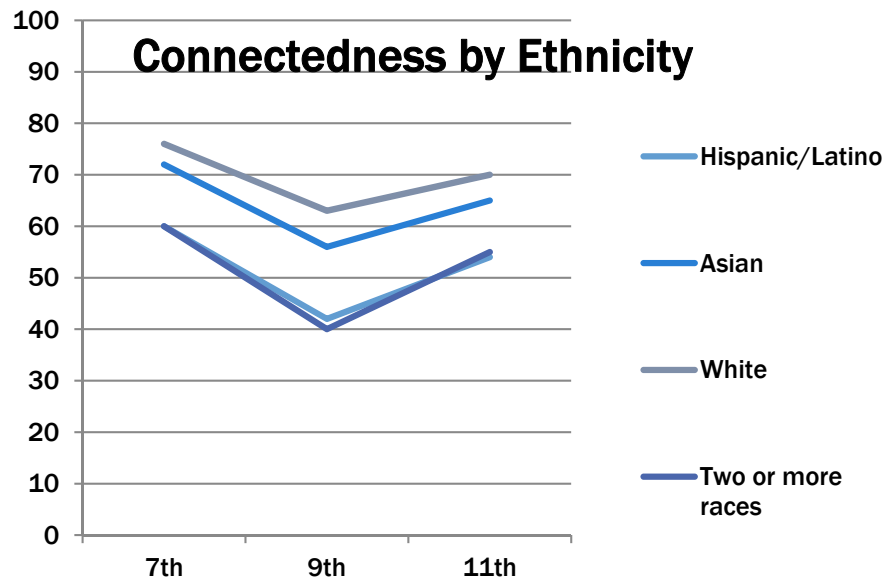
SAFETY AND RELATIONSHIPS BY COHORT



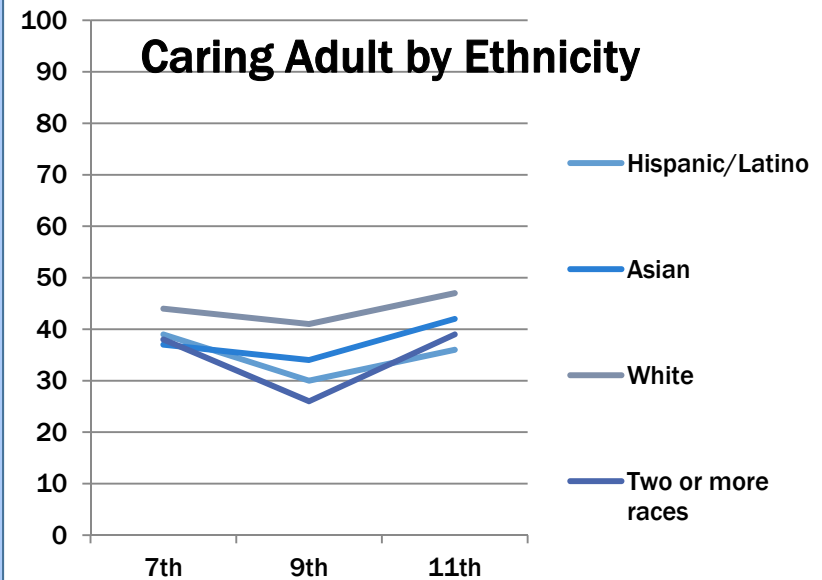
RELATIONSHIPS BY ETHNICITY 2015



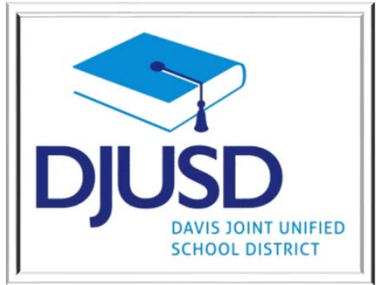
Connectedness by Ethnicity



Caring Adult by Ethnicity



OUR ONGOING QUESTIONS



- Have all our efforts improved climate?
- Has the culture of a site or the district changed for the better?
- If so, how?
- If not, why not?



DJUSD RESPONSE TO CLIMATE

**Students who are homeless and in foster care
Restorative Practices**

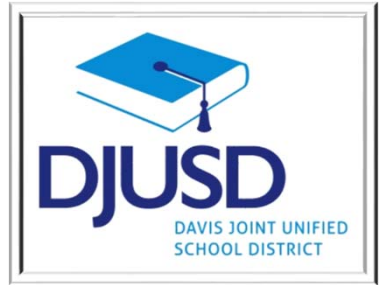


STUDENTS IN DJUSD WHO ARE HOMELESS



- 53 students enrolled since August 2015
- 40 students enrolled and currently homeless
- Services:
 - Certification for FRL program
 - Transportation
 - School supplies
- Additional:
 - School communication
 - Parent communication
 - Student support

STUDENTS IN DJUSD WHO ARE IN FOSTER CARE



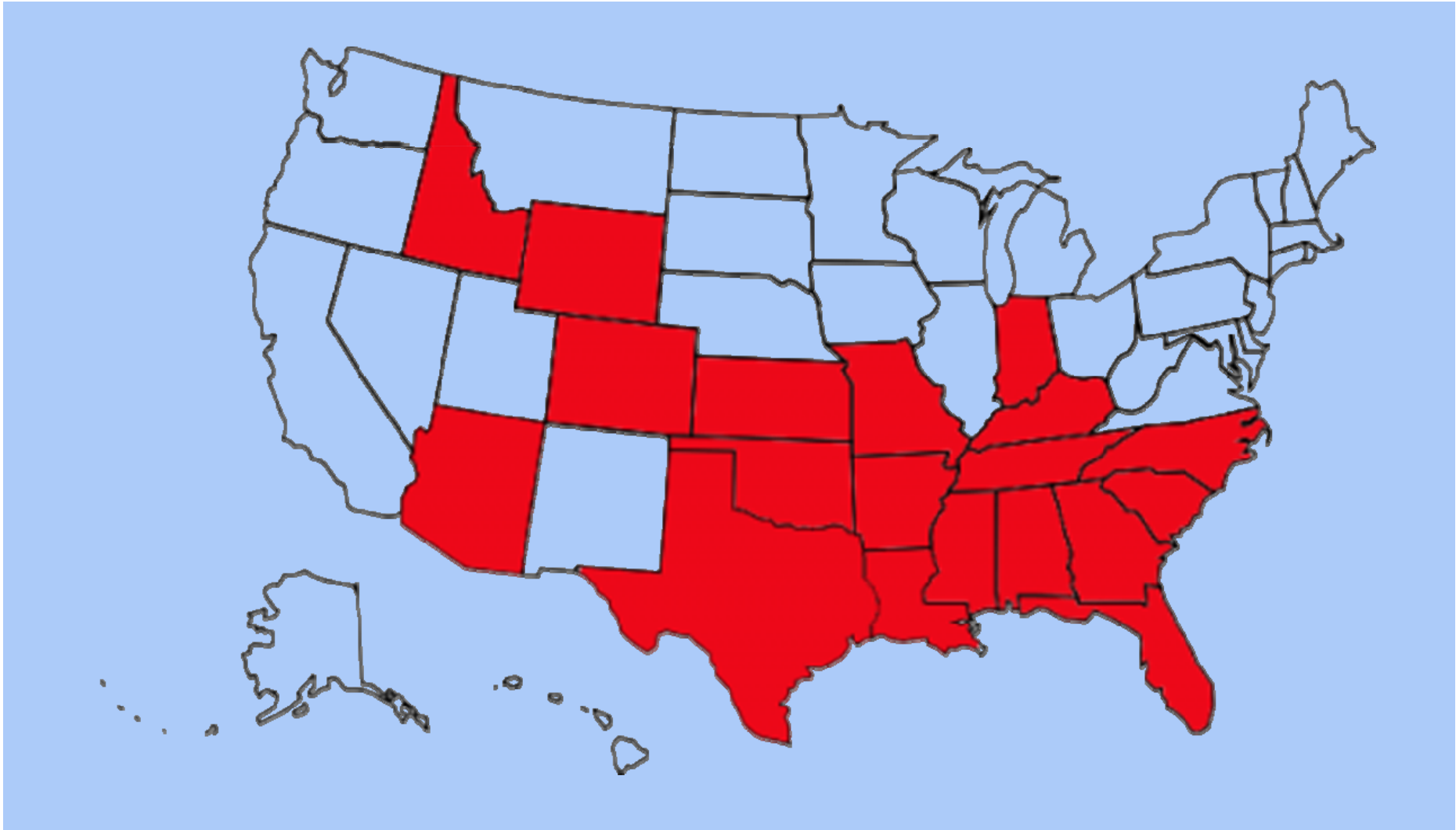
- 24 current students are in foster care
- 10 current students were formerly in foster care
- Services:
 - Certification for FRL program
 - Enrollment and transcript support
 - School supplies
 - College Financial Aid Certification
 - Other



RESTORATIVE PRACTICES



A SHIFT



THE RESTORATIVE PERSPECTIVE



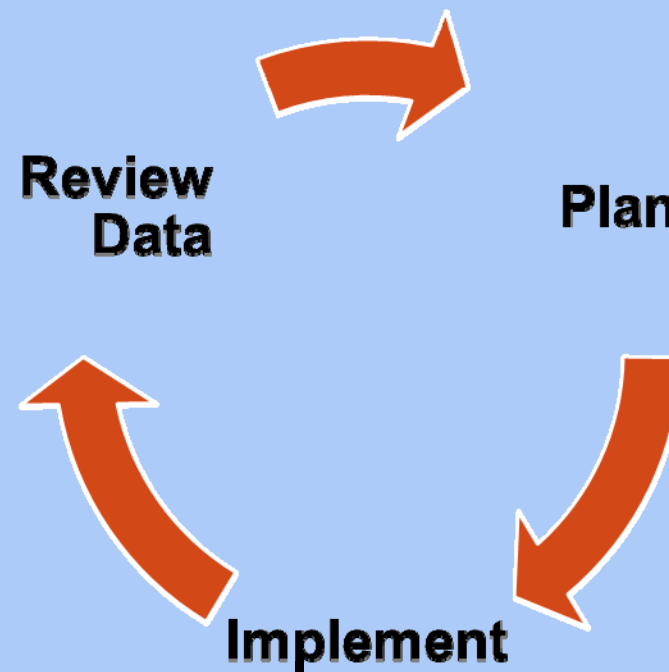
- We live in community.
- Every person matters.
- Relationships are central

RESTORATIVE PRACTICES IMPLEMENTATION UPDATE



- **How Many?**
 - 303 staff have received some training in RP
 - 53 have been to two or more
- **Who are they?**
 - 177 are certificated staff
 - 74 are classified staff
 - 51 are administrators
 - 17 students at Da Vinci trained in December

THE ONGOING PROCESS



Questions, Discussion

