

DAVIS SR. HIGH SCHOOL

ALL-STUDENT CENTER (MULTIPURPOSE BUILDING)

SCHEMATIC DESIGN PROGRAMMING UPDATE

January 7, 2016



RECENT PROCESS



- DHS Stakeholder Group Met to Finalize Project Needs
- HMC Architects – Developed Space Criteria Based on Needs
- HMC Architects – Prepared Constr. Estimate Based on Design Criteria & Assumptions
- Review of Design & Budget Constraints w/Stakeholder Team
- Refined Design Process Milestones
- Identification of Supplemental Project Funding Sources
- Project Approval & Bidding Phase

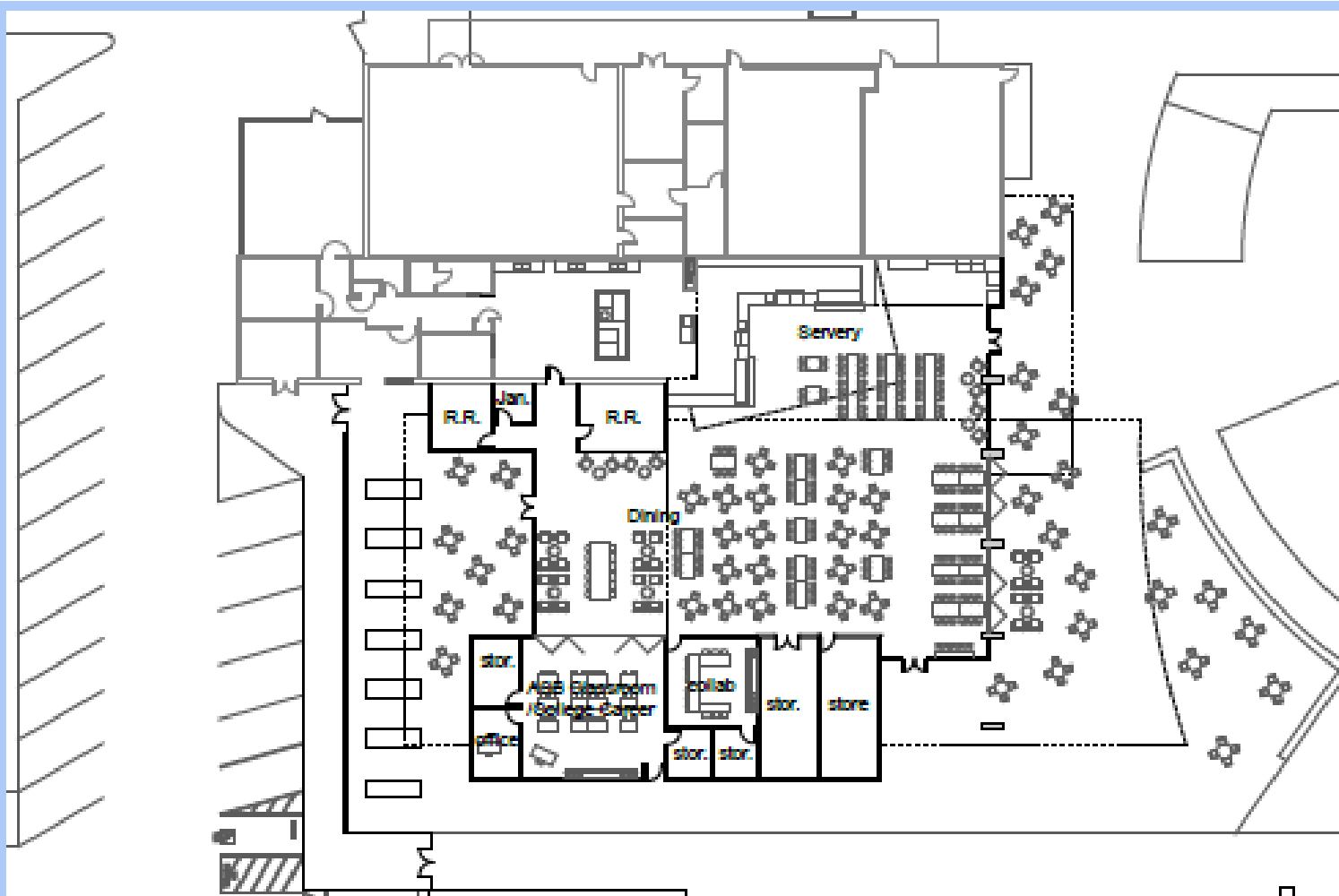
PROGRAM / PLANNING

ORIGINAL PROGRAMMING



- **Total Project Funding \$7.2M – Sources**
 - **Grande Property Sale - \$5.5M**
 - **COPS - \$1.7M**
- **Project Needs Drives Budget Needs**
- **Original Program - 14,354 Sq. Ft.**
- **Approved Added MPR Program Areas**
 - **Student Union/Store**
 - **Kitchen Prep Areas**
 - **Career Ctr. & Classroom**
 - **Storage**
 - **Student Activities Director Office**

ORIGINAL PROGRAM FLOOR PLAN

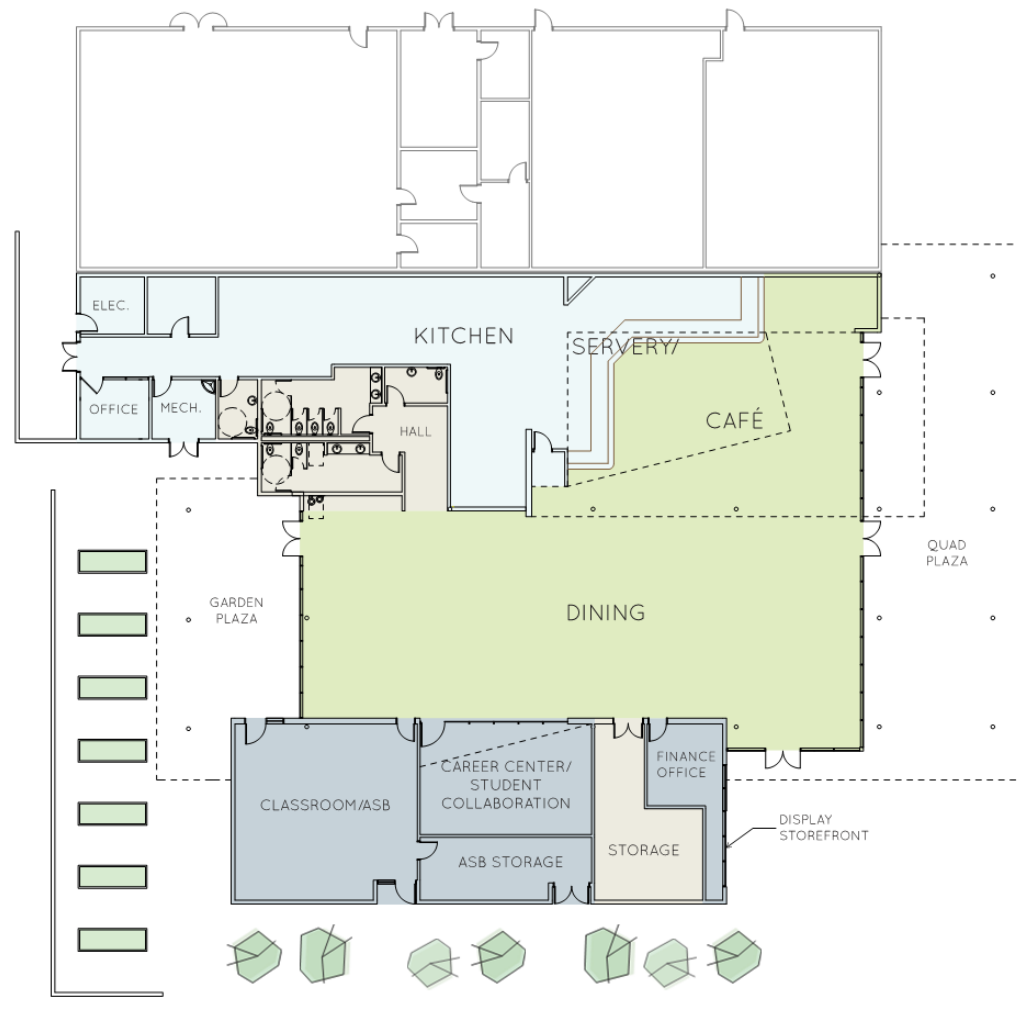


BUDGET ESTIMATE OF ORIGINAL ASC PROGRAM



- Total Estimated Hard Construction - \$ 4.42M
- Contractor General Conditions/Profit - \$ 593K
- Design Contingency - \$ 501K
- Project Escalation (5%) - \$ 275K
- Soft Costs (Architect Fee, Reports, DSA) - \$ 952K
- Project Contingency (10%) - \$ 472K
- Total Project Cost (Estimated) \$ 7.21M

FINAL SCHEMATIC DESIGN FLOOR PLAN



PROGRAM / PLANNING SCHEMATIC DESIGN



- Total Existing Building Areas 5,996 Sq. Ft.
- Total New Construction 11,733 Sq. Ft.
- Total New Covered Area 3,851 Sq. Ft.
- Key MPR Program Use Areas
 - Student Career Center & Collaboration Area
 - Kitchen/Servery & Café
 - Full Classroom Area
 - Portable Stage & Dining Storage
 - School's Finance Office
- 10 Month Construction Period

BUDGET ESTIMATE OF CURRENT ASC SCHEMATIC DESIGN PLAN



- Total Estimated Hard Construction - \$ 4.7M
- Contractor General Conditions/Profit - \$ 596K
- Design Contingency - \$ 444K
- Project Escalation (5%) - \$ 227K
- Soft Costs (Architect Fee, Reports, DSA) - \$ 692K
- Project Contingency (10%) - \$ 472K
- Fixed Furniture - \$ 174K
- Total SD Project Cost (Estimated) \$ 7.3M

RENDERING OF NEW ASC



VIEW FROM QUAD

RENDERING OF NEW ASC



VIEW FROM QUAD

RENDERING OF NEW ASC



VIEW FROM INTERIOR

PROJECT SCHEDULE



■ June 25, 2015	Programming Presentation
■ August 6, 2015	Final Program/Budget Options
■ January 7, 2016	District Approves Final Design
■ February 2016	District Approval of DD's
■ April 2016	District Approval of CD's
■ July 2016	Project Out to Bid
■ August 2016	District Approves Bid (NTP)
■ August 2016 – Sept. 2017	Construction Activities
■ August 2017	Project Complete

NEXT STEPS



- **Continue to Design Development Phase**
- **Refine Budget to Scope to Achieve Project Budget**
- **Submit Applications for Supplemental Funding**
- **Pre-Application Meeting With DSA on Design**
- **Establish Pre-Qualifications Criteria - Contractors**
- **Develop Facility Use Program**
- **Develop Specific Design Elements – FF&E**

QUESTIONS



QUESTIONS AND COMMENTS