



Reference is hereby made to the following  
parcel map for the lines and dimensions  
of parcels within this Assessment Diagram.

APNs:  
069-511-021  
069-512-005

SCI Consulting Group  
4745 Mangle Blvd.  
Fairfield, CA 94534  
(707) 430-4300

#### LEGEND



Subject Properties



Annexation Boundary



#### SECRETARY'S MAP FILING STATEMENT

FILED IN THE OFFICE OF THE SECRETARY OF THE BOARD  
OF THE DAVIS JOINT UNIFIED SCHOOL DISTRICT, STATE OF  
CALIFORNIA, THIS \_\_\_\_\_ DAY OF \_\_\_\_\_, 2011

\_\_\_\_\_  
SECRETARY OF THE BOARD

#### SECRETARY'S MAP CERTIFICATE

I DO HEREBY CERTIFY THAT THE WITHIN MAP  
SHOWING THE PROPOSED BOUNDARIES OF ANNEXATION  
NO. 7 TO THE COMMUNITY FACILITIES DISTRICT (NO. 2),  
DAVIS JOINT UNIFIED SCHOOL DISTRICT, COUNTY OF YOLO,  
STATE OF CALIFORNIA, WAS APPROVED BY THE BOARD OF  
TRUSTEES OF THE DAVIS JOINT UNIFIED SCHOOL DISTRICT  
AT A MEETING THEREOF, HELD ON THE 17TH DAY OF  
NOVEMBER, 2011, BY ITS RESOLUTION NO. 30-12.

\_\_\_\_\_  
SECRETARY OF THE BOARD

#### RECORDER'S CERTIFICATE

FILED THIS \_\_\_\_\_ DAY OF \_\_\_\_\_, 2011 AT THE  
HOUR OF \_\_\_\_\_ O'CLOCK \_\_\_\_\_ M. IN BOOK  
OF MAPS OF ASSESSMENT AND COMMUNITY  
FACILITIES DISTRICTS AT PAGE \_\_\_\_\_, IN THE  
OFFICE OF THE COUNTY RECORDER IN THE COUNTY OF  
YOLO, STATE OF CALIFORNIA.

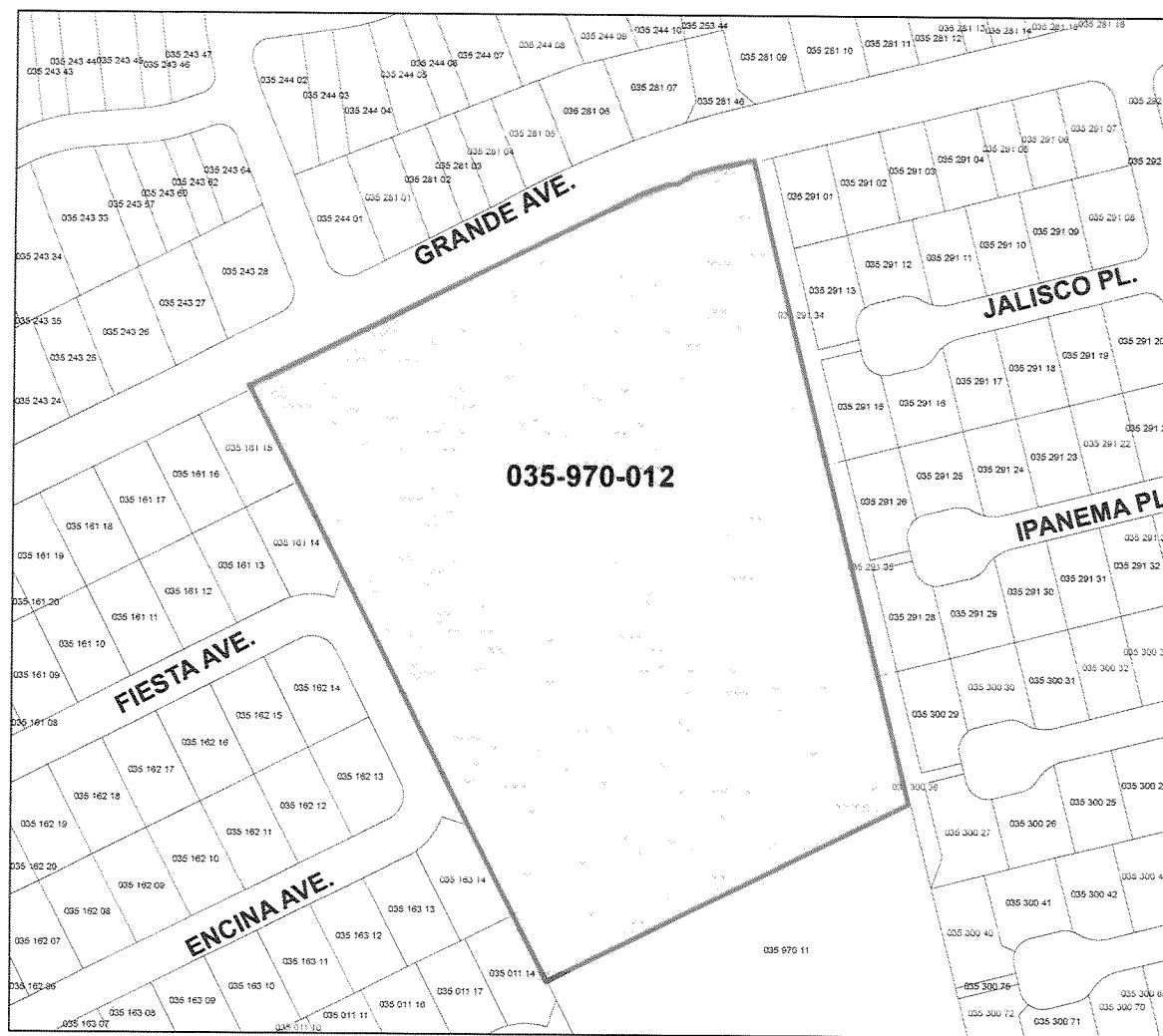
\_\_\_\_\_  
COUNTY RECORDER, COUNTY OF YOLO

NOTE:  
REFERENCE IS HEREBY MADE TO THE MAPS  
AND DEEDS OF RECORD IN THE OFFICE OF  
THE ASSESSOR OF THE COUNTY OF YOLO  
FOR A DETAILED DESCRIPTION OF THE LINES  
AND DIMENSIONS OF ANY PARCELS SHOWN  
HEREIN. THOSE MAPS SHALL GOVERN FOR  
ALL DETAILS CONCERNING THE LINES AND  
DIMENSIONS OF SUCH PARCELS. EACH  
PARCEL IS IDENTIFIED IN SAID MAPS BY  
ITS DISTINCTIVE ASSESSOR'S PARCEL  
NUMBER.

## ANNEXATION MAP #7 OF COMMUNITY FACILITIES DISTRICT NO. 2 OF THE DAVIS JOINT UNIFIED SCHOOL DISTRICT CITY OF DAVIS, YOLO COUNTY, CALIFORNIA

ref. Map of Proposed Boundary Annexation No. 6,  
book 069, page 230, parcels 391 through 401,  
recorded Sept. 27, 2005

Page 1 of 5 (Willowbank)



### SECRETARY'S MAP FILING STATEMENT

FILED IN THE OFFICE OF THE SECRETARY OF THE BOARD  
OF THE DAVIS JOINT UNIFIED SCHOOL DISTRICT, STATE OF  
CALIFORNIA, THIS \_\_\_\_\_ DAY OF \_\_\_\_\_ 2011.

SECRETARY OF THE BOARD

SECRETARY'S MAP CERTIFICATE

I DO HEREBY CERTIFY THAT THE WITHIN MAP  
SHOWING THE PROPOSED BOUNDARIES OF ANNEXATION  
NO. 7 TO THE COMMUNITY FACILITIES DISTRICT (NO. 2),  
DAVIS JOINT UNIFIED SCHOOL DISTRICT, COUNTY OF YOLO,  
STATE OF CALIFORNIA, WAS APPROVED BY THE BOARD OF  
TRUSTEES OF THE DAVIS JOINT UNIFIED SCHOOL DISTRICT  
AT A MEETING THEREOF, HELD ON THE 17TH DAY OF  
NOVEMBER, 2011, BY ITS RESOLUTION NO. 30-12.

SECRETARY OF THE BOARD

RECORDED'S CERTIFICATE

FILED THIS \_\_\_\_\_ DAY OF \_\_\_\_\_, 2011 AT THE  
HOUR OF \_\_\_\_\_ O'CLOCK \_\_\_\_\_ M. IN BOOK  
\_\_\_\_\_ OF MAPS OF ASSESSMENT AND COMMUNITY  
FACILITIES DISTRICTS AT PAGE \_\_\_\_\_, IN THE  
OFFICE OF THE COUNTY RECORDER IN THE COUNTY OF  
YOLO, STATE OF CALIFORNIA.

COUNTY RECORDER, COUNTY OF YOLO

NOTE:  
REFERENCE IS HEREBY MADE TO THE MAPS  
AND DEEDS OF RECORD IN THE OFFICE OF  
THE ASSESSOR OF THE COUNTY OF YOLO  
FOR A DETAILED DESCRIPTION OF THE LINES  
AND DIMENSIONS OF ANY PARCELS SHOWN  
HEREIN. THOSE MAPS SHALL GOVERN FOR  
ALL DETAILS CONCERNING THE LINES AND  
DIMENSIONS OF SUCH PARCELS. EACH  
PARCEL IS IDENTIFIED IN SAID MAPS BY  
ITS DISTINCTIVE ASSESSOR'S PARCEL  
NUMBER.

Reference is hereby made to the following  
parcel map for the lines and dimensions  
of parcels within this Assessment Diagram.

APN:  
035-970-012

SCI Consulting Group  
4745 Mangels Blvd.  
Fairfield, CA 94534  
(707) 430-4300

### LEGEND

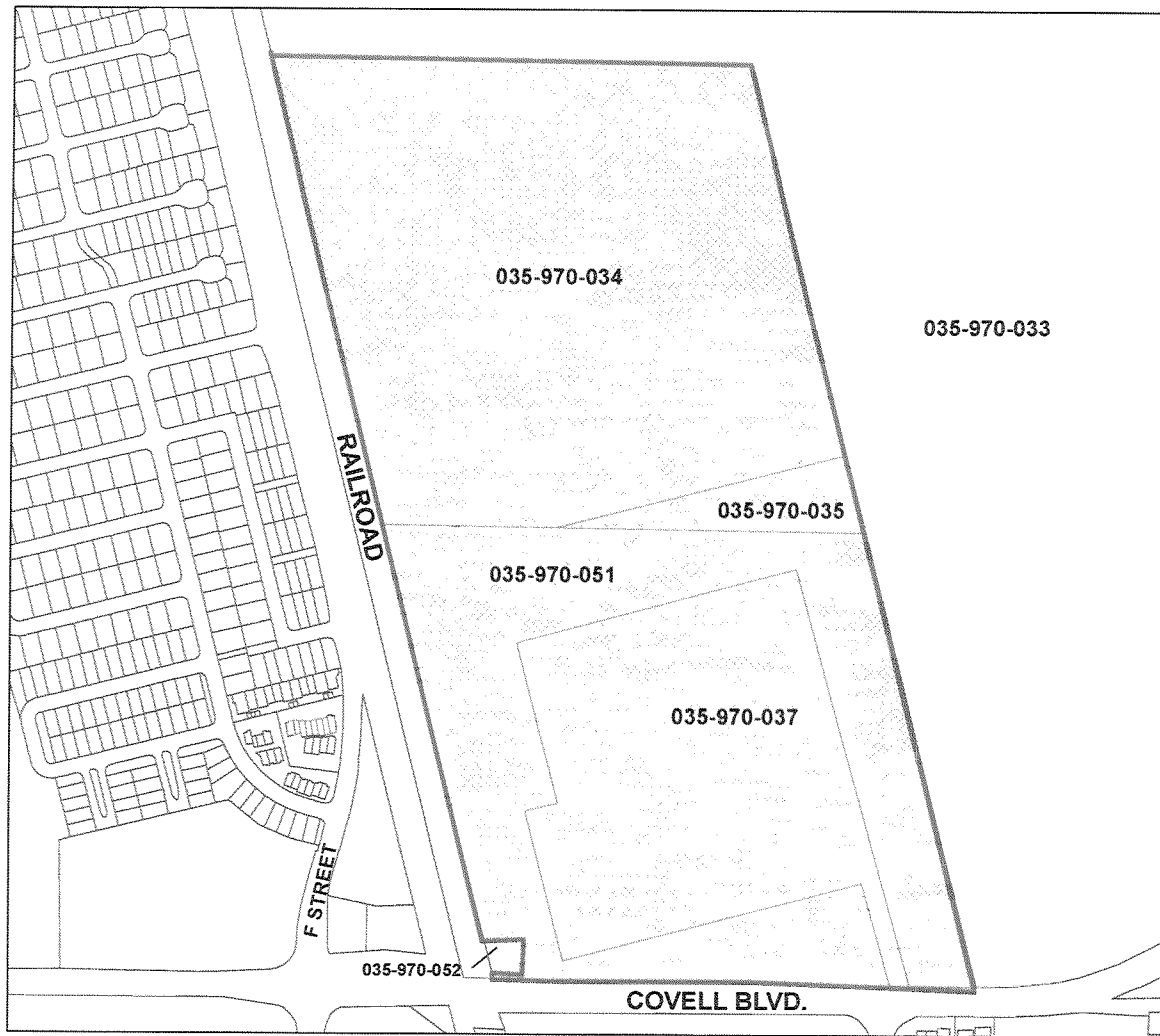
## Subject Properties

**Annexation Boundary**

**ANNEXATION MAP #7 OF  
COMMUNITY FACILITIES DISTRICT NO. 2 OF THE  
DAVIS JOINT UNIFIED SCHOOL DISTRICT  
CITY OF DAVIS, YOLO COUNTY, CALIFORNIA**

ref. Map of Proposed Boundary Annexation No. 6,  
book 069, page 230, parcels 391 through 401,  
recorded Sept. 27, 2005



Page 2 of 5 (Grande)



Reference is hereby made to the following  
parcel map for the lines and dimensions  
of parcels within this Assessment Diagram.

SCI Consulting Group  
4745 Mangels Blvd.  
Fairfield, CA 94534  
(707) 430-4300

#### LEGEND

-  Subject Properties
-  Annexation Boundary

APNs:  
035-970-034  
035-970-035  
035-970-037  
035-970-051

#### SECRETARY'S MAP FILING STATEMENT

FILED IN THE OFFICE OF THE SECRETARY OF THE BOARD  
OF THE DAVIS JOINT UNIFIED SCHOOL DISTRICT, STATE OF  
CALIFORNIA, THIS \_\_\_\_\_ DAY OF \_\_\_\_\_ 2011.

\_\_\_\_\_  
SECRETARY OF THE BOARD

#### SECRETARY'S MAP CERTIFICATE

I DO HEREBY CERTIFY THAT THE WITHIN MAP  
SHOWING THE PROPOSED BOUNDARIES OF ANNEXATION  
NO. 7 TO THE COMMUNITY FACILITIES DISTRICT (NO. 2),  
DAVIS JOINT UNIFIED SCHOOL DISTRICT, COUNTY OF YOLO,  
STATE OF CALIFORNIA, WAS APPROVED BY THE BOARD OF  
TRUSTEES OF THE DAVIS JOINT UNIFIED SCHOOL DISTRICT  
AT A MEETING THEREOF, HELD ON THE 17TH DAY OF  
NOVEMBER, 2011, BY ITS RESOLUTION NO. 30-12.

\_\_\_\_\_  
SECRETARY OF THE BOARD

#### RECORDER'S CERTIFICATE

FILED THIS \_\_\_\_\_ DAY OF \_\_\_\_\_, 2011 AT THE  
HOUR OF \_\_\_\_\_ O'CLOCK \_\_\_\_\_ M. IN BOOK  
\_\_\_\_\_ OF MAPS OF ASSESSMENT AND COMMUNITY  
FACILITIES DISTRICTS AT PAGE \_\_\_\_\_ IN THE  
OFFICE OF THE COUNTY RECORDER IN THE COUNTY OF  
YOLO, STATE OF CALIFORNIA.

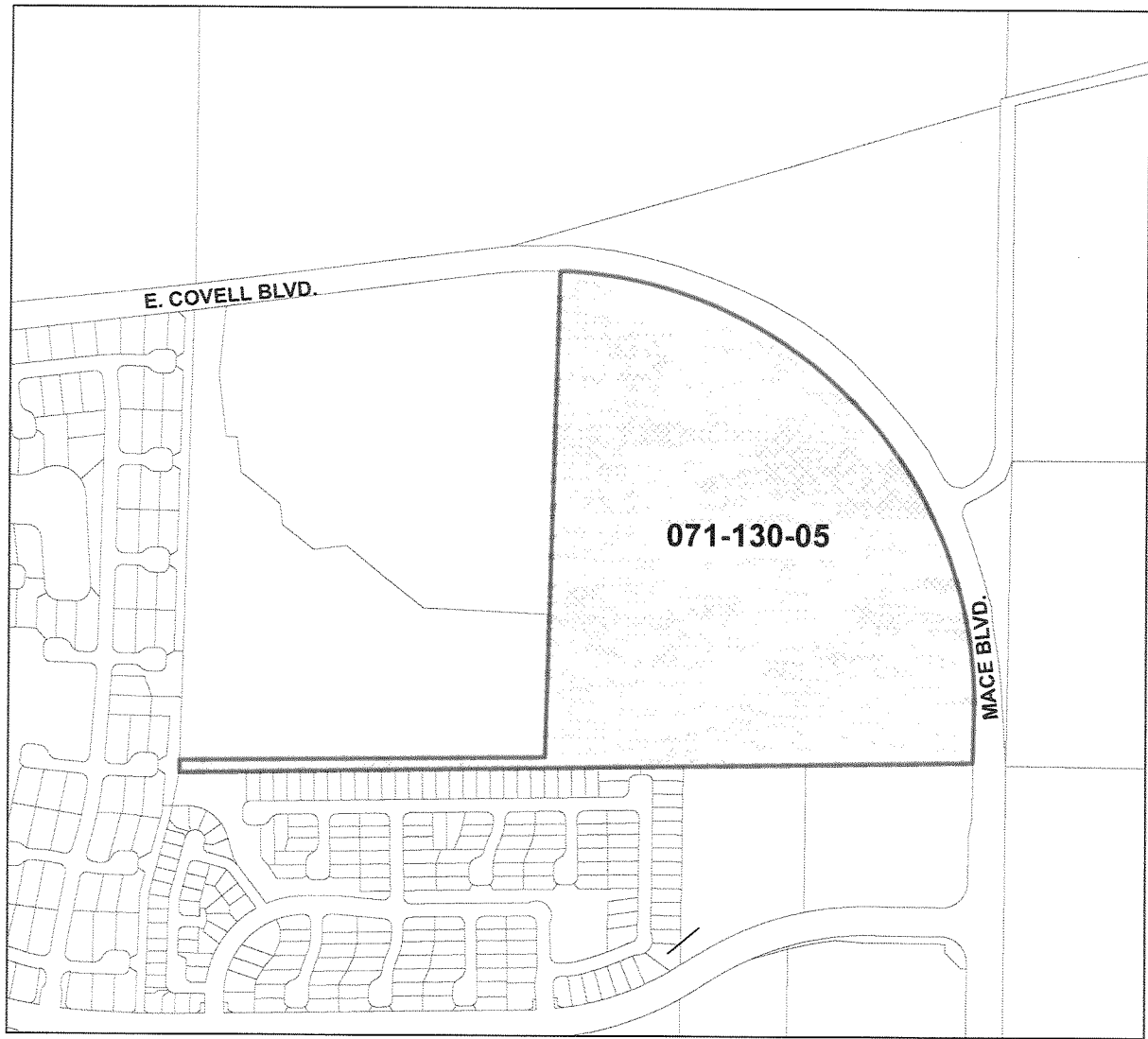
\_\_\_\_\_  
COUNTY RECORDER, COUNTY OF YOLO

NOTE:  
REFERENCE IS HEREBY MADE TO THE MAPS  
AND DEEDS OF RECORD IN THE OFFICE OF  
THE ASSESSOR OF THE COUNTY OF YOLO  
FOR A DETAILED DESCRIPTION OF THE LINES  
AND DIMENSIONS OF ANY PARCELS SHOWN  
HEREIN. THOSE MAPS SHALL GOVERN FOR  
ALL DETAILS CONCERNING THE LINES AND  
DIMENSIONS OF SUCH PARCELS. EACH  
PARCEL IS IDENTIFIED IN SAID MAPS BY  
ITS DISTINCTIVE ASSESSOR'S PARCEL  
NUMBER.

## ANNEXATION MAP #7 OF COMMUNITY FACILITIES DISTRICT NO. 2 OF THE DAVIS JOINT UNIFIED SCHOOL DISTRICT CITY OF DAVIS, YOLO COUNTY, CALIFORNIA

ref. Map of Proposed Boundary Annexation No. 6,  
book 069, page 230, parcels 391 through 401,  
recorded Sept. 27, 2005


Page 3 of 5 (Cannery Park)




Reference is hereby made to the following  
parcel map for the lines and dimensions  
of parcels within this Assessment Diagram.

**APN:**  
**071-130-05**

**LEGEND**

 Subject Properties

 Annexation Boundary

SCI Consulting Group  
4745 Mangels Blvd.  
Fairfield, CA 94534  
(707) 430-4300



**SECRETARY'S MAP FILING STATEMENT**

FILED IN THE OFFICE OF THE SECRETARY OF THE BOARD  
OF THE DAVIS JOINT UNIFIED SCHOOL DISTRICT, STATE OF  
CALIFORNIA, THIS \_\_\_\_\_ DAY OF \_\_\_\_\_ 2011.

\_\_\_\_\_  
SECRETARY OF THE BOARD

**SECRETARY'S MAP CERTIFICATE**

I DO HEREBY CERTIFY THAT THE WITHIN MAP  
SHOWING THE PROPOSED BOUNDARIES OF ANNEXATION  
NO. 7 TO THE COMMUNITY FACILITIES DISTRICT (NO. 2),  
DAVIS JOINT UNIFIED SCHOOL DISTRICT, COUNTY OF YOLO,  
STATE OF CALIFORNIA, WAS APPROVED BY THE BOARD OF  
TRUSTEES OF THE DAVIS JOINT UNIFIED SCHOOL DISTRICT  
AT A MEETING THEREOF, HELD ON THE 17TH DAY OF  
NOVEMBER, 2011, BY ITS RESOLUTION NO. 30-12.

\_\_\_\_\_  
SECRETARY OF THE BOARD

**RECORDER'S CERTIFICATE**

FILED THIS \_\_\_\_\_ DAY OF \_\_\_\_\_, 2011 AT THE  
HOUR OF \_\_\_\_\_ O'CLOCK \_\_\_\_\_ M. IN BOOK  
\_\_\_\_\_ OF MAPS OF ASSESSMENT AND COMMUNITY  
FACILITIES DISTRICTS AT PAGE \_\_\_\_\_, IN THE  
OFFICE OF THE COUNTY RECORDER IN THE COUNTY OF  
YOLO, STATE OF CALIFORNIA.

\_\_\_\_\_  
COUNTY RECORDER, COUNTY OF YOLO

NOTE:  
REFERENCE IS HEREBY MADE TO THE MAPS  
AND DEEDS OF RECORD IN THE OFFICE OF  
THE ASSESSOR OF THE COUNTY OF YOLO  
FOR A DETAILED DESCRIPTION OF THE LINES  
AND DIMENSIONS OF ANY PARCELS SHOWN  
HEREIN. THOSE MAPS SHALL GOVERN FOR  
ALL DETAILS CONCERNING THE LINES AND  
DIMENSIONS OF SUCH PARCELS. EACH  
PARCEL IS IDENTIFIED IN SAID MAPS BY  
ITS DISTINCTIVE ASSESSOR'S PARCEL  
NUMBER.

**ANNEXATION MAP #7 OF  
COMMUNITY FACILITIES DISTRICT NO. 2 OF TH  
DAVIS JOINT UNIFIED SCHOOL DISTRICT  
CITY OF DAVIS, YOLO COUNTY, CALIFORNIA**

ref. Map of Proposed Boundary Annexation No. 6,  
book 069, page 230, parcels 391 through 401,  
recorded Sept. 27, 2005

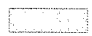



Reference is hereby made to the following  
parcel map for the lines and dimensions  
of parcels within this Assessment Diagram.

SCi Consulting Group  
4745 Mangels Blvd.  
Fairfield, CA 94534  
(707) 430-4300

APNs:  
071-401-02  
071-401-03  
071-020-15

#### LEGEND

 Subject Properties  
 Annexation Boundary



#### SECRETARY'S MAP FILING STATEMENT

FILED IN THE OFFICE OF THE SECRETARY OF THE BOARD  
OF THE DAVIS JOINT UNIFIED SCHOOL DISTRICT, STATE OF  
CALIFORNIA, THIS \_\_\_\_\_ DAY OF \_\_\_\_\_ 2011.

\_\_\_\_\_  
SECRETARY OF THE BOARD

#### SECRETARY'S MAP CERTIFICATE

I DO HEREBY CERTIFY THAT THE WITHIN MAP  
SHOWING THE PROPOSED BOUNDARIES OF ANNEXATION  
NO. 7 TO THE COMMUNITY FACILITIES DISTRICT (NO. 2),  
DAVIS JOINT UNIFIED SCHOOL DISTRICT, COUNTY OF YOLO,  
STATE OF CALIFORNIA, WAS APPROVED BY THE BOARD OF  
TRUSTEES OF THE DAVIS JOINT UNIFIED SCHOOL DISTRICT  
AT A MEETING THEREOF, HELD ON THE 17TH DAY OF  
NOVEMBER, 2011, BY ITS RESOLUTION NO. 30-12.

\_\_\_\_\_  
SECRETARY OF THE BOARD

#### RECORDER'S CERTIFICATE

FILED THIS \_\_\_\_\_ DAY OF \_\_\_\_\_, 2011 AT THE  
HOUR OF \_\_\_\_\_ O'CLOCK \_\_\_\_\_ M. IN BOOK  
\_\_\_\_\_ OF MAPS OF ASSESSMENT AND COMMUNITY  
FACILITIES DISTRICTS AT PAGE \_\_\_\_\_ IN THE  
OFFICE OF THE COUNTY RECORDER IN THE COUNTY OF  
YOLO, STATE OF CALIFORNIA.

\_\_\_\_\_  
COUNTY RECORDER, COUNTY OF YOLO

NOTE:  
REFERENCE IS HEREBY MADE TO THE MAPS  
AND DEEDS OF RECORD IN THE OFFICE OF  
THE ASSESSOR OF THE COUNTY OF YOLO  
FOR A DETAILED DESCRIPTION OF THE LINES  
AND DIMENSIONS OF ANY PARCELS SHOWN  
HEREIN. THOSE MAPS SHALL GOVERN FOR  
ALL DETAILS CONCERNING THE LINES AND  
DIMENSIONS OF SUCH PARCELS. EACH  
PARCEL IS IDENTIFIED IN SAID MAPS BY  
ITS DISTINCTIVE ASSESSOR'S PARCEL  
NUMBER.

## ANNEXATION MAP #7 OF COMMUNITY FACILITIES DISTRICT NO. 2 OF THE DAVIS JOINT UNIFIED SCHOOL DISTRICT CITY OF DAVIS, YOLO COUNTY, CALIFORNIA

ref. Map of Proposed Boundary Annexation No. 6,  
book 069, page 230, parcels 391 through 401,  
recorded Sept. 27, 2005

Page 5 of 5 (Chiles Ranch Subdivision)