

SECRETARY'S MAP FILING STATEMENT
 FILED IN THE OFFICE OF THE CLERK OF THE BOARD OF THE DAVIS JOINT
 UNIFIED SCHOOL DISTRICT, STATE OF CALIFORNIA, THIS 13TH DAY OF
 MARCH, 1992.
[Signature]
 SECRETARY OF THE BOARD

SECRETARY'S MAP CERTIFICATE
 I DO HEREBY CERTIFY THAT THE WITHIN MAP SHOWING THE PROPOSED
 BOUNDARIES OF ANNEXATION NO. 1 TO COMMUNITY FACILITIES DISTRICT
 (NO. 2) OF THE DAVIS JOINT UNIFIED SCHOOL DISTRICT, STATE OF
 CALIFORNIA, WAS APPROVED BY THE BOARD OF TRUSTEES OF THE
 DAVIS JOINT UNIFIED SCHOOL DISTRICT AT A MEETING THEREOF, HELD ON
 THE 17TH DAY OF MARCH, 1992, BY ITS RESOLUTION
 NO. 33-57.
[Signature]
 SECRETARY OF THE BOARD

RECORDERS CERTIFICATE
 FILED THIS 23RD DAY OF MAY 1992 AT THE HOUR OF
 12:10 O'CLOCK P.M. IN BOOK 4 OF MAPS OF ASSESSMENT
 AND COMMUNITY FACILITY DISTRICTS AT PAGE 352, IN THE OFFICE
 OF THE COUNTY RECORDER IN THE COUNTY OF YOLO, STATE OF CALIFORNIA.
[Signature]
 COUNTY RECORDER, COUNTY OF YOLO

LEGEND
 ----- BOUNDARY LINES
 000-000-00 ASSESSOR'S PARCEL NUMBER

FILED IN THE OFFICE OF THE SECRETARY OF THE BOARD OF THE DAVIS JOINT UNIFIED SCHOOL DISTRICT, STATE OF CALIFORNIA, THIS 5TH DAY OF APRIL, 1995.

SECRETARY OF THE BOARD

SECRETARYS MAP CERTIFICATE

DO HEREBY CERTIFY THAT THE WITHIN MAP SHOWING THE PROPOSED BOUNDARIES OF ANNEXATION NO. 3 TO THE COMMUNITIES FACILITIES DISTRICT (NO. 2), DAVIS JOINT UNITED SCHOOL DISTRICT, COUNTY OF YOLO, STATE OF CALIFORNIA, WAS APPROVED BY THE BOARD OF TRUSTEES OF THE DAVIS JOINT UNIFIED SCHOOL DISTRICT AT A MEETING THEREOF, HELD ON THE 24 DAY OF APRIL, 1995 BY ITS RESOLUTION NO. 24-95

SECRETARY OF THE BOARD

RECORDER'S CERTIFICATE

FILED THIS 4TH DAY OF MAY 1995 AT THE
CLOCK IN BOOK 85
HOUR OF 9:20
OF MAPS OF ASSESSMENT AND COMMUNITY FACILITIES
IN THE OFFICE OF
DISTRICTS AT PAGE 34, STATE OF
COUNTY RECORDER IN THE COUNTY OF YOLO, CALIFORNIA.

NOTE:

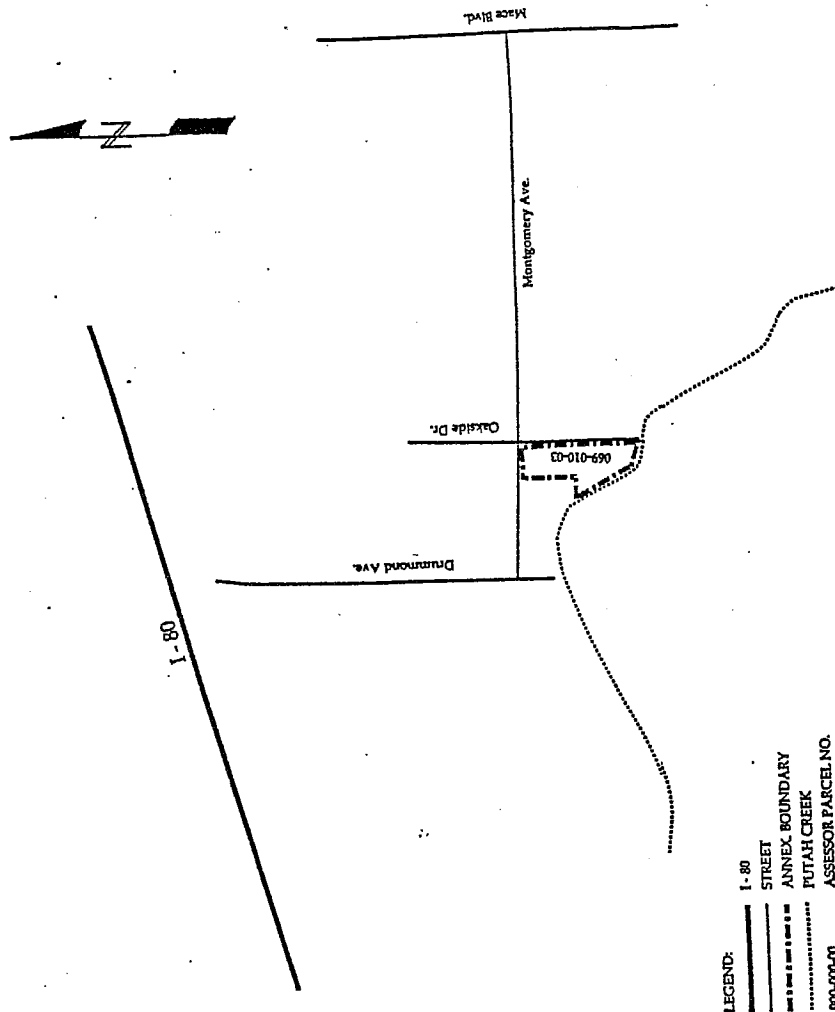
REFERENCE IS HEREBY MADE TO THE MAPS AND DEEDS OF RECORD IN THE OFFICE OF THE ASSESSOR OF THE COUNTY OF YOLO FOR A DETAILED DESCRIPTION OF THE LINES AND DIMENSIONS OF ANY THOSE MAPS SHALL COVER FOR ALL THE DETAILS CONCERNING THE LINES AND DIMENSIONS OF SUCH PARCELS. EACH PARCEL IS IDENTIFIED IN SAID MAPS BY ITS DISTINCTIVE ASSESSOR'S PARCEL NUMBER.

7
COUNTY RECORDER, COUNTY OF YOLO

**MAP OF PROPOSED BOUNDARY
ANNEXATION NO.3**

DAVIS JOINT UNIFIED SCHOOL DISTRICT
COMMUNITY FACILITIES DISTRICT NO.2

CITY OF DAVIS, YOLO COUNTY, CALIFORNIA



SHILTS CONSULTANTS, INC.
1300 BOYNTON AVENUE, SUITE 208
FAIRFIELD, CA 94533
707-426-5016

SECRETARY'S MAP FILING STATEMENT

FILED IN THE OFFICE OF THE SECRETARY OF THE BOARD OF THE DAVIS JOINT UNIFIED SCHOOL DISTRICT, STATE OF CALIFORNIA, THIS ____ DAY OF ____, 1998.

SECRETARY OF THE BOARD

SECRETARY'S MAP CERTIFICATE

I DO HEREBY CERTIFY THAT THE WITHIN MAP SHOWING THE PROPOSED BOUNDARIES OF ANNEXATION NO. 4 TO THE COMMUNITIES FACILITIES DISTRICT (NO. 2), DAVIS JOINT UNIFIED SCHOOL DISTRICT, COUNTY OF YOLO, STATE OF CALIFORNIA, WAS APPROVED BY THE BOARD OF TRUSTEES OF THE DAVIS JOINT UNIFIED SCHOOL DISTRICT AT A MEETING THEREOF, HELD ON THE ____ DAY OF ____, 1998 BY ITS RESOLUTION NO. ____.

SECRETARY OF THE BOARD

RECORDER'S CERTIFICATE

FILED THIS ____ DAY OF ____, 1998 AT THE HOUR OF ____ O'CLOCK ____ M. IN BOOK ____ OF MAPS OF ASSESSMENT AND COMMUNITY FACILITIES DISTRICTS AT PAGE ____ IN THE OFFICE OF THE COUNTY RECORDER IN THE COUNTY OF YOLO, STATE OF CALIFORNIA.

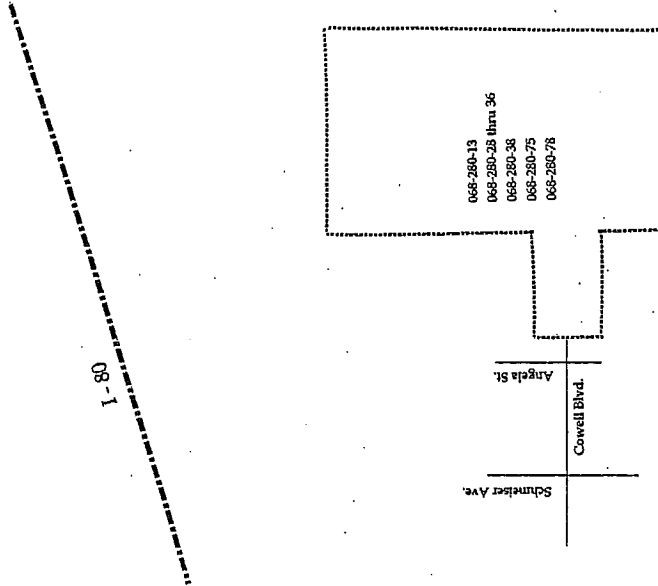
COUNTY RECORDER, COUNTY OF YOLO

NOTE:

REFERENCE IS HEREBY MADE TO THE MAPS AND DEEDS OF RECORD IN THE OFFICE OF THE ASSESSOR OF THE COUNTY OF YOLO FOR A DETAILED DESCRIPTION OF THE LINES AND DIMENSIONS OF ANY PARCELS SHOWN HEREIN. THOSE MAPS SHALL CONSTITUTE THE FINAL RECORDING OF THE LINES AND DIMENSIONS OF SUCH PARCELS. EACH PARCEL IS IDENTIFIED IN SAID MAPS BY ITS DISTINCTIVE ASSESSOR'S PARCEL NUMBER.

**MAP OF PROPOSED BOUNDARY
ANNEXATION NO. 4**

**DAVIS JOINT UNIFIED SCHOOL DISTRICT
COMMUNITY FACILITIES DISTRICT NO. 2
CITY OF DAVIS, YOLO COUNTY, CALIFORNIA**



LEGEND:
I-80
STREET
ANNEX. BOUNDARY
ASSESSOR PARCEL NO.

SHULTS CONSULTANTS, INC.
2300 BOYNTON AVENUE, SUITE 201
FAIRFIELD, CA 94533
707-425-5016

MAP OF PROPOSED BOUNDARY ANNEXATION NO. 5

DAVIS JOINT UNIFIED SCHOOL DISTRICT COMMUNITY FACILITIES DISTRICT NO. 2

CITY OF DAVIS, YOLO COUNTY, CALIFORNIA

SECRETARY'S MAP FILING STATEMENT

FILED IN THE OFFICE OF THE SECRETARY OF THE
BOARD OF THE DAVIS JOINT UNIFIED SCHOOL
DISTRICT, STATE OF CALIFORNIA, THIS 16th
DAY OF October, 2003.

[Signature]
SECRETARY OF THE BOARD

SECRETARY'S MAP CERTIFICATE

I DO HEREBY CERTIFY THAT THE WITHIN MAP
SHOWING THE PROPOSED BOUNDARIES OF
ANNEXATION NO. 5 TO THE COMMUNITIES FACIL-
ITIES DISTRICT (NO. 2), DAVIS JOINT UNIFIED SCHOOL
DISTRICT, COUNTY OF YOLO, STATE OF
CALIFORNIA, WAS APPROVED BY THE BOARD OF
TRUSTEES OF THE DAVIS JOINT UNIFIED SCHOOL
DISTRICT AT A MEETING THEREOF, HELD ON THE
23rd DAY OF October, 2003 BY ITS
RESOLUTION NO. 34-04.

[Signature]
SECRETARY OF THE BOARD

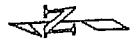
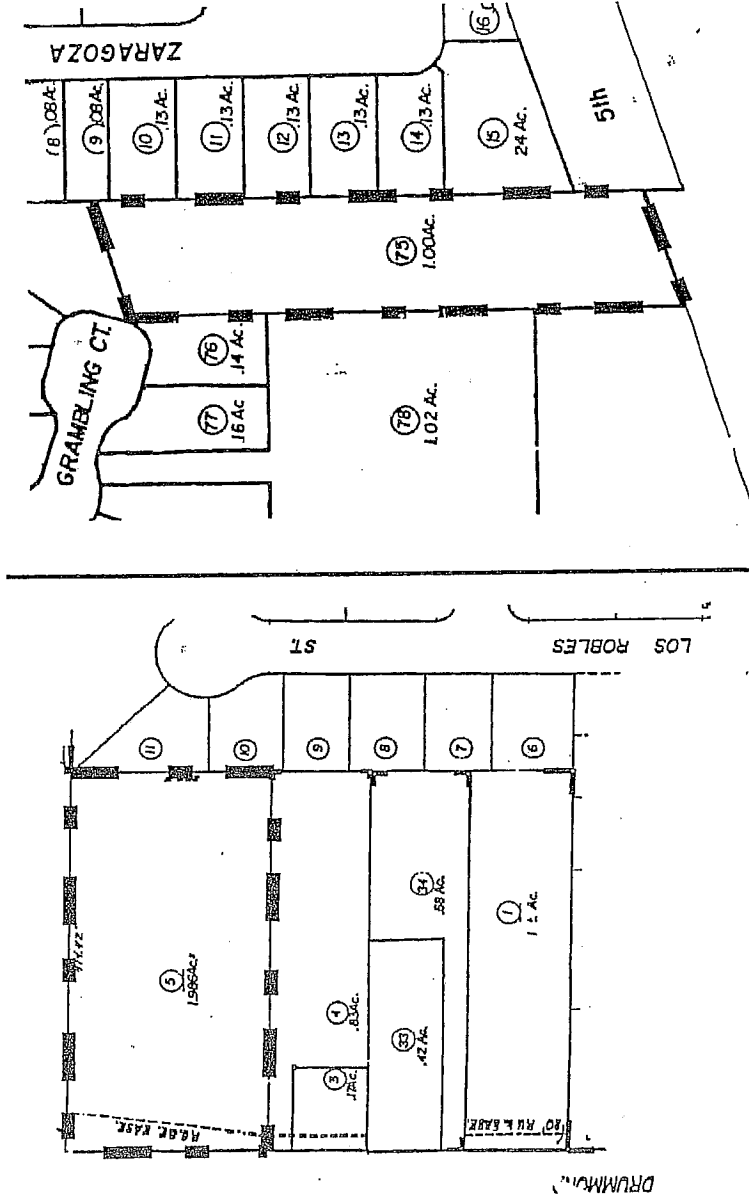
RECORDERS CERTIFICATE

FILED THIS 17th DAY OF November, 2003
AT THE HOUR OF O'CLOCK, M.
IN BOOK OF MAPS OF ASSESSMENT AND
COMMUNITY FACILITIES DISTRICTS AT PAGE
IN THE OFFICE OF THE COUNTY
RECORDER IN THE COUNTY OF YOLO, STATE OF
CALIFORNIA.

COUNTY RECORDER, COUNTY OF YOLO

NOTE:

REFERENCE IS HEREBY MADE TO THE MAPS AND DEEDS OF
RECORD IN THE OFFICE OF THE ASSESSOR OF THE COUNTY
OF YOLO FOR A DETAILED DESCRIPTION OF THE LINES AND
DIMENSIONS OF ANY PARCELS SHOWN HEREIN. THOSE
MAPS SHALL GOVERN FOR ALL DETAILS CONCERNING THE
LINES AND DIMENSIONS OF SUCH PARCELS. EACH PARCEL IS
IDENTIFIED IN SAID MAPS BY ITS DISTINCTIVE ASSESSOR'S
PARCEL NUMBER.



APNs:
069-210-051
071-070-751

Legend:
— Assessment Boundary Line
— Street

Shilts Consultants, Inc., 2300 Boynton Avenue, Suite 201
Folsom, CA 95633 (707) 426-5016

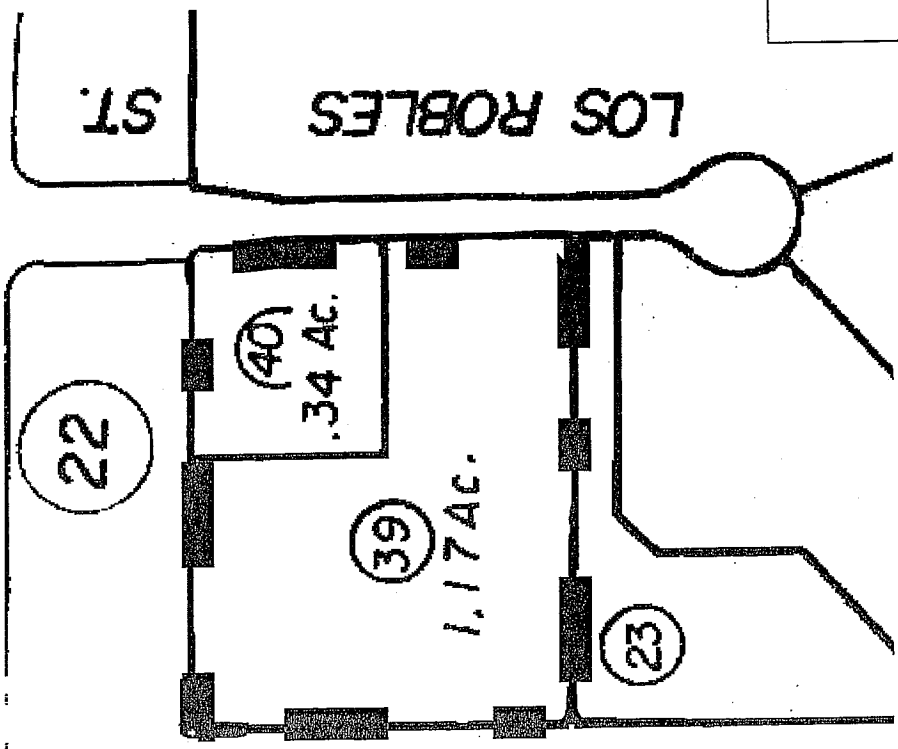


MAP OF PROPOSED BOUNDARY
ANNEXATION NO. 6

DAVIS JOINT UNIFIED SCHOOL DISTRICT
COMMUNITY FACILITIES DISTRICT NO. 2

CITY OF DAVIS, YOLO COUNTY, CALIFORNIA

COWELL BLVD.)



Reference is hereby made to the following
parcel map for the lines and dimensions
of parcels within this Assessment Diagram.

APNs:
069-230-391
through
069-230-401

Legend:
- - - Assessment Boundary Line
- - - Street

SECRETARY'S MAP FILING STATEMENT

FILED IN THE OFFICE OF THE SECRETARY OF THE BOARD
OF THE DAVIS UNIFIED SCHOOL DISTRICT, STATE OF
CALIFORNIA, THIS _____ DAY OF _____, 2005.

SECRETARY OF THE BOARD

SECRETARY'S MAP CERTIFICATE

I DO HEREBY CERTIFY THAT THE WITHIN MAP SHOWING
THE PROPOSED BOUNDARIES OF ANNEXATION NO. 6 TO
THE COMMUNITY FACILITIES DISTRICT (NO. 2), DAVIS JOINT
UNIFIED SCHOOL DISTRICT, COUNTY OF YOLO, STATE OF
CALIFORNIA, WAS APPROVED BY THE BOARD OF TRUSTEES
OF THE DAVIS JOINT UNIFIED SCHOOL DISTRICT AT A MEET-
ING THEREOF, HELD ON THE _____ DAY OF _____,
2005 BY ITS RESOLUTION NO. _____

SECRETARY OF THE BOARD

RECORDER'S CERTIFICATE

FILED THIS _____ DAY OF _____, 2005 AT THE
HOUR OF _____ O'CLOCK _____ M. IN BOOK _____ OF
MAPS OF ASSESSMENT AND COMMUNITY FACILITIES DIS-
TRICTS AT PAGE _____ IN THE OFFICE OF
THE COUNTY RECORDER IN THE COUNTY OF YOLO, STATE
OF CALIFORNIA.

COUNTY RECORDER, COUNTY OF YOLO

NOTE:

REFERENCE IS HEREBY MADE TO THE MAPS AND DEEDS OF
RECORD IN THE OFFICE OF THE ASSESSOR OF THE COUN-
TY OF YOLO FOR A DETAILED DESCRIPTION OF THE LINES
AND DIMENSIONS OF ANY PARCELS SHOWN HEREIN.
THOSE MAPS SHALL GOVERN FOR ALL DETAILS CONCERN-
ING THE LINES AND DIMENSIONS OF SUCH PARCELS. EACH
PARCEL IS IDENTIFIED IN SAID MAPS BY ITS DISTINCTIVE
ASSESSOR'S PARCEL NUMBER.