

Safe Return to School 2021 - Health and Safety Update – March 3, 2022

CALIFORNIA SMARTER



THE NEXT PHASE OF CALIFORNIA'S COVID-19 RESPONSE

Anchored in our Focus on Equity and Addressing Disparities.

SHOTS

Vaccines are the most powerful weapon against hospitalizations and serious illness.

MASKS

Properly worn masks with good filtration help slow the spread of COVID-19 or other respiratory viruses.

AWARENESS

We will continue to stay aware of how COVID-19 is spreading, evolving variants, communicate clearly how people should protect themselves, and coordinate our state and local government response.

READINESS

COVID-19 is not going away and we need to be ready with the tools, resources, and supplies we will need to quickly respond and keep public health and the health care system well prepared.

TESTING

Getting the right type of tests - PCR or antigen - to where they are needed most. Testing will help California minimize the spread of COVID-19.

EDUCATION

California will continue to work to keep schools open and children safely in classrooms for in-person instruction.

RX

Evolving and improving treatments will become increasingly available and critical as a tool to save lives.



Cases

(7- day average by episode date)

Case Rate

(Per 100,000/ Day)

Hospitalizations

(COVID-19 Positive)

Pediatric Hospitalizations

(COVID-19 Positive)

Hospital Admissions

(COVID-19 Positive)

Test Positivity

(7- day average)

February 14

22,875

57

8,189

232

1,047

6.2%

February 28

7,819

19.5

4,233

124

528

2.9%

Difference

↓ -66%

↓ -66%

↓ -48%

↓ -47%

↓ -50%

↓ -53%

Yolo County COVID-19 Dashboard Update

COVID CASES & TRENDS

Total

Daily Active
Covid-19
Cases

787

Daily Cases
per 100,000

21.4

2 Week %
Change &
Trend

-48% ✓

-56% ✓

Weekly Trends Updated: February 28, 2022

Total Hospitalized
10

In Yolo County from COVID

Vaccinated Hospitalized
0

In Yolo County from COVID

Yolo Test Positivity*
1%

State Test Positivity*
2.8%

COVID-19 CASES FOR 2021-22

	Staff	Students
August	10	34
September	8	62
October	4	35
November	3	19
December	29	75
January	142	959
February	32	161
March	1	2

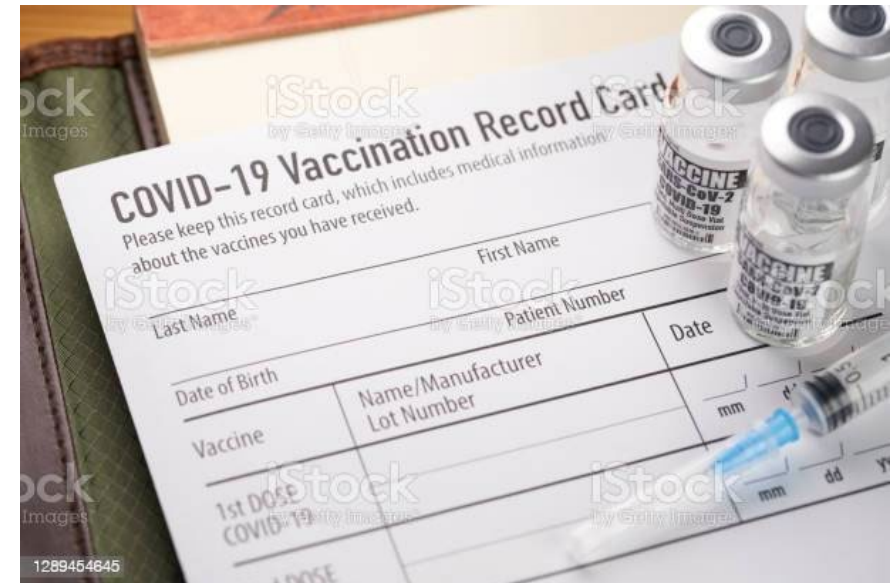
SCHOOL VACCINE RATES

Elementary: Average is 60%

Secondary: Average is 73%

District-wide: 67%

*as of February 25, 2022





CDC COMMUNITY LEVELS

COVID-19 Community Levels – Use the Highest Level that Applies to Your Community

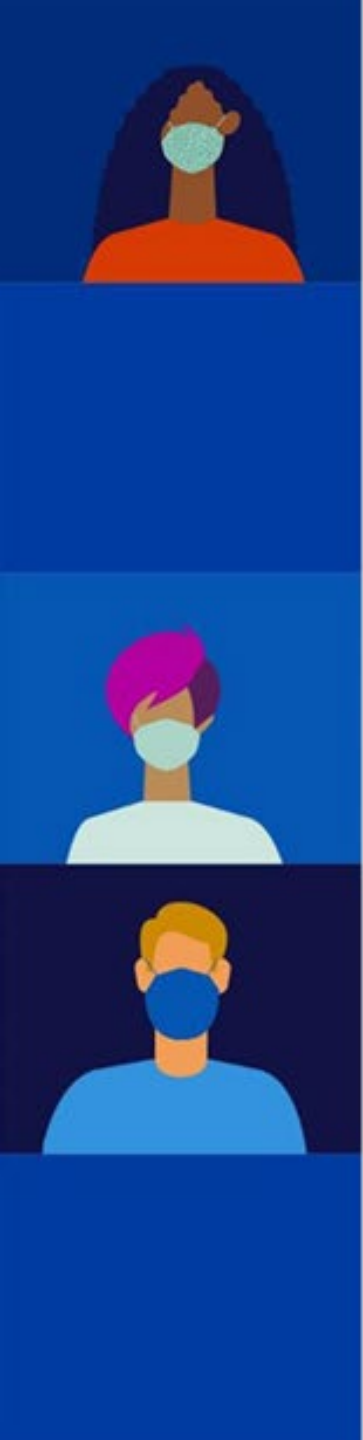
New COVID-19 Cases Per 100,000 people in the past 7 days	Indicators	Low	Medium	High
Fewer than 200	New COVID-19 admissions per 100,000 population (7-day total)	<10.0	10.0-19.9	≥20.0
	Percent of staffed inpatient beds occupied by COVID-19 patients (7-day average)	<10.0%	10.0-14.9%	≥15.0%
200 or more	New COVID-19 admissions per 100,000 population (7-day total)	NA	<10.0	≥10.0
	Proportion of staffed inpatient beds occupied by COVID-19 patients (7-day average)	NA	<10.0%	≥10.0%

PROPOSED masking guidance in California

		REQUIRED	STRONGLY RECOMMENDED	RECOMMENDED	OPTIONAL
Vaccinated & Unvaccinated	Public Indoor (Effective end of day February 28)			<input checked="" type="checkbox"/>	
	Schools & Childcare (Effective end of day March 11)			<input checked="" type="checkbox"/>	
	Health Care	<input checked="" type="checkbox"/>			
	Long-Term Care	<input checked="" type="checkbox"/>			
	Jails & Prisons	<input checked="" type="checkbox"/>			

NOTE: Locals may have additional requirements beyond the state requirements based on local conditions including community vaccine rates or vaccination rates in schools and childcare facilities.





Be **KIND**

Be **ACCEPTING**

Be **RESPECTFUL**

Be **SAFE**



CONSIDERATIONS

- New CDC and CDPH Guidance
- Community division
- Staff feedback
- History of surges after break
- Preparing students, staff, community for the change
- Staff/student health-related choices
- Social-emotional wellbeing of students/staff
- Vaccine availability for 0-4 year olds
- Community transmission levels
- What our partners/neighbors are doing

Board Direction

- Staff is requesting Board direction regarding what date to remove the indoor masking mandate

Questions and Discussion