



**COOPERATIVE**  
**STRATEGIES**

COMPLETE FINANCIAL & DEMOGRAPHIC PLANNING FOR EDUCATION

**DAVIS JOINT UNIFIED  
SCHOOL DISTRICT**

**TRUSTEE AREA PROCESS**

**SEPTEMBER 5, 2019**



# TYPES OF ELECTIONS

## AT-LARGE ELECTIONS

Candidates must reside within the District's boundaries and are elected by all the voters who reside in the District's boundaries (Education Code Section 5030(a)). This is the method of election currently used by Davis Joint Unified School District.

## FROM-TRUSTEE AREA ELECTIONS

Candidates must reside in specific geographic areas within the District's boundaries called "Trustee Areas" but are elected by all the voters who reside in the District's boundaries (Education Code Section 5030(c)).

## BY-TRUSTEE AREA ELECTIONS

Candidates must reside in specific Trustee Areas within the District's boundaries and are elected only by the voters who reside in the same Trustee Areas (Education Code Section 5030(b)). *This method of election is the only method that is safe from challenge under the California Voting Rights Act.*



# BACKGROUND

## WHAT IS THE CALIFORNIA VOTING RIGHTS ACT (“CVRA”)?

- Took effect January 1, 2003.
- Prohibits the use of “at-large” elections when such an election system:

*“impairs the ability of a protected class to elect candidates of its choice or its ability to influence the outcome of an election....”*

-(Elections Code §14027.)

- The Board has taken action to adopt a resolution initiating the transition from at-large to by-area elections.



# TRUSTEE AREA PROCESS

Date	Activity
May 16, 2019	<b>Board Meeting: School District Initiates Process to Transition to By-District Elections</b>
September 5, 2019	<b>Board Meeting: First Pre-Map Public Hearing and Presentation</b>
September 19, 2019	<b>Board Meeting: Second Pre-Map Public Hearing</b>
September – October 2019	Prepare Trustee Area Scenarios and Initiate Feedback on Waiver Request from Bargaining Units, DELAC, School Site Councils
October 7 and 8, 2019	Community input meetings
October 17, 2019	<b>Board Meeting: First Public Hearing on Trustee Area Scenarios</b>
November 7, 2019	<b>Board Meeting: Second Public Hearing on Trustee Area Scenarios Board Consideration of General Waiver Request Board Consideration of Change in Election Method</b>
November / December 2019	County Committee on School District Organization Holds a Public Hearing and Considers Approval of Change in Election Method and Trustee Area Map
January or March 2020	State Board of Education Meeting; Waiver Application Consideration
February or April 2020	Cooperative Strategies sends Final Trustee area Map to the County Registrar of Voters
November 2020	First Election Held Utilizing Trustee Areas



# COMMUNITY INPUT MEETINGS

- Review draft trustee area maps
- Provide feedback on maps
- Provide suggestions on changes or new scenarios
- Get answers to questions
- Open house format

Date	6:00 p.m. to 7:00 p.m.
<b>Monday October 7, 2019</b>	<b>DaVinci High School</b> Presentation Room 400 E. 8 <sup>th</sup> Street Davis
<b>Tuesday October 8, 2019</b>	<b>Davis High School</b> All Student Center 315 W. 14 <sup>th</sup> Street Davis



# CONSIDERATIONS IN TRUSTEE AREAS



Each area shall contain nearly equal number of inhabitants



Follow man-made and natural geographic features, as much as possible



Drawn to comply with the Federal Voting Rights Act



Respect incumbency, if possible



Compact and contiguous, as much as possible



Other local considerations (i.e., school boundaries, locations of school sites)

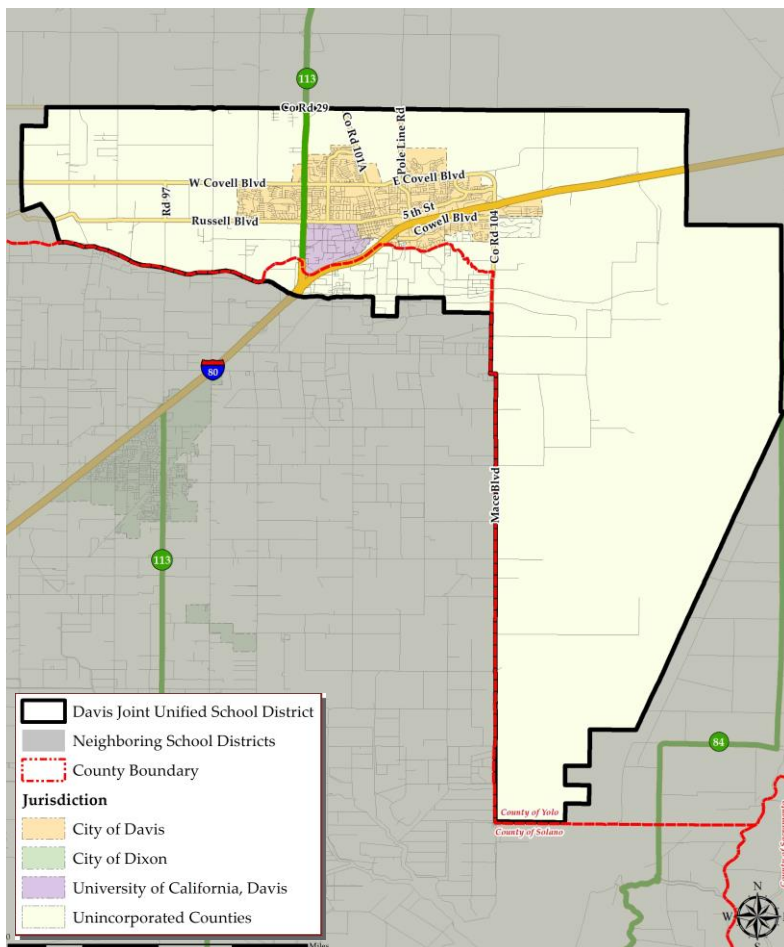


Respect communities of interest, as much as possible



# DISTRICT DEMOGRAPHICS

## 2010 CENSUS DATA



Population	Total Population		Age 18 and over	
	Total	%	Total	%
Hispanic/Latino	9,318	12.52%	7,186	11.46%
White	43,046	57.86%	36,499	58.19%
Black/ African American	1,572	2.11%	1,262	2.01%
American Indian/ Alaska Native	182	0.24%	151	0.24%
Asian	16,856	22.66%	15,231	24.28%
Native Hawaiian/ Pacific Islander	129	0.17%	122	0.19%
Other	210	0.28%	160	0.26%
Two or More Races	3,085	4.15%	2112	3.37%
<b>Total Population</b>	<b>74,398</b>	<b>100.00%</b>	<b>62,723</b>	<b>100.00%</b>

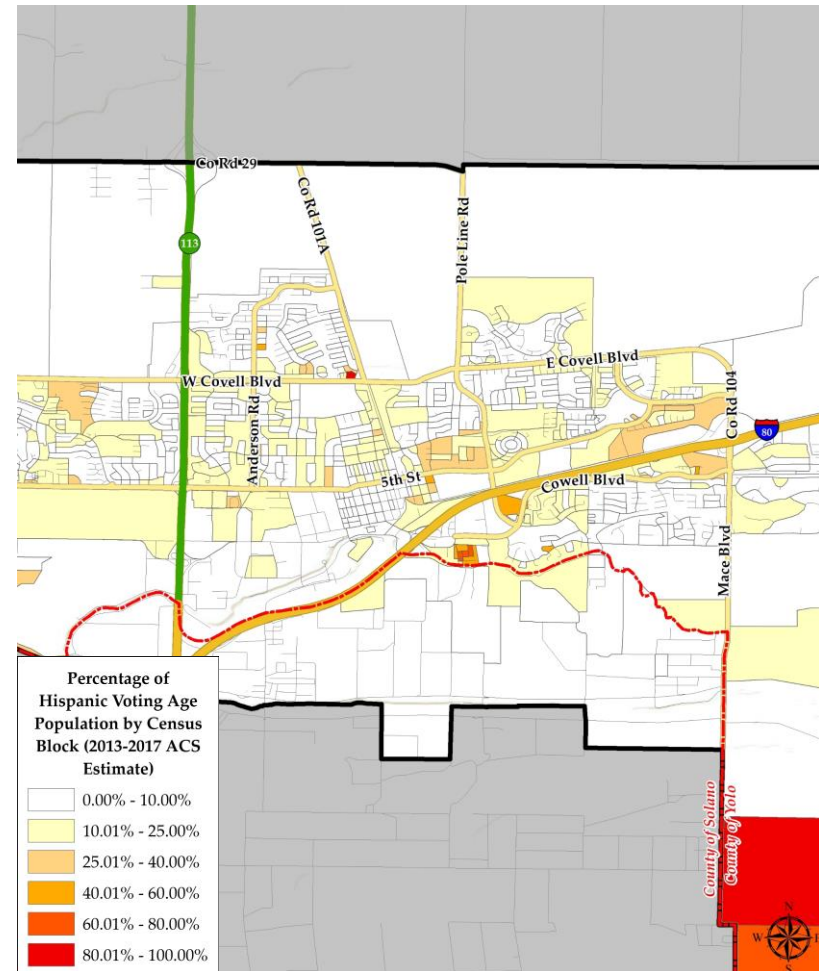




# DISTRICT DEMOGRAPHICS

## CITIZEN VOTING AGE POPULATION ESTIMATES

Population	2013-2017 CVAP	
	Total	%
Hispanic/Latino	7,447	12.84%
White	35,037	60.40%
Black/ African American	1,349	2.33%
American Indian/ Alaska Native	77	0.13%
Asian	11,554	19.92%
Native Hawaiian/ Pacific Islander	129	0.22%
Two or More Races	2412	4.16%
<b>Total Population</b>	<b>58,005</b>	<b>100.00%</b>



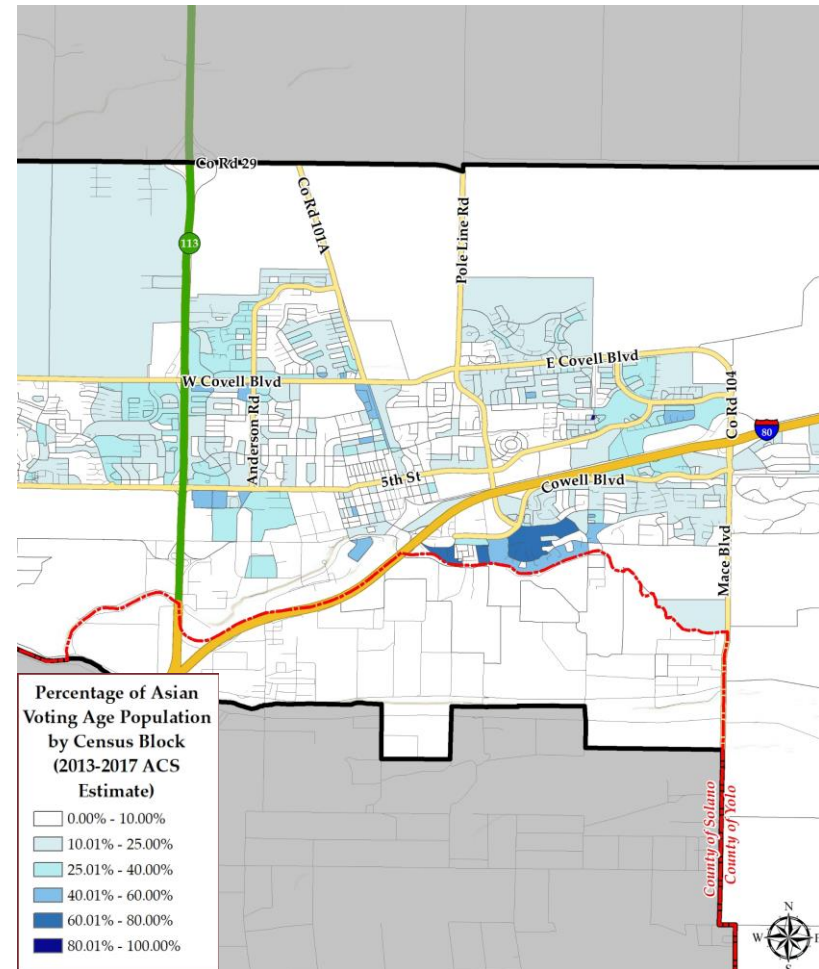




# DISTRICT DEMOGRAPHICS

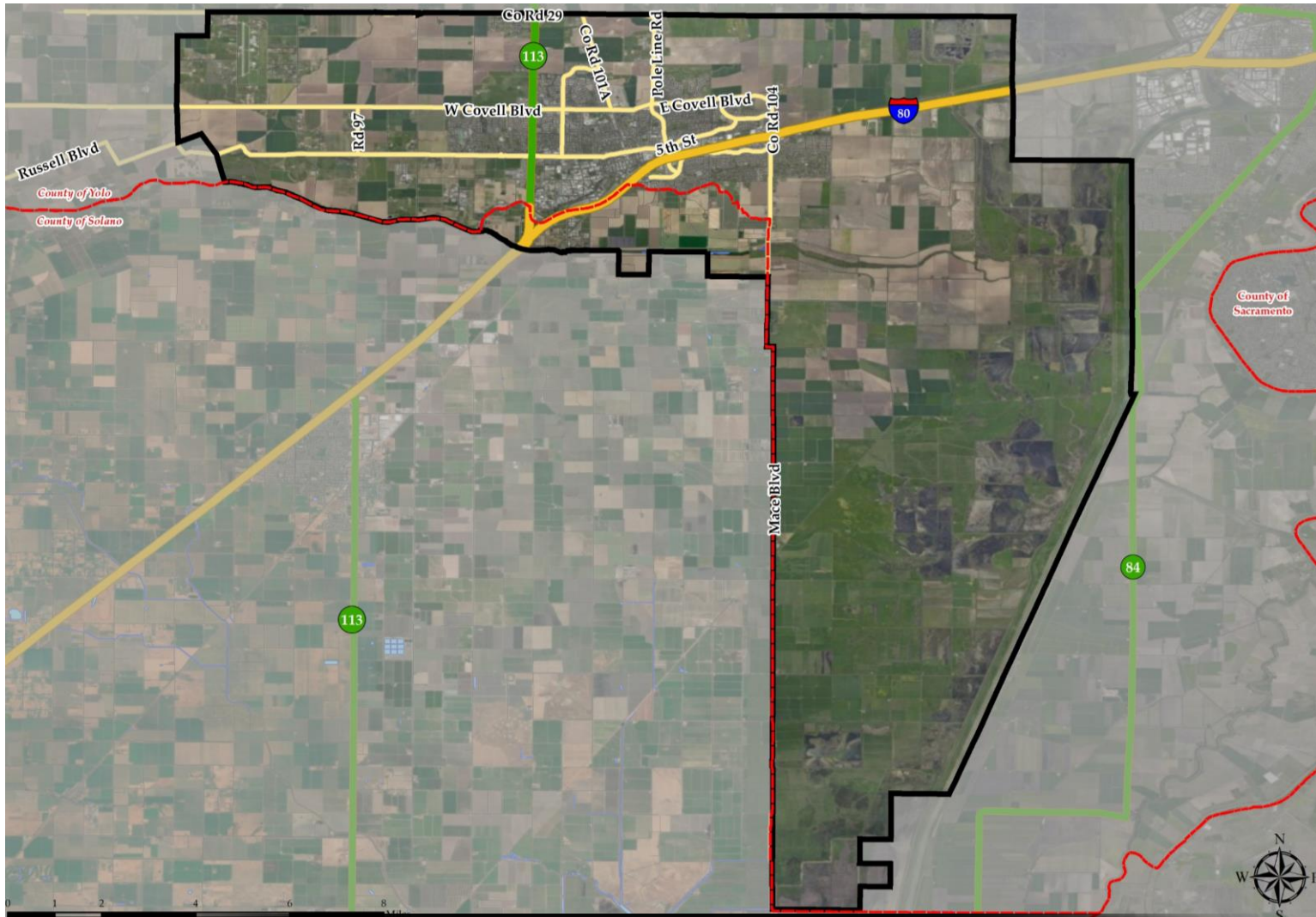
## CITIZEN VOTING AGE POPULATION ESTIMATES

Population	2013-2017 CVAP	
	Total	%
Hispanic/Latino	7,447	12.84%
White	35,037	60.40%
Black/ African American	1,349	2.33%
American Indian/ Alaska Native	77	0.13%
Asian	11,554	19.92%
Native Hawaiian/ Pacific Islander	129	0.22%
Two or More Races	2412	4.16%
<b>Total Population</b>	<b>58,005</b>	<b>100.00%</b>





# HOW SHOULD LINES BE DRAWN?





# PRE-MAP PUBLIC HEARING

## EXAMPLES OF FEEDBACK FOR MAPPING PROCESS

---

*“I would like to keep Neighborhood X and Neighborhood Y in the same trustee area...”*



# PRE-MAP PUBLIC HEARING

## EXAMPLES OF FEEDBACK FOR MAPPING PROCESS

---

*I think:*

- I-80
- Highway 113
- Russell Boulevard
- West Covell Boulevard

*... may make sense as a trustee area boundary because ...*

- It keeps communities together
- It provides good representation



# PRE-MAP PUBLIC HEARING

## EXAMPLES OF FEEDBACK FOR MAPPING PROCESS

---

### *I think:*

- All of Y community should be in one area
- Each elementary or middle boundary should be in multiple/single areas
- Every trustee area should serve multiple school boundaries/sites

### *... may make sense as a trustee area boundary because ...*

- It keeps communities together
- It provides good representation



# QUESTIONS