

DAVIS SR. HIGH SCHOOL

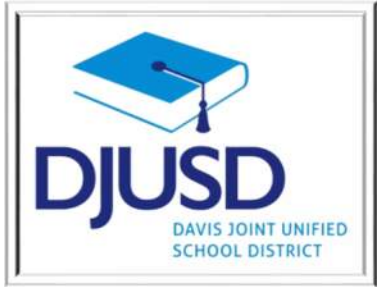
ALL-STUDENT CENTER (MULTIPURPOSE BUILDING)

DESIGN DEVELOPMENT UPDATE

April 21, 2016



MISSION STATEMENT



“The All-Student Center will be the center for student life creating space for community building, celebration, and collaboration.”

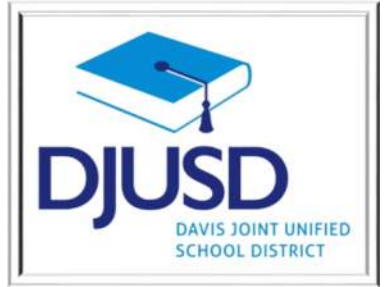
(DHS Stakeholder Team)

Have we achieved this?



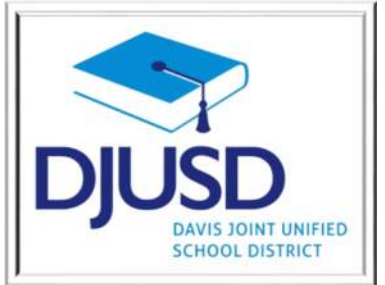
**DHS Stakeholder Committee
Programming Meeting #2
5/14/15**

APPROVED PROGRAM



- How have we met our mission statement?
 - Program Use Areas
 - Student Center – Multi-purpose space
 - Kitchen/Servery & Café
 - Student Career Center & Collaboration Area
 - Full Classroom Area / ASB Home
 - School's Finance Office
 - Outdoor Spaces

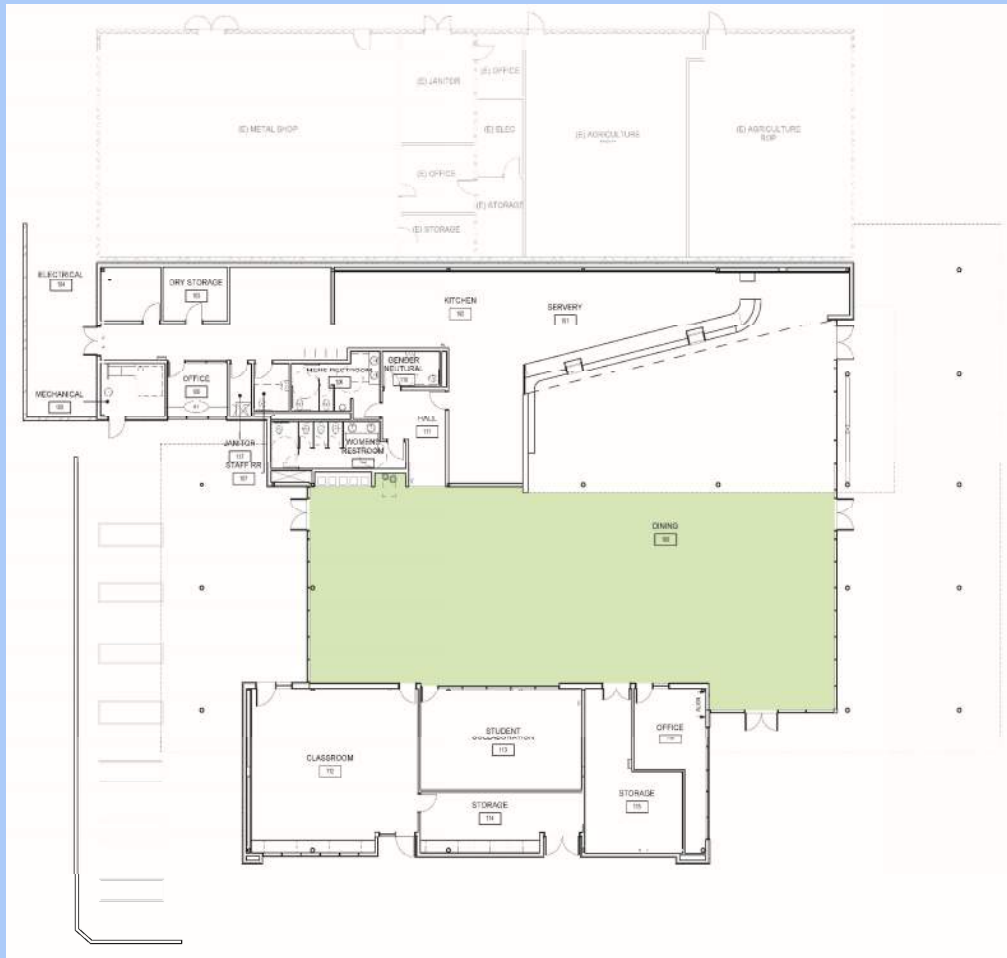
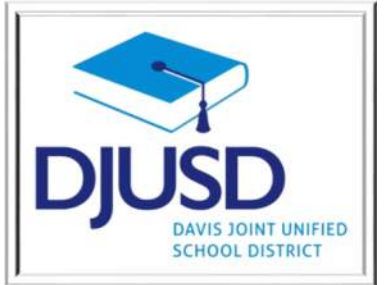
APPROVED PLAN



PROGRAM AREAS

- Student Center
- Servery & Café
- Career Center / Collaboration Area
- Classroom / ASB
- Finance Office
- Outdoor Plazas

APPROVED PLAN



PROGRAM AREAS

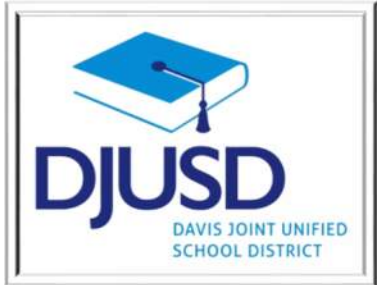
- Student Center
- Sery & Café
- Career Center / Collaboration Area
- Classroom / ASB
- Finance Office
- Outdoor Plazas

RENDERING OF NEW ASC



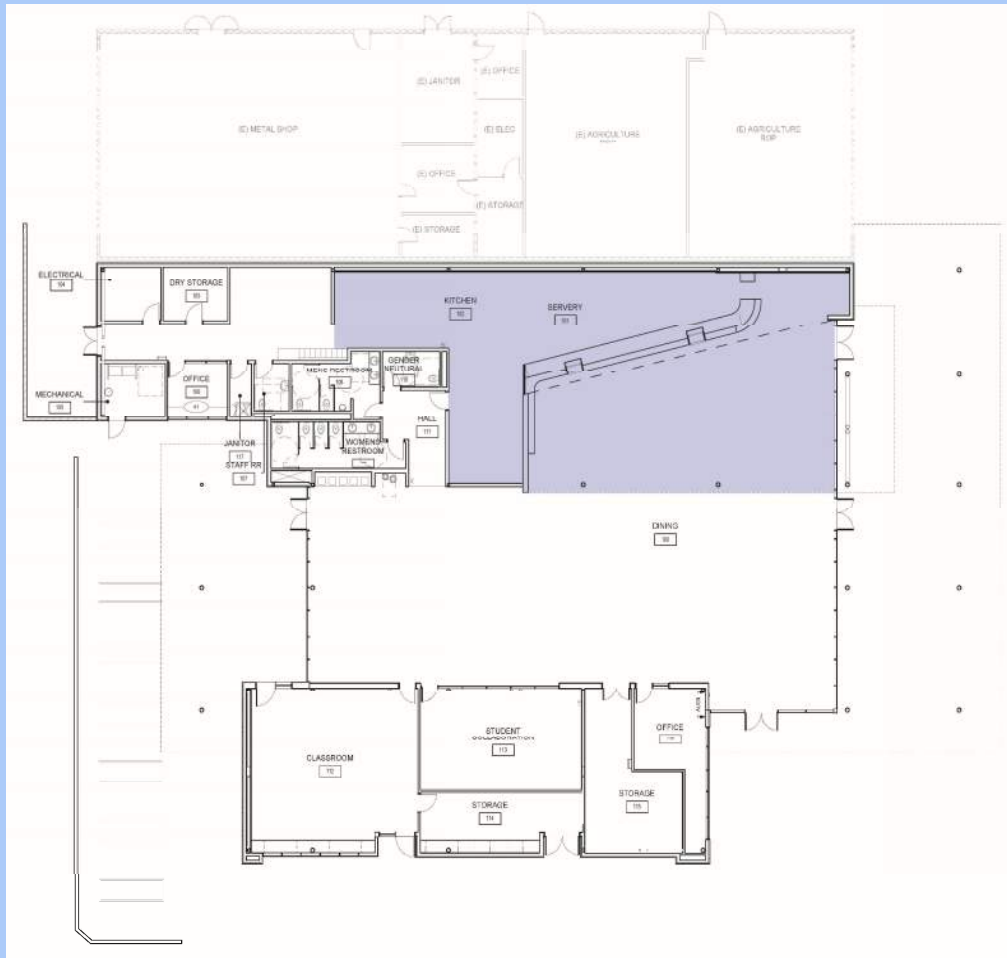
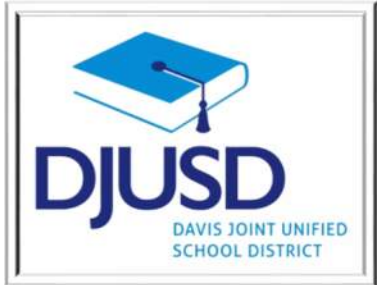
VIEW FROM INTERIOR

RENDERING OF NEW ASC



VIEW FROM INTERIOR

APPROVED PLAN



PROGRAM AREAS

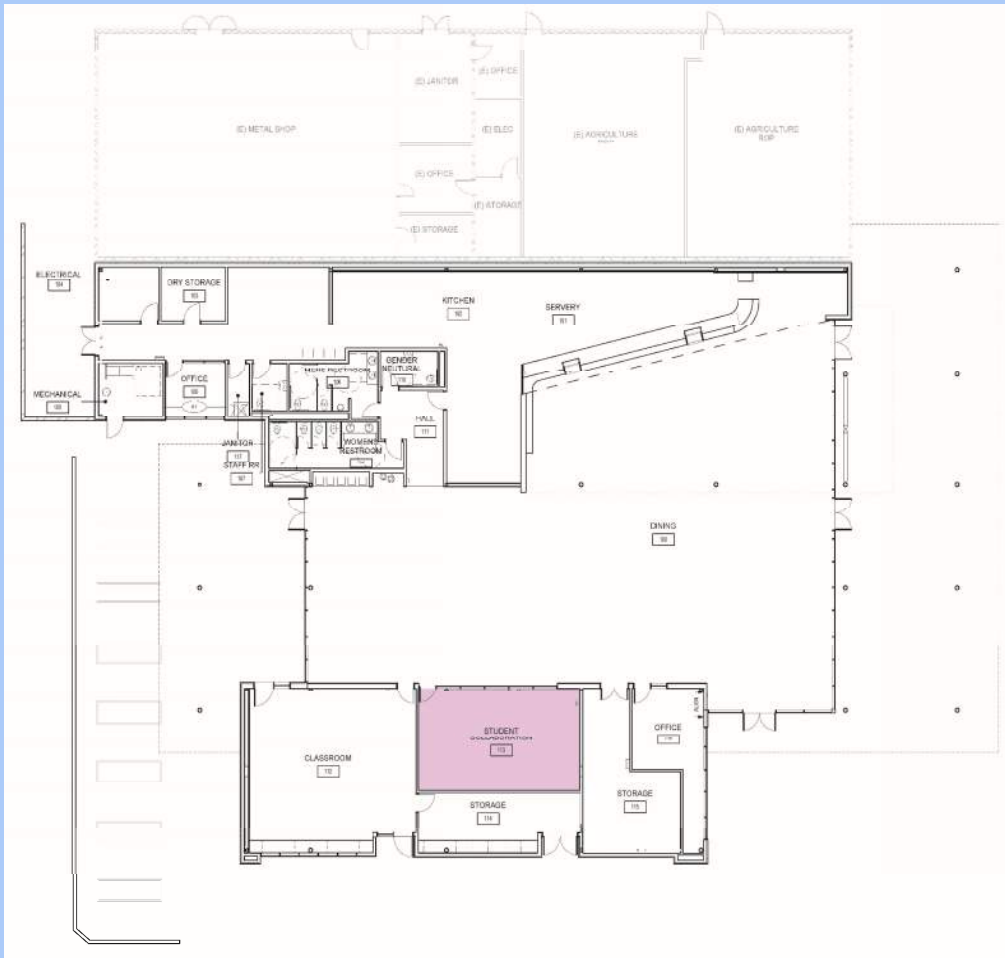
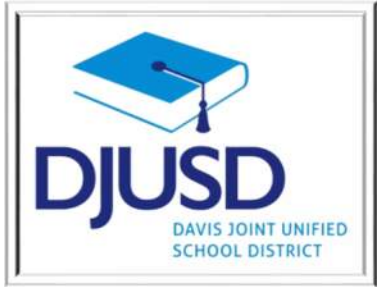
- Student Center
- Servery & Café
- Career Center / Collaboration Area
- Classroom / ASB
- Finance Office
- Outdoor Plazas

RENDERING OF SERVERY



VIEW FROM INTERIOR

APPROVED PLAN



PROGRAM AREAS

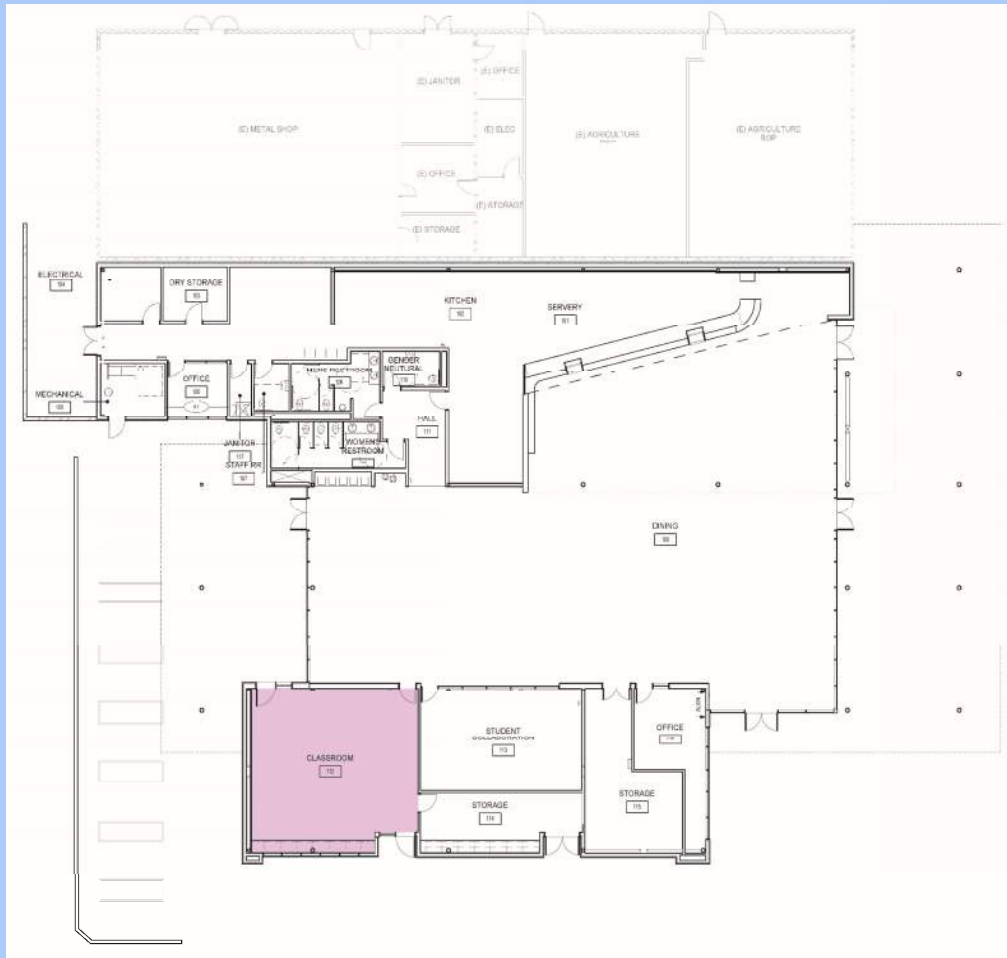
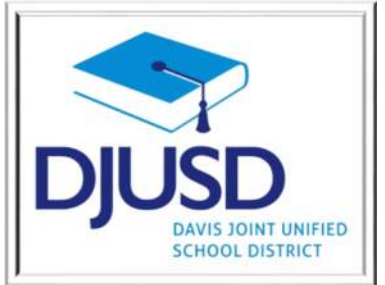
- Student Center
- Servery & Café
- Career Center / Collaboration Area
- Classroom / ASB
- Finance Office
- Outdoor Plazas

PERSPECTIVE OF CAREER CENTER



VIEW FROM INTERIOR

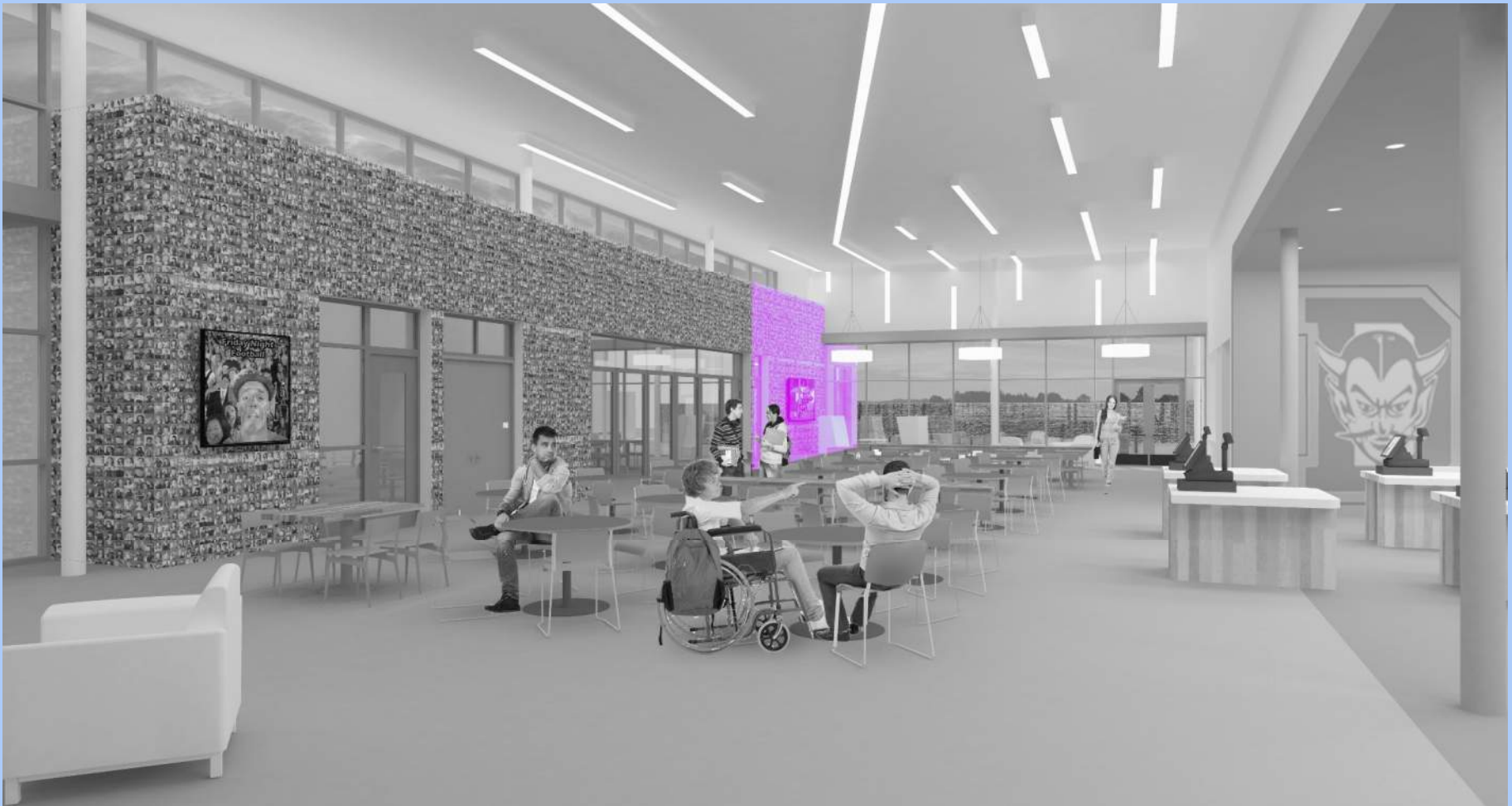
APPROVED PLAN



PROGRAM AREAS

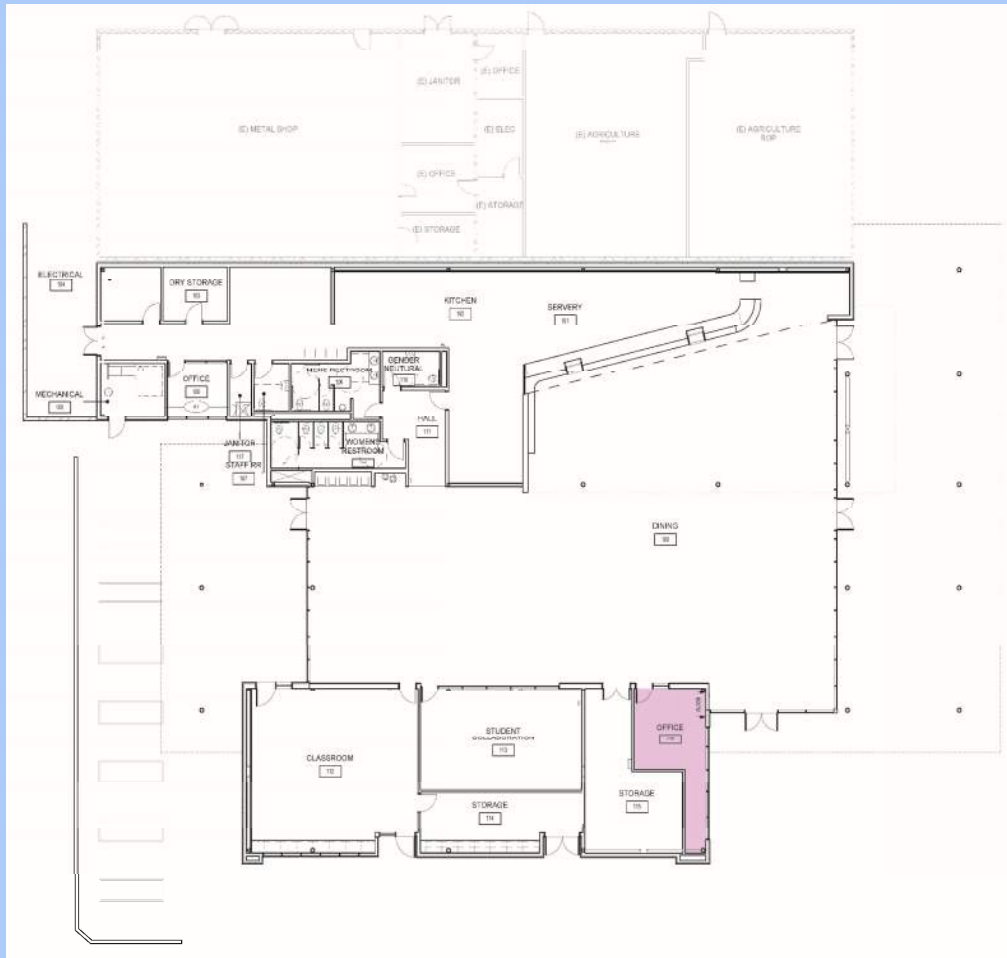
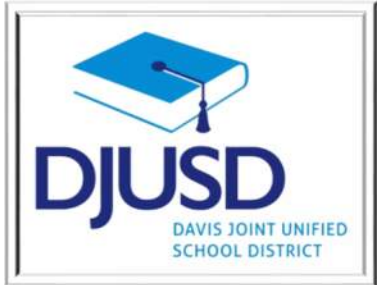
- Student Center
- Sundry & Café
- Career Center / Collaboration Area
- Classroom / ASB
- Finance Office
- Outdoor Plazas

PERSPECTIVE OF CLASSROOM



VIEW FROM INTERIOR

APPROVED PLAN



PROGRAM AREAS

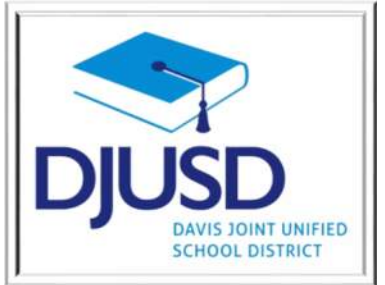
- Student Center
- Sundry & Café
- Career Center / Collaboration Area
- Classroom / ASB
- Finance Office
- Outdoor Plazas

PERSPECTIVE OF OFFICE



VIEW FROM INTERIOR

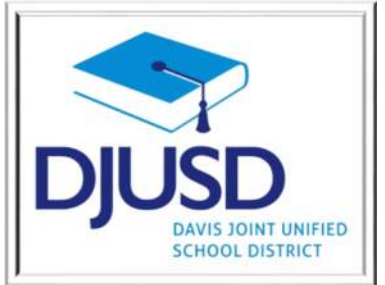
APPROVED PLAN



PROGRAM AREAS

- Student Center
- Served & Café
- Career Center / Collaboration Area
- Classroom / ASB
- Finance Office
- Outdoor Plazas

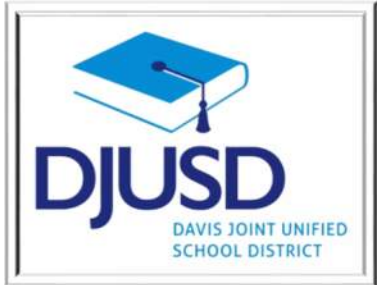
FOOD SERVICE UPDATE



- **Student Nutrition Services / ASC Design Process Update**
 - Continued Refining Operational Flow
 - Visited UC Davis
 - Held 2 Meetings with Design Team and Food Service Consultant
 - Discussed Interim solutions

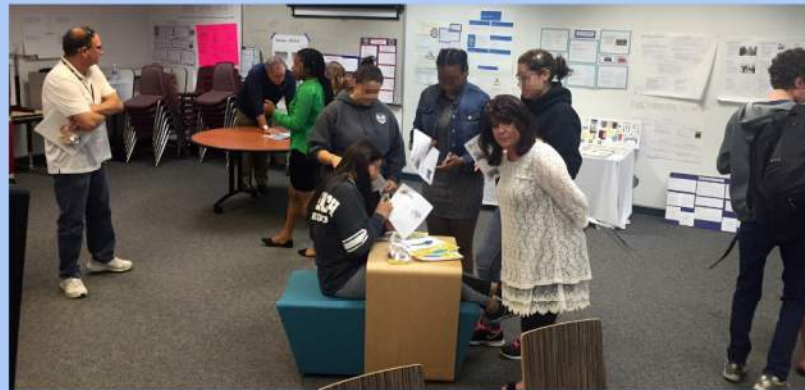


FURNITURE FAIR

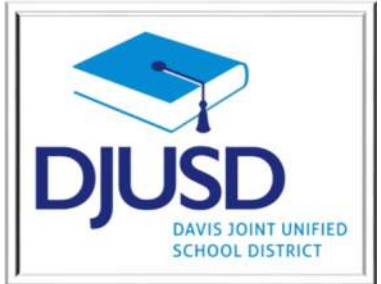


A total of 236 participants
over 4 days

198 Students
38 Staff Members



FURNITURE FAIR



Method: We asked each participant to answer three questions for each of the furniture pieces shown.

- 1) Would you chose to sit here?
- 2) Does it look like it belongs at our campus?
- 3) Would you like to see the furniture in a hangout spot?

They ranked each answer on a scale of 1-5 with 5 being the best. Participants were also asked to provide one word to describe the furniture piece.

Results: The students responded the most to the soft lounge chair options. The high back chair was the clear favorite, with attached writing surfaces, and integrated power receiving high marks. Common words used as discriptors: "Awesome, comfy, sick, modern, need"



Average score 4.7



Average score 4.6



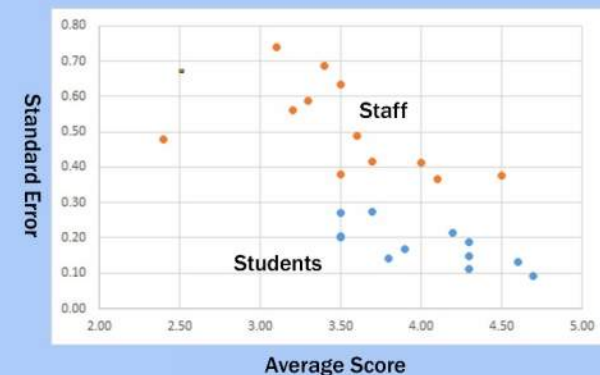
Average score 4.3



Average score 4.3

Interesting Trends: The students as a group ranked their favorite furniture pieces with a much higher consistency than the staff. With these statistics we can confidently say that a high percentage of the student population would like to see the top five ranking chairs in the All Student Center.

Standard Error looks at the range of scores and the closer to zero means the least amount of variance in score.



VIRTUAL REALITY TOUR OF NEW ASC

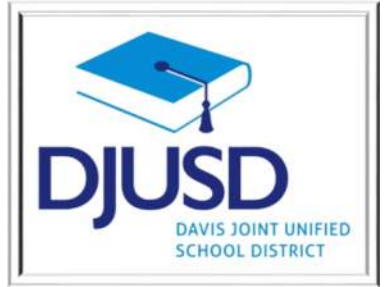


INDOOR VR TOUR



OUTDOOR VR TOUR

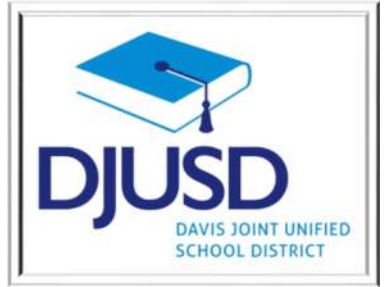
PROJECT BUDGET



- **Total Project Funding \$7.2M – Sources**
 - Grande Property Sale - \$5.5M
 - COPS - \$1.7M

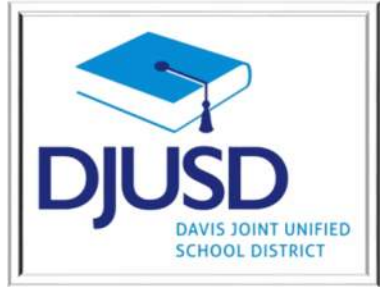
- **Total Project Cost (Estimated) \$ 7.3M**
 - Total Estimated Hard Construction - \$ 4.7M
 - Contractor General Conditions/Profit - \$ 596K
 - Design Contingency - \$ 444K
 - Project Escalation (5%) - \$ 227K
 - Soft Costs (Architect Fee, Reports, DSA) - \$ 692K
 - Project Contingency (10%) - \$ 472K
 - Fixed Furniture - \$ 174K

PROJECT SCHEDULE



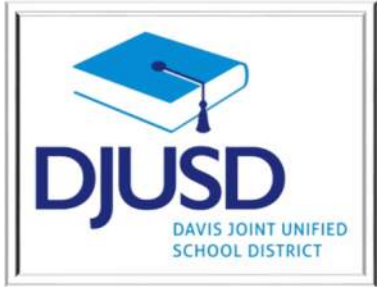
■ June 25, 2015	Programming Presentation
■ August 6, 2015	Final Program/Budget Options
■ January 7, 2016	District Approves Final Design
■ April 26, 2016	Submittal to DSA
■ August 19, 2016	DSA Approval
■ August – Sept 2016	Project Out to Bid
■ September 2016	Contracts
■ October 3, 2016	District Approves Bid (NTP)
■ October 2016 – Sept. 2017	Construction Activities
■ August 2017	Project Complete

NEXT STEPS



- **Continue Construction Documents – Submit to DSA**
- **Refine Budget to Scope to Achieve Project Budget**
- **Submit Applications for Supplemental Funding**
- **Establish Pre-Qualifications Criteria – Contractors**
- **Develop Specific Design Elements – FF&E**
- **Develop Facility Use Program**

QUESTIONS



QUESTIONS AND COMMENTS