

SHEET NOTES

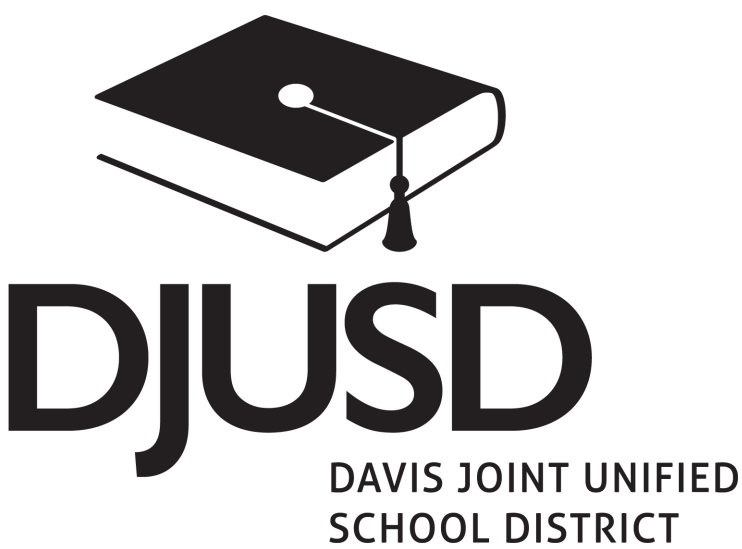
A. REFER TO AS-BUILT MECHANICAL DRAWINGS FOR DETAILS ON EXISTING SYSTEM.

KEYED NOTES

1. CONNECT TO EXISTING DIFFUSER. REBALANCE TO 250 CFM.
2. REPLACE EXISTING 48X60 WINDOW. NEW WINDOW PERFORMANCE MINIMUMS: U=0.36, SHGC=0.25.
3. REMOVE EXISTING TWIN FAN COIL UNITS SERVING OFFICE AREA. REPLACE W/ NEW.
4. REMOVE EXISTING 5-TON OUTDOOR CONDENSING UNIT AND REFRIGERANT PIPING SERVING OFFICE AREA. REPLACE W/ NEW.
5. ALL OFFICE DUCTWORK TO BE REPLACED. REFER TO BOD FOR SIZING. OUTSIDE AIR DUCT TO REMAIN.
6. ADJUST LOCATION OF EXISTING 7.5-TON CONDENSING UNIT AS NEEDED TO FIT NEW UNIT IN ENCLOSURE.
7. ALTERNATE HORIZONTAL FAN COIL LOCATION, LOCATED IN THE CEILING.
8. RECOMMENDED CONCRETE PAD.
9. 18X8 TITUS 300 DOUBLE DEFLECTION SUPPLY AIR DIFFUSER MOUNTED ON EXPOSED DUCT. PROVIDE DAMPER AND BALANCE TO 410 CFM.
10. 36X20 TITUS 350 35 DEGREE DEFLECTION RETURN AIR GRILLE.

Issue	Date	Description
1	02/05/2016	HVAC OPTIONS
2	02/22/2016	SCHEMATIC DESIGN

Project No. 16-10



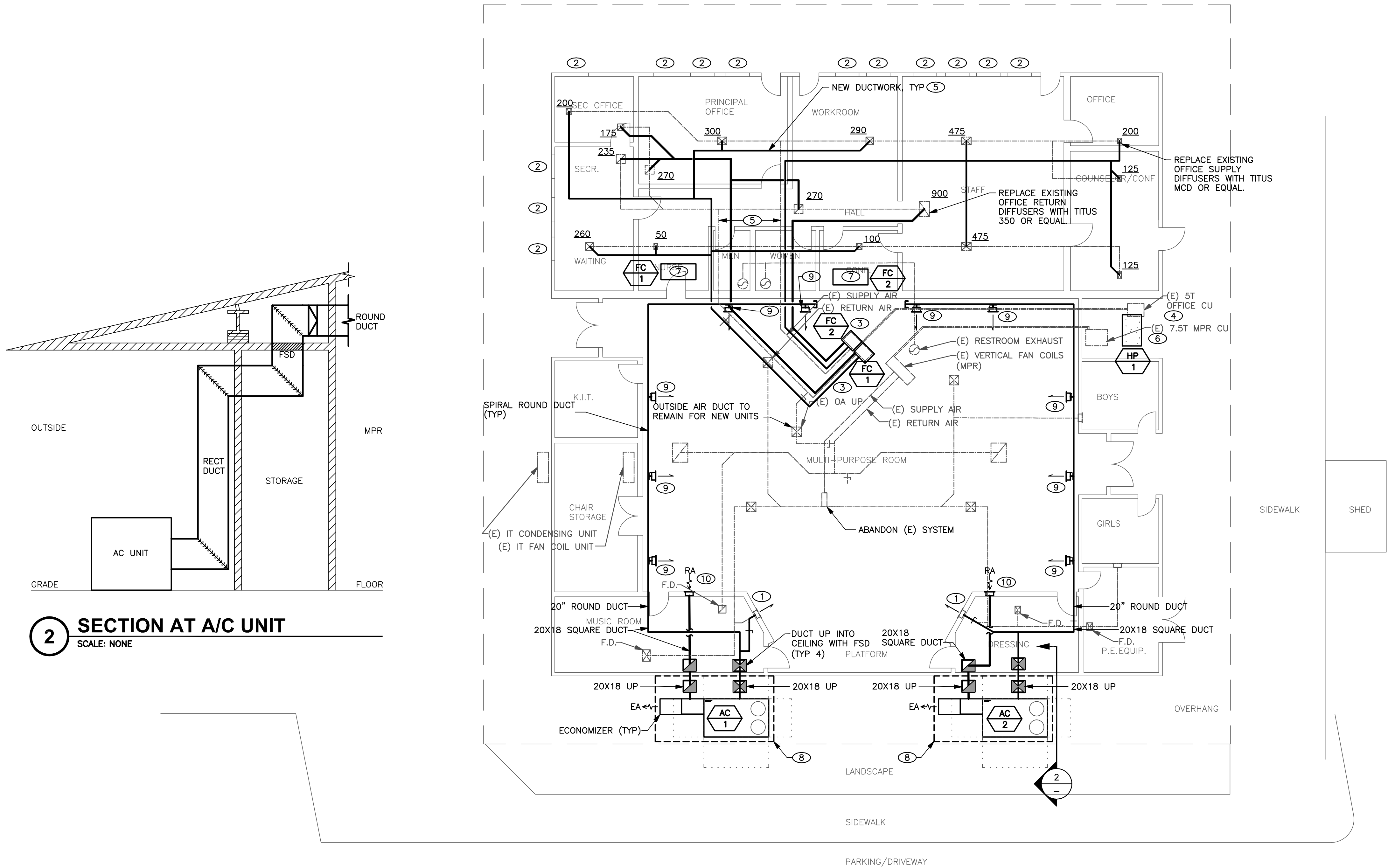
FACILITY NAME  
WILLETT ELEMENTARY SCHOOL  
12007 SYCAMORE LN, DAVIS, CA 95616

OWNER NAME  
DAVIS JOINT UNIFIED SCHOOL DISTRICT  
1919 5TH STREET  
DAVIS, CA 95616  
530-759-2182

SHEET TITLE  
MECHANICAL HVAC PLAN  
OPTION 1

SCALE: AS NOTED  
DATE: SHEET NUMBER

M2.1



1 MECHANICAL HVAC PLAN - OPTION 1  
SCALE: 1/8"=1'-0"

