

CONTRACT NAME: AGREEMENT BETWEEN MUSIC FESTIVALS AND TOURS AND DAVIS JOINT UNIFIED SCHOOL DISTRICT

BRIEF DESCRIPTION OF CONTRACT: This is an agreement between DJUSD and Music Festivals and Tours to plan, coordinate and escort the Davis Senior High School Advanced Treble Choir to Hawaii from June 23, 2016 – June 28, 2016. (This trip will replace the trip to Ireland which was Board approved on December 17, 2015.)

Arrangements will include all transportation, accommodations, event tickets and some meals. The trip will provide an opportunity for students to work with the University of Hawaii. They will perform for audiences at the USS Missouri and for veterans and active military as well as participating in performances with local community choirs.

The costs for the trip will be \$53,695 and will be paid by donations and fund raisers.



CONTRACT

DAVIS HIGH SCHOOL ADVANCED TREBLE CHOIR HAWAII PERFORMANCE TOUR June 23-28, 2016

This contract is between MUSIC FESTIVALS & TOURS, P.O. Box 4579, Reading, PA 19606 / 6 Industrial Drive, Birdsboro, PA 19508 and Davis High School Advanced Treble Choir. Phone numbers are 1-800-545-0935 and 610-898-1844. Our 24 hour emergency contact number is 610-568-5671.

MUSIC FESTIVALS & TOURS has been selected to plan, coordinate, and escort a trip to Hawaii from June 22-28, 2016. In addition to all tour arrangements, MUSIC FESTIVALS & TOURS will provide the following:

TRANSPORTATION

- Roundtrip coach airline flight on Hawaiian Air from Sacramento to Honolulu

ACCOMMODATION – 5 NTS

- Hotel in Honolulu across from Waikiki Beach.

MOTORCOACH, PROFESSIONAL GUIDES & TOUR ESCORT

- Luxury motor coach transportation during the tour in Hawaii
- Professional tour guides for sightseeing tours as noted.

ADMISSIONS/VISITS

- Pearl Harbor, USS Arizona Memorial, USS Missouri, Hilo Hattie, Eastern Shores Circle Island Tour including Diamond Head, Beverly Hills of Hawaii, Pali Lookout, Authentic Hawaiian Luau

BREAKFAST/LUNCH/DINNERS

- Breakfasts (5) each morning at hotel
- Lunch (1) Deli Style Lunch in Pearl Harbor
- Dinners (5) Pizza Party at hotel, Japanese Style Dinner, Authentic Hawaiian Luau, Beach BBQ, Sunset Dinner Cruise

PERFORMANCES/WORKSHOPS

- Workshop at the University of Hawaii
- Workshop at location TBD
- Patriotic Concert at the pier of the USS Missouri,
- Perform for Veterans and Active Military in the Hale Koa Atrium
- Performance at local church
- Performance with local community choir
- Performance at Luau

OTHER

- One (1) complimentary package for the Director
- One (1) complimentary chaperone package for every twenty-five (25) paid students
- MUSIC FESTIVALS & TOURS Escort during your tour.
- Service fees, gratuities and taxes
- Baggage tags for each participant
- \$2,000,000 Professional Liability Insurance Coverage and \$200,000 SYTA Consumer Protection Plan carried by MUSIC FESTIVALS & TOUR

PRICING



CONTRACT

Pricing for all inclusions listed on this contract is:

Student Quad - \$1,800.00	Adult Double - \$2,099.00
Student Triple - \$1,895.00	Adult Single - \$2,419.00

The Financial Payment form reflects the number of participants in your group placed in **Quad** occupancy for students and **Double** occupancy for adults. **There is an additional charge for adults in single rooms.** When we receive your final rooming list, we will calculate your final cost based on the rooms as listed and send you an invoice for any additional charges.

MUSIC FESTIVALS & TOURS will provide every service and inclusion listed in the Package Plan above and will at all times act in the best interest of the Davis High School Advanced Treble Choir and Davis High School.

DEPOSITS AND PAYMENTS:

- Deposit of \$600 per person will be due by March 4, 2016
- 2nd payment of \$600 per person will be due by April 18, 2016.
- Final Balance will be due by May 20, 2016.

CANCELLATIONS AND REFUND POLICY:

Since the operation of performance tours requires extensive long-term planning, costs and deposits are incurred long before the actual departure. Keeping this and the interest of our participants in mind, MUSIC FESTIVALS & TOURS has prepared the following cancellation/refund policy:

INDIVIDUAL OR GROUP CANCELLATION

- The initial deposit is NON-REFUNDABLE
- Before April 18, 2016: Full refund with the exception of the initial deposit of \$600.
- Between April 19 and May 20, 2016: a \$1,200 per person cancellation fee plus any deposits made on participant's behalf to hotels, restaurants, special attraction admissions, transportation carrier, or tickets that are not refundable.
- After May 20, 2016 there will be NO REFUNDS.

Disclosure Notice:

MUSIC FESTIVALS & TOURS acts only as agents for the passenger in regard to travel whether by railroad, motor coach, boat, or airplane, and assumes no liability for injury, damage, loss, accident, delay or irregularity which may be occasioned by reason of defect in any vehicle, or any company or person engaged in conveying the passenger, or in carrying out the arrangements of the tour. The right is reserved to make adjustments to the itinerary. Baggage and personal injury are at passenger's risk entirely. Acceptance of voucher or tickets shall be deemed to be consent of the above conditions

Curfew hours and smoking privileges will be established by individual school officials or by the head chaperone/group leader. Drinking of alcoholic beverages and use of drugs by students are strictly prohibited.



CONTRACT

ADDITIONAL DOCUMENTATION:

Staff Qualifications:

- Dennis Rhoads is the Owner and President of MUSIC FESTIVALS & TOURS. He received his B.S. Degree in Music Education from West Chester University, Pennsylvania in 1973. He served On the Music Department Staff at Great Valley School District, Malvern, PA from 1974-1980. He started his own company offering educational music tours in 1980 and has been providing tours for thousands of high school and college/university choirs, bands and orchestras ever since.
- Ronald Simmons is the Executive Director of MUSIC FESTIVALS & TOURS. He received his B.S. Degree in Music Education from Western Carolina University and his M.S Degree from Ball State University. He served as Director of Instrumental and Choral Music at Lee Davis High School, Virginia for 12 years before joining MUSIC FESTIVALS & TOURS.

Both Dennis Rhoads and Ronald Simmons serve as Tour Escorts for the international tours that we coordinate.

Information Provided:

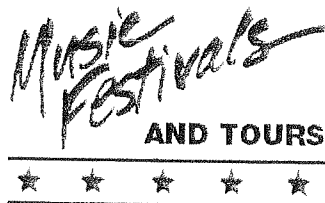
- An attachment is included with the Itinerary and Package Plan that will be provided to all students, staff, chaperones and parents regarding the inclusions and all that will take place on the trip.
- A complete detailed Final Itinerary with specific information on each destination will be provided prior to the trip departure.

Past Tour Schools/References:

- A partial list of references from past school groups is attached. MUSIC FESTIVALS & TOURS works with over 350 high school, junior high/middle schools and college/university choirs, bands and orchestras each year. While we sponsor various festivals and competitions, we serve as the Tour Coordinators for dozens of school groups every year that travel internationally. This provided list is a small number of the many international tours we have sponsored over the past 30+ years.

Company Owner

- Dennis G. Rhoads is the owner of MUSIC FESTIVALS & TOURS. He is 64 years old, well respected and has been providing international tours and travel for 30+ years. His home address is 49 Scotland Drive, Reading, PA 19606. His office is located at 6 Industrial Drive, Birdsboro, PA 19508. His cell phone is 610-568-5671. He has never been charged with a crime and has never been investigated or charged with any violations regarding travel services of any kind.



CONTRACT

The tour participant agrees that neither MUSIC FESTIVALS & TOURS nor its affiliates shall be liable for any damage, loss (including personal injury, death and property loss) or expenses occasioned by any act or omission of any supplier providing tour services or of any other person. No person, other than an authorized representative of the MUSIC FESTIVALS & TOURS by a document in writing, is authorized to vary, add or waive any term or condition in this contract including any term or condition set forth in the preceding provisions.

All baggage and personal effects are at all times and in all circumstances "at owners risk" throughout the tour. Small articles (coats, cameras, umbrellas, etc.) are entirely in the care of the passengers. Upon return from the tour, if lost articles are found and returned, MUSIC FESTIVALS & TOURS has the right to charge a shipping cost.

This package plan and tour planning is contingent upon the ability of MUSIC FESTIVALS & TOURS to perform these duties as outlined and is subject to strikes, acts or declarations of war, labor disputes, acts of God or other causes beyond its control, and if any such event shall occur, MUSIC FESTIVALS & TOURS shall not be liable.

MUSIC FESTIVALS & TOURS has the right to pass on any fuel surcharges imposed by any transportation carrier (ground or air) due to strike, embargoes, recession, or foreign influence. Any fees imposed by the airlines for luggage and instrument transport will be additional and not part of the quoted package price.

Both parties agree that a faxed, signed version of this contract is valid.

Dennis Rhoads

MUSIC FESTIVALS & TOURS

Date

Bruce Colby

Davis High School

Date



Package Plan

DAVIS HIGH SCHOOL ADVANCED TREBLE CHOIR HAWAII TOUR PROPOSAL

June 23 – 28, 2016
6 Days/5 Nights

Student Quad
\$1,800 pp

Adult Double
\$2,099 pp

PACKAGE PLAN INCLUDES:

ACCOMMODATION – 5 NTS

- Hotel in Honolulu across from Waikiki Beach.

MOTORCOACH, PROFESSIONAL GUIDES & TOUR ESCORT

- Luxury motor coach transportation during the tour in Hawaii
- Professional tour guides for sightseeing tours as noted.

ADMISSIONS/VISITS

- Pearl Harbor, USS Arizona Memorial, USS Missouri, Hilo Hattie, Eastern Shores Circle Island Tour including Diamond Head, Beverly Hills of Hawaii, Pali Lookout, Authentic Hawaiian Luau

BREAKFAST/LUNCH/DINNERS

- Breakfasts (5) each morning at hotel
- Lunch (1) Deli Style Lunch in Pearl Harbor
- Dinners (5) Pizza Party at hotel, Japanese Style Dinner, Authentic Hawaiian Luau, Beach BBQ, Sunset Dinner Cruise

PERFORMANCES/WORKSHOPS

- Workshop at the University of Hawaii
- Workshop at location TBD
- Patriotic Concert at the pier of the USS Missouri,
- Perform for Veterans and Active Military in the Hale Koa Atrium
- Performance at local church
- Performance with local community choir
- Performance at Luau

OTHER

- One (1) complimentary package for the Director
- One (1) complimentary chaperone package for every twenty-five (25) paid students
- MUSIC FESTIVALS & TOURS Escort during your tour.
- Service fees, gratuities and taxes
- Baggage tags for each participant
- \$2,000,000 Professional Liability Insurance Coverage and \$200,000 SYTA Consumer Protection Plan carried by MUSIC FESTIVALS & TOURS



Itinerary

DAVIS HIGH SCHOOL ADVANCED TREBLE CHOIR HAWAII PERFORMANCE TOUR

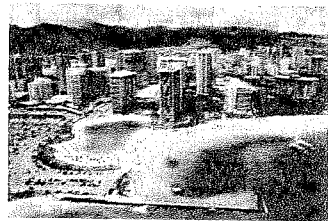
June 23 – 28, 2016

6 Days/5 Nights

THURSDAY, JUNE 23

Departure/Aloha and Welcome To Hawaii

You will depart from Sacramento International Airport on Hawaiian Airlines flight #19 at 7:00 am for Hawaii and upon arriving at Honolulu International Airport, you will be greeted with a Traditional Flower Lei and your Tour Escort. Luggage will be collected and we'll load our chartered bus and we'll be off to see the beauty of the islands. Your **Eastern Shores Circle Island Tour** will start around **Diamond Head**, Hawaii's most famous landmark and into the **Beverly Hills of Hawaii** on to the Blowhole where water can spout hundreds of feet in the air and then to the **Pali Lookout** where wind can blow so strong you can almost fly. We'll make a stop where you can purchase lunch and do some shopping. Later this afternoon we'll arrive at our **Waikiki Hotel**. The Hotel has inside corridors with chaperones intermingled between. Key packets will be ready upon our arrival and porters will deliver luggage. *(Private security can be arranged to make sure everyone has a great night sleep including the chaperones.)*

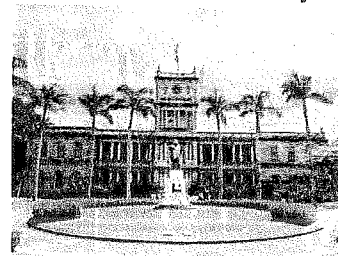


Tonight we will have a **Pizza Party** with your local Tour Director. This will include an informative briefing to go over hotel rules, local area shopping and safety. **(D)**

FRIDAY, JUNE 24

Workshop/Wiki Wacky In Waikiki/Beach BBQ

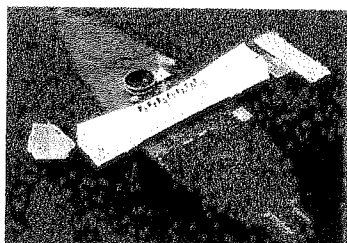
Breakfast will be served at your hotel. This morning you will depart for a **Musical Workshop** at the **University of Hawaii School of Music**. Students will have the opportunity to work with University of Hawaii faculty and staff to increase their skills as musicians from collegiate level instructors. This afternoon we'll schedule a special **Performance** for the choir. Later we'll head back to your hotel for some free time. Tonight is your chance to get Wiki Wacky in Waikiki. You'll be separated into teams with chaperones, given a treasure map, clue sheet and a dinner allowance. Now it's off to scavenger Waikiki, gaining knowledge of its history and culture. Tonight you'll say Aloha as you Hang Loose watching the sun drop off into the Pacific at your own **Beach BBQ with Hawaiian flare**. We will also announce the winner of the Wiki Wacky Scavenger Hunt with a truly Authentic Hawaiian Trophy. **(B, D)**



SATURDAY, JUNE 25

Pride Of The USA

Breakfast will be served at your hotel. Depart for **Pearl Harbor** and the **USS Arizona Memorial**. Today you will learn one of our country's most valuable history lessons: how men and women gave their lives on December 7, 1941 "The Day of Infamy". Today's experience will make you proud to be an American and thankful for the freedoms we enjoy today. Information on the USS Arizona Memorial's "Witness to History" program can be found at www.pearlharbormemorial.com. Now that you have seen the reason for the United States' entry into WWII, let's go see the end. You will eat your **Deli Style Lunch** under large Chinese Banyan Trees with a spectacular view of one of our country's famous war ships, **The USS Battleship Missouri**. Upon finishing lunch, your group will have the chance to represent your hometown as you present a **Performance** on the pier of the "Mighty Mo". After your performance, enjoy touring this enormous ship and walk on the surrender deck where General MacArthur signed the treaty to end WWII in Tokyo Bay.



Music Festivals

Itinerary

SATURDAY, JUNE 25 (cont.)

Pride Of The USA

We might not have the International Marketplace in Waikiki but we still have the "Store of Hawaii"! A stop at **Hilo Hattie** has become synonymous with vacation shopping; here you can pick up the latest Aloha Attire, Hawaiian Souvenirs and T-Shirts. Shoots as we say in Hawaii, even Elvis wore Hilo Hattie Aloha Shirts. Now it's time to entertain our Military with an "**Aloha Kokua Mission**". Kokua in Hawaiian means to do something good and this will be your opportunity by visiting and **Performing for Active Military and Veterans** visiting Hawaii at the **Hale Koa Atrium**.



Seeing as Hawaii is a cultural melting pot, tonight you're going to learn how to **dine Japanese style**. You will sit in tables of 10 as your Teppanyaki Chef prepares Japanese Steakhouse beef and chicken right before your very eyes. Your group can cheer him on as flames fly to the ceiling. Return to the hotel for an evening on your own. (B, L, D)

SUNDAY, JUNE 26

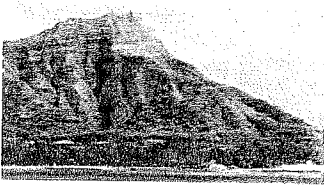
Performance/Luau

Breakfast will be served at your hotel. This morning we will make arrangements to **Perform** at one of the local churches during and following the service. This afternoon we will schedule a combined **Performance** with one of Honolulu's community choirs. This evening we'll attend an **Authentic Hawaiian Luau** where you will be doing the hula, enjoying traditional Hawaiian foods, music, entertainment and gracious island hospitality. The opportunity will also be available to present a short **Performance**. (B, D)

MONDAY, JUNE 27

Workshop/Diamond Head/Dinner Cruise

Breakfast will be served at your hotel. This morning we will have our final **Workshop**. Time will be available to purchase lunch, followed by a visit to Hawaii's most famous landmark- **Diamond Head**. The experience of climbing to the summit is exhilarating. Only 99 stairs and a 1.4-mile trail separate you from the 763ft. summit where you'll experience a spectacular 360-degree panoramic view. While not hiking, you'll have some free time to grab lunch on your own, enjoy a surf lesson, shop in Waikiki or just "Hang Loose" on the world's most famous beach having fun in the sun. Tonight you'll say "ALOHA" as you cruise out of Honolulu Harbor on a **Farewell Sunset Dinner Cruise**. After enjoying a spectacular meal during sunset the spectacular city lights of Honolulu will come alive and the dancers will show you how to shake your hips with some Hawaiian line dancing. (B,D)



TUESDAY, JUNE 28

Departure For Home

Breakfast will be served at your hotel followed by check-out. Today is departure day. We bid you Aloha and a Big Mahalo for visiting the islands, hope you have a safe journey home and take some of the Mana (*Hawaiian Spirit*) with you. (B)

