



School Restart Update

November 19, 2020

Guiding Principles

Equity



Access



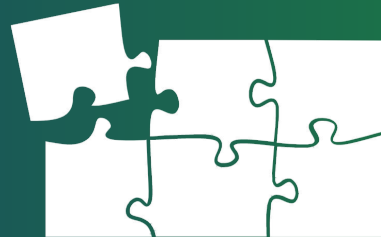
Innovation



Continuity



Compatibility



Efficacy



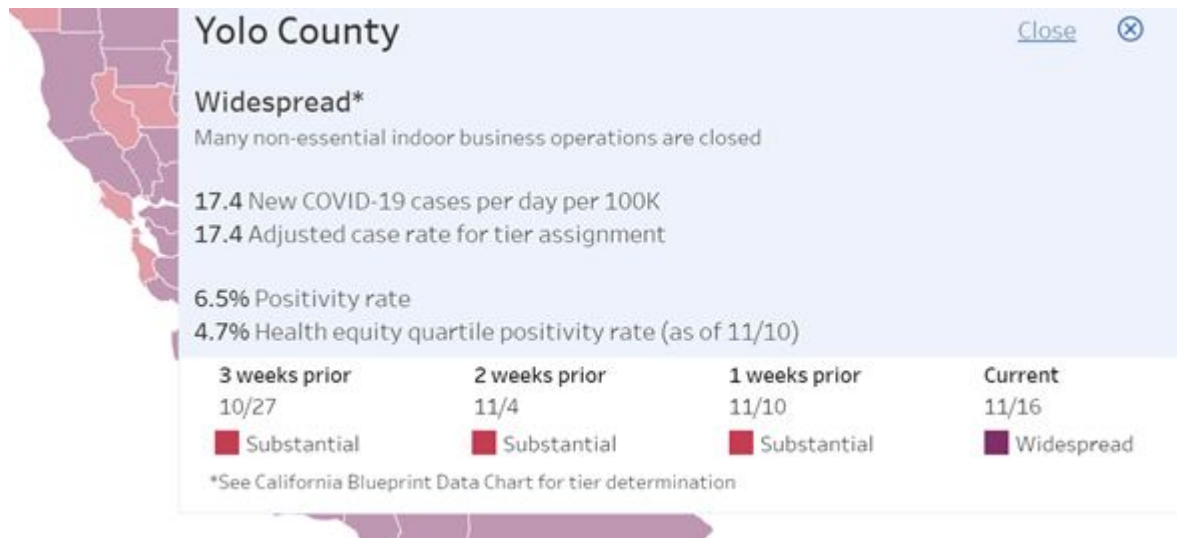


State Tiered Monitoring System

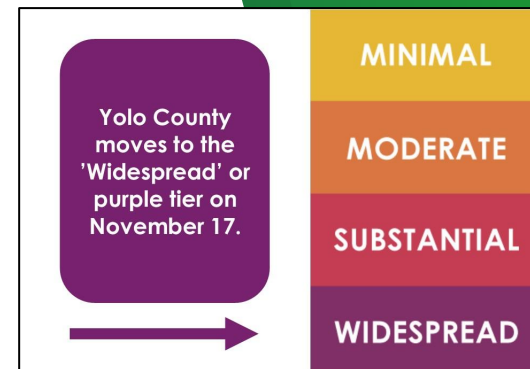
County risk level	New cases	positive tests
WIDESPREAD Many non-essential indoor business operations are closed	More than 7 daily new cases (per 100k)	More than 8% positive tests
SUBSTANTIAL Some non-essential indoor business operations are closed	4 - 7 daily new cases (per 100k)	5 - 8% positive tests
MODERATE Some indoor business operations are open with modifications	1 - 3.9 daily new cases (per 100k)	2 - 4.9% positive tests
MINIMAL Most indoor business operations are open with modifications	Less than 1 daily new cases (per 100k)	Less than 2% positive tests

Health Indicators

State Tiered Monitoring System - November 17



Returned to Purple Tier on November 17



Health Indicators

Based on Yolo County Data - November 16

Total Cases

3,863

49 Reported 11/16

Test Positivity Rate

10.34%

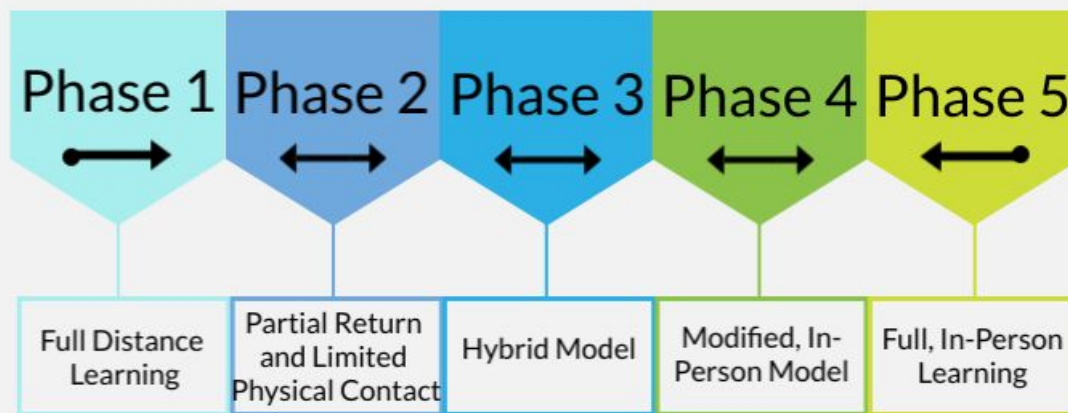
From 11/02-11/08

Daily Testing Positivity Rate



Yolo County Public Health Officer, Dr. Aimee Sisson

Phased Return to Campus Plan



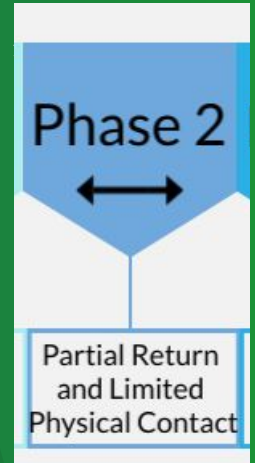
Phase 2 - Steps 1 and 2

Status

- In-person IEP assessments
- Special Education Services

Participation

- 31 Assessments completed; 85 in-progress
- Services for the week of Nov. 16-20
 - 15 Physical Therapy
 - 9 Occupational Therapy
 - 5 Autism Clinic Sessions
 - 2 Music Therapy Sessions



Phase 2 - Step 3 - Small Cohorts

Status

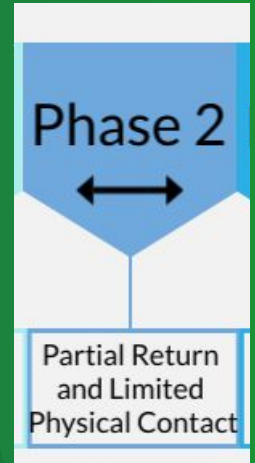
- Planning for the implementation of small in-person cohorts

Association Agreements

- Negotiations in progress

Details

- 660 students identified
- 32 cohorts planned at 16 school sites
- Model will vary depending on student needs



COVID Expenditures

March - October 2020

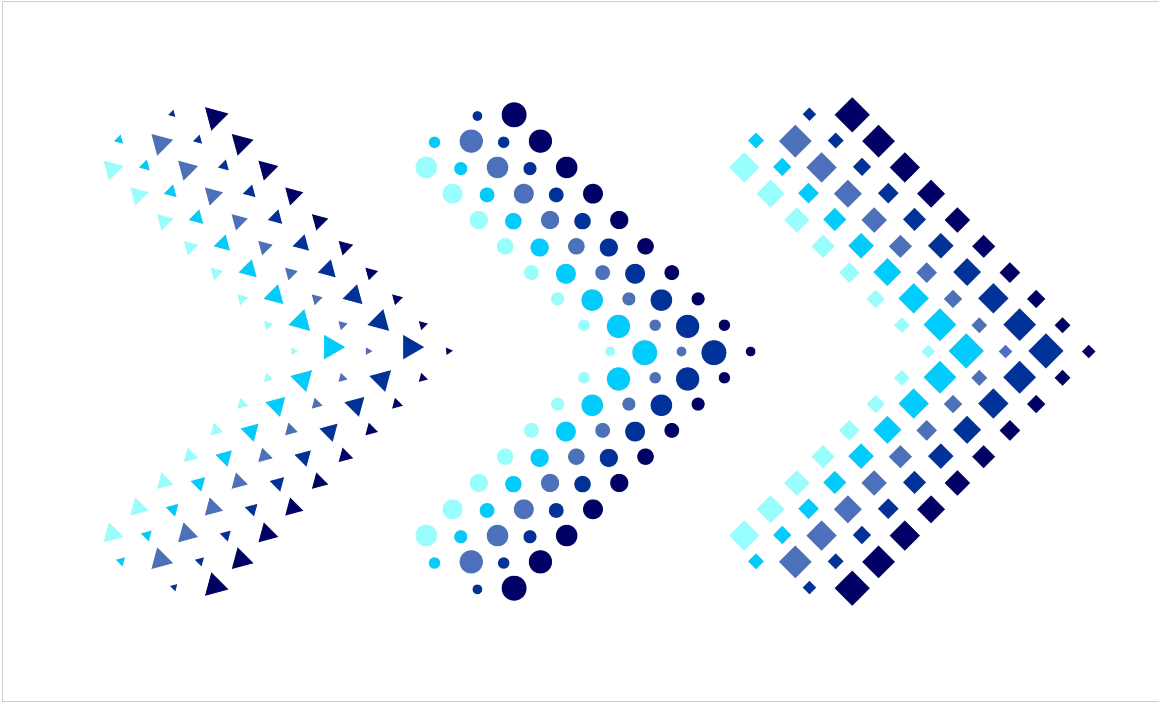
Category	Amount	Examples
Addressing learning loss	\$ 420,784	Canvas, Edgenuity, Imagine Learning, Mystery Science, Pear Deck
Providing additional instructional materials or supports	\$ 51,899	Studies Weekly, Watermelon Music, B&H Photo
Providing devices for connectivity	\$ 563,779	Chromebooks, Internet, HotSpots, Zoom
Providing health, counseling, or mental health services	\$ 18,649	Employee Assistance Program for staff and students, student health screenings
Professional Development to support students in distance-learning contexts	\$ 1,183,654	Canvas training
PPE, supplies to sanitize and clean facilities	\$ 280,678	Handwashing stations, masks, gloves, hand sanitizer, plastic dividers for offices, supplies and signage for sanitizing and cleaning
Total	\$ 2,519,443	

Survey Results



INSERT EMC SLIDES

DJUSD Next Steps





Staff & Family Survey Data



Reopening Criteria and
Stakeholder Engagement



Reopening Models and
Stakeholder Engagement



Model Selection



Reopening Actions

Roadmap to Phase 3

Variables



Infection Rates



County/State/National
Policies



Regional School District
Developments



Staffing and Employee
Agreements

Reopening Criteria and Stakeholder Engagement



Reopening Criteria

- Health and Safety
- Quality of Instruction
- Social Emotional Health and Well-being
- Access (Nutrition, Technology, Child Care)

Stakeholder Engagement

- Advisories
- Student Input
- Community Feedback
- Association Partners



Reopening Models and Stakeholder Engagement

Staff Action Team

Refine Promising Models

Review/Feedback per Reopening Criteria

- Advisories
- Community
- Students
- Association Partners



Model Selection

Staff Recommendation to the Board

Family Selection





Reopening Actions

Reopening Actions

- Staff and student assignments
- Site and classroom preparation
- Finalize negotiations
- Communication to community
- Health and safety training
- Instruction and technology supports
- Logistics
- Potential revision(s)

Variables



Infection Rates



County/State/National Policies



Regional School District Developments



Staffing and Employee Agreements

Communications

Board Meeting Updates



Stakeholder Participation



Superintendent Messages



Superintendent - PTA/O Meetings



Staff Insights e-Newsletter



Return to Campus Website



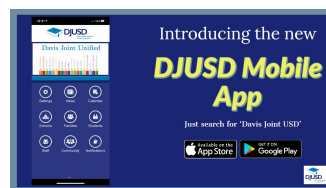
DJUSD Text Messaging for Critical Updates



Advisory Meetings



Mobile App



Closing Comments

“We are in a pandemic. We are in a moment of crisis. I know it’s frustrating. I want to acknowledge that people really want to see our communities open. I’m sure that people are upset and heartbroken that our business communities in many counties have to close. But what’s the alternative? The alternative would be to charge ahead into unknown territory, where there are warning signs that is not safe. All lives are valuable, and we have to be careful and thoughtful about how we proceed.”

-State Superintendent of Public Instruction Tony Thurmond

Comments and Questions

