



Steps to Return to Campus

October 1, 2020

Guiding Principles

Equity



Access



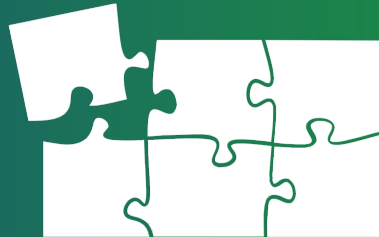
Innovation



Continuity



Compatibility



Efficacy



Framework for Decisions



Health in the Community

- State/ County Driven
- Public Health Measures



DJUSD/ Family Willingness

- Site Preparedness
- Staff/ Family Readiness




Prioritize Most Vulnerable Students

- At-Risk
- Unable to Access Distance Learning

Health Indicators

State Tiered Monitoring System as of Sept. 29


Red Tier

Yolo County metrics

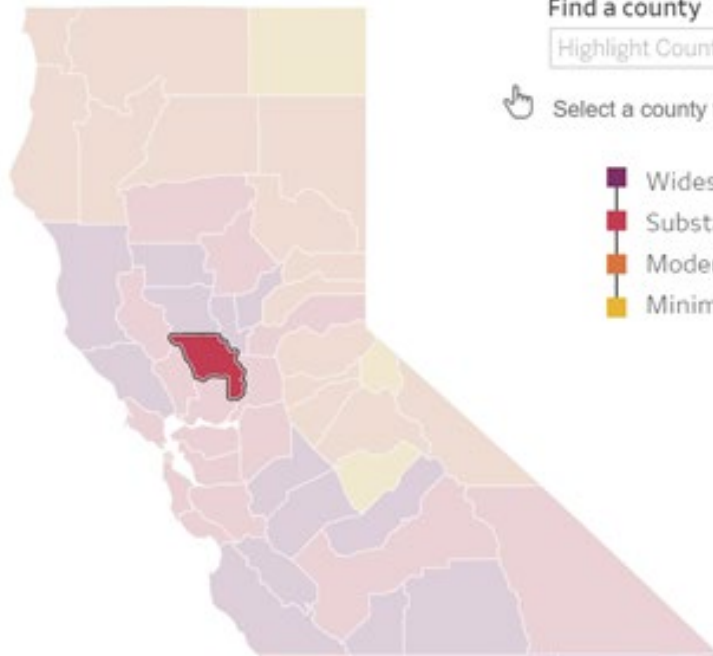
3.1

Adjusted case rate for tier assignment

New cases per day per 100K
(unadjusted) 3.1

2.5%

Positivity rate





Find a county

Highlight County 



Select a county for updated metrics

-  Widespread
-  Substantial
-  Moderate
-  Minimal

Health Indicators

Based on Yolo County Data as of October 1

Total Cases

2,828

10 Reported 9/30

Test Positivity Rate

3.07%

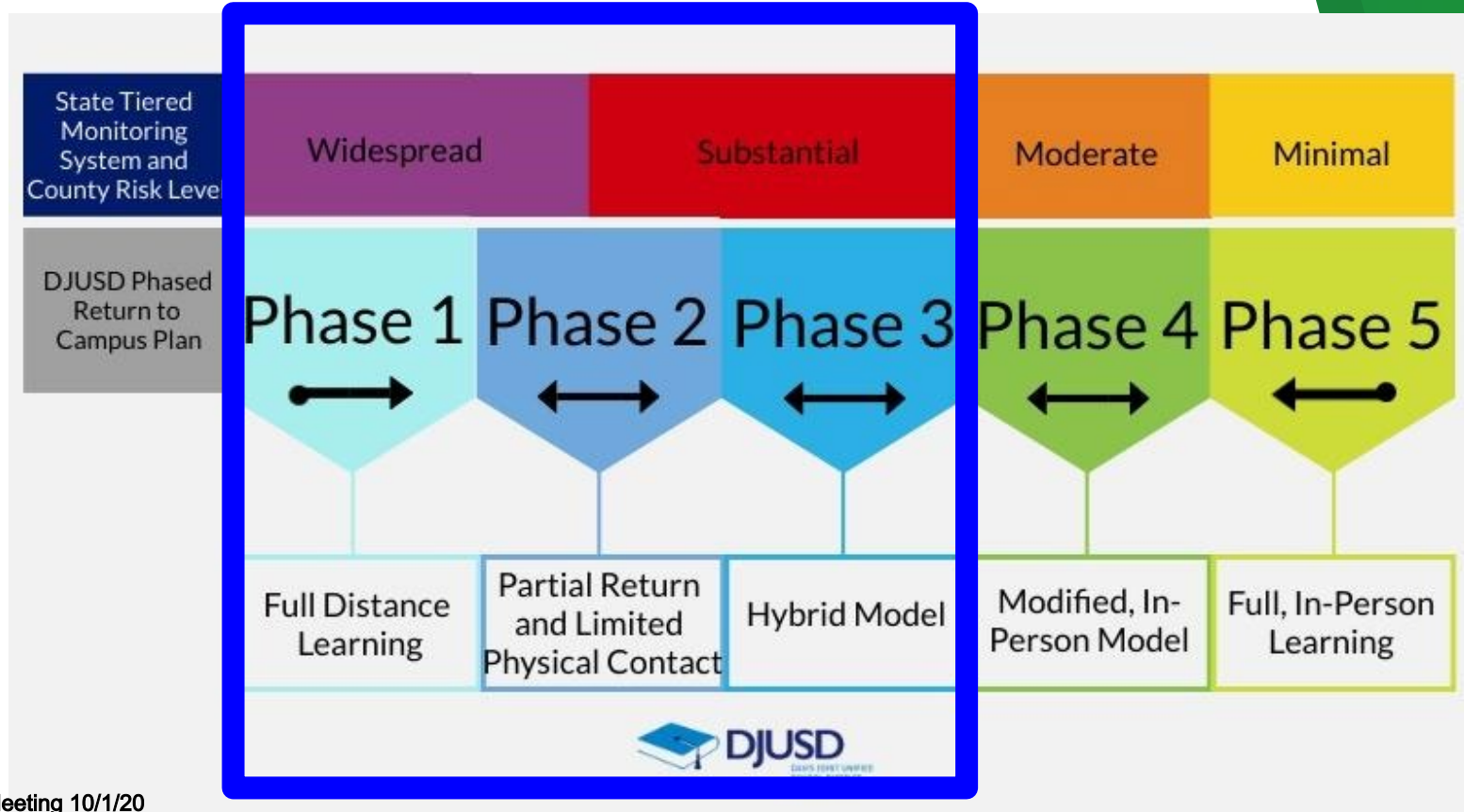
From 9/16 - 9/22

Daily Testing Positivity Rate



Access and Equity

Gradual Introduction of Students



Step 1: Special Education In -Person Assessments

High Level Plan:

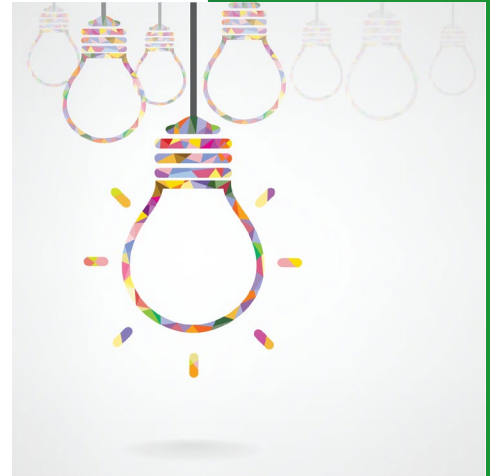
- Four school sites (V.O. Campus, BLE, Holmes, DSHS)
- Initial, Triennial, Change of Service Need

Key Tasks Completed:

- PPE, Ipads, Software
- Health Assessment and Disinfecting Protocol
- Contact Tracing Protocol

Key Tasks Remaining

- Identify and Train Staff
- Schedule, Notice, and Train Students/Parents
- Set up Assessment Stations



Step 2: Specialized Services

High Level Plan:

- Four sites (V.O. Campus, BLE, Holmes, DSHS)
- P.T., O.T., Speech, ERMHS, Adaptive P.E.
- Prioritization Criteria

Key Tasks Completed:

- Enhanced PPE
- Health Assessment and Disinfecting Protocol
- Contact Tracing Protocol

Key Tasks Remaining

- Identify and Train Staff
- Schedule, Notice, and Train Students/Parents
- Set up Service Stations
- Transportation Plan



Step 3: Small, Cohort Classes

High Level Plan:

- Four school sites (V.O. Campus, BLE, Holmes, DSHS)
- Self-contained and less than 16 in cohort
- Unable to access education through Distance Learning

Key Tasks Completed:

- PPE, signage, portable hand washing stations
- Health Assessment and Disinfecting Protocol
- Contact Tracing Protocol

Key Tasks Remaining

- Identify and Train Staff
- Schedule, Notice, and Train Students/Parents
- Set up Classrooms
- Transportation



Guiding Principles

Equity



Access



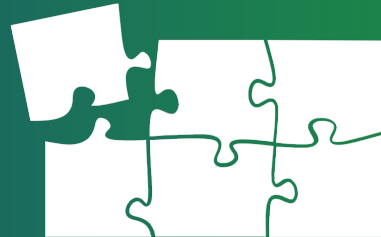
Innovation



Continuity



Compatibility



Efficacy



Public Comment and Trustee Questions

