



School Restart Update

Principle of Continuity

August 6, 2020

Guiding Principles

Equity



Access



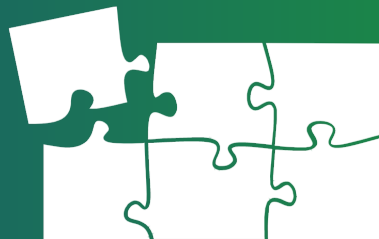
Innovation



Continuity



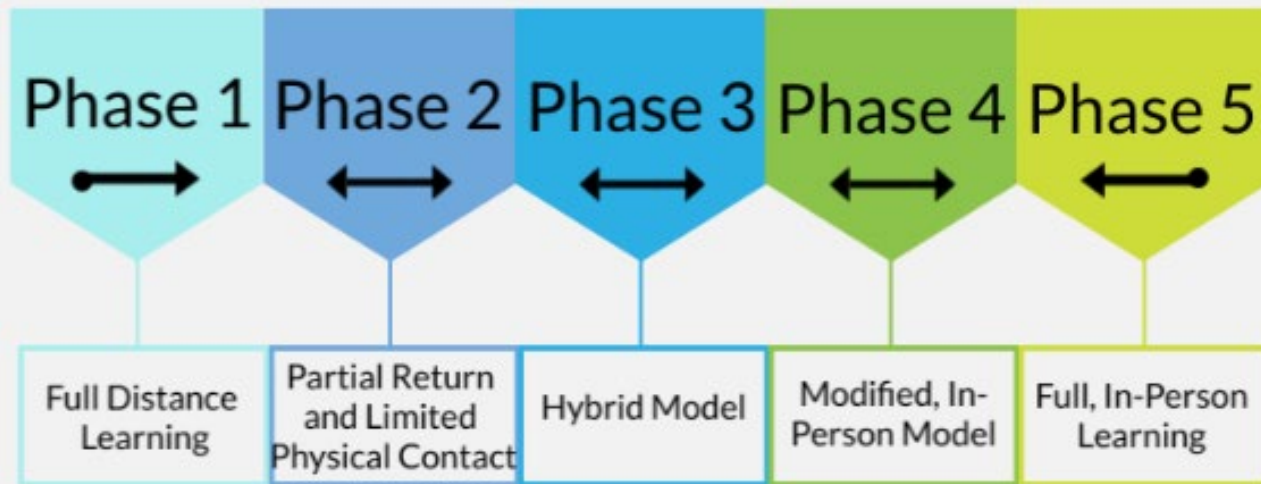
Compatibility



Efficacy

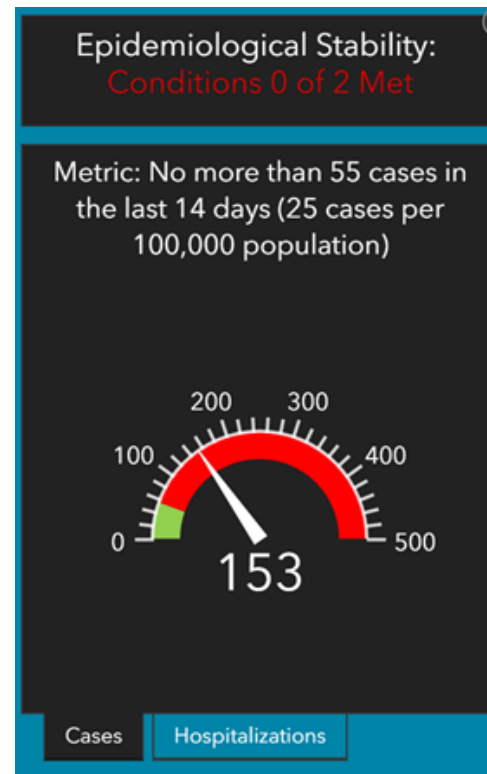
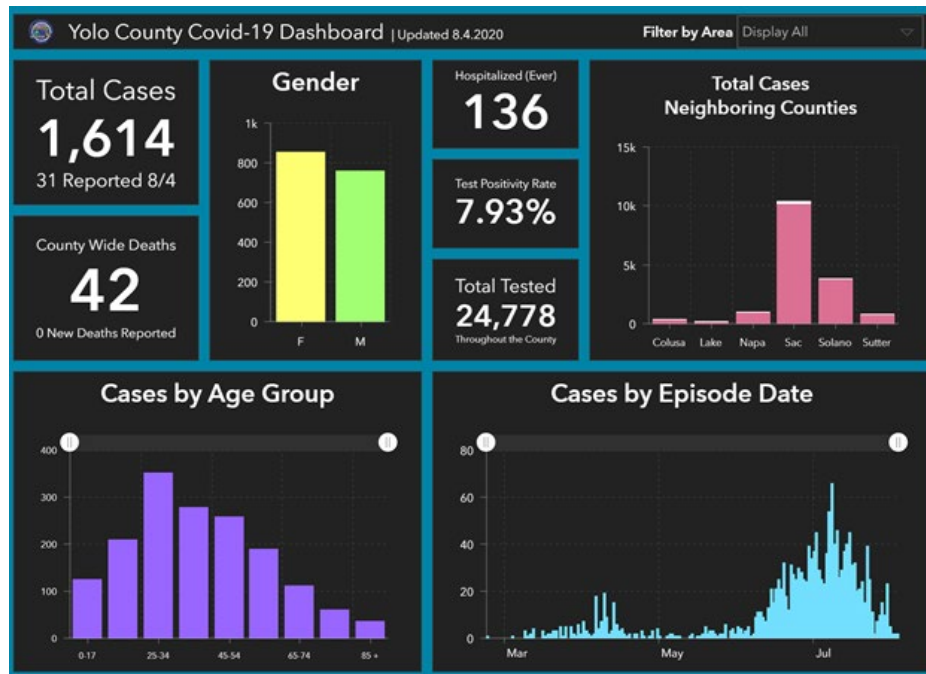


Phased Return to Campus Plan



Health Indicators

Based on Yolo County Data



DJUSD Childcare Survey Results

- 1,559 Respondents
- 540 families reported needing childcare for 774 students.
- 5% DJUSD employees
- 82% of families needing childcare would take advantage of options at \$500 or less per child per month
- 50% needing part-time care and 50% needing full-time care
- 50% would only use the childcare option if it is at their neighborhood site
- 55% of parents reported their student has a high level of need for support with Distance Learning



Communication



Superintendent updates

- Shared weekly until school starts on August 26

Restart DJUSD Reopening Guide for Families

- Scheduled release - August 15
- Hard copy guides mailed home in English and Spanish and available digitally on Restart DJUSD website

DJUSD Professional Development

Districtwide Training

Learning Philosophy

- Universal Design for Learning
- SEL and Restorative Practices

Modeling Instruction



START HERE

Learning Tools & Guidelines

Canvas Part I

LMS overview and introduction.

Structures & Instruction

Course schedules, minutes, and daily/weekly outlines.

Canvas Part II

Tutorials, tools, and features.

Conditions for Learning

Social Emotional Learning and Wellness

Attending to SEL skills and building community.

Instructional Supports for Equity and Access

Services and supports for English Learners and students with disabilities.

Student Engagement, Feedback, and Assessment

Best practices for Distance Learning, grading, and Culturally Responsive instruction.

Health and Safety

Health and Safety

Educational resources, PPE supplies, and procedures

Professional Development Time

Certificated: 40 hours

Staff time includes:

- Direct Instruction
- Application and Implementation
- Collaboration (site, level, dept.)

Delivery

1. Recorded modules (Asynchronous)
2. Live workshops (Synchronous)
3. Office hours (Individual support, Q&A)



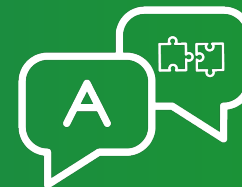
Canvas



Structures



SEL/Wellness



Equity /Access



Student Engagement/
Assessment



Health/Safety



Account



Dashboard



Courses



Calendar



Inbox



Commons



Studio



Help



DJUSD-PD

Home

Modules

Outcomes

Rubrics

Assignments



Announcements



Collaborations



Syllabus



Files



Pages



Discussions



Grades



People



Quizzes



DJUSD Professional Development

Edit



DJUSD

PROFESSIONAL DEVELOPMENT

updated 8/3/2020

Welcome to DJUSD's Canvas Week!

Professional development during this week will be centered around your needs as you embark on distance learning through Canvas, our new Learning Management System (LMS).

Workshops/seminars have been built with your needs in mind and are offered in one of two time frames, *Coffee with Canvas* and *Lunch and Learn with Canvas*. Feel free to attend as many or as few as you would like. All of the information for each of the sessions can be found below and *a recording will be linked upon availability*.

Instructional Technology

- Hotspots and Internet Access
- Chromebook Distribution
- Zoom Video Conferencing
- Online Re-Enrollment

Elements of the Elementary Schedule

(Morning)

Elementary Schedule

Elements	Activities
SOCIAL EMOTIONAL LEARNING (SEL)	Daily Morning Class Meeting <ul style="list-style-type: none"> <input type="checkbox"/> SEL Activity/Incorporating PBIS into class culture <input type="checkbox"/> Set up Learning Expectations for the Day
INSTRUCTION <u>Daily Minimum Instructional Minutes</u> TK/K: <ul style="list-style-type: none"> <input type="checkbox"/> 180 Total minutes <input type="checkbox"/> 30-45 Synchronous minutes 1st-3rd: <ul style="list-style-type: none"> <input type="checkbox"/> 230 Total minutes <input type="checkbox"/> 40-50 Synchronous minutes 4th-6th: <ul style="list-style-type: none"> <input type="checkbox"/> 240 Total minutes <input type="checkbox"/> 50-60 Synchronous minutes 	Daily Instructional Activities Include: <ul style="list-style-type: none"> <input type="checkbox"/> Synchronous (<i>This is live with the teacher</i>): <ul style="list-style-type: none"> <input type="checkbox"/> SEL Daily Class Meeting <input type="checkbox"/> Whole Class Direct Instruction <input type="checkbox"/> Small group/1:1 <input type="checkbox"/> Mindfulness, Brain Breaks, etc. <input type="checkbox"/> Asynchronous: <ul style="list-style-type: none"> <input type="checkbox"/> Pre-recorded Direct Instruction Lesson <input type="checkbox"/> Independent work on assignments and projects
LUNCH	

Elements of the Elementary Schedule (Afternoon)

Elementary Schedule Cont.

LUNCH	
SPECIAL SUBJECTS and INTERVENTION BLOCK 120-180 minutes	<input type="checkbox"/> Special Education, ELD, Reading, Music, SEL groups <input type="checkbox"/> Scheduled in coordination with classroom teacher
NON-STUDENT TIME	<input type="checkbox"/> Teacher Prep/Grade Level and Special Education/General Education Collaboration <input type="checkbox"/> IEP/504/SST Meetings <input type="checkbox"/> Office Hours (drop-in) <input type="checkbox"/> Staff Meetings (Wednesdays)

Q 1/3 & Q 2/4 Quarter Block Schedule

DAVIS JOINT UNIFIED SCHOOL DISTRICT														
School Year Calendar														
2020 - 2021														
July					August					September				
		1	2	3	3	4	5	6	7		1	2	3	4
6	7	8	9	10	10	11	12	13	14	7	8	9	10	11
13	14	15	16	17	17	18	19	20	21	14	15	16	17	18
20	21	22	23	24	24	25	26	27	28	21	22	23	24	25
27	28	29	30	31	31					28	29	30		
October					November					December				
			1	2	2	3	4	5	6		1	2	3	4
5	6	7	8	9	9	10	11	12	13	7	8	9	10	11
12	13	14	15	16	16	17	18	19	20	14	15	16	17	18
19	20	21	22	23	23	24	25	26	27	21	22	23	24	25
26	27	28	29	30	30					28	29	30	31	
January					February					March				
				1	1	2	3	4	5	1	2	3	4	5
4	5	6	7	8	8	9	10	11	12	8	9	10	11	12
11	12	13	14	15	15	16	17	18	19	15	16	17	18	19
18	19	20	21	22	22	23	24	25	26	22	23	24	25	26
25	26	27	28	29						29	30	31		
April					May					June				
			1	2	3	4	5	6	7		1	2	3	4
5	6	7	8	9	10	11	12	13	14	7	8	9	10	11
12	13	14	15	16	17	18	19	20	21	14	15	16	17	18
19	20	21	22	23	24	25	26	27	28	21	22	23	24	25
26	27	28	29	30	31					28	29	30		

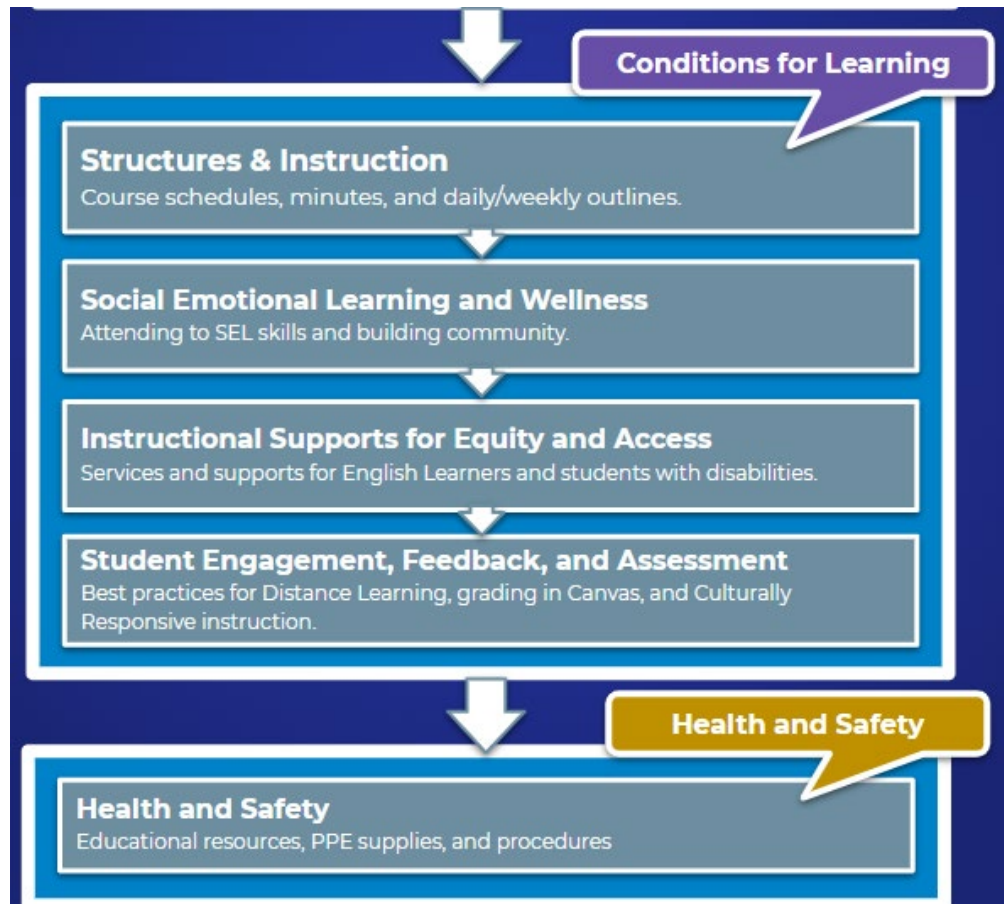
Secondary

Q1 & Q3 Distance Learning Daily Quarter Block Schedule

	Monday	Tuesday	Wednesday		Thursday	Friday
8:45 - 9:45	Period 2	Period 2	8:45-9:30	Period 2	Period 2	Period 2
9:45 - 9:55	Break		9:30-9:40	Break	Break	
9:55 - 10:55	Period 4	Period 4	9:40-10:25	Period 4	Period 4	Period 4
10:55 - 11:05	Break		10:25-10:35	Break	Break	
11:05 - 12:05	Period 6	Period 6	10:35-11:05	Advisory/SEL/ Community Building	Period 6	Period 6
12:05 - 12:45	Lunch		11:05-11:15	Break	Lunch	
12:45 - 1:30	Individual student work time	Small Group Instruction/Student Work Time Period 2	11:15-12:00	Period 6	Small Group Instruction/Student Work Time Period 4	Small Group Instruction/Student Work Time Period 6
1:30 - 2:30	Student Work Time/Small Group Intervention/SPED Support Services		12:00-12:45	Lunch	Student Work Time/Small Group Intervention/SPED Support Services	
2:30 - 3:15	Individual student work time	Individual student work time	12:45-3:15	Teacher Collaboration/Staff Meeting	Individual student work time	Individual student work time

Secondary Schedule

Conditions for Learning



Program, Curriculum, and Pedagogy

Programs

CTE
Arts
PE
Science
Immersion
World Language

Curriculum

Benchmark
EnVision Math
Imagine Learning
Imagine Español*
Open Up Resources
Lab Aides (7-8)*
Amplify (4-6)*
Mystery Science (K-3)
Studies Weekly

Pedagogy

Culturally Responsive
Teaching
Feedback and
Assessments
Rubrics
Discussions and
Collaboration
Vertical Articulation
Outdoor Learning

*New programs for 2020-21

Continuity of Learning

1. Scheduling Continuity

- Maintaining “fluency” within block scheduling
- Music, World Languages, Math
- Grade level and department alignment

2. Interventions

- Supplementary academic supports
- Tutoring, “Clinic,” Bridge, Academic Center
- MTSS Tiers 2 and 3 interventions

3. Extracurricular

- Student community and social emotional connections
- Clubs, athletics, leadership, academic teams

Site Continuity of Learning Plan

Provide a summary of stakeholder outreach that informed your planning.

Describe how your site will use the dedicated advisory/SEL time period:

How are you addressing scheduling continuity?

- a. Maintaining “fluency” between quarter blocks (Secondary): World Language, Music, Math
- b. Music, Science, Special subjects (Elementary)
- c. Alignment of instruction between grade levels and departments

How are you addressing Interventions?

- a. Supplementary academic supports
- b. Tutoring, “Clinic,” Bridge, Academic Center
- c. MTSS Tiers 2 and 3 interventions
- d. Structured collaboration between general education and EL/SpEd staff

What plans are being developed for extra curricular opportunities?

- a. Student community and social emotional connections
- b. Clubs, athletics, leadership, academic teams

DJUSD Learning Continuity and Attendance Plan

Learning Continuity and Attendance Plan Template (2020–21)

The instructions for completing the Learning Continuity and Attendance Plan is available at <https://www.cde.ca.gov/re/ic/documents/lmgcnrntatndncpln-instructions.docx>.

Local Educational Agency (LEA) Name	Contact Name and Title	Email and Phone
[Insert LEA Name here]	[Insert Contact Name and Title here]	[Insert Email and Phone here]

General Information

[A description of the impact the COVID-19 pandemic has had on the LEA and its community.]

[Respond here]

Stakeholder Engagement

[A description of the efforts made to solicit stakeholder feedback.]

[Respond here]

[A description of the options provided for remote participation in public meetings and public hearings.]

[Respond here]

[A summary of the feedback provided by specific stakeholder groups.]

[Respond here]

if possible, particularly for students who have
or are at a greater risk of experiencing learning loss

actions may be added as necessary]

	Total Funds	Contributing
to increasing or	[\$ 0.00]	[Y/N]
to increasing or	[\$ 0.00]	[Y/N]

Distance Learning Program

Continuity of Instruction

[A description of how the LEA will provide continuity of instruction during the school year to ensure pupils have access to a full curriculum of substantially similar quality regardless of the method of delivery, including the LEA's plan for curriculum and instructional resources that will ensure instructional continuity for pupils if a transition between in-person instruction and distance learning is necessary.]

[Respond here]

Access to Devices and Connectivity

[A description of how the LEA will ensure access to devices and connectivity for all pupils to support distance learning.]

Looking Ahead

- Summer Professional Development completion
- Fall Professional Development planning
- Learning Continuity program development
- Stakeholder engagement
- Learning Continuity and Attendance Plan
- National Equity Project virtual leadership retreat
- Staying together

