

DJUSD California Dashboard Results

DJUSD Board of Education - January 16, 2020

Role of the Dashboard in DJUSD

- Aligns with Local Control Funding Formula (LCFF) design principles
- Provides multiple indicators of District performance over time
- Integrates into LCAP Advisory discussions
- Focuses inquiry and action

DJUSD Math 2019

Level	DECLINED SIGNIFICANTLY	DECLINED	MAINTAINED	INCREASED	INCREASED SIGNIFICANTLY
VERY HIGH	Green (None)	Green (None)	Blue Davis Joint Unified (District Placement) • North Davis Elementary • Ralph Waldo Emerson Junior High	Blue • Davis Senior High • Oliver Wendell Holmes Junior High • Pioneer Elementary • Robert E. Willett Elementary	Blue • Cesar Chavez Elementary
HIGH	Green (None)	Green • Birch Lane Elementary • Frances Ellen Watkins Harper Junior High • Fred T. Korematsu Elementary at Mace Ranch	Green • Patwin Elementary	Green (None)	Blue (None)
MEDIUM	Yellow (None)	Yellow (None)	Yellow (None)	Green • Marquette Montgomery Elementary	Green (None)
LOW	Orange (None)	Orange (None)	Orange (None)	Yellow (None)	Yellow (None)
VERY LOW	Red (None)	Red (None)	Red (None)	Orange (None)	Orange (None)

DJUSD English Language Arts 2019

Level	DECLINED SIGNIFICANTLY	DECLINED	MAINTAINED	INCREASED	INCREASED SIGNIFICANTLY
VERY HIGH	Green (None)	Green • North Davis Elementary	Blue • Pioneer Elementary	Blue Davis Joint Unified (District Placement) • Davis Senior High • Oliver Wendell Holmes Junior High • Ralph Waldo Emerson Junior High • Robert E. Willett Elementary	Blue • Cesar Chavez Elementary
HIGH	Green (None)	Green • Birch Lane Elementary	Green • Frances Ellen Watkins Harper Junior High • Fred T. Korematsu Elementary at Mace Ranch	Green • Patwin Elementary	Blue (None)
MEDIUM	Yellow (None)	Yellow (None)	Yellow (None)	Green • Marquette Montgomery Elementary	Green (None)
LOW	Orange (None)	Orange (None)	Orange (None)	Yellow (None)	Yellow (None)
VERY LOW	Red (None)	Red (None)	Red (None)	Orange (None)	Orange (None)

DJUSD Absenteeism 2019

Level	INCREASED SIGNIFICANTLY <i>from Prior Year (by 3.0% or more)</i>	INCREASED <i>from Prior Year (by 0.5% to less than 3.0%)</i>	MAINTAINED <i>from Prior Year (declined or increased by less than 0.5%)</i>	DECLINED <i>from Prior Year (by 0.5% to less than 3.0%)</i>	DECLINED SIGNIFICANTLY <i>from Prior Year (by 3.0% or more)</i>
VERY LOW <i>2.5% or less in Current Year</i>	Yellow (None)	Green (None)	Blue (None)	Blue • Cesar Chavez Elementary	Blue (None)
LOW <i>More than 2.5% to 5.0% in Current Year</i>	Orange (None)	Yellow (None)	Green • Robert E. Willett Elementary	Green • Pioneer Elementary	Blue (None)
MEDIUM <i>More than 5.0% to 10.0% in Current Year</i>	Orange (None)	Orange • Frances Ellen Watkins Harper Junior High • North Davis Elementary • Patwin Elementary • Ralph Waldo Emerson Junior High	Yellow Davis Joint Unified (District Placement) • Birch Lane Elementary • Fred T. Korematsu Elementary at Mace Ranch	Green • Marguerite Montgomery Elementary • Oliver Wendell Holmes Junior High	Green (None)
HIGH <i>More than 10.0% to 20.0% in Current Year</i>	Red (None)	Orange • Fairfield Elementary	Orange (None)	Yellow (None)	Yellow (None)
VERY HIGH <i>More than 20.0% in Current Year</i>	Red (None)	Red • Davis School for Independent Study	Red (None)	Orange (None)	Yellow (None)

DJUSD Suspension Rate 2019

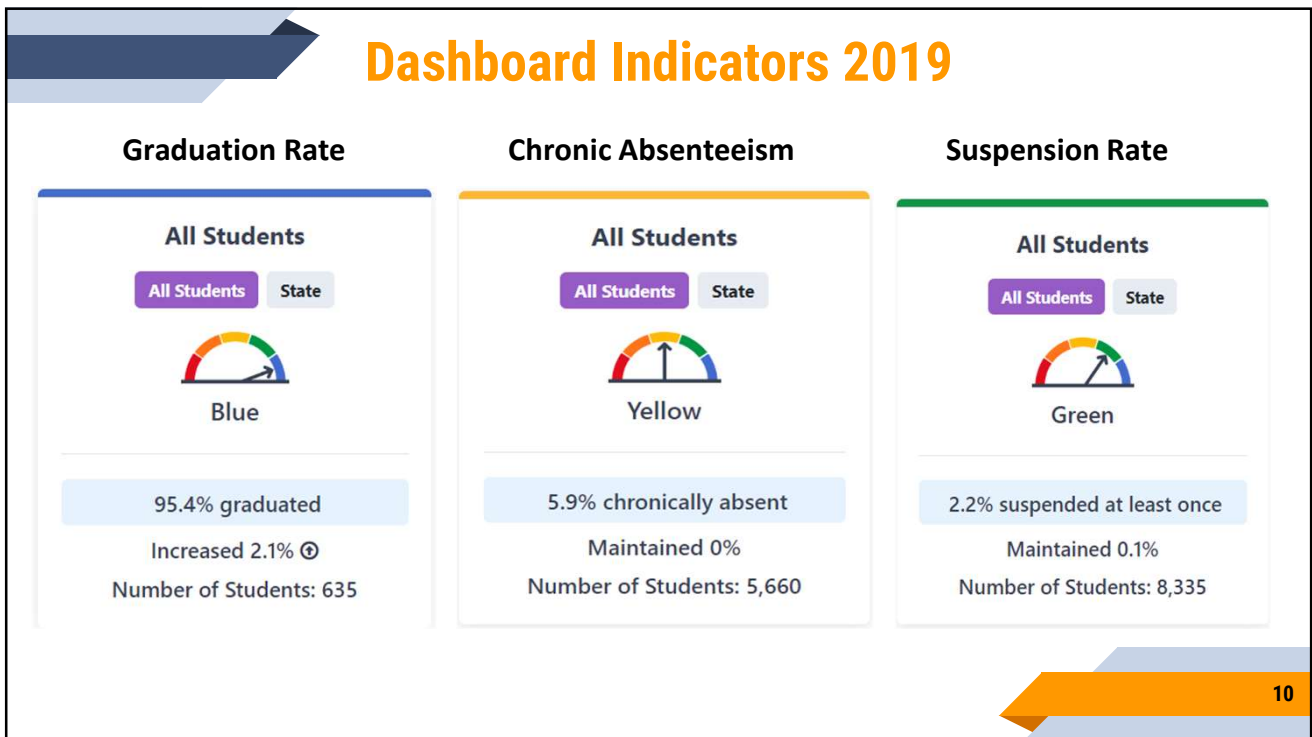
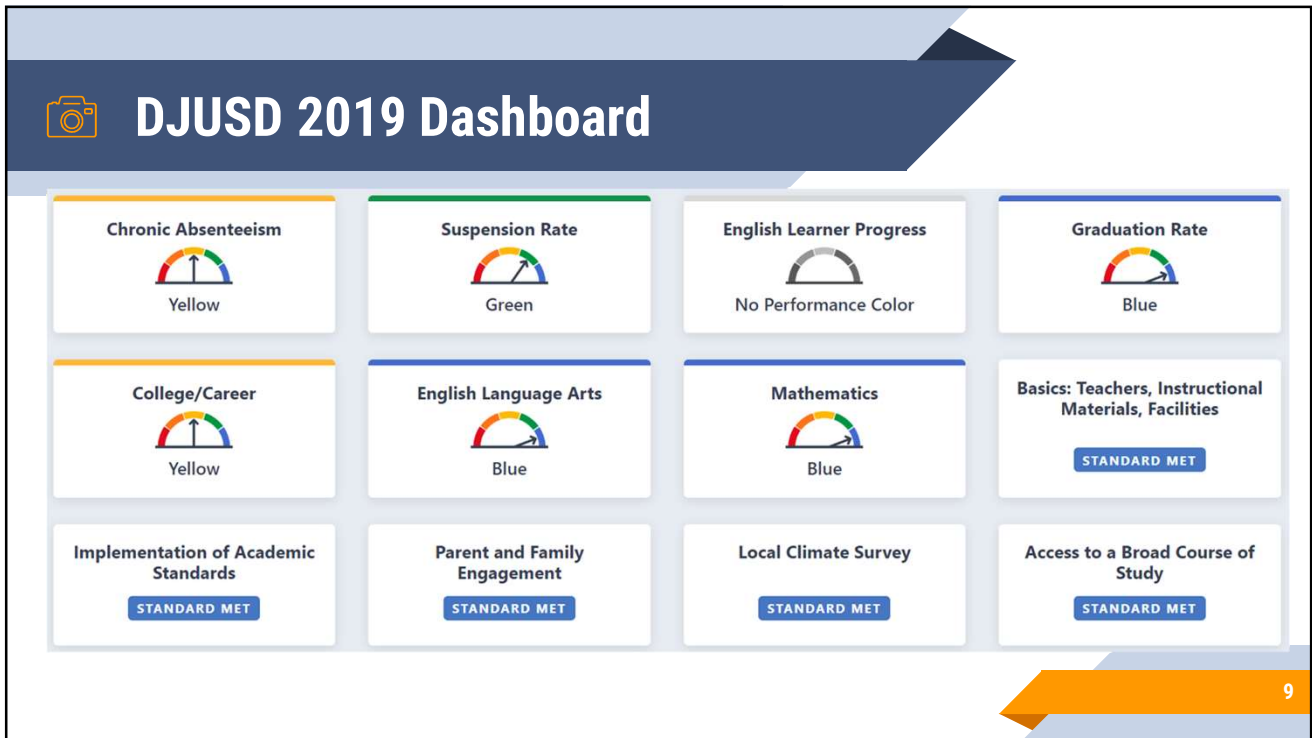
Level	INCREASED SIGNIFICANTLY	INCREASED	MAINTAINED	DECLINED	DECLINED SIGNIFICANTLY
VERY LOW	Gray (N/A)	Green • Cesar Chavez Elementary • Robert E. Willett Elementary	Blue • Fairfield Elementary	Blue • Davis School for Independent Study	Blue • Pioneer Elementary
LOW	Orange (None)	Yellow • Fred T. Korematsu Elementary at Mace Ranch	Green Davis Joint Unified (District Placement) • Patwin Elementary	Green • North Davis Elementary	Blue (None)
MEDIUM	Orange (None)	Orange • Davis Senior High • Oliver Wendell Holmes Junior High	Yellow • Frances Ellen Watkins Harper Junior High	Green • King (Martin Luther) High (Continuation) • Ralph Waldo Emerson Junior High	Green • Marguerite Montgomery Elementary
HIGH	Red (None)	Orange • Birch Lane Elementary	Orange (None)	Yellow (None)	Yellow (None)
VERY HIGH	Red (None)	Red (None)	Red (None)	Orange (None)	Yellow (None)

DJUSD Graduation Rate 2019

Level	DECLINED SIGNIFICANTLY	DECLINED	MAINTAINED	INCREASED	INCREASED SIGNIFICANTLY
VERY HIGH	Gray (N/A)	Blue (None)	Blue (None)	Blue Davis Joint Unified (District Placement) • Davis Senior High	Blue (None)
HIGH	Orange (None)	Yellow (None)	Green (None)	Green (None)	Blue (None)
MEDIUM	Orange (None)	Orange (None)	Yellow (None)	Green • King (Martin Luther) High (Continuation)	Green (None)
LOW	Red (None)	Orange (None)	Orange (None)	Yellow (None)	Yellow (None)
VERY LOW	Red (None)	Red (None)	Red (None)	Red (None)	Red (None)

DJUSD College/Career Indicator 2019

Level	DECLINED SIGNIFICANTLY <i>from Prior Year (by 9.1% or more)</i>	DECLINED <i>from Prior Year (by 2.0% to less than 9.0%)</i>	MAINTAINED <i>from Prior Year (declined or increased by less than 1.9%)</i>	INCREASED <i>from Prior Year (by 2.0% to 8.9%)</i>	INCREASED SIGNIFICANTLY <i>from Prior Year (by 9.0% or more)</i>
VERY HIGH <i>70.0% or greater in Current Year</i>	Yellow (None)	Green (None)	Blue (None)	Blue (None)	Blue (None)
HIGH <i>55.0% to 69.9% in Current Year</i>	Orange (None)	Yellow Davis Joint Unified (District Placement) • Davis Senior High	Green (None)	Green (None)	Blue (None)
MEDIUM <i>35.0% to less than 54.9% in Current Year</i>	Orange (None)	Orange (None)	Yellow (None)	Green (None)	Green (None)
LOW <i>10.0% to 34.9% in Current Year</i>	Red (None)	Orange (None)	Orange (None)	Yellow (None)	Yellow (None)
VERY LOW <i>9.9% or lower in Current Year</i>	Red (None)	Red (None)	Red • King (Martin Luther) High (Continuation)	Orange (None)	Yellow (None)



English Learner Progress 2019

DJUSD

English Learner Progress

All Students State

63.2% making progress towards English language proficiency

Number of EL Students: 527

Progress Level = Low

CALIFORNIA

English Learner Progress

All Students State

48.3% making progress towards English language proficiency

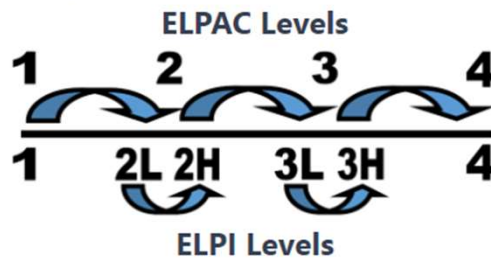
Number of EL Students:
844,257

Progress Level = Medium

11

English Learner Progress Indicator (ELPI)

Assessments: ELs take the ELPAC exam to measure progress towards English language proficiency. The ELPAC has 4 levels.

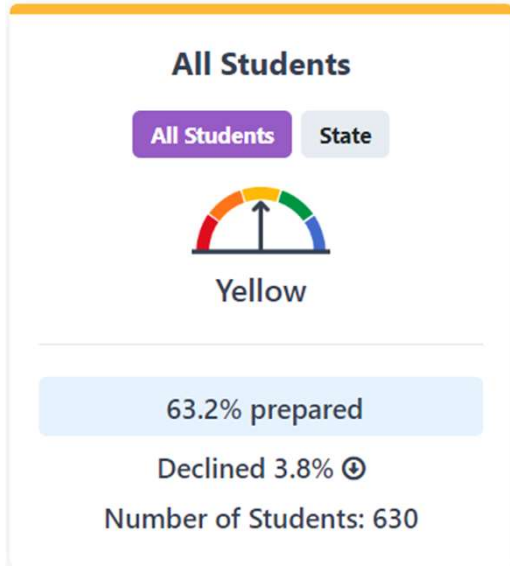


Accountability: The 4 ELPAC levels were divided into 6 ELPI levels to determine whether ELs made progress toward English language proficiency.

12

College & Career Indicator 2019

College Career Readiness Measures

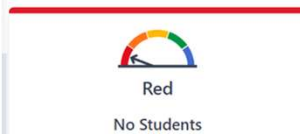
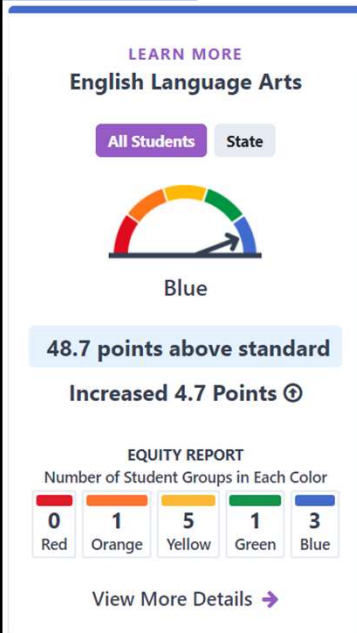


Smarter Balanced Summative Assessments	Advanced Placement Exams
International Baccalaureate Exams	CTE Pathway Completion
College Credit Courses	UC/CSU a-g Requirements
State Seal of Biliteracy	Leadership/Military Science

Seven new measures connected to CTE in 2020

13

Student Groups & Equity Report



14

DJUSD Student Group Report 2019

Student Group	Chronic Absenteeism	Suspension Rate	Graduation Rate	College/Career	English Language Arts	Mathematics
All Students	Yellow	Green	Blue	Yellow	Blue	Blue
English Learners	Green	Green	Green	Green	Orange	Yellow
Foster Youth	Red	Red	None	None	Yellow	Yellow
Homeless	Yellow	Yellow	None	None	None	None
Socioeconomically Disadvantaged	Orange	Yellow	Green	Orange	Yellow	Orange
Students with Disabilities	Orange	Yellow	Green	Yellow	Yellow	Yellow
African American	Yellow	Green	None	None	Yellow	Yellow
American Indian or Alaska Native	None	Yellow	None	None	None	None
Asian	Blue	Blue	Blue	Blue	Blue	Blue
Filipino	Blue	Yellow	None	None	Green	Green
Hispanic	Orange	Yellow	Green	Green	Yellow	Yellow
Native Hawaiian or Pacific Islander	None	None	None	None	None	None
White	Green	Yellow	Blue	Yellow	Blue	Blue
Two or More Races	Orange	Green	Blue	Yellow	Blue	Blue

DJUSD Homeless Students 2018 [Differentiated Assistance]

Chronic Absenteeism

Homeless

Student Group State



Red

50% chronically absent

Maintained 0%

Number of Students: 22

College/Career Indicator

Homeless

Student Group State



Red

11.8% prepared

Declined -13.2% Ⓢ

Number of Students: 17

Suspension

Homeless

Student Group State



Red

12.2% suspended at least once

Increased 7.2% Ⓢ

Number of Students: 49

DJUSD Homeless Students 2019

Chronic Absenteeism

Homeless

Student Group State



Yellow

19% chronically absent

Declined 31% ⬇️

Number of Students: 58

College/Career Indicator

Homeless

Student Group State



No Performance Color

7.7% prepared

Declined 4.1% ⬇️

Number of Students: 13

Suspension

Homeless

Student Group State



Yellow

5.6% suspended at least once

Declined 6.6% ⬇️

Number of Students: 89

17

Staff Analysis and Action 2019

Safe and Inclusive Environments
(LCAP Goal #3, Action #7)



Homeless Identification
Case Management
Transportation
Suspension Alternatives

Suspension Rate

Homeless

Student Group State



Yellow

5.6% suspended at least once

Declined 6.6% ⬇️

Number of Students: 89

Chronic Absenteeism

Homeless

Student Group State



Yellow

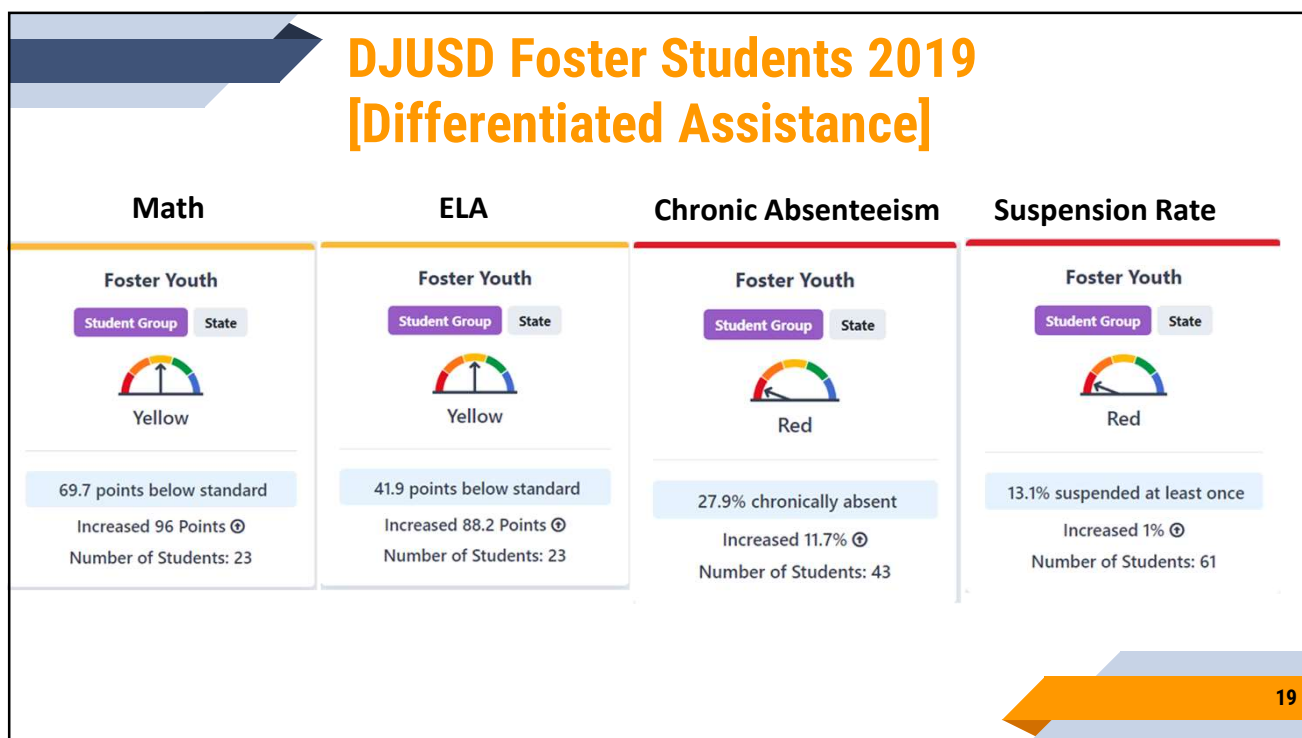
19% chronically absent

Declined 31% ⬇️

Number of Students: 58

18

DJUSD Foster Students 2019 [Differentiated Assistance]



19



Action Plan 2019

- Multi-Tiered System of Support
- Homeless/Foster Youth Liaison
- LCAP (new plan)
- Professional Development



20



Implications for All Students

- Beyond Test Scores
- Career Tech Education
- Ethnic Studies
- MTSS (Tier 1 Supports)
- Equity Lens

21

Questions?