

CALIFORNIA DEPARTMENT OF EDUCATION
REQUEST FOR ALLOWANCE OF ATTENDANCE DUE TO EMERGENCY CONDITIONS
FORM J-13A, REVISED DECEMBER 2017

SECTION A: REQUEST INFORMATION

- This form is used to obtain approval of attendance and instructional time credit pursuant to *Education Code (EC)* sections 41422, 46200, 46391, 46392 and *California Code of Regulations (CCR)*, Title 5, Section 428.
- Only schools that report Principal Apportionment average daily attendance (ADA) for the purpose of calculating a K–12 Local Control Funding Formula (LCFF) entitlement should submit this form.
- Refer to the instructions and frequently asked questions at <https://www.cde.ca.gov/fq/aa/pa/j13a.asp> for information regarding the completion of this form.

PART I: LOCAL EDUCATIONAL AGENCY (LEA)

LEA NAME:		COUNTY CODE:	DISTRICT CODE:	CHARTER NUMBER (IF APPLICABLE):
LEA SUPERINTENDENT OR ADMINISTRATOR NAME:				FISCAL YEAR:
ADDRESS:			COUNTY NAME:	
CITY:		STATE:	ZIP CODE:	
CONTACT NAME:	TITLE:	PHONE:	E-MAIL:	

PART II: LEA TYPE AND SCHOOL SITE INFORMATION APPLICABLE TO THIS REQUEST (Choose only one LEA type):

<input type="checkbox"/> SCHOOL DISTRICT Choose one of the following: <input type="checkbox"/> All district school sites <input type="checkbox"/> Select district school sites	<input type="checkbox"/> COUNTY OFFICE OF EDUCATION (COE) Choose one of the following: <input type="checkbox"/> All COE school sites <input type="checkbox"/> Select COE school sites	<input type="checkbox"/> CHARTER SCHOOL
--	---	--

PART III: CONDITION(S) APPLICABLE TO THIS REQUEST:

<input type="checkbox"/> SCHOOL CLOSURE: When one or more schools were closed because of conditions described in <i>EC</i> Section 41422. LCFF apportionments should be maintained and instructional time credited in Section B for the school(s) without regard to the fact that the school(s) were closed on the dates listed, due to the nature of the emergency. Approval of this request authorizes the LEA to disregard these days in the computation of ADA (per <i>EC</i> Section 41422) without applicable penalty and obtain credit for instructional time for the days and the instructional minutes that would have been regularly offered on those days pursuant to <i>EC</i> Section 46200, et seq. <input type="checkbox"/> There was a Declaration of a State of Emergency by the Governor of California during the dates associated with this request.
<input type="checkbox"/> MATERIAL DECREASE: When one or more schools were kept open but experienced a material decrease in attendance pursuant to <i>EC</i> Section 46392 and <i>CCR</i> , Title 5, Section 428. Material decrease requests that include all school sites within the school district must demonstrate that the school district as a whole experienced a material decrease in attendance. Material decrease requests for one or more but not all sites within the school district must show that each site included in the request experienced a material decrease in attendance pursuant to <i>EC</i> Section 46392 and <i>CCR</i> , Title 5, Section 428. The request for substitution of estimated days of attendance for actual days of attendance is in accordance with the provisions of <i>EC</i> Section 46392. Approval of this request will authorize use of the estimated days of attendance in the computation of LCFF apportionments for the described school(s) and dates in Section C during which school attendance was materially decreased due to the nature of the emergency. <input type="checkbox"/> There was a Declaration of a State of Emergency by the Governor of California during the dates associated with this request.
<input type="checkbox"/> LOST OR DESTROYED ATTENDANCE RECORDS: When attendance records have been lost or destroyed as described in <i>EC</i> Section 46391. Requesting the use of estimated attendance in lieu of attendance that cannot be verified due to the loss or destruction of attendance records. This request is made pursuant to <i>EC</i> Section 46391: <i>"Whenever any attendance records of any district have been lost or destroyed, making it impossible for an accurate report on average daily attendance for the district for any fiscal year to be rendered, which fact shall be shown to the satisfaction of the Superintendent of Public Instruction by the affidavits of the members of the governing board of the district and the county superintendent of schools, the Superintendent of Public Instruction shall estimate the average daily attendance of such district. The estimated average daily attendance shall be deemed to be the actual average daily attendance for that fiscal year for the making of apportionments to the school district from the State School Fund."</i>

SECTION B: SCHOOL CLOSURE

☐ Not Applicable (Proceed to Section C)

PART I: NATURE OF EMERGENCY (Describe in detail.)

☐ Supplemental Page(s) Attached

PART II: SCHOOL INFORMATION (Use the supplemental Excel form at <https://www.cde.ca.gov/fg/aa/pa/j13a.asp> if more than 10 lines are needed for this request. Attach a copy of a school calendar. If the request is for multiple school sites, and the sites have differing school calendars, attach a copy of each different school calendar to the request.)

A	B	C	D	E	F	G	H	I
School Name	School Code	Site Type	Days in School Calendar	Emergency Days Built In	Built In Emergency Days Used	Date(s) of Emergency Closure	Closure Dates Requested	Total Number of Days Requested

PART III: CLOSURE HISTORY (List closure history for all schools in Part II. Refer to the instructions for an example.)

A	B	C	D	E	F
School Name	School Code	Fiscal Year	Closure Dates	Nature	Weather Related Yes/No

SECTION C: MATERIAL DECREASE

☐ Not Applicable (Proceed to Section D)

PART I: NATURE OF EMERGENCY (Describe in detail.)

☐ Supplemental Page(s) Attached

PART II: MATERIAL DECREASE CALCULATION (Use the supplemental Excel file at <https://www.cde.ca.gov/fq/aa/pa/j13a.asp> if more than 10 lines are needed for this request. Refer to the instructions for information on completing the form including the definition of "normal" attendance.)

A	B	C	D	E	F	G*	H
School Name	School Code	"Normal" Attendance (October/May)	Dates Used for Determining "Normal" Attendance	Date of Emergency	Actual Attendance	Qualifier: 90% or Less (F/C)	Net Increase of Apportionment Days (C-F)
			-				
			-				
			-				
			-				
			-				
			-				
			-				
			-				
			-				
			-				
Total:							

PART III: MATERIAL DECREASE CALCULATION FOR CONTINUATION HIGH SCHOOLS (Provide the attendance in hours. Use the supplemental Excel file at <https://www.cde.ca.gov/fq/aa/pa/j13a.asp> if more than 5 lines are needed for this request. Refer to the instructions for information on completing the form including the definition of "normal" attendance.)

A	B	C	D	E	F	G*	H
School Name	School Code	"Normal" Attendance Hours	Date Used for Determining "Normal" Attendance	Date of Emergency	Actual Attendance Hours	Qualifier: 90% or Less (F/C)	Net Increase of Hours (C-F)
Total:							

*Qualifier should be 90% or less except when the governor declares a state of emergency or in the case of a Necessary Small School (NSS) site.

SECTION D: LOST OR DESTROYED ATTENDANCE RECORDS

☐ Not Applicable (Proceed to Section E)

PART I: PERIOD OF REQUEST The entire period covered by the lost or destroyed records commences with _____ up to and including _____.

PART II: CIRCUMSTANCES (Describe below circumstances and extent of records lost or destroyed.)

PART III: PROPOSAL (Describe below the proposal to reconstruct attendance records or estimate attendance in the absence of records.)

SECTION E: AFFIDAVIT

PART I: AFFIDAVIT OF SCHOOL DISTRICT, COUNTY OFFICE OF EDUCATION, OR CHARTER SCHOOL GOVERNING BOARD MEMBERS – All applicable sections below must be completed to process this J-13A request.

We, members constituting a majority of the governing board of _____, hereby swear (or affirm) that the foregoing statements are true and are based on official records.

Board Members Names

Board Members Signatures

_____	_____
_____	_____
_____	_____
_____	_____
_____	_____
_____	_____
_____	_____
_____	_____
_____	_____

At least a majority of the members of the governing board shall execute this affidavit.

Subscribed and sworn (or affirmed) before me, this _____ day of _____, _____.

Witness: _____ Title: _____ of _____ County, California
(Name) (Signature)

PART II: APPROVAL BY SUPERINTENDENT OF CHARTER SCHOOL AUTHORIZER (Only applicable to charter school requests)

Superintendent (or designee): _____ Authorizing LEA Name: _____
(Name) (Signature)

PART III: AFFIDAVIT OF COUNTY SUPERINTENDENT OF SCHOOLS

The information and statements contained in the foregoing request are true and correct to the best of my knowledge and belief.

County Superintendent of Schools (or designee): _____
(Name) (Signature)

Subscribed and sworn (or affirmed) before me, this _____ day of _____, _____.

Witness: _____ Title: _____ of _____ County, California
(Name) (Signature)

COE contact/individual responsible for completing this section:

Name: _____ Title: _____ Phone: _____ E-mail: _____

Description of power outage at Davis Senior High School, Sunday, April 7, 2019

At 1:20 PM on Sunday, the power at Davis High School went down. DJUSD maintenance staff were on-site within 30 minutes and confirmed with PG&E that the power issue was limited to DHS. An electrical contractor was called and they determined the outage would take weeks to repair. The point of failure was a piece of equipment called a "bus duct". The bus duct connects the PG&E transformer to the main switchgear. Bus ducts are only used in very high amperage systems like at DHS and there are no other bus ducts at other DJUSD sites.

DHS Temporary Power Issue
April 2019

#1. Bus Duct Point of Failure



#2. Bus Duct Assembly



#3. PG&E Crew Providing Safe Off to Transformer



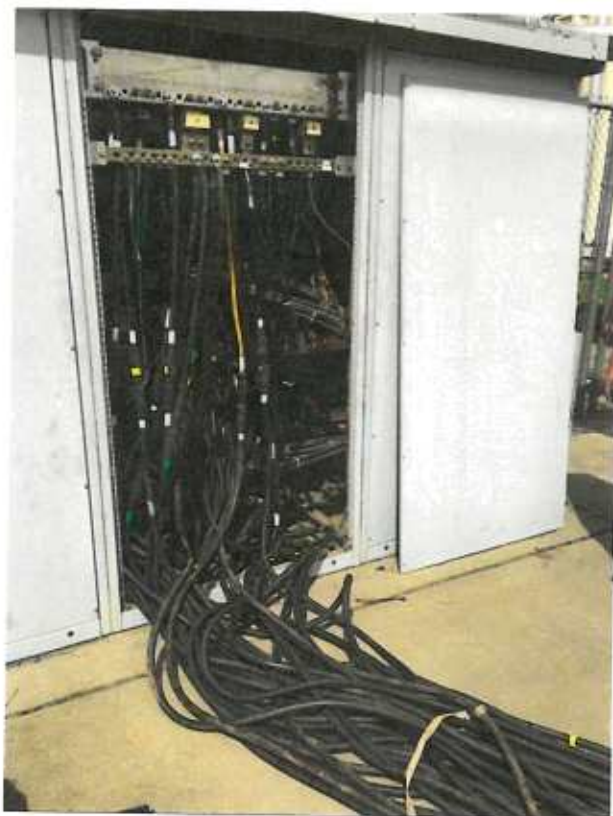
#4. Two Megawatt Generator Arriving On-site



#5. Start of Generator Cabling



#6. Cabling Connection to Main Switchgear



#7. City of Davis Fire Marshall Inspection of Generator



#8. Generator Fueling



DJUSD,

The power outage that occurred at Davis High School on 4/7 was due to failure of the bus duct that provides power from the transformer to the switch gear. A power generator was the only immediate solution to safely restore power in a timely manner.

The bus duct that feed the switch gear will need to be replaced or repaired before we can safely provide power again. Once these repairs are made by Davis high school we will restore power within 24 hours.



**Pacific Gas and
Electric Company.**

Jim Deptuch

Electric Distribution Supervisor

Woodland, Mobile (408)482-1946

J5d5@pge.com

Cheryl Ozga

From: John Bowes
Sent: Monday, April 08, 2019 6:40 AM
Subject: Closure of Davis High School Due to Power Outage on Monday, April 8, 2019

Good Morning DJUSD Employees:

Due to a failure of key power infrastructure, Davis Senior High School will be closed on Monday, April 8, 2019. All other DJUSD schools and offices are open and operating on a regular schedule.

We do not expect a substantive update about the duration of this outage at Davis Senior High School until midday. The phone system is down at the campus; please email DSHS staff directly or call the District office at 530-757-5300 if you need to make contact. As additional information is available, we will be contacting parents and staff via email/phone and posting updates to the [District's Facebook page](#).

Please watch for another update later in the day. Best -

John A. Bowes, Ed.D. | Superintendent

Davis Joint Unified School District
526 B Street | Davis, CA 95616
jbowes@djUSD.net | djUSD.net
530-757-5300 x 142

*I note the obvious differences
between each sort and type,
but we are more alike, my friends,
than we are unlike.*

*We are more alike, my friends,
than we are unlike.*

From "Human Family" by Maya Angelou



This email message is for the sole use of the intended recipient(s) and may contain privileged and confidential information. Any unauthorized review, use, disclosure or distribution is prohibited. If you are not the intended recipient, please contact the sender by reply email and destroy all copies of the original message. The unauthorized access, use, disclosure, or distribution of this email may constitute a violation of federal and/or state laws.

Alerts

★ New 4/8/19 - 2:40 P.M.: DSHS POWER OUTAGE UPDATE

DAVIS SENIOR HIGH TO TEST GENERATORS Davis Senior High is closed today because our school is experiencing a total power failure due to an outage in our power infrastructure. Classes and on-campus events are canceled. However, any athletic games and practices that were scheduled at off site locations will continue as planned. DJUSD has been working with PG&E since late Sunday evening to find a resolution to this power outage. As the regular power infrastructure cannot be repaired today, the school has brought in generators to power lighting, phones, fire alarms, safety systems and other necessary systems to enable us to open campus. Testing of this auxiliary power shall occur later this evening. Look for further updates from me before 8:00 p.m. with more information. Updates are available on the Davis Senior High website, the DJUSD website, District's Facebook and other social media.

★ New DAVIS SENIOR HIGH CLOSED ON MON. APRIL 8

Due to a failure of key power infrastructure, Davis Senior High School will be closed on Monday, April 8, 2019. We do not expect a substantive update about the duration of this outage until midday Monday. The phone system is down at the campus; if you need assistance please email DSHS staff directly or contact the District office at 530-757-5300. Additional information will be posted to the District's website and Facebook page as it is available.

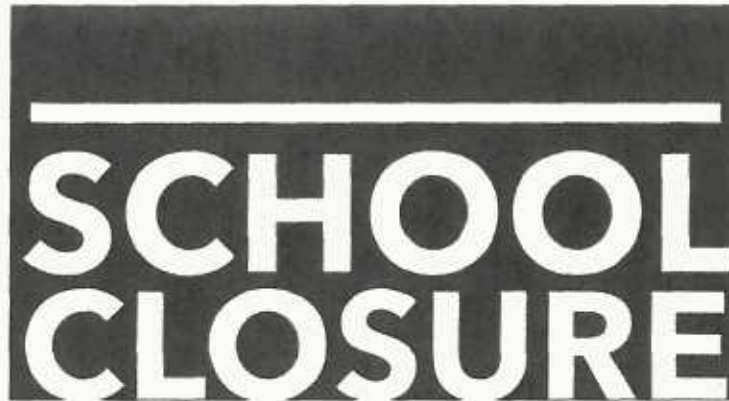


Davis Joint Unified School District

April 7 at 11:29 PM ·

IMPORTANT:

Due to a failure of key power infrastructure, Davis Senior High School will be closed on Monday, April 8, 2019. We do not expect a substantive update about the duration of this outage until midday Monday. The phone system is down at the campus; if you need assistance please email DSHS staff directly or contact the District office at 530-757-5300. Additional information will be posted to the District's website and Facebook page as it is available.



DHS Madrigal Choir



Davis Media Access

See More

Places Davis, California Public School Davis Joint Unified School District

English (US) · Español · Português (Brasil) · Français (France) · Deutsch

Privacy · Terms · Advertising · Ad Choices · Cookies · More
Facebook © 2019

See more of Davis Joint Unified School District on Facebook

Log In

or

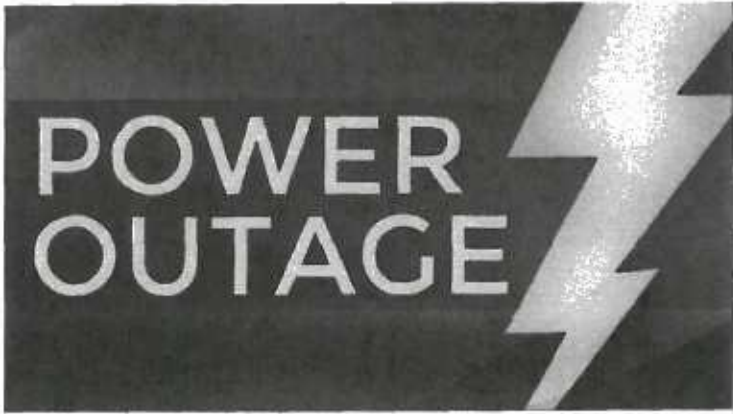
Create New Account

<https://www.facebook.com/DavisJointUnifiedSchoolDistrict/>

2/5

- Photos
- Videos
- Posts
- Community
- Events
- Info and Ads

Create a Page



Davis Joint Unified School District

April 8 at 6:20 AM ·

In case you missed it - IMPORTANT:

Due to a failure of key power infrastructure, Davis Senior High School will be closed on Monday, April 8, 2019. We do not expect a substantive update about the duration of this outage until midday Monday. The phone system is down at the campus; if you need assistance please email DSHS staff directly or contact the District office at 530-757-5300. Additional information will be posted to the District's website and Facebook page as it is available.

See more of Davis Joint Unified School District on Facebook

Log In

or

Create New Account

<https://www.facebook.com/DavisJointUnifiedSchoolDistrict/>

3/5

Email or Phone

Password

Log In

Forgot account?



Davis Joint Unified
School District
@DavisJointUnifiedSchool
District

Home

About

Photos

Videos

Posts

Community

Events

Info and Ads

Create a Page



Like

Share

Send Message



Davis Joint Unified School District

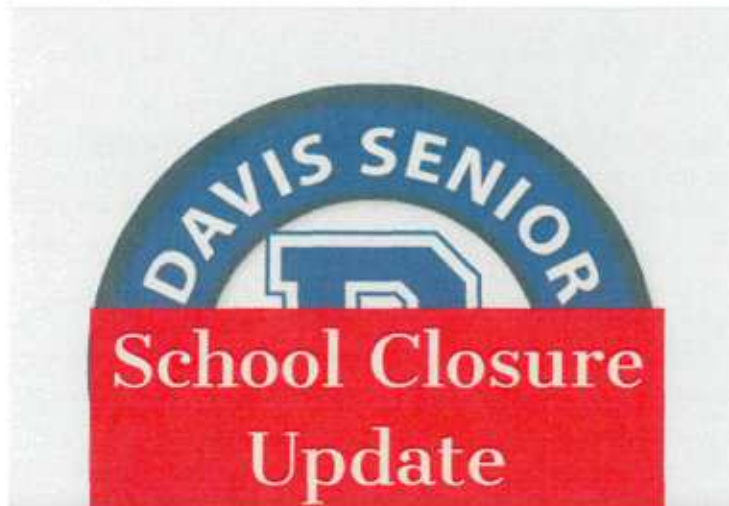
April 8 at 2:20 PM ·

DAVIS SENIOR HIGH TO TEST GENERATORS

Davis Senior High is closed today because our school is experiencing a total power failure due to an outage in our power infrastructure. Classes and on-campus events are canceled. However, any athletic games and practices that were scheduled at off site locations will continue as planned.

DJUSD has been working with PG&E since late Sunday evening to find a resolution to this power outage. As the regular power infrastructure cannot be repaired today, the school has brought in generators to power lighting, phones, fire alarms, safety systems and other necessary systems to enable us to open campus. Testing of this auxiliary power shall occur later this evening.

Look for further updates from me before 8:00 p.m. with more information. Updates are available on the Davis Senior High website, the DJUSD website, District's Facebook and other social media.



power outage

Davis Joint Unified School District
Public School in Davis, California

Closed Now

Community

See All

2,789 people like this

3,011 people follow this

About

See All



526 B St (0.04 mi)
Davis, California 95616

Get Directions

(530) 757-5300

www.djUSD.net

Public School

Opens tomorrow
Closed Now

Page Transparency

See More

Facebook is showing information to help you better understand the purpose of a Page. See actions taken by the people who manage and post content.

Page created - August 14, 2014

See more of Davis Joint Unified School District on Facebook

Log In

or

Create New Account

Email or Phone

Password

Log In

Forgot account?



Davis Joint Unified
School District

@DavisJointUnifiedSchool
District

Home

About

Photos

Videos

Posts

Community

Events

Info and Ads

Create a Page



Like

Share

Send Message



Davis Joint Unified School District shared a post.

April 8 at 7:56 AM ·



DSIS

April 8 at 7:51 AM ·

DSIS is open today. Split-site at Davis Senior High will not happen today due to the closure of DSHS.

Like

Comment

Share



Davis Joint Unified School District

April 8 at 7:03 PM ·

Davis Senior High School Open Tuesday

Davis Senior High will open tomorrow Tuesday, April 9 as normally scheduled. Power has been restored to campus through auxiliary systems. All classes, events, athletics and all activities will occur as normally scheduled.

Davis High Open

Davis Joint Unified School District
Public School in Davis, California

Closed Now

Community

See All

2,789 people like this.

3,011 people follow this

About

See All



526 B St (0.04 mi)
Davis, California 95616

Get Directions

(530) 757-5300

www.djUSD.net

Public School

Opens tomorrow

Closed Now

Page Transparency

See More

Facebook is showing information to help you better understand the purpose of a Page. See actions taken by the people who manage and post content.

Page created - August 14, 2014

See more of Davis Joint Unified School District on Facebook

Log In

or

Create New Account

enterprise

YOLO COUNTY NEWS

Power outage closes Davis High School on Monday

By Enterprise staff

Davis High School alerted parents and students Sunday evening of a power outage on campus, canceling classes on Monday.

"Due to a failure of key power infrastructure, Davis Senior High School will be closed on Monday, April 8," said a statement from DHS principal Tom McHale posted through various communication outlets. "We do not expect a substantive update about the duration of this outage until midday Monday."

The phone system is also down at the school. For information, contact the Davis Joint Unified School District at 530-757-5300. McHale said additional information would be posted to the District's Facebook page, <https://www.facebook.com/DavisJointUnifiedSchoolDistrict/> as it becomes available.

DHS athletic director Jeff Lorensen instructed coaches to cancel any practices and home games. Away games will continue as scheduled.

This DHS campus closure marks the second time students will miss regularly scheduled class time this school year. DJUSD, along with all other school districts in Yolo County, closed schools and offices this past November in the wake of poor air quality resulting from the devastating Camp Fire.



50%



0%



0%



25%



25%

0 Comments

Sort by Oldest



Add a comment...

Facebook Comments Plugin

Published April 8, 2019 | Last Modified on April 8, 2019 at 9:54 am

Subscribe to our free Morning Edition newsletter

email address

Subscribe

enterprise

YOLYO COUNTY NEWS

Local News

Davis High emergency generator to be tested tonight

By **Jeff Hudson**

A truck-sized, high-powered generator arrived at the Davis High School campus on Monday afternoon, which will be tested this evening. If the generator is performing up to par, classes at Davis High could resume on Tuesday. The school district hopes to make an announcement before 8 p.m. Monday evening; students and staff are being asked to watch for an announcement on the Davis Joint Unified School District's Facebook page.

A major component of the electrical system at Davis High failed on Sunday, resulting in a campus-wide power outage at the campus.

Because the school's windowless bathroom facilities were pitch dark, and the school's fire alarm systems, phone system and numerous computers were inoperable without electricity, classes, along with other on-campus events, were canceled on Monday, primarily for safety reasons.

However, any athletic games and practices that were scheduled at offsite locations continued as planned. (And high-school-level programs elsewhere in the district — including King High School, Da Vinci Charter Academy, and the Davis School for Independent Study — continued as usual.)

The school district has been working with PG&E since late Sunday evening to find a resolution to the outage.

According to public information officer Maria Clayton, the component of the electrical system that failed is apparently decades old and no longer readily available — so a replacement will have to be manufactured. So the campus could be operating on generator power for more than a day or two, assuming that the generator brought in on Monday runs properly.

Clayton indicated that updates on the Davis High situation will become available on Monday evening on the Davis High website (<https://dshs.djUSD.net/>), the DJUSD website (<https://djUSD.net/>), and district's Facebook page. The Enterprise will also publish updates as they become available.

Read more:

Power outage closes Davis High School on Monday

Davis High School alerted parents and students Sunday evening of a power outage on campus, canceling classes on Monday. "Due to a failure of key power infrastructure, Davis Senior High School will be closed on Monday, April 8," said a statement from DHS principal Tom McHale posted through various communication outlets. "We do not expect ... Continue reading

X

YOU HAVE 4 FREE ARTICLES REMAINING

0

Already have an account? **Log In**
 Print subscriber? **Register Your Account**

REMIND ME LATER

SUBSCRIBE NOW

enterprise

YOLO COUNTY NEWS

Local News

With newly installed generator providing electricity, classes to resume at Davis High on Tuesday

By Jeff Hudson

Classes will resume on Tuesday, April 9, at Davis High School, with a diesel-powered generator (installed on Monday afternoon) providing the electricity, the Davis school district announced at around 7 p.m. on Monday. All Tuesday classes, events, athletics and other activities at Davis High will occur as regularly scheduled.

The Davis High campus has been without electricity since Sunday evening, when a key component of the electrical system at the campus failed. With no electricity to support fire-alarm systems, phone systems, computer systems and other everyday functions, classes at Davis High were cancelled on Monday.

The electrical component that failed was located between Davis High's P Wing and S Wing, in an electrical equipment enclosure.

The component that failed connected the transformer to the electrical distribution switchgear. The component's failure eliminated the ability to provide power to the switchgear, and therefore to the entire Davis High campus.

A replacement for the failed electrical component will need to be custom manufactured, so the district hastily installed the diesel-powered generator on Monday afternoon, in order to get the campus operational again. (The diesel generator was brought in on an interim basis by the school district, and not provided by PG&E, as was previously reported.) It is not clear at the present time how long the Davis High campus will need to operate on generator power.

Public information officer Maria Clayton indicated that Davis High "may need to make up the missed day (due to the power outage) prior to the end of the school year unless a waiver can be obtained from the State of California. We will update the Davis High community as we learn more about that possible schedule change."

Read more:

Davis High emergency generator to be tested tonight

A truck-sized, high-powered generator arrived at the Davis High School campus on Monday afternoon, which will be tested this evening. If the generator is performing up to par, classes at Davis High could resume on Tuesday. The school district hopes to make an announcement before 8 p.m. Monday evening; students and staff are being asked ... Continue reading



Davis Enterprise

0

X

YOU HAVE 5 FREE ARTICLES REMAINING

Already have an account? [Log In](#)
Print subscriber? [Register Your Account](#)

REMIND ME LATER

SUBSCRIBE NOW